






House and Land Package FROM \$755,000

Jennian HOMES



20 Ellmers Street, Ravenswood, Woodend, NZ | House and Land

 3	 2	 2	 2	 1
---	---	---	---	---

Modern Elegance Meets Effortless Living

Step into this thoughtfully designed 159sq/m home, where contemporary comfort blends seamlessly with style. The spacious open-plan living areas, overlooking lush greenery, offering the perfect space to relax or entertain.

Crafted for quality, this home features 3 bedrooms, 2 bathrooms, and a double car garage, all designed to maximize convenience and sophistication. Enjoy seamless indoor-outdoor flow, premium appliances, and the year-round comfort of a heat pump, ensuring an inviting atmosphere in every season.

Includes:

- 10-Year Master Build Guarantee
- Jennian Homes 36 Month Defects Warranty
- Jennian Home Completion Promise

Canterbury

212 Main South Road, Sockburn, Christchurch

P 03 741 1436

E canterbury@jennian.co.nz

jennian.co.nz

Darren Kim

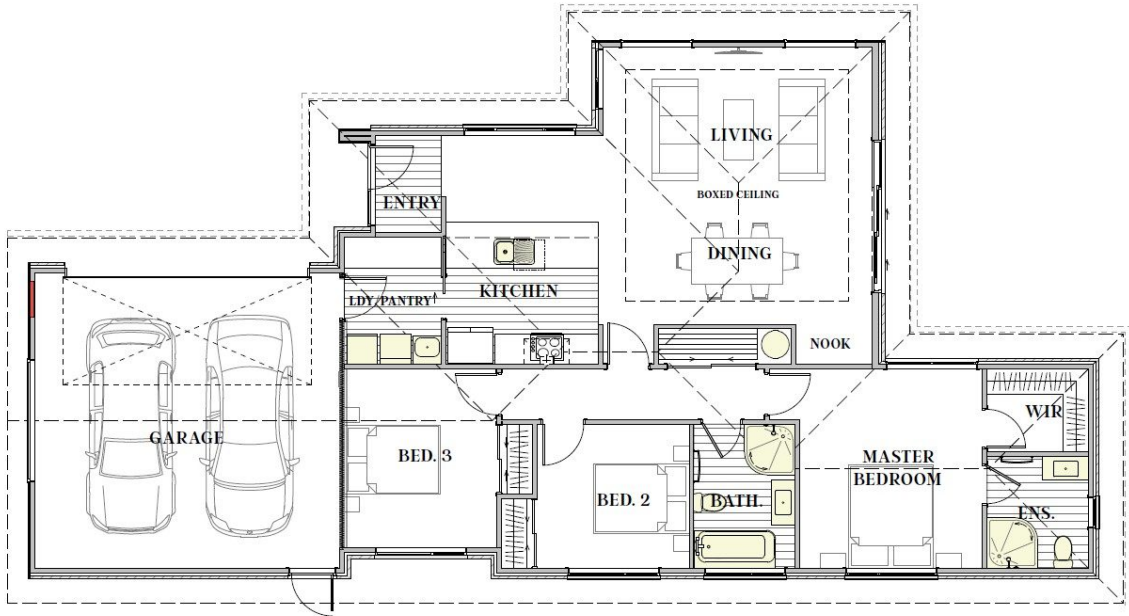
P 027 899 7000

E Darren.Kim@jennian.co.nz

20 Ellmers Street, Ravenswood, Woodend, NZ

| House and Land

159.00m² | 3 bdrm



Living Area 159 m²

Land Area 418 m²

The images may show features which may not be included in the standard plan or price. Your local Jennian New Home Consultant will confirm standard features and discuss your ideas. All plans remain the copyright of Jennian Homes.