

# House and Land Package





## FROM \$1,400,000

**Jennian**  
HOMES



## 524 Tairua Road, Whangamatā, NZ | Design and Build | House and Land

A rare opportunity awaits to secure a 3577m<sup>2</sup> (more or less) lifestyle section next to the upper reaches of Whangamata Harbour. This flat, spacious plot, opposite the mountain bike park, is a blank canvas perfect for your dream home or retreat. Anchored by a majestic Kauri tree, the property offers natural beauty and heritage, blending rural serenity with coastal convenience just 5 minutes from Whangamata's beaches, cafes, and amenities.

 4	 2	 1	 2	 1
---	---	---	---	---

### Hauraki and Coromandel

614 Port Road, Whangamata 3620

**P** 07 865 6767

**E** [coromandel@jennian.co.nz](mailto:coromandel@jennian.co.nz)

[jennian.co.nz](https://jennian.co.nz)

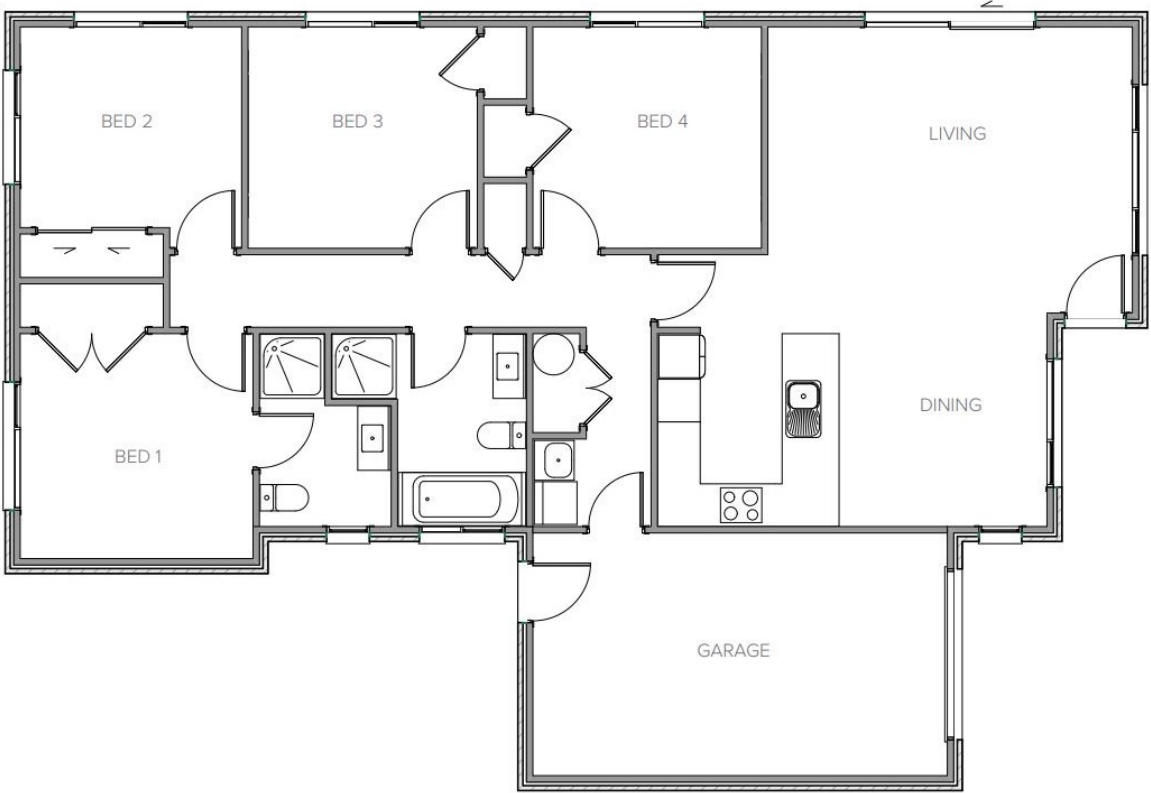
### Jaimee Price

**P** 027 788 0014

**E** [jaimee.price@jennian.co.nz](mailto:jaimee.price@jennian.co.nz)

524 Tairua Road, Whangamatā, NZ | Design and Build | House and Land

135.00m<sup>2</sup> | 4 bdrm



Living Area	135 m <sup>2</sup>
Home Width	10.7 m
Home Length	16.2 m
Land Area	3577 m <sup>2</sup>

The images may show features which may not be included in the standard plan or price. Your local Jennian New Home Consultant will confirm standard features and discuss your ideas. All plans remain the copyright of Jennian Homes.