

# House and Land Package

## POA

**Jennian**  
HOMES








## 7 Karearea Drive, Coastlands, Whakatane, NZ | House And Land

If you are seeking a laid-back coastal lifestyle with a wonderful sense of community, then Coastlands is the perfect choice for you!

The William, is a well-designed four-bedroom, two-bathroom home, sits on a spacious 738m2 site, ideally positioned to provide ample natural light and warmth throughout the day.

This stunning home features:  
Master bedroom with ensuite and wardrobe  
Spacious open plan living  
Double car garage

 4	 2	 2	 2	 2
---	---	---	---	---

### Whakatane

6 Korimako Place Coastlands, Whakatāne 3120

**P** 021 024 11002

**E** whakatane@jennian.co.nz

**jennian.co.nz**

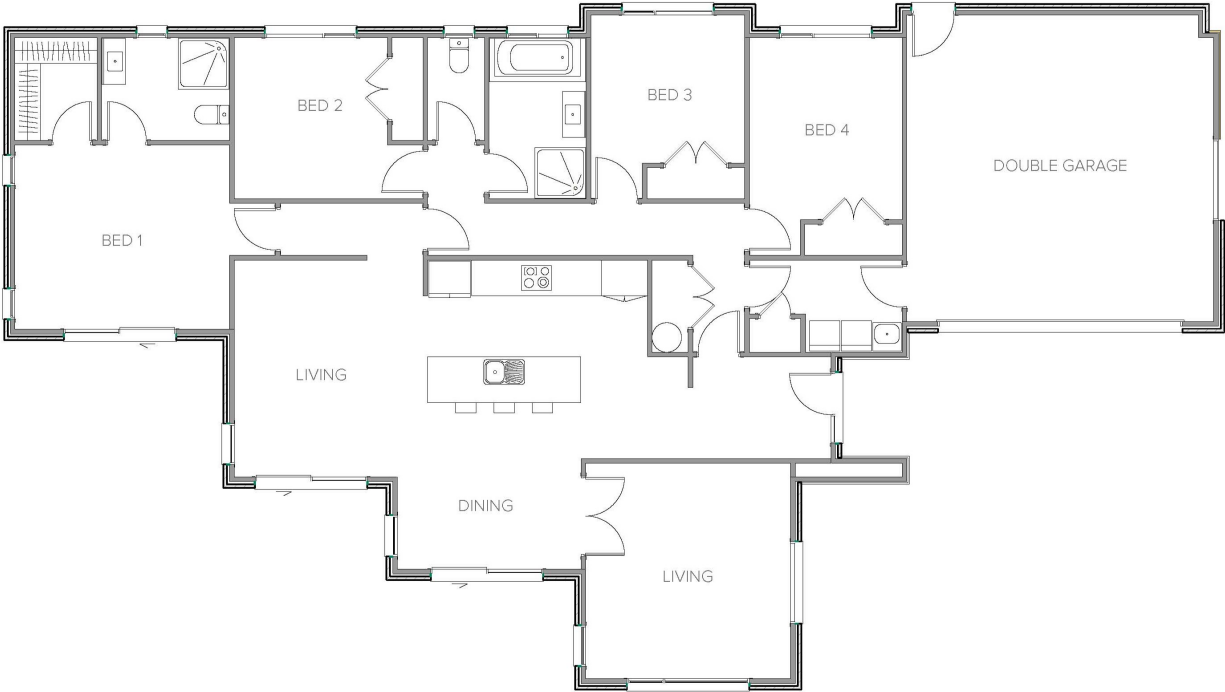
### Nic Doherty

**P** 021 024 11002

**E** nic.doherty@jennian.co.nz

7 Karearea Drive, Coastlands, Whakatane, NZ | House And Land

210.17m<sup>2</sup> | 4 bdrm



Living Area	170.66 m <sup>2</sup>
Garage Area	39.51 m <sup>2</sup>
Total Floor Area	210.17 m <sup>2</sup>
Home Width	13.2 m
Home Length	23.7 m
Land Area	738 m <sup>2</sup>

The images may show features which may not be included in the standard plan or price. Your local Jennian New Home Consultant will confirm standard features and discuss your ideas. All plans remain the copyright of Jennian Homes.