

# House and Land Package






FROM \$979,000



## Lots 1, 5-7 George Hawkins Way, Martinborough, Wairarapa, NZ | House And Land | Your Dream Home in Martinborough

Designed with your Martinborough lifestyle in mind, The Catalina offers the perfect blend of style, practicality, and comfort. A true testament to the exceptional craftsmanship and ingenuity that Jennian Homes is known for.

Nestled in one of Martinborough's most peaceful and sought-after areas, the George Hawkins Way sections provide an idyllic setting to create the home you've always dreamed of. Enjoy the luxury of a brand-new home while exploring local vineyards, cafes, and restaurants—everything you need right at your doorstep. Make the Catalina your new home. Live in luxury, live in Martinborough.

 3	 2	 2	 2	 2
---	---	---	---	---

### Wairarapa

200 Chapel Street, Masterton 5810

P 06 370 0777

E [wairarapa@jennian.co.nz](mailto:wairarapa@jennian.co.nz)

[jennian.co.nz](http://jennian.co.nz)

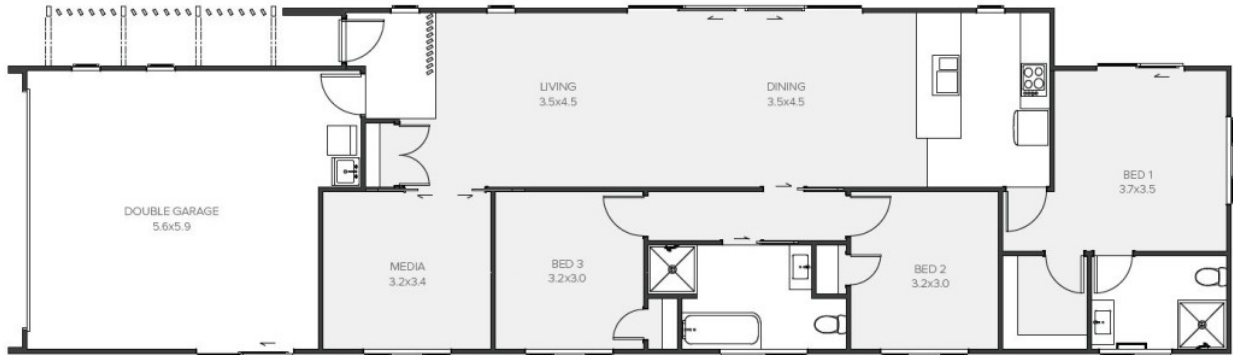
### Abby Schaefer

P 021 242 8802

E [abby.schaefer@jennian.co.nz](mailto:abby.schaefer@jennian.co.nz)

# Lots 1, 5-7 George Hawkins Way, Martinborough, Wairarapa, NZ House And Land | Your Dream Home in Martinborough

160.14m<sup>2</sup> | 3 bdrn



Living Area	160.14 m <sup>2</sup>
Home Width	7 m
Home Length	24.8 m
Land Area	449 m <sup>2</sup>

The images may show features which may not be included in the standard plan or price. Your local Jennian New Home Consultant will confirm standard features and discuss your ideas. All plans remain the copyright of Jennian Homes.