








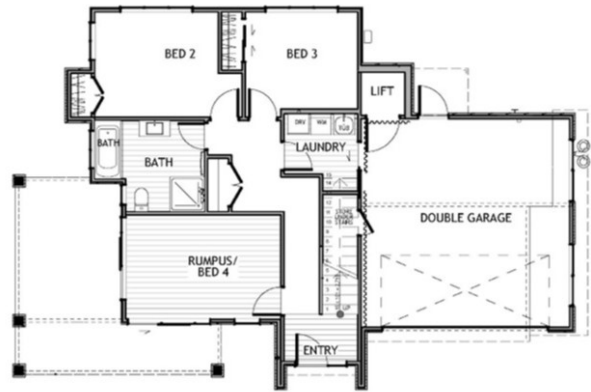
2017 Jennian Homes Coromandel - Regional Silver House of the Year

 3	 2	 2	 3	 2
---	---	---	---	---

A simple yet smart layout suits the owner's lifestyle perfectly allowing her to enjoy everyday peace and quiet and also accommodate guests. A spacious open-plan living domain is at the heart of this inviting home. Large areas of glazing frame views of the harbour. Corner stackers part in the dining area to create an indoor-outdoor experience. Enjoy the ocean air from inside or serve the meal alfresco on the ample deck. Downstairs, a second living space flows to a covered patio.

2017 Jennian Homes Coromandel - Regional Silver House of the

219.53m² | 3 bdrm



Living Area	219.53 m ²
Home Width	10.93 m
Home Length	14.58 m

The images may show features which may not be included in the standard plan or price. Your local Jennian New Home Consultant will confirm standard features and discuss your ideas. All plans remain the copyright of Jennian Homes.