








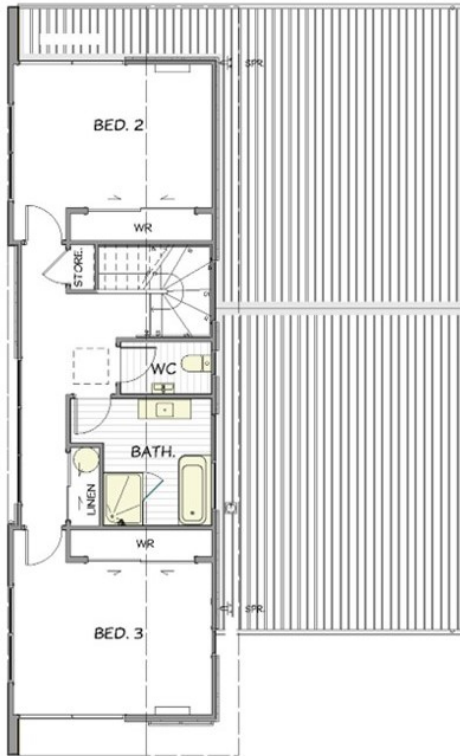
2023 Jennian Homes Nelson / Marlborough / West Coast - Regional Silver

 3	 2	 2	 3	 1
---	---	---	---	---

Compact yet stylish, this Jennian townhouse features cedar and plaster cladding, an asymmetric roofline, and floor-to-ceiling windows. The three-bedroom, two-bathroom home is near shops, cafes, and parks, with views of the Richmond Range. The spacious kitchen contrasts dark and pale materials, with a large island and walk-in pantry. The living area and main bedroom open to a covered patio and grassed area. Downstairs includes an ensuite, separate toilet, and laundry in the double garage. Cedar screens provide privacy, while upstairs, floor-to-ceiling windows illuminate the bedrooms and hallway. At 211sqm, it's spacious yet cozy.

2023 Jennian Homes Nelson / Marlborough / West Coast - Region Silver

211.70m² | 3 bdr



Living Area	211.7 m ²
Home Width	10.35 m
Home Length	16.9 m

The images may show features which may not be included in the standard plan or price. Your local Jennian New Home Consultant will confirm standard features and discuss your ideas. All plans remain the copyright of Jennian Homes.