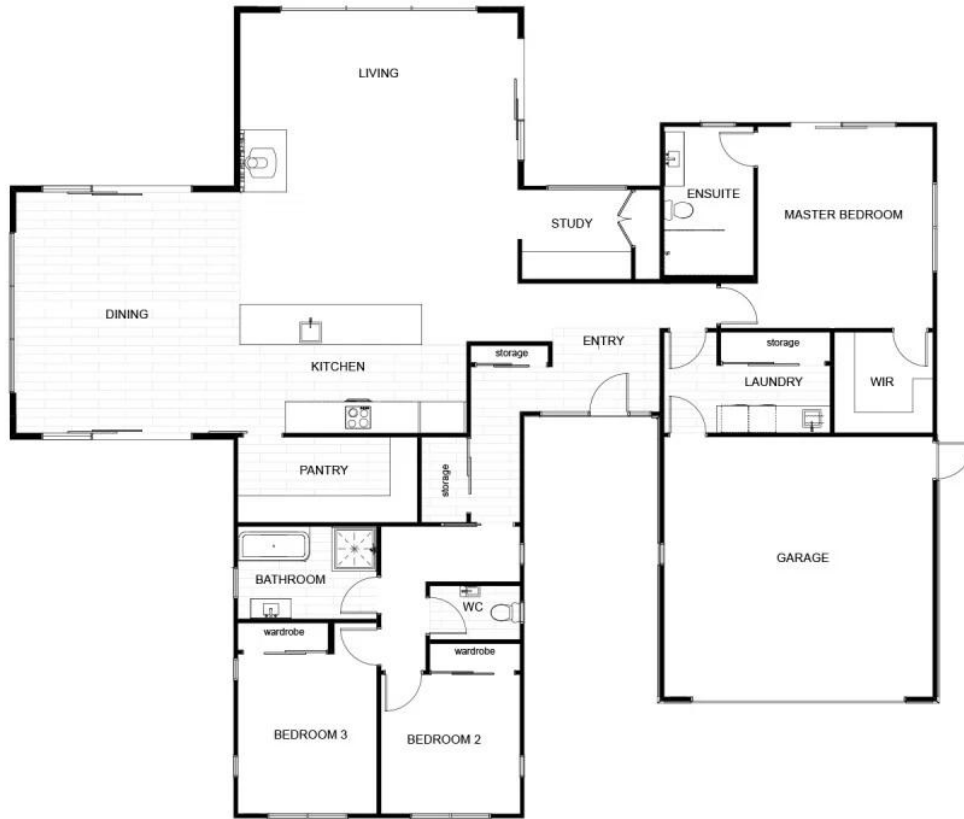




2023 Jennian Homes Canterbury - Top 100

 3	 2	 2	 2	 2
---	---	---	---	---

This Pleasant Point home features a charming mix of schist and colored steel cladding, complemented by charcoal steel roofing. Enjoy 360-degree views of mountains and farmland, with Timaru nearby. The 248sqm home offers three bedrooms, two bathrooms, a cozy living room, and a separate study. The spacious kitchen includes a large walk-in pantry, and the living area boasts a brick fireplace. The main bedroom has a walk-in wardrobe and ensuite. Designed for comfort and stunning views, this home brings the outdoors in.



The images may show features which may not be included in the standard plan or price. Your local Jennian New Home Consultant will confirm standard features and discuss your ideas. All plans remain the copyright of Jennian Homes.