








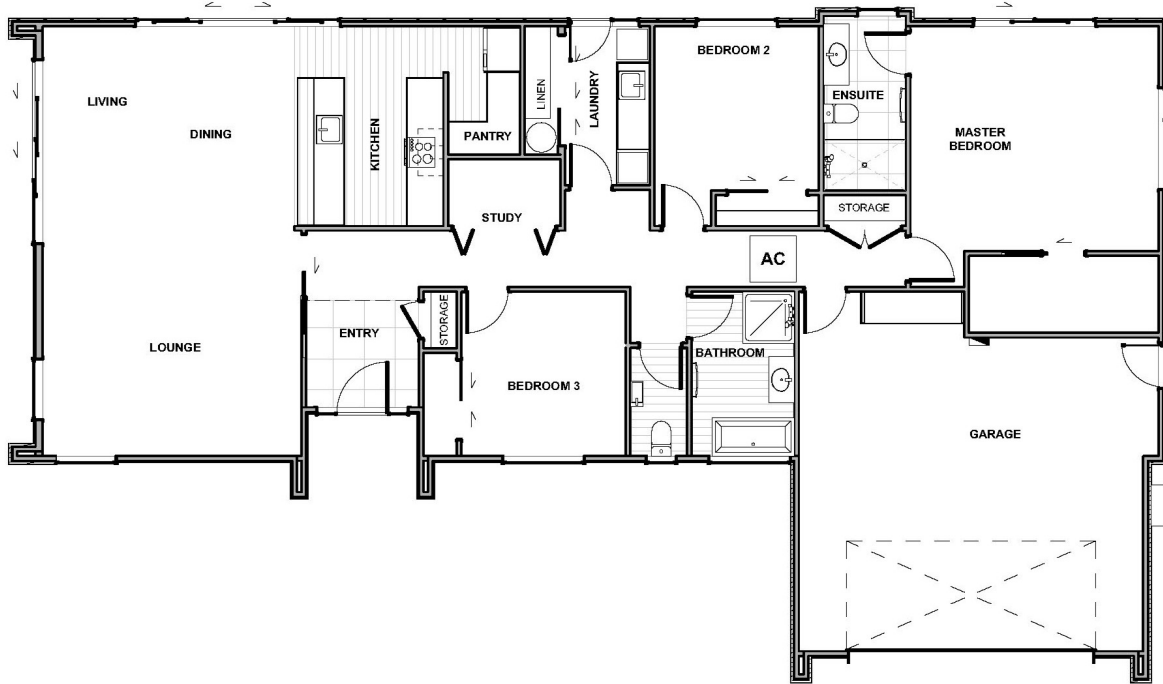
2023 Jennian Homes Mid & South Canterbury - National Top 100 and Regional Gold House of the Year

 3	 2	 2	 2	 1
---	---	---	---	---

Starting off with an eye-catching entrance in vertical cedar. It's also symbolic of the welcoming feel of the three-bedroom, two-bathroom house. Once you head up the path, past the manicured lawn and landscaping, and step through the front door, you're greeted by a light, airy tiled lobby that immediately sets the tone for the rest of the house. Turn left and you're in the open-plan part of the house with a smart, monochrome kitchen. A mosaic-tile splashback lends texture; a separate pantry provides plenty of storage. Off a central hall are a study nook and separate laundry with its own exterior door. Veer right, and you'll come across the good-sized bedrooms and a family bathroom with a bath.

2023 Jennian Homes Mid & South Canterbury - National Top 100 Regional Gold House of the Year

308.00m² | 3 bdr



Living Area	308 m ²
Home Width	13 m
Home Length	22.4 m

The images may show features which may not be included in the standard plan or price. Your local Jennian New Home Consultant will confirm standard features and discuss your ideas. All plans remain the copyright of Jennian Homes.