








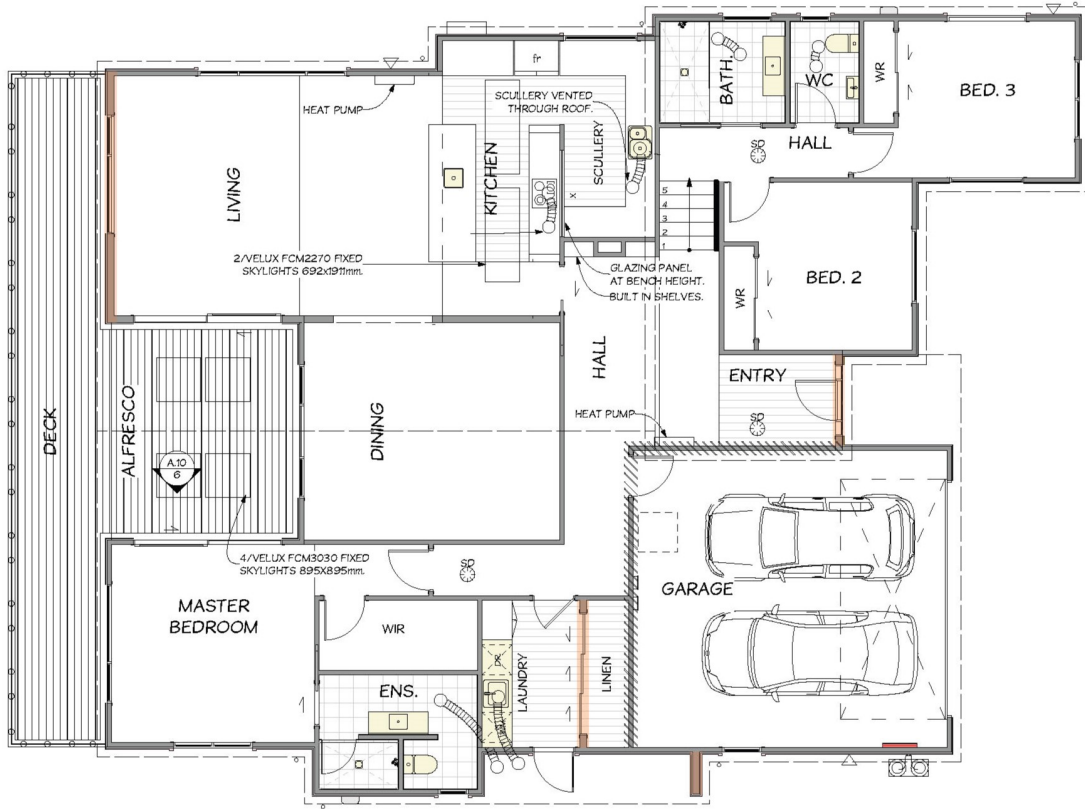
2024 Jennian Homes Nelson Bays - National Top 100 and Regional Supreme House of the Year

 3	 2	 2	 2	 2
---	---	---	---	---

Against walls of dark cladding, green planting in raised gardens pops with colour and leads visitors to the cedar front door of this Nelson home which, once opened, still doesn't quite disclose the jewels held within. To view the treasure, hang a right and dogleg past a small set of stairs and ta da... panoramic views over Nelson and Tasman Bay spread out before you through vast windows in the open-plan living area. But let's turn back to the kitchen because although it's not screaming for attention (unlike those views), this sleek minimal space deserves it. Benches run around the wall into a scullery partially hidden behind the cooktop wall, with a glass splashback that is reflective kitchen side (those views again) and see-through from the scullery.

2024 Jennian Homes Nelson Bays - National Top 100 and Regional Supreme House of the Year

233.00m² | 3 bdrms



Living Area	233 m ²
Home Width	15.75 m
Home Length	19.7 m

The images may show features which may not be included in the standard plan or price. Your local Jennian New Home Consultant will confirm standard features and discuss your ideas. All plans remain the copyright of Jennian Homes.