




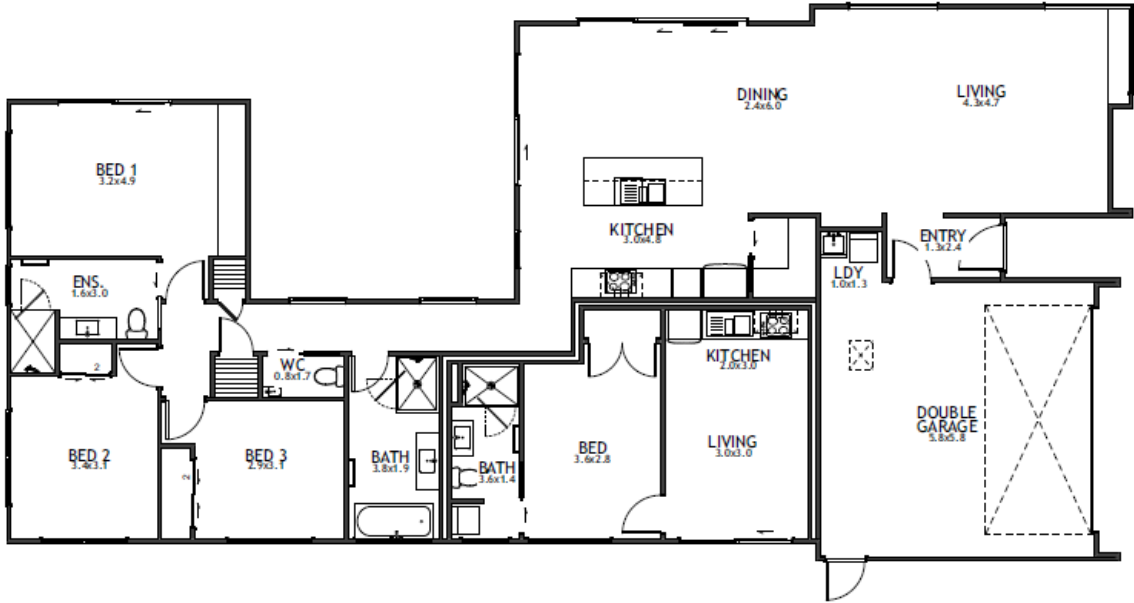




Aspen

 4	 3	 2	 3	 2
---	---	---	---	---

The Aspen is a sophisticated 4-bedroom home that blends sleek design with luxurious comfort. Featuring open-plan living spaces that seamlessly flow outdoors, this modern pavilion-style home is perfect for both stylish retreats and functional family living. With large corner windows and skylights, the spacious living area is flooded with natural light, making it ideal for entertaining and family gatherings. Explore more about this stunning home and contact our team to start your journey towards owning the Aspen.



Living Area	218 m ²
Home Width	11.78 m
Home Length	23.84 m

The images may show features which may not be included in the standard plan or price. Your local Jennian New Home Consultant will confirm standard features and discuss your ideas. All plans remain the copyright of Jennian Homes.