

House and Land Package

FROM \$992,000



Exclusive Martinborough House and Land Package | 46-48 Weld Street

 3	 2	 1	 2	 1
---	---	---	---	---

Build your dream home in exclusive Martinborough! Discover the charm of this area with this stylish house and land package. Cycle through scenic vineyards, enjoy a crisp Rosé or Pinot Noir with leisurely vineyard lunches, and immerse yourself in everything the beautiful Wairarapa has to offer. Based on our award winning Greytown Display Home, this property offers the perfect blend of elegance and relaxation. Available sites: Lots 6/7. Call Abby on 0212428802 to secure this House and Land package in Martinborough for under a million with a low deposit and no further payments until your new build is complete!

Wairarapa

200 Chapel Street, Masterton 5810

P 06 370 0777

E wairarapa@jennian.co.nz

jennian.co.nz

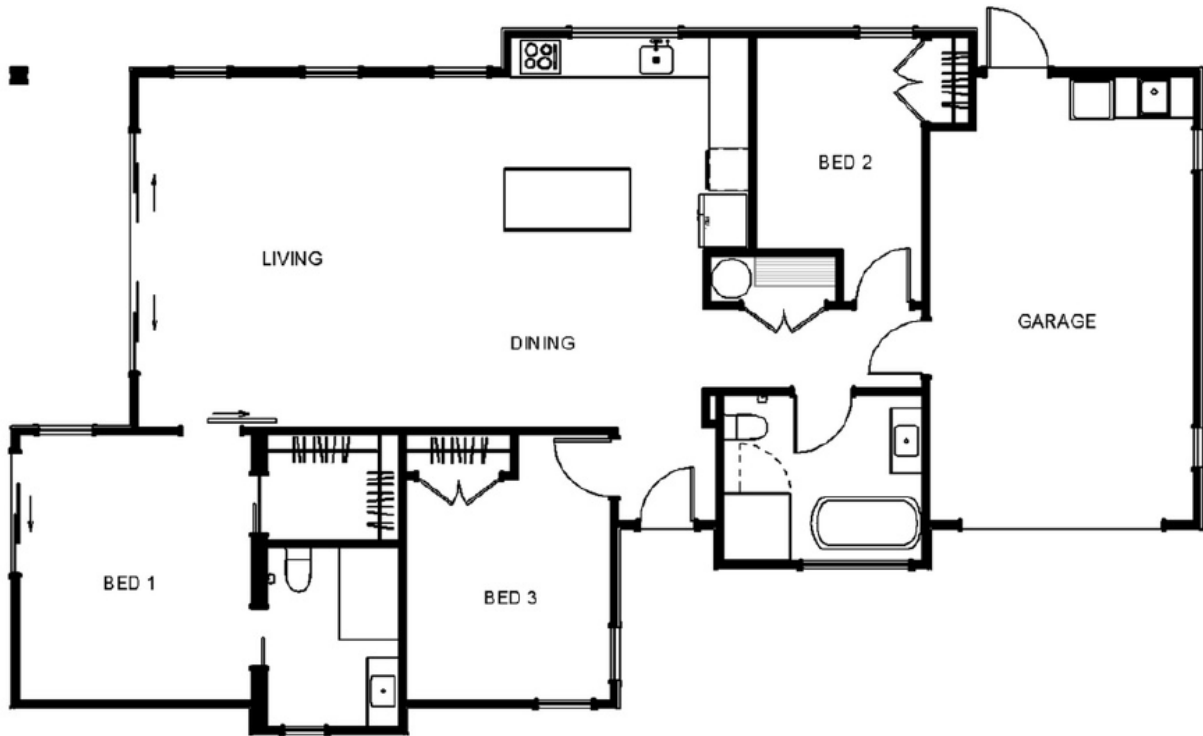
Abby Schaefer

P 021 242 8802

E abby.schaefer@jennian.co.nz

Exclusive Martinborough House and Land Package | 46-48 Weld Street

145.00m² | 3 bdrm



Living Area 145 m²

Land Area 400 m²

The images may show features which may not be included in the standard plan or price. Your local Jennian New Home Consultant will confirm standard features and discuss your ideas. All plans remain the copyright of Jennian Homes.