





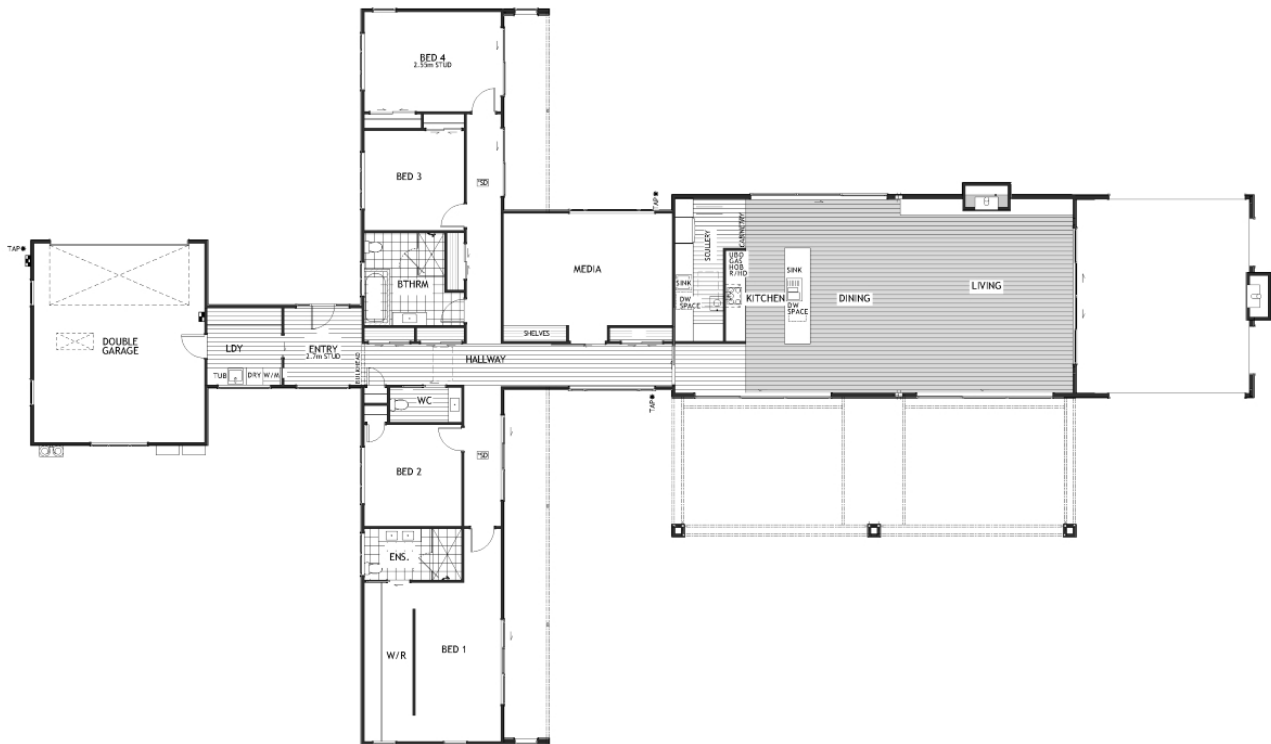
Te Mata

 4	 2	 2	 3	 2
---	---	---	---	---

The Te Mata is an architecturally designed modern masterpiece that offers space, sophisticated style, and practicality for contemporary family living. There are two generous living areas providing room for both relaxation and entertaining along with an inviting alfresco space, ideal for enjoying those long summer evenings.

The home features 4 spacious bedrooms, thoughtfully positioned to maximize indoor-outdoor flow and natural light.

The Te Mata stands out as a premium house plan, designed for those seeking expansive and contemporary family living.



Living Area 328.1 m²

Garage Area 44.37 m²

Total Floor Area 372.47 m²

Home Width 25.83 m

Home Length 43.56 m

The images may show features which may not be included in the standard plan or price. Your local Jennian New Home Consultant will confirm standard features and discuss your ideas. All plans remain the copyright of Jennian Homes.