






# House and Land Package

**FROM \$1,266,000**

**Jennian**  
HOMES



## 15 Maurice Harding Ave - Lot 50 Stage 9

 4	 2	 2	 2	 2
---	---	---	---	---

Practicality is a highlight of this home with a well considered layout. Four bedrooms, with the master located at the far end of the house, and three other bedrooms are positioned close to the family bathroom. Other features are such as direct access to the double garage, providing convenience for daily tasks and effortless unloading of groceries.

This modern, functional design ensures every family member's needs are met with style and comfort.

Price includes an impressive showcase of Already Yours Jennian Inclusions. Ask us more!

### Auckland - Franklin and South

2 Buddle Road, Paerata Rise, Pukekohe 2676

**P** 09 238 6156

**E** franklin@jennian.co.nz

**jennian.co.nz**

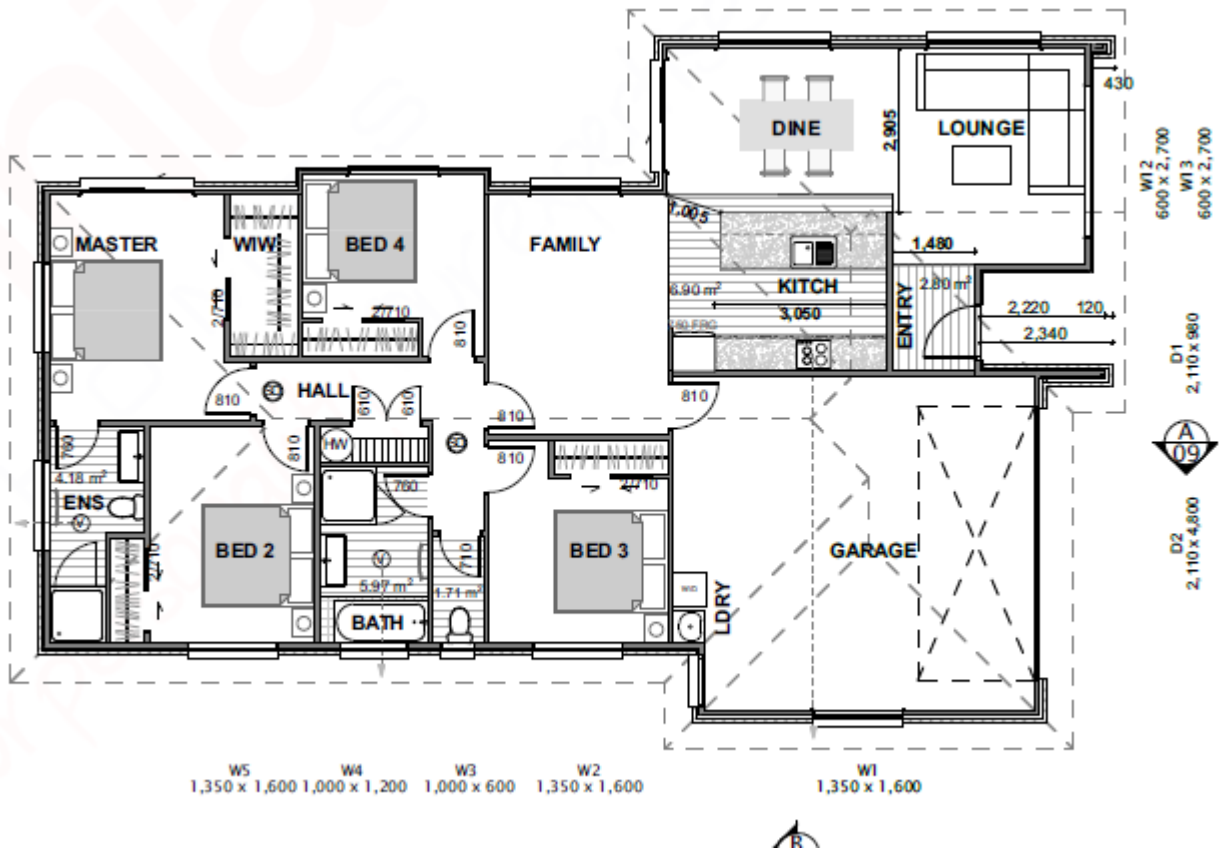
### Louise Court

**P** 021 645 748

**E** louise.court@jennian.co.nz

# 15 Maurice Harding Ave - Lot 50 Stage 9

178.00m<sup>2</sup> | 4 bdrms



Living Area	140 m <sup>2</sup>
Garage Area	38 m <sup>2</sup>
<b>Total Floor Area</b>	<b>178 m<sup>2</sup></b>
Home Width	12.15 m
Home Length	18.9 m
Land Area	500 m <sup>2</sup>

The images may show features which may not be included in the standard plan or price. Your local Jennian New Home Consultant will confirm standard features and discuss your ideas. All plans remain the copyright of Jennian Homes.