

# House and Land Package

**FROM \$875,000**

**Jennian**  
HOMES



## 5 Moehau Street, Te Puke

 3	 2	 1	 1	 1
---	---	---	---	---

Are you searching for a new home in Te Puke, close to the shops and schools?

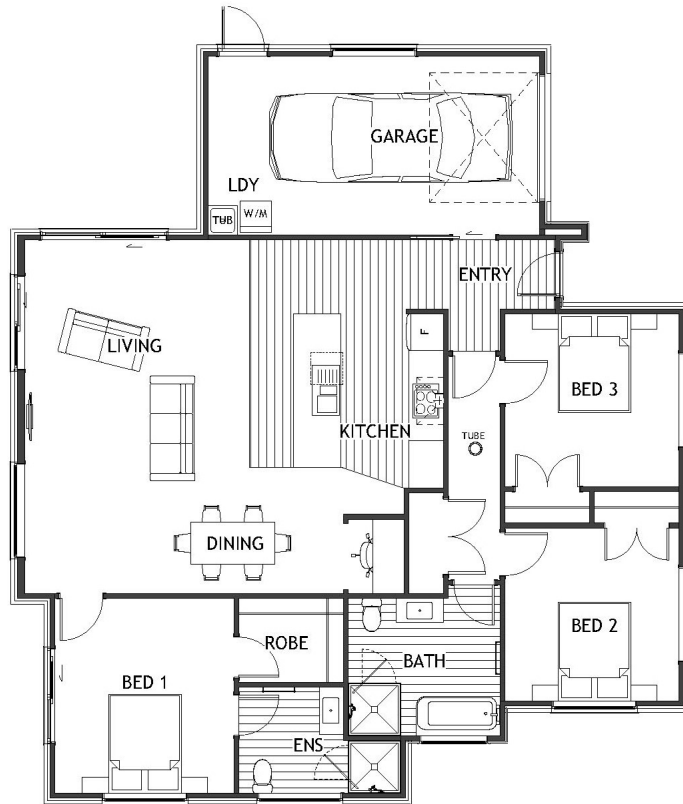
Look no further than this new three bedroom home. It has been designed with modern, low maintenance living in mind, making it a great option for first time buyers, retirees downsizing, or families looking for a modern 'lock-up and leave' home. This new home will be built to a high standard, featuring a contemporary open-plan living and dining area and quality appliances. You get to choose the elements to suit your personal tastes and style.

**Tauranga & Western BOP**  
180 Fifteenth Avenue, Tauranga  
**P** 07 925 9800  
**E** tauranga@jennian.co.nz  
[jennian.co.nz](http://jennian.co.nz)

**Steve Garvey**  
**P** 021 306 260  
**E** steve.garvey@jennian.co.nz

# 5 Moehau Street, Te Puke

150.00m<sup>2</sup> | 3 bdrm



Living Area 150 m<sup>2</sup>

Land Area 386 m<sup>2</sup>

The images may show features which may not be included in the standard plan or price. Your local Jennian New Home Consultant will confirm standard features and discuss your ideas. All plans remain the copyright of Jennian Homes.