







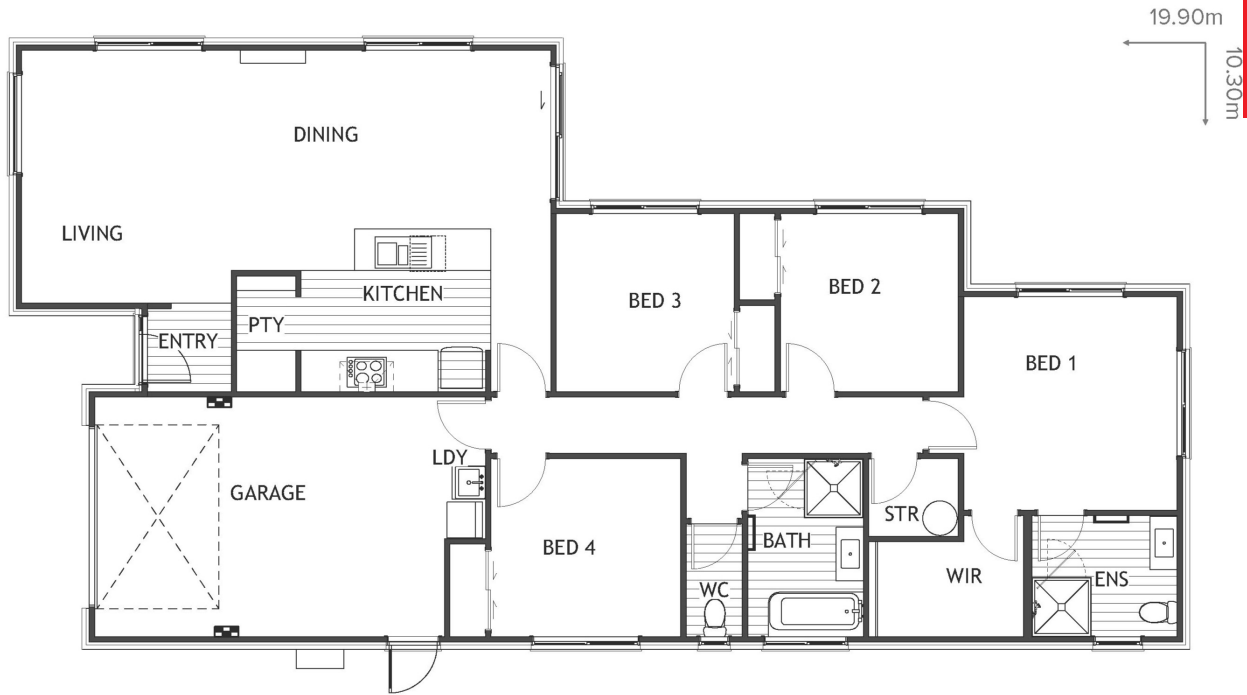
Amy

 4	 2	 1	 2	 1
---	---	---	---	---

Amy is a functional 4-bedroom, 2 bathroom house plan that has it all. Open plan living and dining, kitchen with walk in pantry, 4 Bedrooms, main bathroom with separate toilet and master bedroom with ensuite and walk in wardrobe.

Amy

155.42m² | 4 bdr



Living Area	128.94 m ²
Garage Area	26.48 m ²
Total Floor Area	155.42 m²
Home Width	10.3 m
Home Length	19.9 m

The images may show features which may not be included in the standard plan or price. Your local Jennian New Home Consultant will confirm standard features and discuss your ideas. All plans remain the copyright of Jennian Homes.