




# House and Land Package

## FROM \$739,000

**Jennian**  
HOMES



## Lot 765 Ravenswood

 3	 2	 1	 2	 1
---	---	---	---	---

The Cantab Amelia, one of our most desired house and land packages! Situated on Lot 765 Ravenswood, this deal is ideal for first home buyers and perfectly priced under the KiwiSaver cap.

Featuring three double bedrooms, open plan kitchen and living with feature separate toilet and bathroom. Situated on an easy, low-care north-facing section, this home is a great way to step on to the property ladder!

Ready to build? Let us help you find the right package for you by getting in touch today.

### Canterbury

212 Main South Road, Sockburn, Christchurch

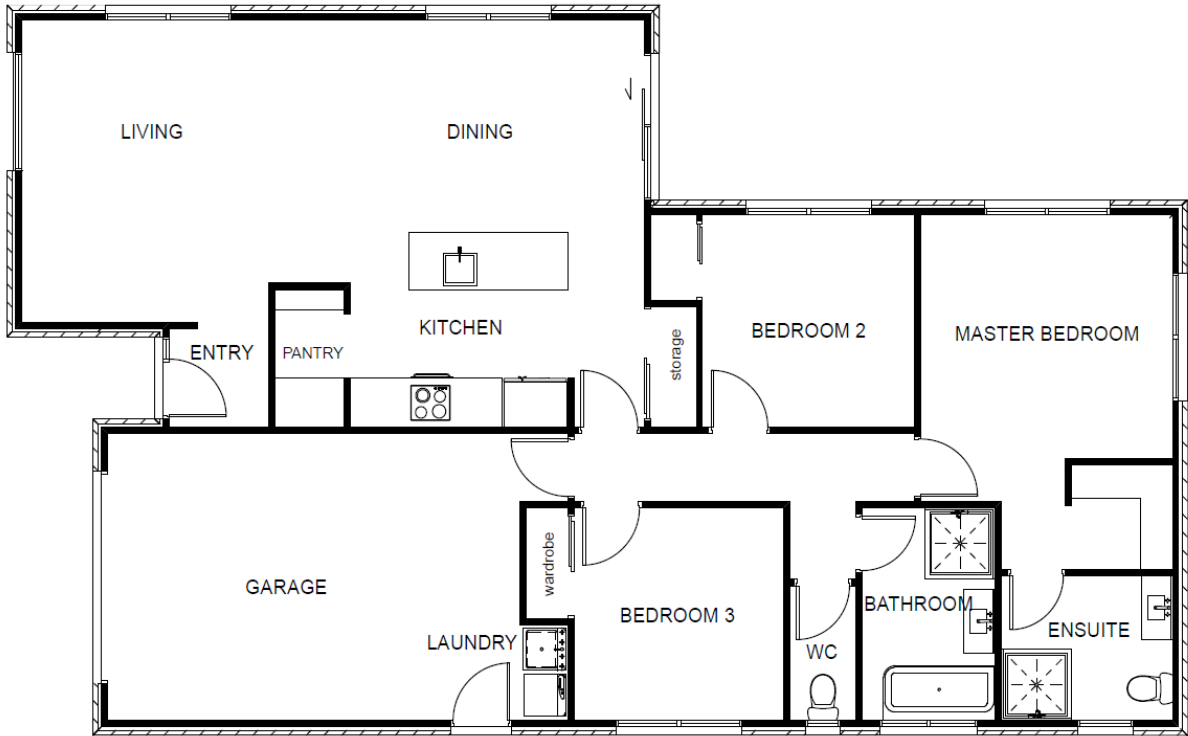
**P** 03 741 1436

**E** canterbury@jennian.co.nz

**jennian.co.nz**

# Lot 765 Ravenswood

145.10m<sup>2</sup> | 3 bdr



Living Area	121.5 m <sup>2</sup>
Garage Area	23.6 m <sup>2</sup>
<b>Total Floor Area</b>	<b>145.1 m<sup>2</sup></b>
Home Width	10.3 m
Home Length	16.9 m
Land Area	418 m <sup>2</sup>

The images may show features which may not be included in the standard plan or price. Your local Jennian New Home Consultant will confirm standard features and discuss your ideas. All plans remain the copyright of Jennian Homes.