

# House and Land Package

## FROM \$775,000

**Jennian**  
HOMES



## Lot 764 Ravenswood

A twist on our classic Amelia plan, this striking new Jennian Home is sure to impress with inviting open plan living, walk-in pantry, 4 double bedrooms and a fully insulated garage.

Interior joinery and colour consultations are included in this package, allowing you the freedom to select your own colour scheme throughout the home. The home rests nicely on a low maintenance section with plenty of space to add your own style of landscaping.

 4	 2	 1	 2	 1
---	---	---	---	---

### Canterbury

212 Main South Road, Sockburn, Christchurch

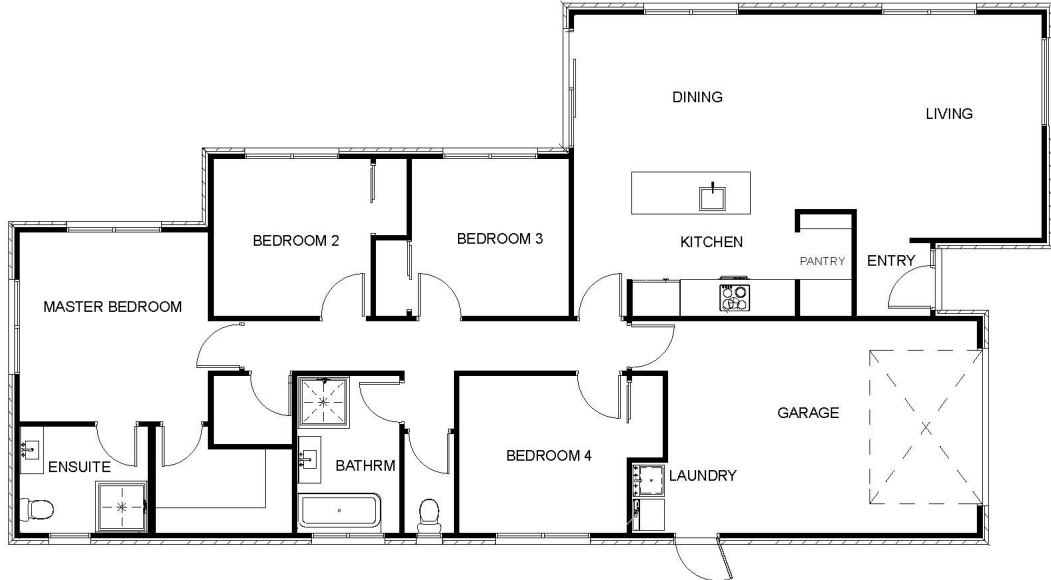
**P** 03 741 1436

**E** canterbury@jennian.co.nz

**jennian.co.nz**

# Lot 764 Ravenswood

162.80m<sup>2</sup> | 4 bdrm



Living Area	139.2 m <sup>2</sup>
Garage Area	23.6 m <sup>2</sup>
<b>Total Floor Area</b>	<b>162.8 m<sup>2</sup></b>
Home Width	10.3 m
Home Length	19.9 m
Land Area	418 m <sup>2</sup>

The images may show features which may not be included in the standard plan or price. Your local Jennian New Home Consultant will confirm standard features and discuss your ideas. All plans remain the copyright of Jennian Homes.