








Open Home - 5 Te Ara o Waihuri, Tamakuku Terrace, Palmerston North

Your Brand New Home! Available Now!

Located in Tamakuku Terrace, this completed Jennian Home boasts 3 bedrooms, 2 bathrooms, an open plan kitchen, dining, and living area, with seamless indoor-outdoor flow for entertaining.

The home's modern exterior provides a striking appeal with contrasting linea and cedar that really stands out on the street. This home is fully landscaped, fenced, and come with a double garage and off street parking. Become a part of a thriving and friendly community at Tamakuku Terrace.

 3	 2	 2	 2	 1
---	---	---	---	---

Manawatu

275 Broadway Avenue, Palmerston North 4414

P 06 355 3325

E manawatu@jennian.co.nz

jennian.co.nz

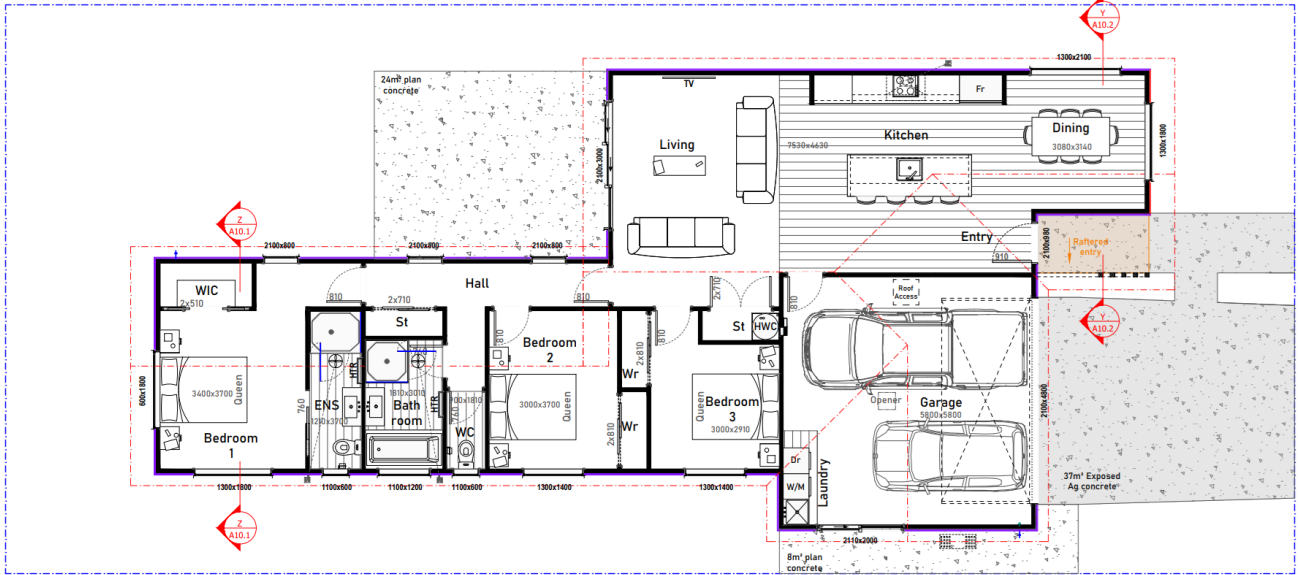
Haydon Christian

P 027 300 0390

E haydon.christian@jennian.co.nz

Open Home - 5 Te Ara o Waihuri, Tamakuku Terrace, Palmerson North

163.00m² | 3 bdrm



Living Area	129 m ²
Garage Area	34 m ²
Total Floor Area	163 m²
Home Width	10.7 m
Home Length	23.18 m

The images may show features which may not be included in the standard plan or price. Your local Jennian New Home Consultant will confirm standard features and discuss your ideas. All plans remain the copyright of Jennian Homes.