






# House and Land Package

**FROM \$1,556,000**

**Jennian**  
HOMES



## Home and Income in Paerata Rise, Lot 75, 32 Arohaina Ave, Pukekohe

 4	 3	 2	 3	 3
---	---	---	---	---

The highly sought after home and income opportunity is now available in Paerata Rise!

This home incorporates a separate unit- your ticket to having the ability to host extra family, or perhaps you'll enjoy the extra income and rent it out? The main house has three bedrooms and the unit has one bedroom, complete with bathroom and kitchen.

This home features a modern pavilion design and you'll enjoy customising the interior decor and colours guided by our expert colour advisors at Yellow Fox. This home boasts an enviable and private barbecue alfresco area, perhaps you would like to add a louvre canopy to make the most of the outdoor living?

This home boasts an impressive list of **ALREADY YOURS JENNIAN INCLUSIONS-** Please ask us!!

### Auckland - Franklin and South

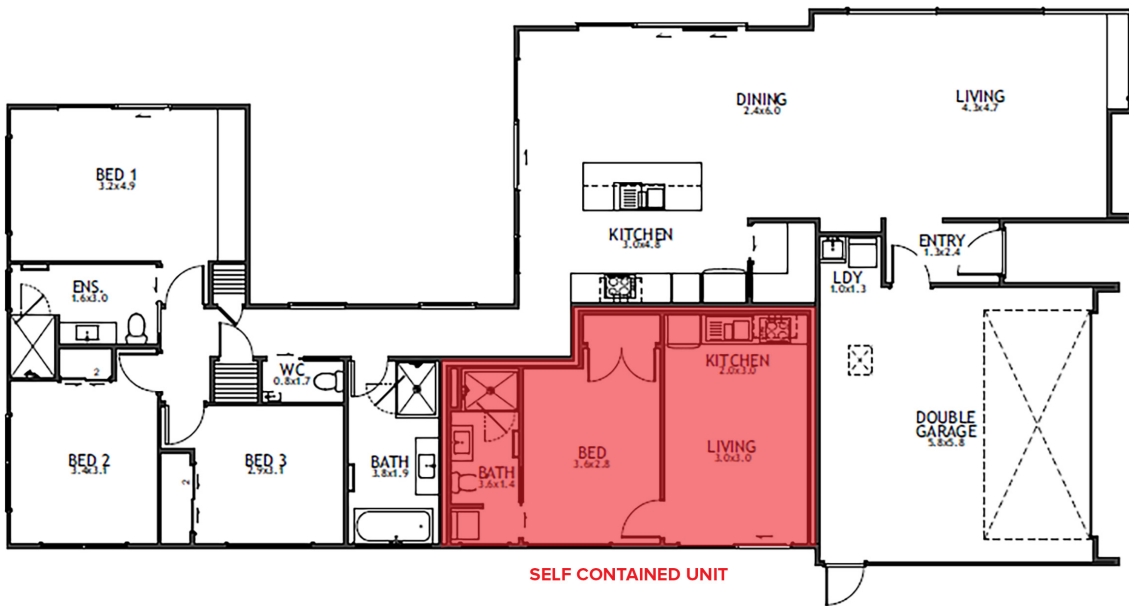
40 Te Rata Boulevard, Paerata Rise, Pukekohe 2676  
P 09 238 6156  
E [franklin@jennian.co.nz](mailto:franklin@jennian.co.nz)  
[jennian.co.nz](http://jennian.co.nz)

### Louise Court

P 021 645 748  
E [louise.court@jennian.co.nz](mailto:louise.court@jennian.co.nz)

# Home and Income in Paerata Rise, Lot 75, 32 Arohaina Ave, Pukekohe

219.00m<sup>2</sup> | 4 bdrm



Living Area	183 m <sup>2</sup>
Garage Area	36 m <sup>2</sup>
<b>Total Floor Area</b>	<b>219 m<sup>2</sup></b>
Home Width	11.7 m
Home Length	23.8 m
Land Area	693 m <sup>2</sup>

The images may show features which may not be included in the standard plan or price. Your local Jennian New Home Consultant will confirm standard features and discuss your ideas. All plans remain the copyright of Jennian Homes.