





## 37 Jack Hanley Drive, Jacks Point, Queenstown

 3	 2	 2	 2	 2
---	---	---	---	---

Nestled at the base of the Remarkables mountain range, in the ever-popular Hanley's Farm, is our new "House and Income" Display Home which incorporates a separate unit; the main house has three bedrooms and the unit one bedroom, complete with bathroom and kitchen. The show home features a pavilion design that aptly reflects the mountain environment it is situated in, while also offering a balance of stylish and functional elements in its interior design. It has a great outlook for the living area and a nice private barbecue alfresco outdoor area; There's good indoor-outdoor flow. It's all open plan living which then goes to a master bedroom with an ensuite.

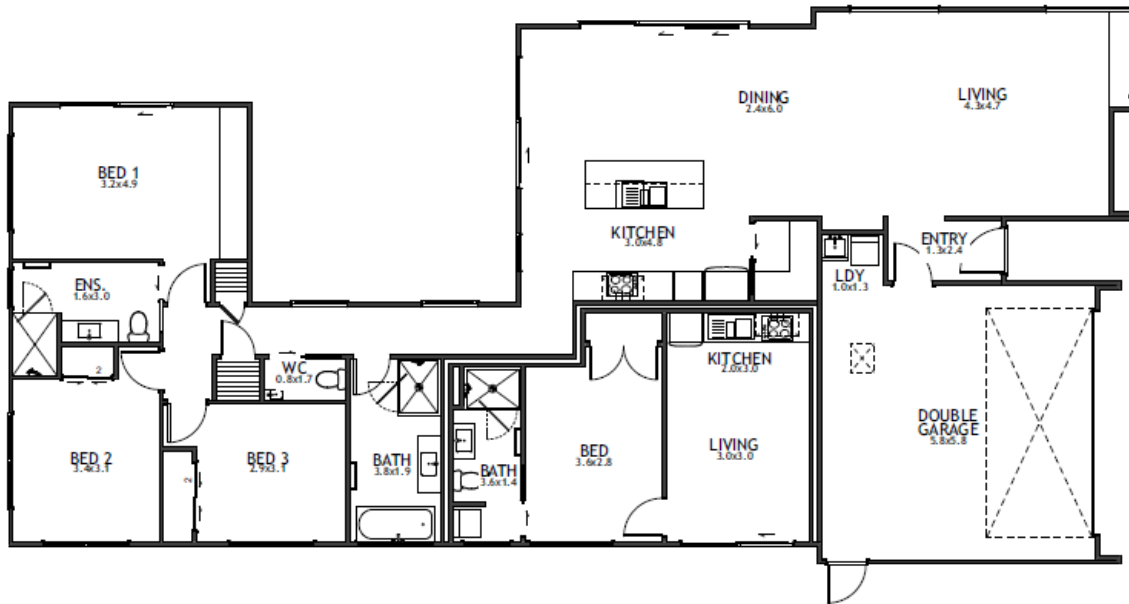
### Central Otago and Queenstown

37 Jack Hanley Drive, Hanleys Farm, Queenstown

P 03 746 7263

E [central.otago@jennian.co.nz](mailto:central.otago@jennian.co.nz)

[jennian.co.nz](http://jennian.co.nz)



The images may show features which may not be included in the standard plan or price. Your local Jennian New Home Consultant will confirm standard features and discuss your ideas. All plans remain the copyright of Jennian Homes.