

# House and Land Package

FROM \$775,000

**Jennian**  
HOMES



## New Beginning in Bellgrove

 3	 2	 1	 2	 2
---	---	---	---	---

This three-bedroom, two-bathroom home offers an inviting dining and living space, with walk-in pantry and well appointed kitchen. To add a touch of privacy, the generous master suite with its own ensuite and walk-in robe is separated from the main bedrooms/bathroom.

The package includes:

146m<sup>2</sup> House & 391m<sup>2</sup> Land

Interior Joinery & Colour consultation

Fisher & Paykel Appliances

Panasonic Heatpump

Clothesline & Letterbox

Hard Landscaping (Vehicle Crossing, Driveway, Patios)

10yr Master Build Guarantee

36mth Defect Warranty

### Canterbury

212 Main South Road, Sockburn, Christchurch

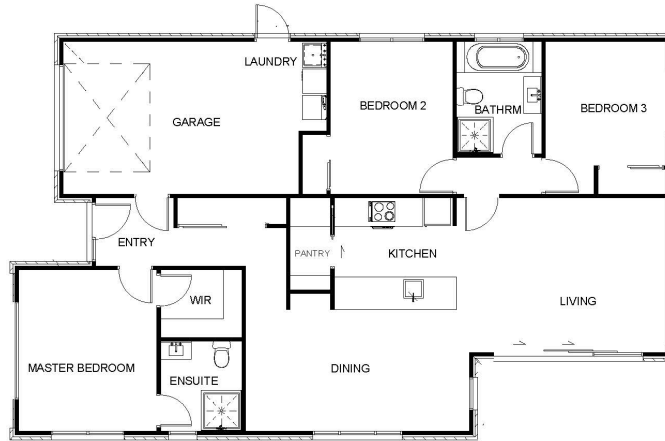
P 03 741 1436

E [canterbury@jennian.co.nz](mailto:canterbury@jennian.co.nz)

[jennian.co.nz](http://jennian.co.nz)

# New Beginning in Bellgrove

146.30m<sup>2</sup> | 3 bdrm



Living Area	122.7 m <sup>2</sup>
Garage Area	23.6 m <sup>2</sup>
<b>Total Floor Area</b>	<b>146.3 m<sup>2</sup></b>
Home Width	13.5 m
Home Length	16.3 m
Land Area	391 m <sup>2</sup>

The images may show features which may not be included in the standard plan or price. Your local Jennian New Home Consultant will confirm standard features and discuss your ideas. All plans remain the copyright of Jennian Homes.