








## 63 Collier Drive, Halswell, Christchurch

 3	 2	 2	 2	 1
---	---	---	---	---

Here's an exciting chance to witness the exceptional Jennian Homes quality and standard firsthand. Welcome to our stunning Halswell Display Home! Designed with family-living in mind, this modern 159m<sup>2</sup> property boasts a light-filled open plan living and kitchen, three bedrooms, an ensuite, and a family bathroom. The generous garage provides ample space for vehicles and storage, ensuring you have everything you need for a comfortable, low-maintenance lifestyle.

### Canterbury

212 Main South Road, Sockburn, Christchurch

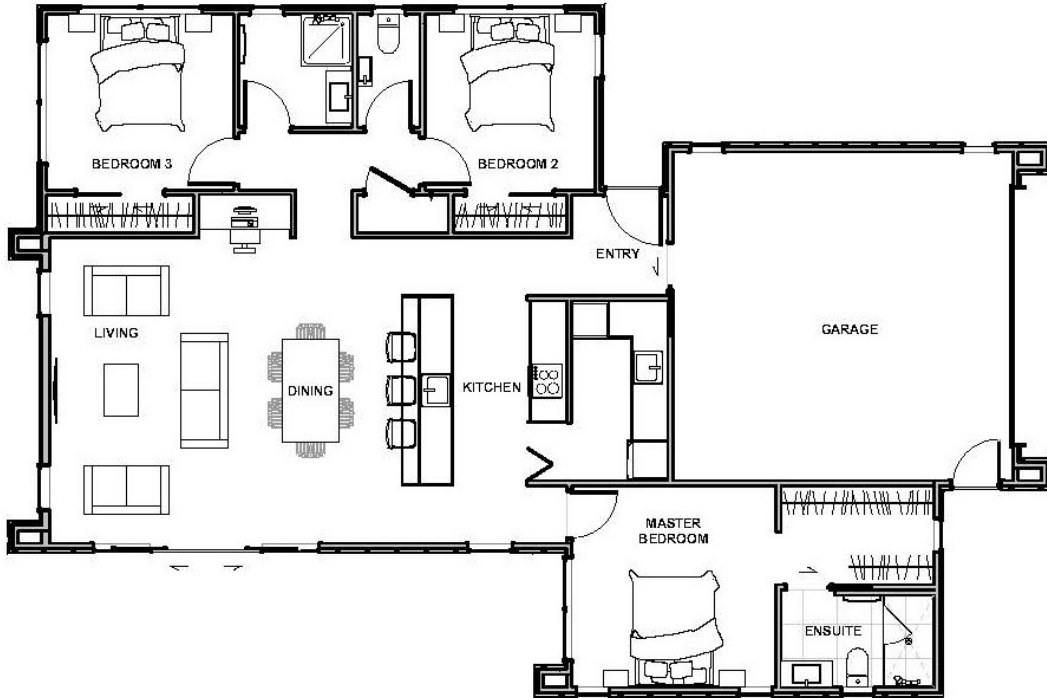
**P** 03 741 1436

**E** [canterbury@jennian.co.nz](mailto:canterbury@jennian.co.nz)

**jennian.co.nz**

# 63 Collier Drive, Halswell, Christchurch

159.80m<sup>2</sup> | 3 bdr



Living Area	125.6 m <sup>2</sup>
Garage Area	34.2 m <sup>2</sup>
<b>Total Floor Area</b>	<b>159.8 m<sup>2</sup></b>
Home Width	11.8 m
Home Length	18.2 m

The images may show features which may not be included in the standard plan or price. Your local Jennian New Home Consultant will confirm standard features and discuss your ideas. All plans remain the copyright of Jennian Homes.