








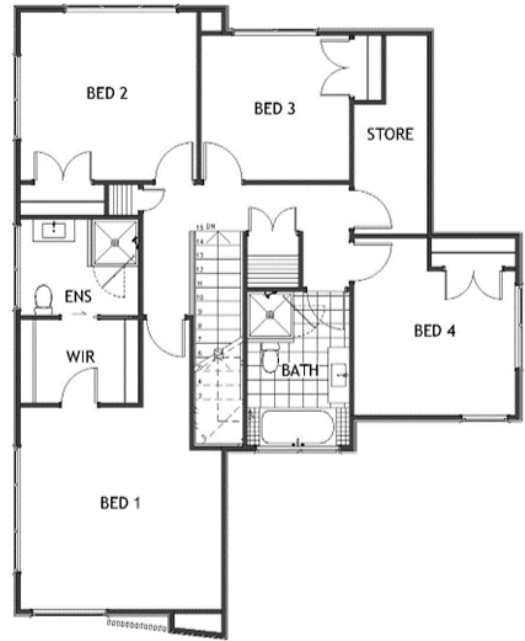
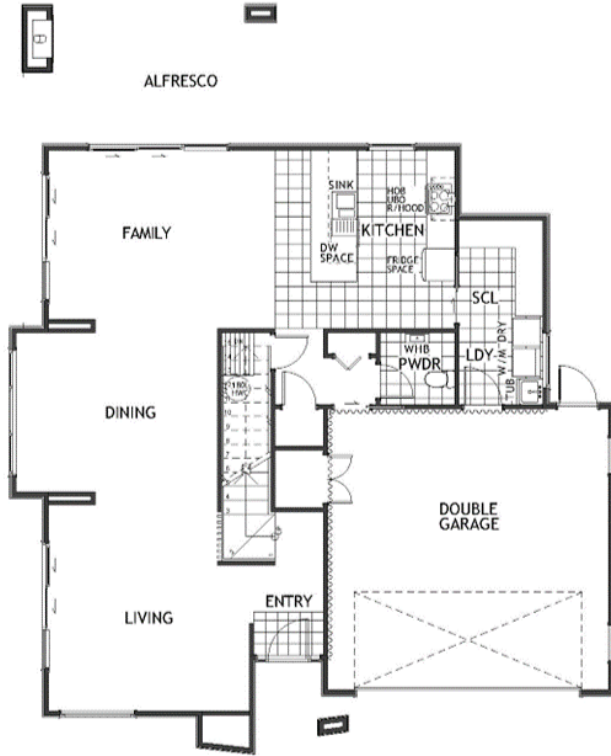
Platinum

| | | | | |
|---|---|---|---|---|
|  4 |  2 |  2 |  3 |  3 |
|---|---|---|---|---|

This townhouse style home really is an entertainer's delight, with luxuriously large living spaces and separate dining, spread around the ground floor. The sheltered alfresco area gives you even more room to spread out, while the optional outdoor fireplace will extend your living space all year round.

Platinum

253.46m² | 4 bdrms



| | |
|-------------------------|-----------------------------|
| Living Area | 215.94 m ² |
| Garage Area | 37.52 m ² |
| Total Floor Area | 253.46 m² |
| Home Width | 12.9 m |
| Home Length | 16.01 m |

The images may show features which may not be included in the standard plan or price. Your local Jennian New Home Consultant will confirm standard features and discuss your ideas. All plans remain the copyright of Jennian Homes.