

House and Land Package

FROM \$819,000



Jennian
HOMES



8 Plow Way, Papamoa, Bay of Plenty

Our 3-bed, 2-bathroom house and land package is the perfect opportunity for young families, down-sizers, and retirees looking for a beautiful home close to the beach. Located just a stone's throw away from the picturesque Papamoa Beach, this property offers the best of coastal living and convenience.

Scheduled to be completed Mid-April 2025, this house and land package is the ideal choice for those seeking a modern and comfortable home in a sought-after location. Don't miss out on this incredible opportunity to own a beautiful home near Papamoa Beach.

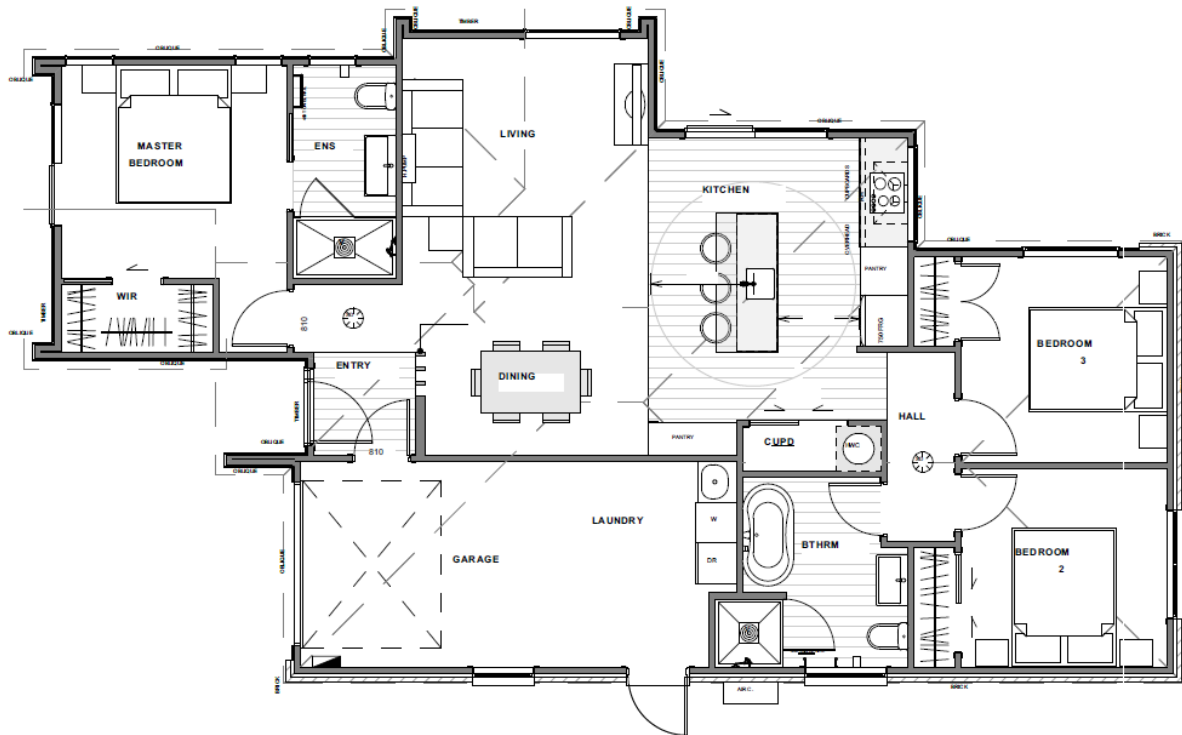
 3	 2	 1	 2	 1
---	---	---	---	---

Tauranga & Western BOP
180 Fifteenth Avenue, Tauranga
P 07 925 9800
E tauranga@jennian.co.nz
jennian.co.nz

Steve Garvey
P 021 306 260
E steve.garvey@jennian.co.nz

8 Plow Way, Papamoa, Bay of Plenty

121.00m² | 3 bdrm



Living Area 121 m²

Land Area 249 m²

The images may show features which may not be included in the standard plan or price. Your local Jennian New Home Consultant will confirm standard features and discuss your ideas. All plans remain the copyright of Jennian Homes.