

# House and Land Package

**FROM \$875,000**

**Jennian**  
HOMES



## 6 Plow Way, Papamoa, Bay of Plenty

 3	 2	 1	 2	 1
---	---	---	---	---

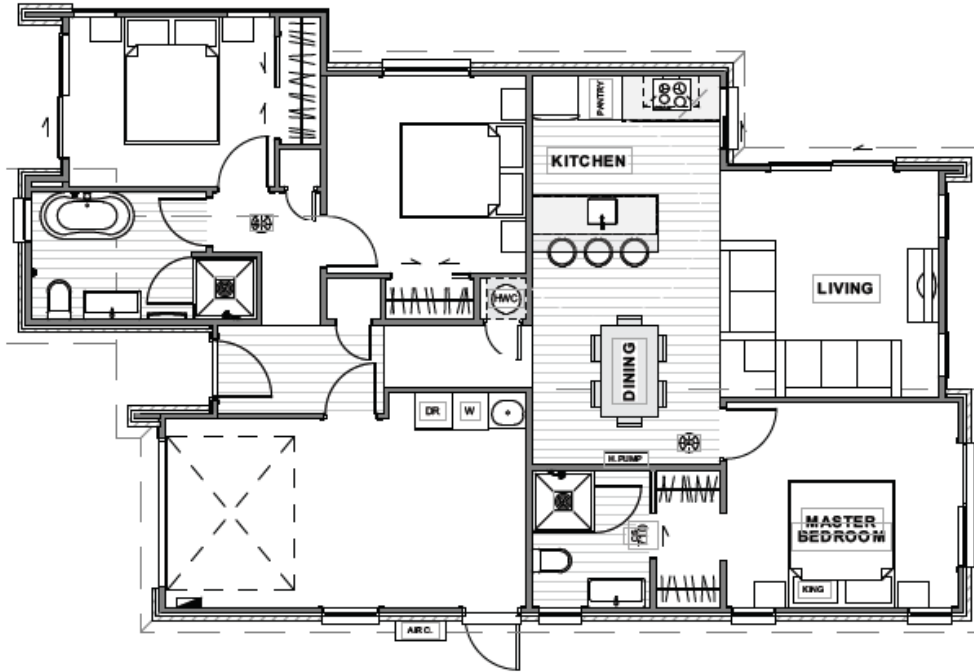
Are you searching for a new home in Papamoa Beach that is both affordable and of high quality? Look no further than this three-bedroom, two-bathroom home. It has been designed with modern, low-maintenance living in mind, making it a great option for first-time buyers, retirees downsizing, or families looking for a modern, lock up and leave home. Investors may also see this as an ideal opportunity to add to their portfolio, with a rental appraisal available.

**Tauranga & Western BOP**  
180 Fifteenth Avenue, Tauranga  
**P** 07 925 9800  
**E** tauranga@jennian.co.nz  
[jennian.co.nz](http://jennian.co.nz)

**Tosca Jensen**  
**P** 021 306 260  
**E** toska.jensen@jennian.co.nz

# 6 Plow Way, Papamoa, Bay of Plenty

122.00m<sup>2</sup> | 3 bdrm



Living Area 122 m<sup>2</sup>

Land Area 240 m<sup>2</sup>

The images may show features which may not be included in the standard plan or price. Your local Jennian New Home Consultant will confirm standard features and discuss your ideas. All plans remain the copyright of Jennian Homes.