






# House and Land Package

POA

**Jennian**  
HOMES



## Lot 26 Lake McKay, Wanaka

 4	 2	 2	 2	 2
---------------------------------------------------------------------------------------	---------------------------------------------------------------------------------------	---------------------------------------------------------------------------------------	---------------------------------------------------------------------------------------	---------------------------------------------------------------------------------------

This Kakapo design is a clever and efficient home designed with today's modern family in mind. With a large open plan living area and four double bedrooms, there is plenty of space for every family member. Sliding exterior doors off the dining and family areas will give excellent outdoor flow onto the large 800m<sup>2</sup> elevated section. Originally a working farm, Lake McKay has been thoughtfully designed to bring prime sites to the community. Sunny, family sized sections offer the best of both worlds with panoramic views across pastoral land to the Grand View mountain range, and all within a few minutes of Wanaka and Hawea, and a short drive to Cromwell. Titles are due April – June 2023.

### Wanaka

2/64 Mount Linton Ave, Northlake, Wanaka 9305

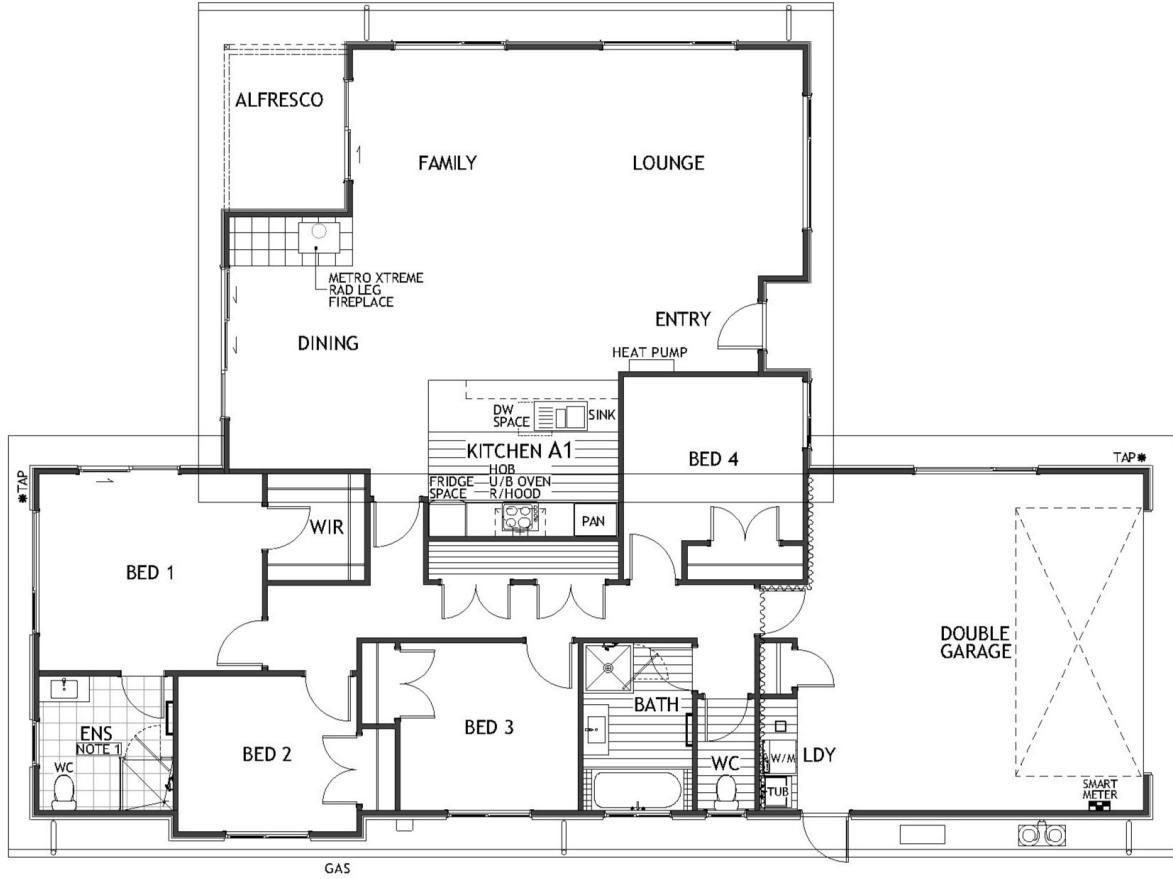
P 021 198 3108

E [wanaka@jennian.co.nz](mailto:wanaka@jennian.co.nz)

[jennian.co.nz](http://jennian.co.nz)

# Lot 26 Lake McKay, Wanaka

196.00m<sup>2</sup> | 4 bdrm



Living Area	196 m <sup>2</sup>
Home Width	14.18 m
Home Length	19.95 m
Land Area	800 m <sup>2</sup>

The images may show features which may not be included in the standard plan or price. Your local Jennian New Home Consultant will confirm standard features and discuss your ideas. All plans remain the copyright of Jennian Homes.