






# House and Land Package

**FROM \$869,000**



## **Lot 616 Atlantic Drive, Palmerston North**

 4	 2	 2	 2	 2
---	---	---	---	---

This beautiful home is perfect for contemporary living. It boasts an ideal layout with seamless indoor-outdoor flow, open-plan living, dining, and kitchen areas featuring a walk-in pantry. Additional features include a separate lounge, laundry, and a main bathroom with a separate toilet. The property features four spacious double bedrooms, including a master bedroom with an en-suite and a walk-in robe. The exterior is made of Linea and plaster, and there is also a double garage.

### **Manawatu**

275 Broadway Avenue, Palmerston North 4414

**P** 06 355 3325

**E** [manawatu@jennian.co.nz](mailto:manawatu@jennian.co.nz)

[jennian.co.nz](http://jennian.co.nz)

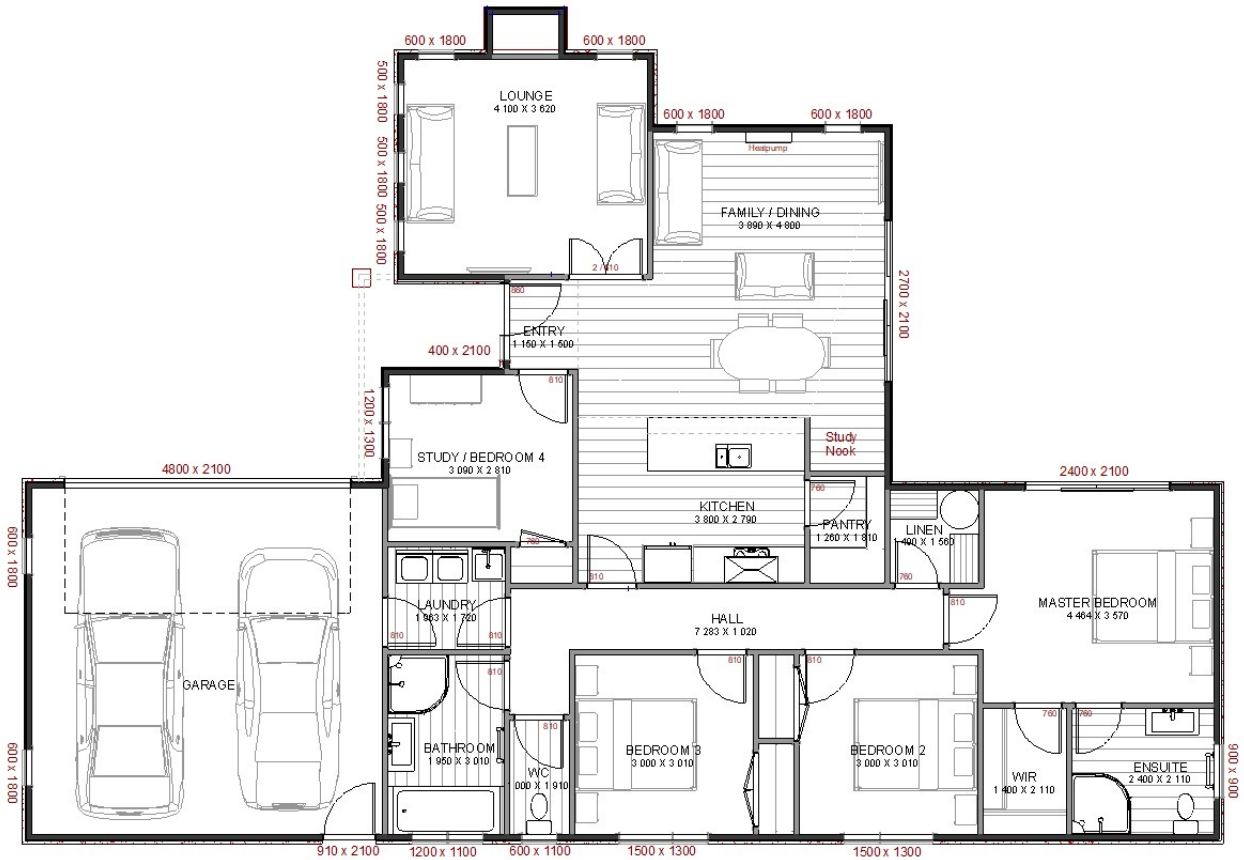
### **Haydon Christian**

**P** 027 300 0390

**E** [haydon.christian@jennian.co.nz](mailto:haydon.christian@jennian.co.nz)

# Lot 616 Atlantic Drive, Palmerston North

173.60m<sup>2</sup> | 4 bdrm



Living Area	139.2 m <sup>2</sup>
Garage Area	34.4 m <sup>2</sup>
<b>Total Floor Area</b>	<b>173.6 m<sup>2</sup></b>
Home Width	14 m
Home Length	20.06 m
Land Area	639 m <sup>2</sup>

The images may show features which may not be included in the standard plan or price. Your local Jennian New Home Consultant will confirm standard features and discuss your ideas. All plans remain the copyright of Jennian Homes.