

# House and Land Package


## FROM \$790,000

**Jennian**  
HOMES



## Lot 108 Tamakuku Terrace, Palmerston North

Experience spacious living at its finest with Lot 108, Tamakuku Terrace! This exceptional property includes three bedrooms and two bathrooms, and seamlessly blending indoor and outdoor spaces through its open-plan kitchen, dining, and living areas. The modern and striking exterior is characterized by contrasting linea and cedar accents that add a touch of contemporary elegance and street appeal. Set on a fully landscaped section, the property offers the convenience of single garaging and off-street parking. Plus, enjoy picturesque views overlooking the reserve. Discover the perfect harmony of style, functionality, and natural beauty at Lot 108, Tamakuku Terrace.

|   |   |   |   |   |
|---|---|---|---|---|
|  3 |  2 |  1 |  2 |  1 |
|---|---|---|---|---|

### Manawatu

275 Broadway Avenue, Palmerston North 4414

**P** 06 355 3325

**E** [manawatu@jennian.co.nz](mailto:manawatu@jennian.co.nz)

[jennian.co.nz](http://jennian.co.nz)

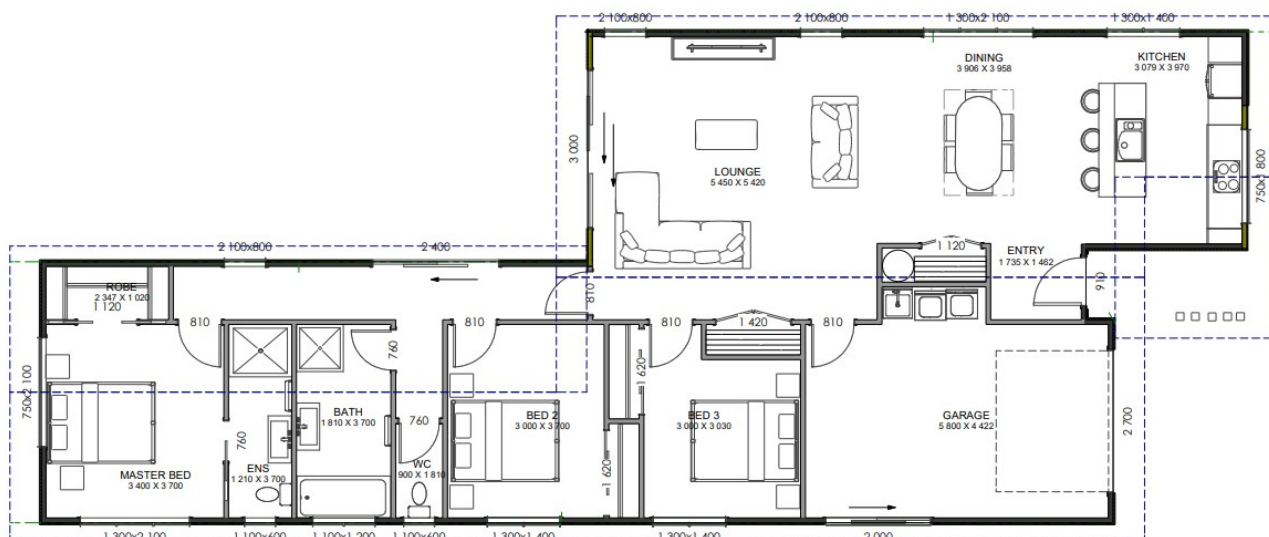
### Haydon Christian

**P** 027 300 0390

**E** [haydon.christian@jennian.co.nz](mailto:haydon.christian@jennian.co.nz)

# Lot 108 Tamakuku Terrace, Palmerston North

156.00m<sup>2</sup> | 3 bdrm



|             |                    |
|-------------|--------------------|
| Living Area | 156 m <sup>2</sup> |
| Home Width  | 9.36 m             |
| Home Length | 16.78 m            |
| Land Area   | 400 m <sup>2</sup> |

The images may show features which may not be included in the standard plan or price. Your local Jennian New Home Consultant will confirm standard features and discuss your ideas. All plans remain the copyright of Jennian Homes.