

# House and Land Package

## FROM \$699,000






**Jennian**  
HOMES



## Ashbury Grove House & Land (Lot 37)

Beautiful, open-plan home featuring generous master bedroom with walk-in wardrobe and ensuite as well as two additional double bedrooms each with sufficient robe space. Main bathroom is separate to the toilet so nobody ever gets caught out. The open space is a great area for entertaining guests with the option to seamlessly spill out onto the patio as required.

Package Includes:  
Quality NZ Made Designer Kitchen  
Rib-Raft Foundation  
Thermally Broken Aluminium Joinery with Low-E Glass  
Panasonic 8kw Heatpump with Wi-Fi  
Hard Landscaping (Driveway, Patios)

|   |   |   |   |   |
|---|---|---|---|---|
|  3 |  2 |  2 |  2 |  1 |
|---|---|---|---|---|

### Canterbury

212 Main South Road, Sockburn, Christchurch

P 03 741 1436

E [canterbury@jennian.co.nz](mailto:canterbury@jennian.co.nz)

[jennian.co.nz](http://jennian.co.nz)

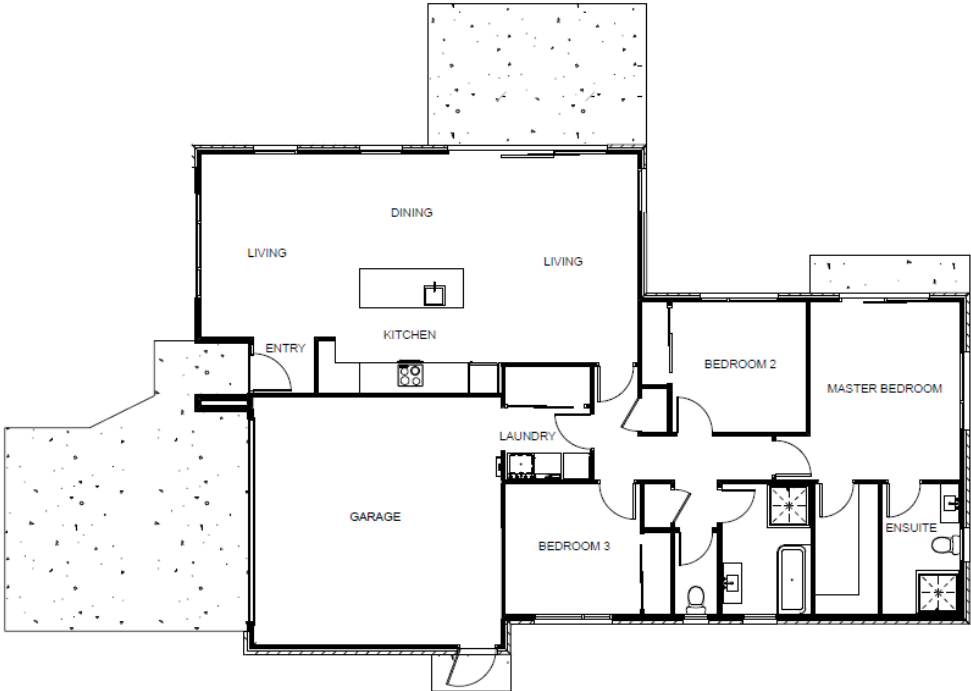
### Michele Strange

P 027 491 5266

E [michele.strange@jennian.co.nz](mailto:michele.strange@jennian.co.nz)

# Ashbury Grove House & Land (Lot 37)

169.00m<sup>2</sup> | 3 bdrm



Living Area 134.2 m<sup>2</sup>

Garage Area 34.8 m<sup>2</sup>

Total Floor Area 169 m<sup>2</sup>

Home Width 11.7 m

Home Length 17.8 m

Land Area 655 m<sup>2</sup>

The images may show features which may not be included in the standard plan or price. Your local Jennian New Home Consultant will confirm standard features and discuss your ideas. All plans remain the copyright of Jennian Homes.