

# House and Land Package

## Enquiries From \$725,000

# Jennian

HOMES



## Lot 12, Crestview, Hokitika

3 | 1 | 2 | 2 | 2

Set within the Crestview subdivision, this home enjoys stunning mountain views and a convenient location just minutes from the heart of Hokitika township. Designed for modern family living, it offers a relaxed lifestyle with light-filled interiors, thoughtful zoning and seamless indoor-outdoor flow.

A central open-plan kitchen anchors the layout, connecting effortlessly to the dining, lounge and outdoor living areas for easy entertaining and everyday comfort. Smart separation between shared and private spaces creates flexibility for growing families, while the generous design balances practicality with style.

This is a home designed to grow with you, offering comfort, functionality and room to make it your own. Talk to the Jennian team today and take the next step towards securing this exceptional home and lifestyle opportunity.

Includes:

- 10-Year Master Build Guarantee,
- Jennian Homes Completion Promise,
- Jennian Homes 36 Month Defects Warranty
- Driveway allowance, clothesline, letterbox

### Jennian Homes West Coast

78 High Street, Greymouth

**M** 027 632 6809

**E** westcoast@jennian.co.nz

[jennian.co.nz](http://jennian.co.nz)

128 Palmerston street Westport

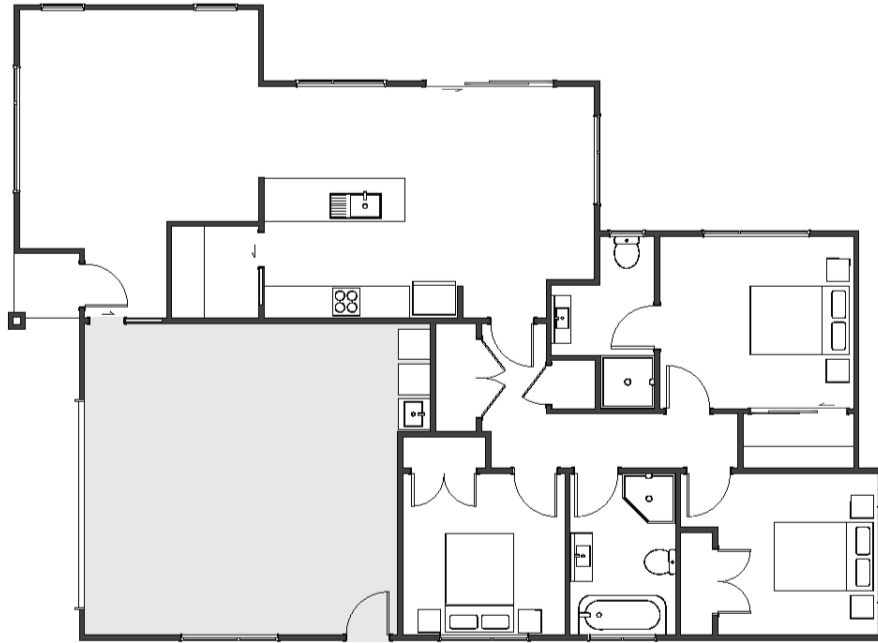
**P** 03 789 5050

**E** westcoast@jennian.co.nz



# Lot 12, Crestview, Hokitika

155m<sup>2</sup> | 3 bdrms



Total/Floor Area 155m<sup>2</sup>

Home Width 12.04m

Home Length 16.24m

Living Area 118.6m<sup>2</sup>

Garage Area 36m<sup>2</sup>

Land Area 455m<sup>2</sup>

The images may show features which may not be included in the standard plan or price. Your local Jennian New Home Consultant will confirm standard features and discuss your ideas. All plans remain the copyright of Jennian Homes.