

House and Land Package

FROM \$995,000

Jennian
HOMES



5 Opaki Meadows, Masterton, Wairarapa



Includes:

- 10 Year Master Build Guarantee
- Jennian Homes Completion Promise
- Jennian Homes 36 Month Defects Warranty

Build your Catalina here!

The Catalina offers an elegant fusion of open-plan living and clever space utilisation, crafting a modern and stylish three bedroom home that's perfectly suited. The living area seamlessly connects with the dining area, kitchen, and outdoor entertainment space, creating a beautiful and inviting haven for entertaining family and friends.

The media room provides a versatile space that can effortlessly transform into guest accommodation, ensuring that your visitors feel right at home. The Catalina offers a spacious master bedroom to serve as your private sanctuary. It features an ensuite bathroom, a large walk-in wardrobe, and a slider that opens up to a private patio area exclusively for your use.

Designed with your lifestyle in mind, the Catalina embodies the perfect balance of style, practicality, and comfort. It's a testament to the exceptional craftsmanship and ingenuity that Jennian Homes takes pride in.

Imagine waking up to incredible views of the stunning Tararua Ranges every day! This elevated 1577m² section offers not only stunning views but also a sense of space, all while being conveniently close to Masterton's CBD, Golf Club and Henley Lake to name a few, but the real joy would be meandering along the Lansdowne walking tracks.

Take the first step towards your dream home and build the Catalina with Jennian Homes Wairarapa. Contact Abby to make your vision a reality.

Jennian
HOMES
Feels like family

Jennian Homes Wairarapa
Abby Schaefer
P 021 242 8802
E abby.schaefer@jennian.co.nz
jennian.co.nz

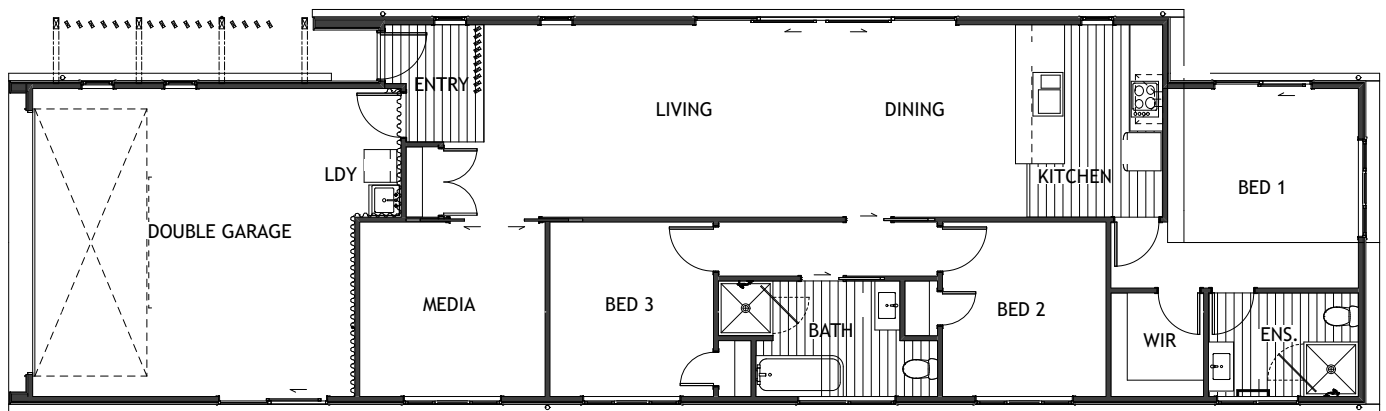
Harcourts

Harcourts
Tim Falloon
M 027 449 2105
E tim.falloon@harcourts.co.nz
Theresa Taylor
M 021 069 9059
E theresa.taylor@harcourts.co.nz

mb
MASTER
BUILDERS

5 Opaki Meadows, Masterton, Wairarapa

160m² | 3 bdrm



| | |
|--------------|----------------------------|
| Living | 122.3m ² |
| Garage | 37.84m ² |
| Total | 160.14m² |
| Home Width | 7m |
| Home Length | 24.8m |
| Land Area | 1577m ² |

The images may show features which may not be included in the standard plan or price. Your local Jennian New Home Consultant will confirm standard features and discuss your ideas. All plans remain the copyright of Jennian Homes.