

# House and Land Package

## FROM \$1,059,500

**Jennian**  
HOMES



## 11 Hereford Drive Carterton, Wairarapa



### Includes:

- 10 Year Master Build Guarantee
- Jennian Homes Completion Promise
- Jennian Homes 36 Month Defects Warranty

### Striking brand new executive living!

Located in popular and central Hereford Drive we are pleased to offer this attractive brand new home to the market by Jennian Homes. Sited for sun on the easy-care 711sqm section the generous 206sqm floor area offers three bedrooms plus office/fourth bedroom, the main with fully tiled ensuite with wet floor shower and walk-in robe. Multiple living spaces include an open plan casual living/dining with scissor truss ceiling, a centrally positioned designer kitchen with walk-in pantry, plus a cosy separate lounge, all leading out through sliding doors to the concrete patio, perfect for outdoor living and entertaining.

Added extras include ducted heating for year round comfort, double garaging with laundry and storage, with hard wearing garage carpet, insulated garage door and off street parking for two vehicles.

Low maintenance construction, a secure and easy care well fenced, professionally landscaped section in a quiet cul-de-sac surrounded by other new homes and a super central and convenient location, just a stone's throw from the centre of town, cafes, and other amenities.

As with all Jennian Homes, you have the peace of mind of a 10 year transferable Master Build Guarantee. When buying a Jennian home, there's confidence in knowing you're signing up with a building company that has been around for over 40 years and has never failed to complete a home in accordance with the terms of the signed Jennian Master Builders Residential Building Contract. Enjoy added protection knowing our extended 36 Month Defects Warranty surpasses industry standards.

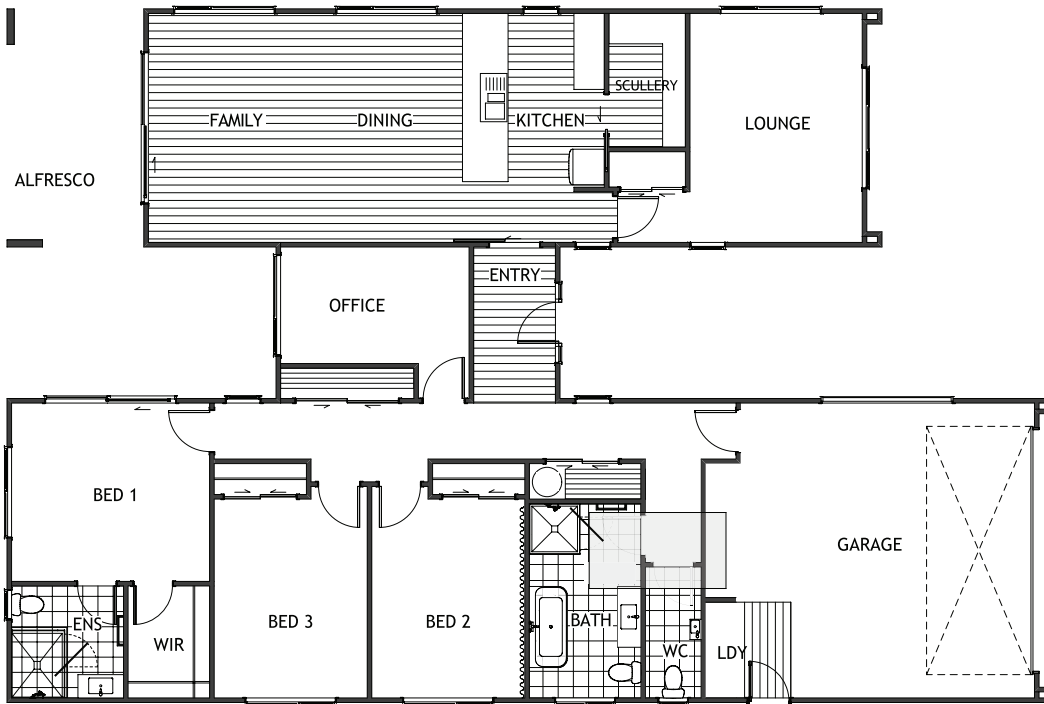
**Jennian Homes Wairarapa**  
200 Chapel Street, Masterton  
**P** 06 370 0777  
**E** wairarapa@jennian.co.nz

[jennian.co.nz](http://jennian.co.nz)

**Abby Schaefer**  
**P** 021 242 8802  
**E** abby.schaefer@jennian.co.nz

# 11 Hereford Drive Carterton, Wairarapa

206m<sup>2</sup> | 4 bdr



Living	168m <sup>2</sup>
Garage	38m <sup>2</sup>
<b>Total</b>	<b>206m<sup>2</sup></b>
Home Width	20.6m
Home Length	13.6m
Land Area	711m <sup>2</sup>

The images may show features which may not be included in the standard plan or price. Your local Jennian New Home Consultant will confirm standard features and discuss your ideas. All plans remain the copyright of Jennian Homes.