






# House and Land Package

FROM \$1,159,600

**Jennian**  
HOMES



## 15 Huria Vista, Pyes Pa, Tauranga, NZ | House and Land

 3	 2	 2	 2	 1
---	---	---	---	---

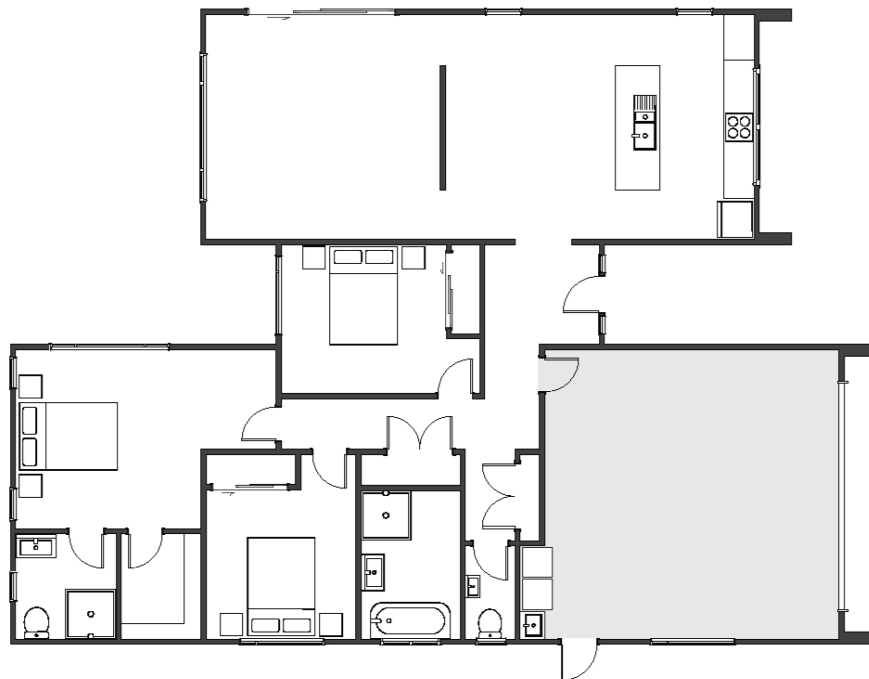
Discover the perfect blend of modern style and family comfort at 15 Huria Vista, located in the sought-after suburb of Pyes Pa, Tauranga. This stunning home sits on a 468m<sup>2</sup> section, offering space, convenience, and lifestyle in one of Tauranga's most desirable areas. Home Features: 3 Bedrooms – including a master suite with luxurious ensuite and generous walk-in wardrobe, 2 Bathrooms – designed for comfort and functionality, Double Garage – secure parking and extra storage, 166.43m<sup>2</sup> Floor Area – spacious and a well-thought-out layout for everyday family living.

**Tauranga & Western BOP**  
180 Fifteenth Avenue, Tauranga  
[jennian.co.nz](http://jennian.co.nz)

**Steve Garvey**  
P 021 306 260  
E [tauranga@jennian.co.nz](mailto:tauranga@jennian.co.nz)

# 15 Huria Vista, Pyes Pa, Tauranga, NZ | House and Land

166.43m<sup>2</sup> | 3 bdrm



Living Area 166.43 m<sup>2</sup>

Home Width 12.7 m

Home Length 17.3 m

Land Area 468 m<sup>2</sup>

The images may show features which may not be included in the standard plan or price. Your local Jennian New Home Consultant will confirm standard features and discuss your ideas. All plans remain the copyright of Jennian Homes.