



## Display Home

37 Jack Hanley Drive, Hanleys Farm,  
Queenstown

 4	 2	 3	 3	 2
---	---	---	---	---

**Open for viewing:** Monday to Saturday 11am - 2pm or by appointment.

There is a room for everyone including paying guests in Jennian's House and Income display home. This is a clever design that comprises the main house with three bedrooms, and a separate unit with one bedroom with its own full kitchen, bathroom and living.

The home's location in Hanley's Farm at the base of the Remarkables mountain range, is the ideal base from which to enjoy New Zealand's adventure playground. The pavilion design aptly reflects the mountain environment and offers a balance of style and function. A large corner window in the living room takes in a great outlook to the front and opens to the dining and kitchen where a bank of skylights floods this central hub with natural light.

Located in a thriving community, surrounded by beautifully built homes, this property offers a unique blend of luxury, comfort and quality. Don't miss the chance to make this exceptional home yours.

### Jennian Homes Central Otago and Queenstown

37 Jack Hanley Drive, Hanley's Farm, Queenstown

**P** 03 746 7263

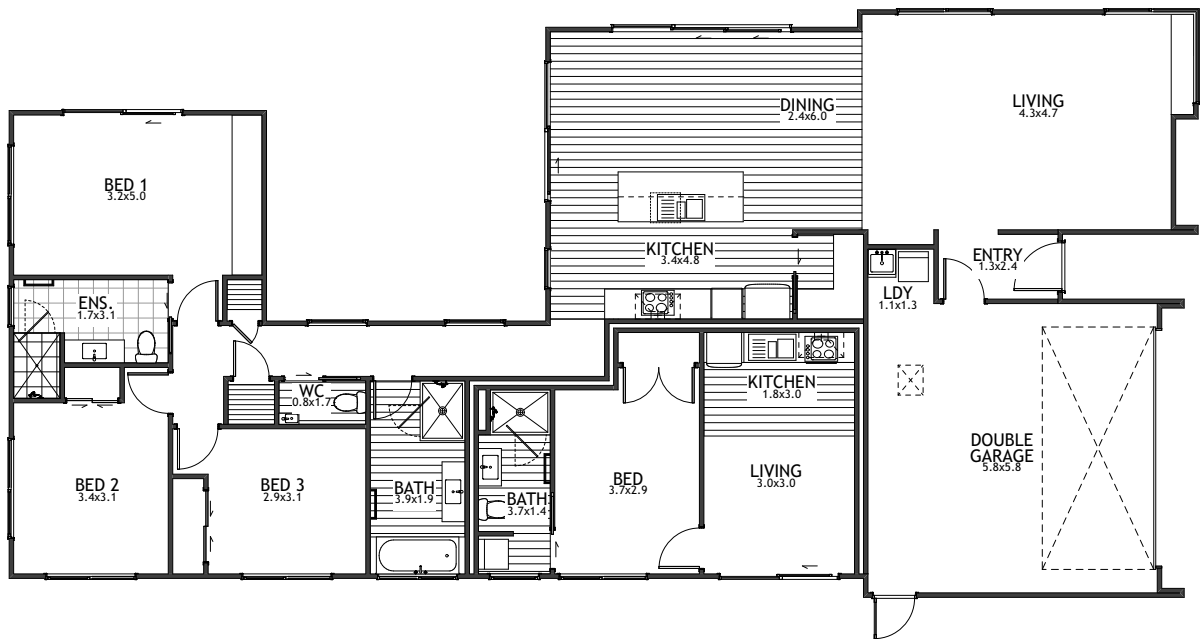
**E** central.otago@jennian.co.nz

[jennian.co.nz](http://jennian.co.nz)



# 37 Jack Hanley Drive, Hanleys Farm, Queenstown

218m<sup>2</sup> | 4 bdr



The images may show features which may not be included in the standard plan or price. Your local Jennian New Home Consultant will confirm standard features and discuss your ideas. All plans remain the copyright of Jennian Homes.