

# Jennian

Living



Living  
Collection










Open spaces,  
real life comfort...

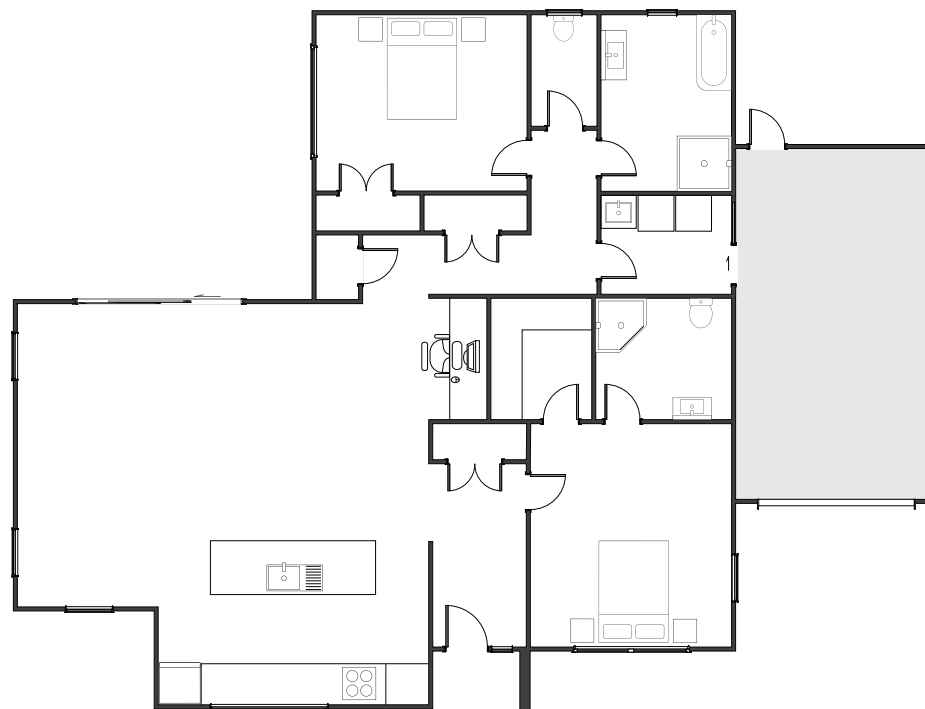
136m<sup>2</sup> | 2 bdrm

## Marlowe

The Marlowe offers a beautifully simple layout built around a sun-filled open-plan kitchen, dining and living space. A dedicated lounge adds versatility, while the master suite is positioned for quiet retreat. With easy indoor-outdoor flow and ample storage, this home is designed for real-life ease and enjoyment.

### KEY FEATURES

-  2 BEDROOMS
-  1 LIVING
-  2 BATHROOMS
-  2 TOILETS
-  1 GARAGE



**Jennian**  
Living



# How we personalise your home...

## Getting to know you...



All new home dreams start with two things. The practical side - a budget. And the emotional side - a wish list. It's our job to bring both together in a way that feels effortless, inspiring, and uniquely you.

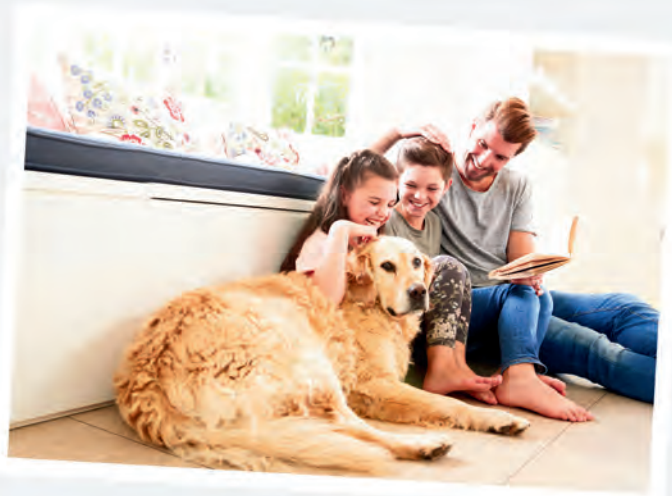
That journey begins with your dedicated Jennian Home Consultant. They'll take the time to really understand what matters to you—not just the essentials, but the personal touches that turn a house into your home.

Maybe you've already found a base plan or style you love. Maybe your Pinterest board is overflowing. Great! We'll take all of that and ask the right questions to spark fresh ideas and uncover possibilities you hadn't even considered.

Because designing your dream home should feel just as exciting as living in it.

## Hint...

If you're looking for ideas and inspiration the Jennian Inspiration Gallery is a great place to start. Explore, save, and share your favourites. [www.jennian.co.nz/design-and-build/inspiration-gallery](http://www.jennian.co.nz/design-and-build/inspiration-gallery)



## Wishlist...

- ☒ An entertainer's kitchen where family and friends can gather.
- ☒ Somewhere to hide away dishes when entertaining like a butler's pantry.
- ☒ An all-weather outdoor space to enjoy the Summer and BBQs with friends.
- ☒ A large garage that can also be used as a workshop.
- ☒ A guest suite that can double as a home office.
- ☒ Within the Elementary High school zone for our kids.

## Dreams Mood Board





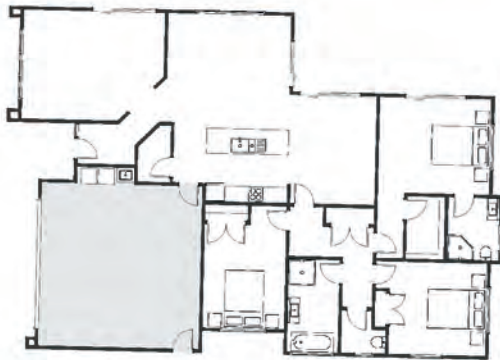
## *Your customised plan...*

With your wish list in hand and mood boards beginning to take shape, it's time to start to bring your vision to life.

Our design team will often begin with a plan that's already inspired you - then tailor it to suit your unique needs, aspirations, and budget. This is where the real magic begins. Every element is carefully considered to reflect the way you want to live.

And it's never just a one-and-done. We'll collaborate closely, revisiting and refining every detail until it feels just right. And, if budget pressures arise, we'll work with you to make smart, thoughtful adjustments - ensuring we stay on track without ever compromising on the things that matter most.

## *Your Perfect Plan*



## *Hint...*

Our website shares a broad range of existing plans, but we have hundreds more available in our system. If you don't see the right inspiration, talk to your New Home Consultant and they'll be able to share a whole lot more.



## *The perfect finishing touches...*

With plans on track, it's time to turn your attention to the finishing touches that will make your home both functional and stunning.

This is where our Interior Design Team steps in - helping you shape the style and atmosphere of every room. From appliances and fittings to flooring, colours, and textures, we'll guide you through each decision, ensuring your home not only looks beautiful but feels uniquely yours. And, by leveraging the national purchasing power of the Jennian Group, you know you're getting exceptional value for money.

## *Interior Design*





## Did you know?

The building industry standard for follow-up maintenance is often limited to 12 months. But at Jennian Homes, we go further.

We offer an **industry-leading 36-Month Defects Warranty\***—providing you with extended protection and lasting peace of mind.

Even better, our Homeowner's Maintenance Schedule helps you stay on top of essential home care with timely reminders and a clear guide to standard maintenance practices—ensuring **your home stays in top condition for years to come.**

Because at Jennian, our commitment to you doesn't end when we hand over the keys to your beautiful new home.

\*For terms and conditions, please refer to the Jennian 36 Month Defects Warranty Policy.







## *Build with complete peace of mind.*

Beginning your journey to build a new home is a big commitment. And you want to be assured it's going to be completed as promised.

**That's why we developed the  
Jennian Homes Completion Promise.**

"The Jennian Franchisor and Franchisees promise to ensure that your home is completed in accordance with the terms and conditions of your signed Jennian Master Builders Residential Building Contract, provided you comply with your signed Master Build 10-Year Guarantee."



**JENNIAN HOMES NORTHLAND**

**P** 09 459 5408

**E** northland@jennian.co.nz

**JENNIAN HOMES COMMERCIAL AUCKLAND**

**P** 09 475 0119

**E** commercial@jennian.co.nz

**JENNIAN HOMES FRANKLIN**

**P** 09 238 6156

**E** franklin@jennian.co.nz

**JENNIAN HOMES HAURAKI & COROMANDEL**

**P** 07 865 6767

**E** coromandel@jennian.co.nz

**JENNIAN HOMES WAIKATO**

**P** 07 949 7770

**E** waikato@jennian.co.nz

**JENNIAN HOMES TAURANGA & WESTERN BOP**

**P** 07 925 9800

**E** tauranga@jennian.co.nz

**JENNIAN HOMES WHAKATANE**

**P** 021 024 11002

**E** whakatane@jennian.co.nz

**JENNIAN HOMES TAUPO**

**P** 021 302 303

**E** taupo@jennian.co.nz

**JENNIAN HOMES HAWKES BAY**

**P** 021 243 9124

**E** hawkesbay@jennian.co.nz

**JENNIAN HOMES MANAWATU**

**P** 06 355 3325

**E** manawatu@jennian.co.nz

**JENNIAN HOMES WAIRARAPA**

**P** 06 370 0777

**E** wairarapa@jennian.co.nz

**JENNIAN HOMES WELLINGTON**

**P** 04 586 9525

**E** wellington@jennian.co.nz

**JENNIAN HOMES NELSON BAYS**

**P** 03 544 4390

**E** nelson@jennian.co.nz

**JENNIAN HOMES MARLBOROUGH**

**P** 03 578 2017

**E** marlborough@jennian.co.nz

**JENNIAN HOMES WEST COAST**

**P** 03 789 5050

**E** westcoast@jennian.co.nz

**JENNIAN HOMES CANTERBURY**

**P** 03 741 1436

**E** canterbury@jennian.co.nz

**JENNIAN HOMES OTAGO**

**P** 03 477 6912

**E** dunedin@jennian.co.nz

**JENNIAN HOMES CENTRAL OTAGO & QUEENSTOWN**

**P** 03 746 7263

**E** queenstown@jennian.co.nz

**JENNIAN HOMES WANAKA**

**P** 021 198 3108

**E** wanaka@jennian.co.nz

**JENNIAN HOMES SOUTHLAND**

**P** 03 422 1287

**E** southland@jennian.co.nz

# Connect with us.

We have offices located throughout New Zealand. For a list of our Display Homes, visit [jennian.co.nz](http://jennian.co.nz)

*We can't wait  
to meet you...*

**Jennian**  
Inspiration

