

RAVENSWOOD

Lot 765 Ravenswood

Jennian

HOMES

\$699,500 - FIXED PRICE

 3	 2	 1	 2	 2
---	---	---	---	---

418m² Land | 145.1m² House



The Cantab Amelia, one of our most desired house and land packages! Situated on Lot 765 Ravenswood, this deal is ideal for first home buyers and perfectly priced under the KiwiSaver cap.

Featuring three double bedrooms, open plan kitchen and living with feature separate toilet and bathroom. Situated on an easy, low-care north-facing section, this home is a great way to step on to the property ladder!

Interior joinery and colour consultations are included in this package, allowing you the freedom to select your own scheme throughout the home. The home rests nicely on a low maintenance section with plenty of space to add your own style of landscaping. Vege garden? Trampoline for the kids? You decide!

Canterbury

212 Main South Road, Sockburn, Christchurch

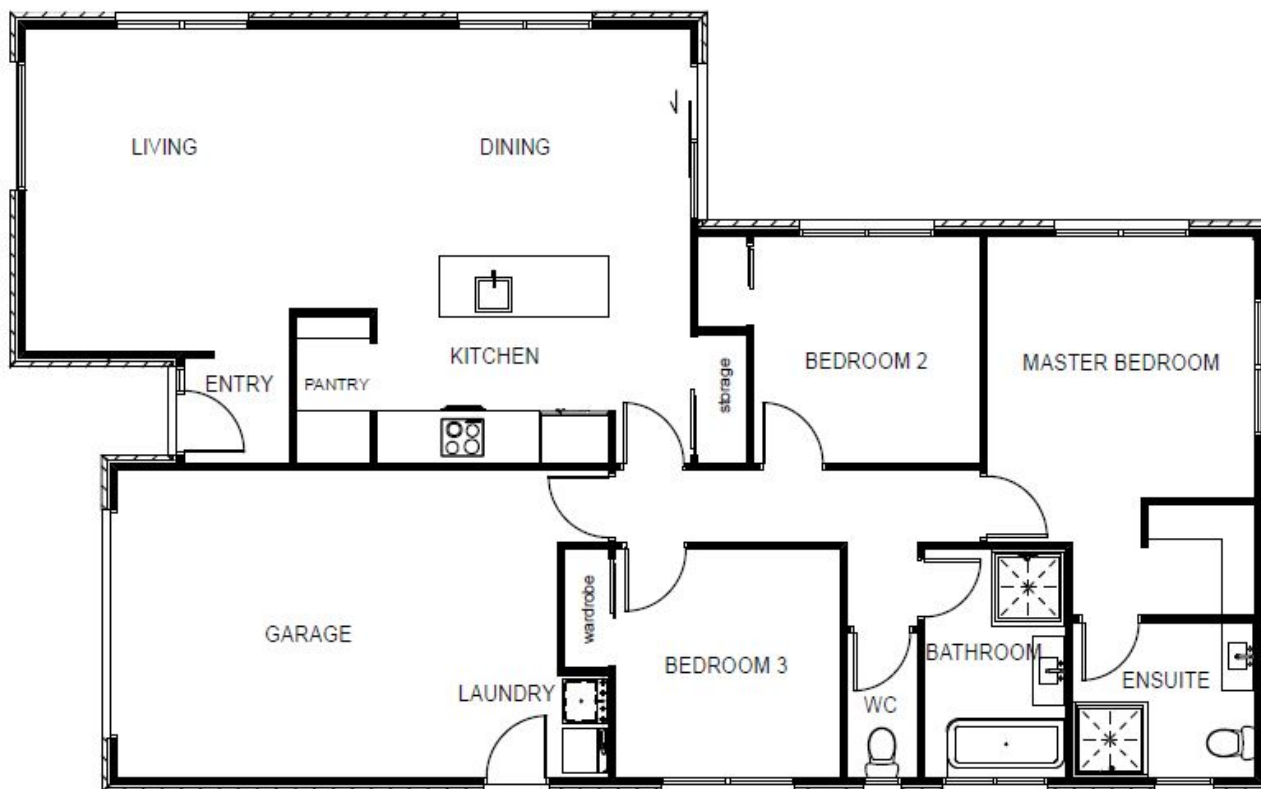
P 03 741 1436

E canterbury@jennian.co.nz

jennian.co.nz

Find us on 





Package Includes:

- 145.1m2 House
- 418m2 Land
- 3 Bedrooms
- Walk-in Pantry
- Thermally Broken Aluminum Joinery with Low-E Glass
- Quality Fisher & Paykel Appliances
- Panasonic Heatpump with Wi-Fi Compatibility
- Fully Insulated Garage
- Hard Landscaping (Vehicle Crossing, Driveway, Patios)
- 10yr Master Build Guarantee
- 36mth Defect Warranty

Living Area	121.5 m ²
Garage Area	23.6 m ²
Total Floor Area	145.1 m²
Home Width	10.3 m
Home Length	16.9 m
Land Area	418 m ²

Canterbury

212 Main South Road, Sockburn, Christchurch

P 03 741 1436

E canterbury@jennian.co.nz

jennian.co.nz

Find us on

