

CHRISTCHURCH

Lot 26 Sabys Estate

Jennian

HOMES

\$895,000 - FIXED PRICE

 3	 2	 1	 2	 1
---	---	---	---	---

507m² Land | 175m² House



As you enter this lovely home, the spacious foyer creates endless decorating opportunities for welcoming your friends and family through the door or the much desired space to hang backpacks and coats. Head around the corner and you'll be greeted by an open plan kitchen and dining area that's perfect for creating delicious meals and enjoying time with loved ones. The added bonus of a walk-in pantry provides the perfect secluded spot for appliances and amenities.

Family bathroom includes a generous sized bath-tub and separate shower. Toilet facilities allocated to a private space in the room next door. The master bedroom suite features its own ensuite bathroom for a lack of disturbance and the direct external access allows convenience when escaping to your outdoor oasis. Three remaining bedrooms are generously sized and provide plenty of space for a growing family or overnight guests.

Canterbury

212 Main South Road, Sockburn, Christchurch

P 03 741 1436

E canterbury@jennian.co.nz

jennian.co.nz

Find us on 

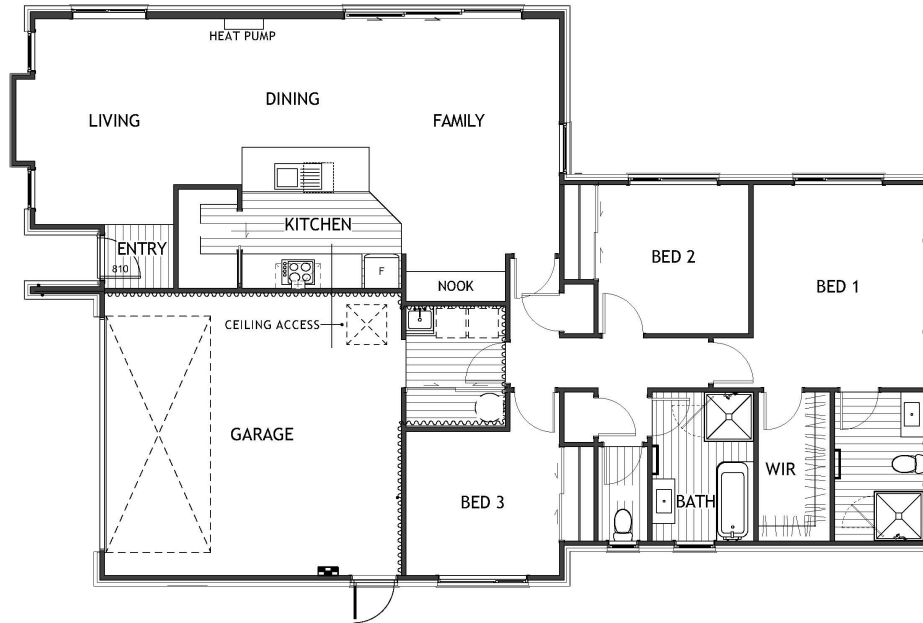


Lot 26 Sabys Estate

Jennian

HOMES

3 2 1 2 1



Package Includes:

- 175m² House
- 507m² Land
- 3 Bedrooms
- Walk-in Pantry
- Thermally Broken Aluminum Joinery with Low-E Glass
- Quality Fisher & Paykel Appliances
- Panasonic Heatpump with Wi-Fi Compatibility
- Fully Insulated Garage
- Hard Landscaping (Vehicle Crossing, Driveway, Patios)
- 10yr Master Build Guarantee
- 36mth Defect Warranty

Living Area 141.4 m²

Garage Area 33.6 m²

Total Floor Area 162.8 m²

Home Width 11.4 m

Home Length 18.5 m

Land Area 507 m²

Canterbury

212 Main South Road, Sockburn, Christchurch

P 03 741 1436

E canterbury@jennian.co.nz

jennian.co.nz

Find us on 

