








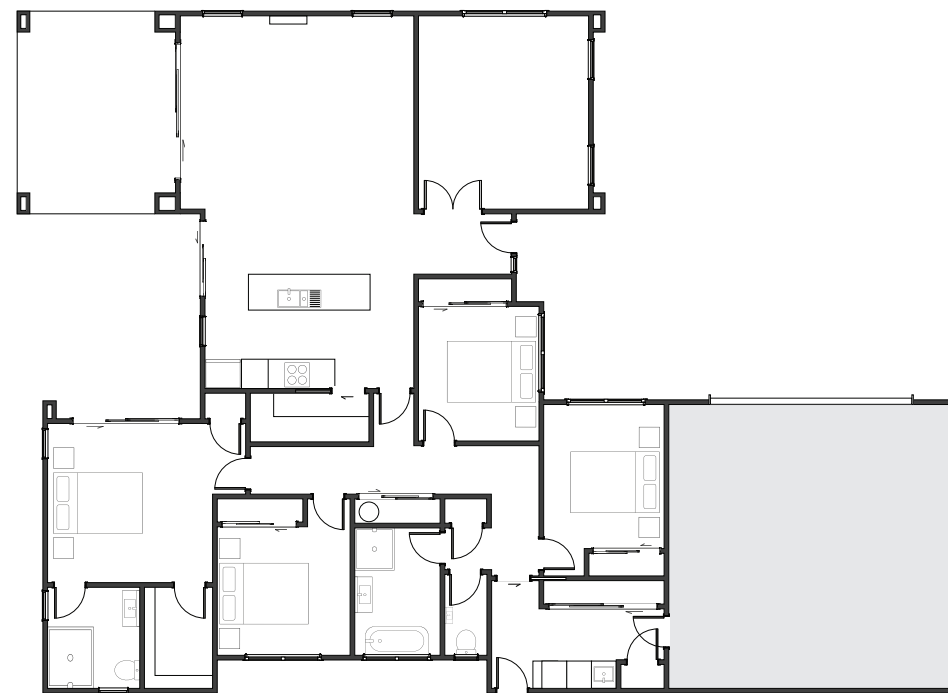
## Liquorice

Inside, the Liquorice is a thoughtfully designed home, offering a central open-plan living space that flows seamlessly to outdoor entertaining areas, perfect for modern family living. A separate lounge creates a cozy retreat, while the private master suite, generous bedrooms, and double garage ensure everyday life is effortlessly catered for.

### KEY FEATURES

-  4 BEDROOMS
-  2 LIVING
-  2 BATHROOMS
-  2 TOILETS
-  2 GARAGE

*Relaxed style,  
contemporary ease...*



Living	202.7m <sup>2</sup>
Garage	50.91m <sup>2</sup>
Alfresco	18.29m <sup>2</sup>
<b>Total</b>	<b>271.9m<sup>2</sup></b>
Home Width	17.02m
Home Length	22.75m







# Jennian

Inspiration



## Customising your home...

**All new home dreams start with two things. The practical side - a budget. And the emotional side - a wish list. It's our job to bring both together in a way that feels effortless, inspiring, and uniquely you.**

That journey begins with your dedicated Jennian Home Consultant. They'll take the time to really understand what matters to you – not just the essentials, but the personal touches that turn a house into your very own architectural statement.

Whether you're starting with style of home you love, an architectural concept, or simply a Pinterest board of likes – we're here for it. We'll explore your ideas, ask the right questions, and offer fresh perspectives you might not have considered.

Because co-designing your dream home should feel just as exciting as living in it.

### WISH LIST

- ✓ An entertainer's kitchen where family and friends can gather
- ✓ Somewhere to hide away dishes when entertaining like a butler's pantry
- ✓ An all-weather outdoor space to enjoy the Summer and BBQs with friends
- ✓ A large garage that can also be used as a workshop
- ✓ A guest suite that can double as a home office
- ✓ Within the school zone for our kids



## Your customised plan.

With your wish list in hand and mood boards beginning to take shape, it's time to start to bring your vision to life.

Our design team will begin with your architect's concept, a base plan that inspires you, or a style you may have seen elsewhere. Regardless of the inspiration, we'll then tailor a plan to suit your unique needs and aspirations. This is where the real magic begins. Every element is painstakingly considered to reflect the way you want to live.

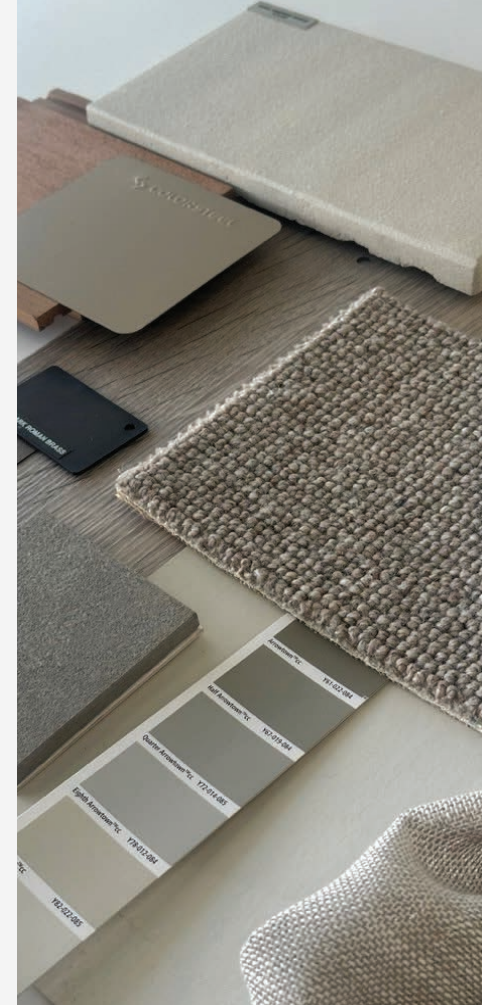
And it's never just a one-and-done. We'll collaborate closely, revisiting and refining every detail until it feels perfect.

## The perfect finishing touches.

With plans on track, it's time to turn your attention to the finishing touches that will make your home both functional and stunning.

This is where our Interior Design Team steps in – helping you shape the style and atmosphere of every room. From appliances and fittings to flooring, colours, and textures, we'll guide you through each decision, ensuring your home not only looks beautiful but feels uniquely yours.

And, by leveraging the national purchasing power of the Jennian Group, you know you're getting exceptional value for money.







We're committed to building communities.

Jennian Homes is proud to be the major sponsor of the Heart Foundation Lottery.

We support this initiative to raise vital funds to help save lives and keep families together for longer.

We are committed to building great communities across New Zealand, and we are pleased to be able to give back by supporting such a worthy cause—one that benefits the lives of so many New Zealanders.

Every ticket sold helps us in our fight against heart disease.



Did you know?

The building industry standard for follow-up maintenance is often limited to 12 months. But at Jennian Homes, we go further.

We offer an **industry-leading 36-Month Defects Warranty\***—providing you with extended protection and lasting peace of mind.

Even better, our Homeowner's Maintenance Schedule helps you stay on top of essential home care with timely reminders and a clear guide to standard maintenance practices—ensuring **your home stays in top condition for years to come.**

Because at Jennian, our commitment to you doesn't end when we hand over the keys to your beautiful new home.

\*For terms and conditions, please refer to the Jennian 36 Month Defects Warranty Policy.







## Join us for a New Home Builders' Info Session.

**Building a home is an exciting journey—but we also know it comes with many questions.**

For over 40 years, Jennian Homes has been creating the homes Kiwis love. We understand the process inside and out, and we're here to guide you every step of the way.

Join our **expert-led building information sessions** to uncover the hidden costs of building, learn how to avoid unexpected surprises, and design a home that's tailored to you—while staying within your budget.

Arm yourself with valuable insights to make informed decisions on your home-building journey. **Contact our local Jennian team** to find out about our next session and reserve your complimentary seat today.



## Build with complete peace of mind.

Beginning your journey to build a new home is a big commitment. And you want to be assured it's going to be completed as promised.

**That's why we developed the  
Jennian Homes Completion Promise.**

"The Jennian Franchisor and Franchisees promise to ensure that your home is completed in accordance with the terms and conditions of your signed Jennian Master Builders Residential Building Contract, provided you comply with your signed Master Build 10-Year Guarantee."



# Connect with us.

We have offices located throughout  
New Zealand. For a list of our Display Homes,  
visit [jennian.co.nz](http://jennian.co.nz)

*We can't wait  
to meet you...*

**Jennian**  
Collections

## JENNIAN HOMES **NORTHLAND**

**P** 09 459 5408

**E** [northland@jennian.co.nz](mailto:northland@jennian.co.nz)

## JENNIAN HOMES **COMMERCIAL AUCKLAND**

**P** 09 475 0119

**E** [commercial@jennian.co.nz](mailto:commercial@jennian.co.nz)

## JENNIAN HOMES **FRANKLIN**

**P** 09 238 6156

**E** [franklin@jennian.co.nz](mailto:franklin@jennian.co.nz)

## JENNIAN HOMES **HAURAKI & COROMANDEL**

**P** 07 865 6767

**E** [coromandel@jennian.co.nz](mailto:coromandel@jennian.co.nz)

## JENNIAN HOMES **WAIKATO**

**P** 07 949 7770

**E** [waikato@jennian.co.nz](mailto:waikato@jennian.co.nz)

## JENNIAN HOMES **TAURANGA & WESTERN BOP**

**P** 07 925 9800

**E** [tauranga@jennian.co.nz](mailto:tauranga@jennian.co.nz)

## JENNIAN HOMES **WHAKATANE**

**P** 021 024 11002

**E** [whakatane@jennian.co.nz](mailto:whakatane@jennian.co.nz)

## JENNIAN HOMES **TAUPO**

**P** 021 302 303

**E** [taupo@jennian.co.nz](mailto:taupo@jennian.co.nz)

## JENNIAN HOMES **HAWKES BAY**

**P** 021 243 9124

**E** [hawkesbay@jennian.co.nz](mailto:hawkesbay@jennian.co.nz)

## JENNIAN HOMES **MANAWATU**

**P** 06 355 3325

**E** [manawatu@jennian.co.nz](mailto:manawatu@jennian.co.nz)

## JENNIAN HOMES **WAIRARAPA**

**P** 06 370 0777

**E** [wairarapa@jennian.co.nz](mailto:wairarapa@jennian.co.nz)

## JENNIAN HOMES **WELLINGTON**

**P** 04 586 9525

**E** [wellington@jennian.co.nz](mailto:wellington@jennian.co.nz)

## JENNIAN HOMES **NELSON BAYS**

**P** 03 544 4390

**E** [nelson@jennian.co.nz](mailto:nelson@jennian.co.nz)

## JENNIAN HOMES **MARLBOROUGH**

**P** 03 578 2017

**E** [marlborough@jennian.co.nz](mailto:marlborough@jennian.co.nz)

## JENNIAN HOMES **WEST COAST**

**P** 03 789 5050

**E** [westcoast@jennian.co.nz](mailto:westcoast@jennian.co.nz)

## JENNIAN HOMES **CANTERBURY**

**P** 03 741 1436

**E** [canterbury@jennian.co.nz](mailto:canterbury@jennian.co.nz)

## JENNIAN HOMES **OTAGO**

**P** 03 477 6912

**E** [dunedin@jennian.co.nz](mailto:dunedin@jennian.co.nz)

## JENNIAN HOMES **CENTRAL OTAGO & QUEENSTOWN**

**P** 03 746 7263

**E** [queenstown@jennian.co.nz](mailto:queenstown@jennian.co.nz)

## JENNIAN HOMES **WANAKA**

**P** 021 198 3108

**E** [wanaka@jennian.co.nz](mailto:wanaka@jennian.co.nz)

## JENNIAN HOMES **SOUTHLAND**

**P** 03 422 1287

**E** [southland@jennian.co.nz](mailto:southland@jennian.co.nz)