

Jennian

Architectural

Where Art
Meets
Function.



Architectural
Collection



Where Art Meets Function.

Homes in the **Jennian Architectural Range** are designed to be simply beautiful. As much a work of art as they are a place to live. A legacy as much as a lifestyle.

Every space is meticulously crafted, with thoughtful attention to detail and superior quality at every turn. From the seamless flow of rooms to the carefully selected materials and finishes, these homes are designed to inspire while enhancing everyday living.

With an unwavering focus on craftsmanship, no detail is overlooked. The result? A home that is not just a visual statement but a masterpiece of function and comfort.

Most importantly, **your vision is at the heart of it all.** Our Architectural homes are a true collaboration—tailored and refined to reflect your unique style, needs, and aspirations. **Create your legacy with Jennian.**

Jennian

Architectural



How we personalise your home...

Getting to know you...

All new home dreams start with two things. The practical side - a budget. And the emotional side - a wish list. It's our job to bring both together in a way that feels effortless, inspiring, and uniquely you.

That journey begins with your dedicated Jennian Home Consultant. They'll take the time to really understand what matters to you – not just the essentials, but the personal touches that turn a house into your very own architectural statement.

Whether you're starting with style of home you love, an architectural concept, or simply a Pinterest board of likes – we're here for it. We'll explore your ideas, ask the right questions, and offer fresh perspectives you might not have considered.

Because co-designing your dream home should feel just as exciting as living in it.

Hint...

If you're looking for ideas and inspiration the Jennian Inspiration Gallery is a great place to start. Explore, save, and share your favourites. www.jennian.co.nz/design-and-build/inspiration-gallery



Wishlist...

- ✓ High-studded open plan kitchen, dining, and living.
- ✓ Flowing to outdoor alfresco dining and lounge area.
- ✓ Second entertainment room.
- ✓ Master with ensuite and walk-in wardrobe.
- ✓ Three other bedrooms including a second guest master with its own ensuite.
- ✓ Office and library.
- ✓ Laundry and ironing room.
- ✓ Double internal access garage and separate boat parking.
- ✓ Swimming Pool incl. landscaping.

Dreams Mood Board

Your customised plan...

With your wish list in hand and mood boards beginning to take shape, it's time to start to bring your vision to life.

Our design team will begin with your architect's concept, a base plan that inspires you, or a style you may have seen elsewhere. Regardless of the inspiration, we'll then tailor a plan to suit your unique needs and aspirations. This is where the real magic begins. Every element is painstakingly considered to reflect the way you want to live.

And it's never just a one-and-done. We'll collaborate closely, revisiting and refining every detail until it feels perfect.

Your Perfect Plan



Hint...

Our website shares a broad range of existing plans, but we have hundreds more available in our system. If you don't see the right inspiration, talk to your New Home Consultant and they'll be able to share a whole lot more.

The perfect finishing touches...

With plans on track, it's time to turn your attention to the finishing touches that will make your home both functional and stunning.

This is where our Interior Design Team steps in – helping you shape the style and atmosphere of every room. From appliances and fittings to flooring, colours, and textures, we'll guide you through each decision, ensuring your home not only looks beautiful but feels uniquely yours. And, by leveraging the national purchasing power of the Jennian Group, you know you're getting exceptional value for money.

Interior Design










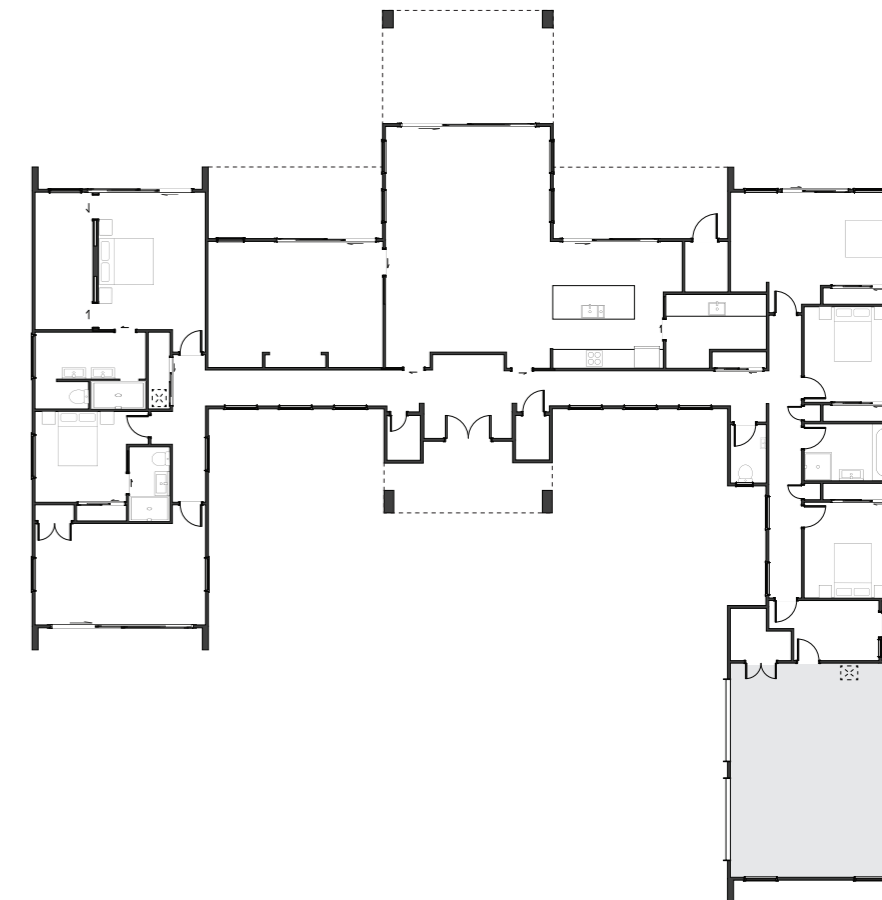
Glenbrook

The Glenbrook offers an elegant take on modern family life, with soaring spaces and carefully curated details throughout. A sun-drenched open-plan hub anchors the home, flowing effortlessly to outdoor living areas, while private bedroom zones and luxurious bathrooms create a true sense of retreat.

KEY FEATURES

-  5 BEDROOMS
-  3 LIVING
-  3 BATHROOMS
-  3 TOILETS
-  2 GARAGES

*Grand proportions,
refined living...*










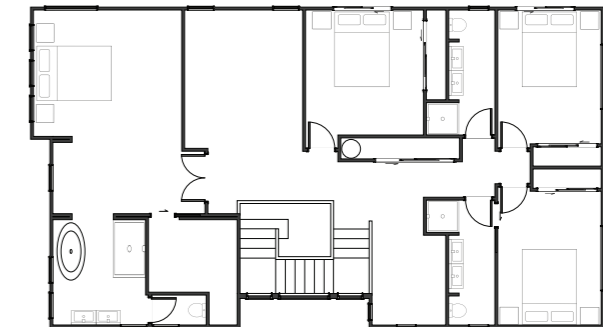
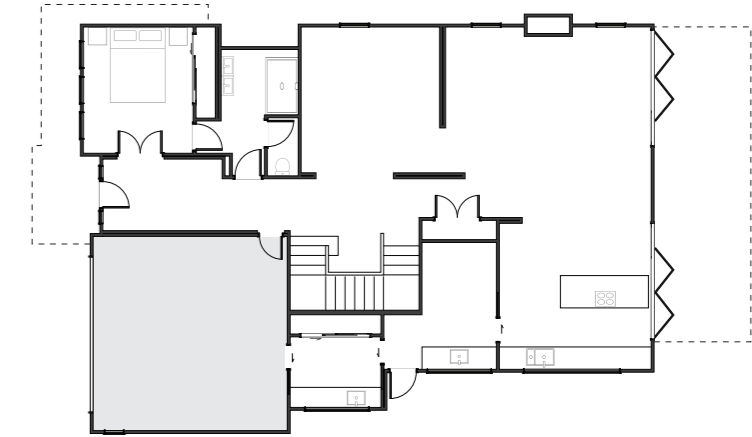
Montauk

The Montauk is a showcase of architectural elegance and generous proportions. A sweeping open-plan layout fills the home with natural light, while oversized bedrooms and a designer kitchen elevate everyday living. Whether you're hosting guests or unwinding with family, this home delivers space, style, and serenity in perfect balance.

KEY FEATURES

-  5 BEDROOMS
-  3 LIVING
-  4 BATHROOMS
-  4 TOILETS
-  2 GARAGES

*Expansive living,
refined design...*










Architectural
Collection



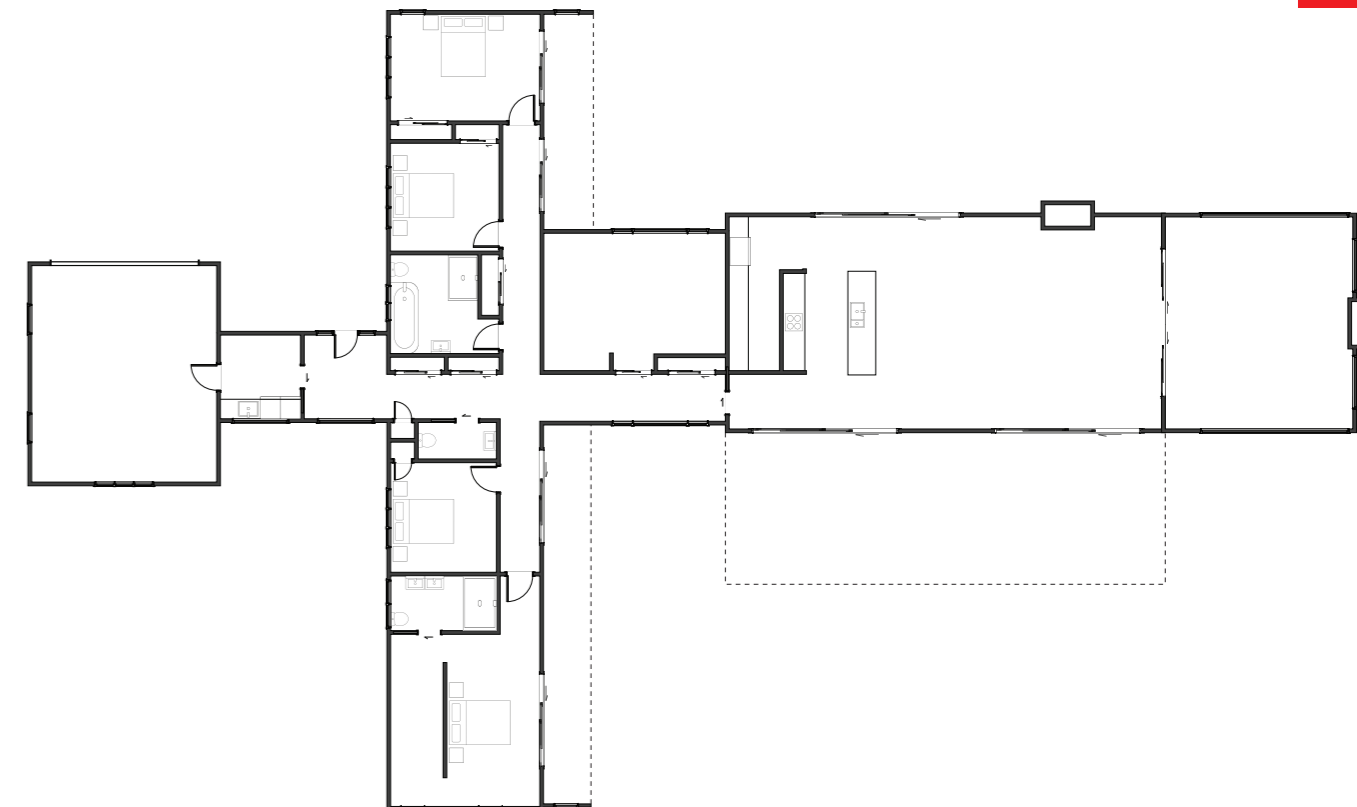
Te Mata

Te Mata is a masterclass in contemporary elegance, where bold exterior lines frame inviting interior spaces. Open-plan living and dining areas connect seamlessly with the outdoors, and the private bedroom wing offers calm, considered spaces for relaxation and rejuvenation.

KEY FEATURES

-  4 BEDROOMS
-  2 LIVING
-  2 BATHROOMS
-  3 TOILETS
-  2 GARAGES

Strength, style and
stunning symmetry...










Countryside

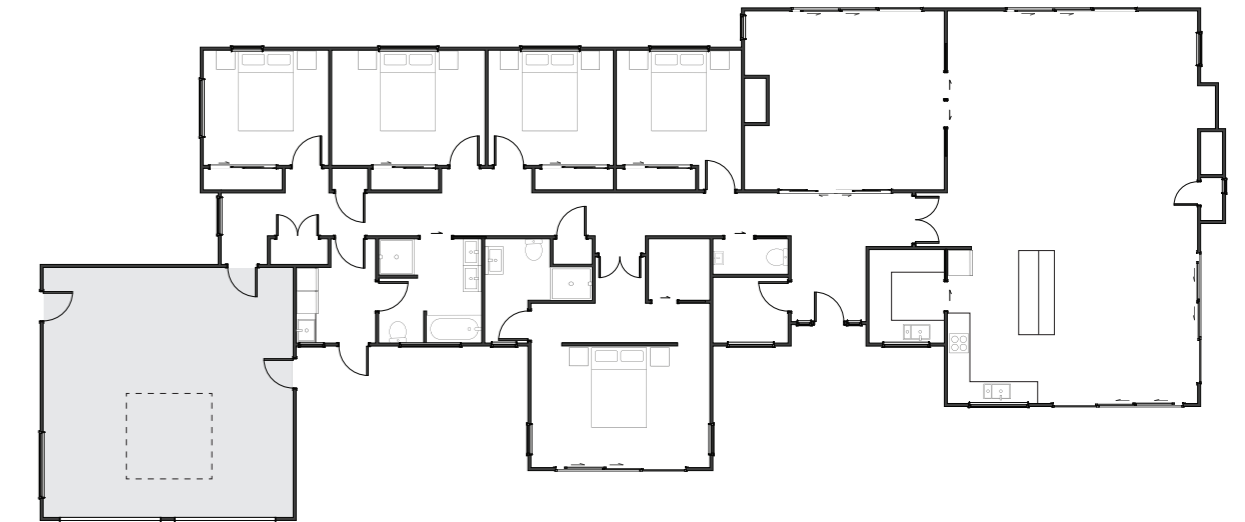
The Countryside captures timeless rural character with a sophisticated twist. Expansive open-plan living and generous outdoor areas invite relaxed entertaining, while the thoughtful bedroom layout and luxurious master suite provide the perfect balance of style and substance.

KEY FEATURES

-  5 BEDROOMS
-  3 LIVING
-  2 BATHROOMS
-  3 TOILETS
-  2 GARAGES



*Modern farmhouse charm,
reimagined...*



325m² | 5 bdrm



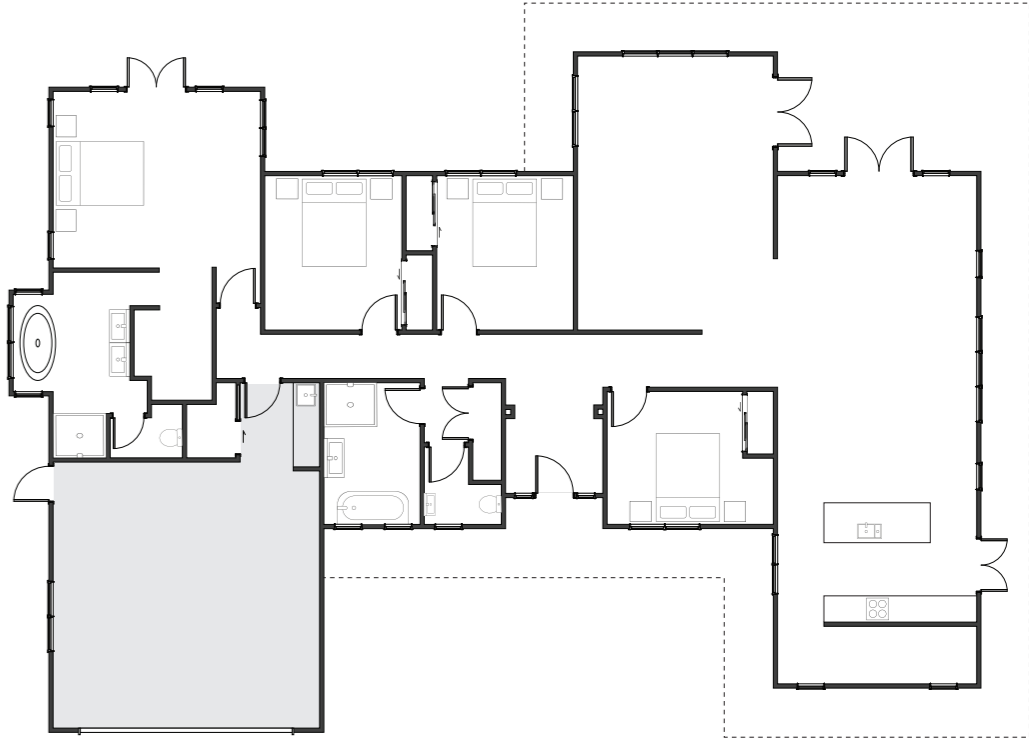
Wainscott

The Wainscott delivers a refined, Hamptons-inspired aesthetic, designed for luxurious yet relaxed living. An impressive entryway leads into a spacious open-plan heart, with formal and casual spaces balanced for every occasion. Outdoor living areas extend the sense of space and light throughout.

KEY FEATURES

- 4 BEDROOMS
- 2 LIVING
- 2 BATHROOMS
- 2 TOILETS
- 2 GARAGES

Classic beauty,
contemporary heart...










Architectural
Collection



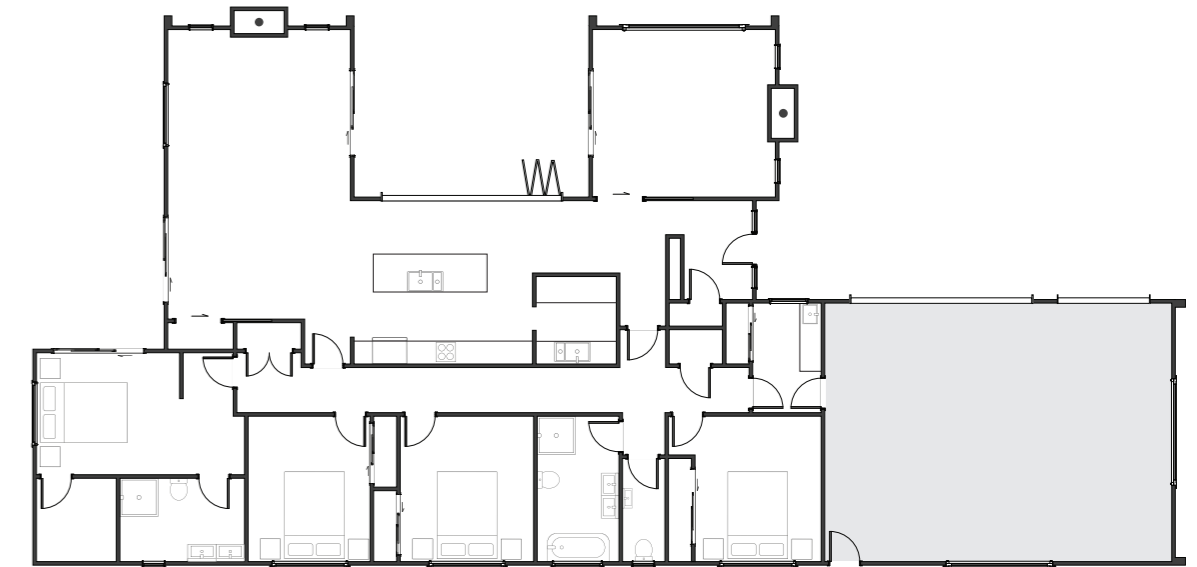
Arataki

The Arataki strikes a perfect balance between bold design and functional simplicity. Its welcoming open-plan living spaces are framed by expansive glazing, connecting seamlessly to the outdoors. A considered layout ensures effortless family living with a sophisticated edge.

KEY FEATURES

-  4 BEDROOMS
-  2 LIVING
-  2 BATHROOMS
-  2 TOILETS
-  3 GARAGES

*Architectural ease,
every day...*








302m² | 4 bdrm



Vantage

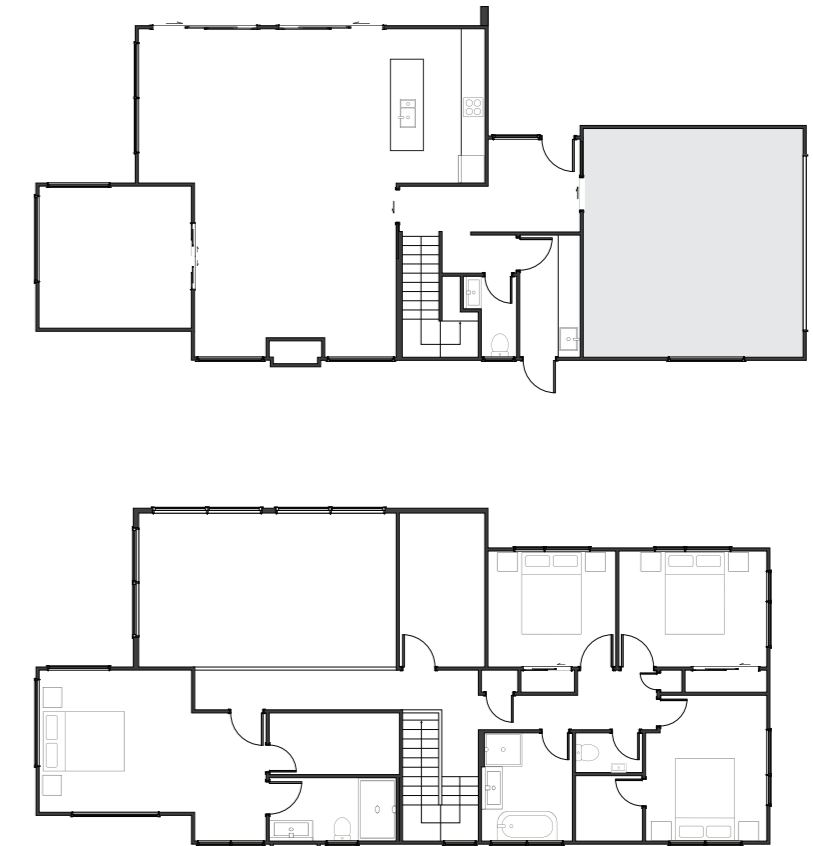
Designed to stand apart, the Vantage offers architectural drama with effortless liveability. From the light-filled central hub to the generous outdoor entertaining zones, every space has been crafted to celebrate connection, comfort, and contemporary style.

KEY FEATURES

-  5 BEDROOMS
-  3 LIVING
-  2 BATHROOMS
-  3 TOILETS
-  2 GARAGES



*Bold lines,
breathtaking spaces...*





Architectural
Collection



Coastline

The Coastline is a modern classic, blending soft coastal influences with crisp architectural design. Expansive living spaces spill naturally onto outdoor areas, while the private bedroom wing ensures serenity and seclusion. A true celebration of relaxed, elevated living.

KEY FEATURES

- 3 BEDROOMS
- 3 LIVING
- 3 BATHROOMS
- 3 TOILETS
- 3 GARAGES



*Inspired by nature,
crafted for life...*





We're committed to building communities.

Jennian Homes is proud to be the major sponsor of the Heart Foundation Lottery.

We support this initiative to raise vital funds to help save lives and keep families together for longer.

We are committed to building great communities across New Zealand, and we are pleased to be able to give back by supporting such a worthy cause—one that benefits the lives of so many New Zealanders.

Every ticket sold helps us in our fight against heart disease.



Did you know?

The building industry standard for follow-up maintenance is often limited to 12 months. But at Jennian Homes, we go further.

We offer an **industry-leading 36-Month Defects Warranty***—providing you with extended protection and lasting peace of mind.

Even better, our Homeowner's Maintenance Schedule helps you stay on top of essential home care with timely reminders and a clear guide to standard maintenance practices—ensuring **your home stays in top condition for years to come.**

Because at Jennian, our commitment to you doesn't end when we hand over the keys to your beautiful new home.

*For terms and conditions, please refer to the Jennian 36 Month Defects Warranty Policy.





Join us for a New Home Builders' Info Session.

Building a home is an exciting journey—but we also know it comes with many questions.

For over 40 years, Jennian Homes has been creating the homes Kiwis love. We understand the process inside and out, and we're here to guide you every step of the way.

Join our **expert-led building information sessions** to uncover the hidden costs of building, learn how to avoid unexpected surprises, and design a home that's tailored to you—while staying within your budget.

Arm yourself with valuable insights to make informed decisions on your home-building journey. **Contact our local Jennian team** to find out about our next session and reserve your complimentary seat today.



Build with complete peace of mind.

Beginning your journey to build a new home is a big commitment. And you want to be assured it's going to be completed as promised.

**That's why we developed the
Jennian Homes Completion Promise.**

"The Jennian Franchisor and Franchisees promise to ensure that your home is completed in accordance with the terms and conditions of your signed Jennian Master Builders Residential Building Contract, provided you comply with your signed Master Build 10-Year Guarantee."



JENNIAN HOMES NORTHLAND

P 09 459 5408

E northland@jennian.co.nz

JENNIAN HOMES COMMERCIAL AUCKLAND

P 09 475 0119

E commercial@jennian.co.nz

JENNIAN HOMES FRANKLIN

P 09 238 6156

E franklin@jennian.co.nz

JENNIAN HOMES HAURAKI & COROMANDEL

P 07 865 6767

E coromandel@jennian.co.nz

JENNIAN HOMES WAIKATO

P 07 949 7770

E waikato@jennian.co.nz

JENNIAN HOMES TAURANGA & WESTERN BOP

P 07 925 9800

E tauranga@jennian.co.nz

JENNIAN HOMES WHAKATANE

P 021 024 11002

E whakatane@jennian.co.nz

JENNIAN HOMES TAUPO

P 021 302 303

E taupo@jennian.co.nz

JENNIAN HOMES HAWKES BAY

P 021 243 9124

E hawkesbay@jennian.co.nz

JENNIAN HOMES MANAWATU

P 06 355 3325

E manawatu@jennian.co.nz

JENNIAN HOMES WAIRARAPA

P 06 370 0777

E wairarapa@jennian.co.nz

JENNIAN HOMES WELLINGTON

P 04 586 9525

E wellington@jennian.co.nz

JENNIAN HOMES NELSON BAYS

P 03 544 4390

E nelson@jennian.co.nz

JENNIAN HOMES MARLBOROUGH

P 03 578 2017

E marlborough@jennian.co.nz

JENNIAN HOMES WEST COAST

P 03 789 5050

E westcoast@jennian.co.nz

JENNIAN HOMES CANTERBURY

P 03 741 1436

E canterbury@jennian.co.nz

JENNIAN HOMES OTAGO

P 03 477 6912

E dunedin@jennian.co.nz

JENNIAN HOMES CENTRAL OTAGO & QUEENSTOWN

P 03 746 7263

E queenstown@jennian.co.nz

JENNIAN HOMES WANAKA

P 021 198 3108

E wanaka@jennian.co.nz

JENNIAN HOMES SOUTHLAND

P 03 422 1287

E southland@jennian.co.nz

Connect with us.

We have offices located throughout New Zealand. For a list of our Display Homes, visit jennian.co.nz

*We can't wait
to meet you...*

Jennian
Inspiration

