

Inspiration



Jennian
HOMES



©2017 Jennian Homes

All rights reserved. No part of this publication may be copied or reproduced in any form, either in whole or in part without written permission of the Publisher. While every effort has been made to ensure the accuracy of the information in this publication, the Publisher assumes no responsibility for errors or omissions or for any consequences of reliance on this publication. Images and photographs in this book may include accessories, furnishings, finishes and features not included in your Residential Building Contract with your Jennian Homes Franchisee. Your New Home Consultant will provide full details of what is and isn't included in your home. Floor area sizes may include alfresco options.



For the home
you've always
wanted...

Jennian
HOMES





Your personality.

At Jennian Homes we pride ourselves on delivering the home you've always wanted. We'll work with you to create a home that reflects your personality and suits your lifestyle. Custom design your home from your ideas, or add your personal touches to one of our market leading plans. The choice is always yours.

Our expertise.

Jennian Homes has been building the homes New Zealanders love for more than 35 years, so you can rest assured you're in safe hands when you choose Jennian Homes.

We're New Zealand's most awarded builder in the Registered Master Builders House of the Year awards, and we complete all of our homes to the same award-winning standards of design, quality and workmanship.

Our superior buying power and industry relationships make a Jennian home exceptional value for money. We deal with trusted New Zealand based suppliers and recognised brands, so you can be sure everything in your home will be of the highest quality.

And we'll stay in touch after you move in. Your new Jennian home will come complete with a 10-year Standard Master Build Guarantee and an industry-leading 36 month remedial maintenance period.

Completion Promise

All Jennian Franchisees and the Franchisor
pledge to complete the construction of your
home to meet the terms and conditions
of the standard Jennian Master Builders
Residential Building Contract.*

Signed

Ada

2016

Franchisor

* This Completion Promise is only applicable
to clients who hold a 10-year Standard or
Premium Master Build Guarantee.



Jennian
HOMES

Your personality Our expertise

For full terms and conditions please refer to the Jennian Homes Completion Guarantee and Indemnity Deed (available to view from your local Franchise).



New Zealand's Most Awarded and Trusted Builder.

The Registered Master Builders House of the Year celebrates building excellence in New Zealand. It awards the best homes and builders and the craftsmanship behind them. Jennian franchisees have won more of these awards than any other building brand. All our homes are designed and built to award winning standards. For the home you've wanted from New Zealand's most awarded builder, contact Jennian Homes today.





35+ years

We have been building the homes New Zealanders love more than 35 years, so you can rest assured you're in safe hands when you choose Jennian Homes.



Peace of mind

Jennian Franchisees offer a 36 month defects warranty. That's a whopping 24 months longer than the current industry standard. For you, that's real peace of mind.



100% kiwi

Jennian only deals with New Zealand's leading building suppliers and manufacturers. We are proud to be 100% kiwi owned and operated.



Community wellbeing

Community wellness and the health of all New Zealanders is very important to us and we are proud supporters of the Heart Foundation amongst other initiatives.

For more information visit jennian.co.nz







Be
inspired.

Your new home can be whatever you want it to be; a proven plan that's tried and true, or a completely unique design created to complement your personality and lifestyle. Often, it will be something in between the two. That's when a little inspiration can help.

We've carefully selected a range of home designs to provide inspiration for your new home. Use one as the starting point for your own creation, or combine elements from several to form the home that's perfect for you and your family.

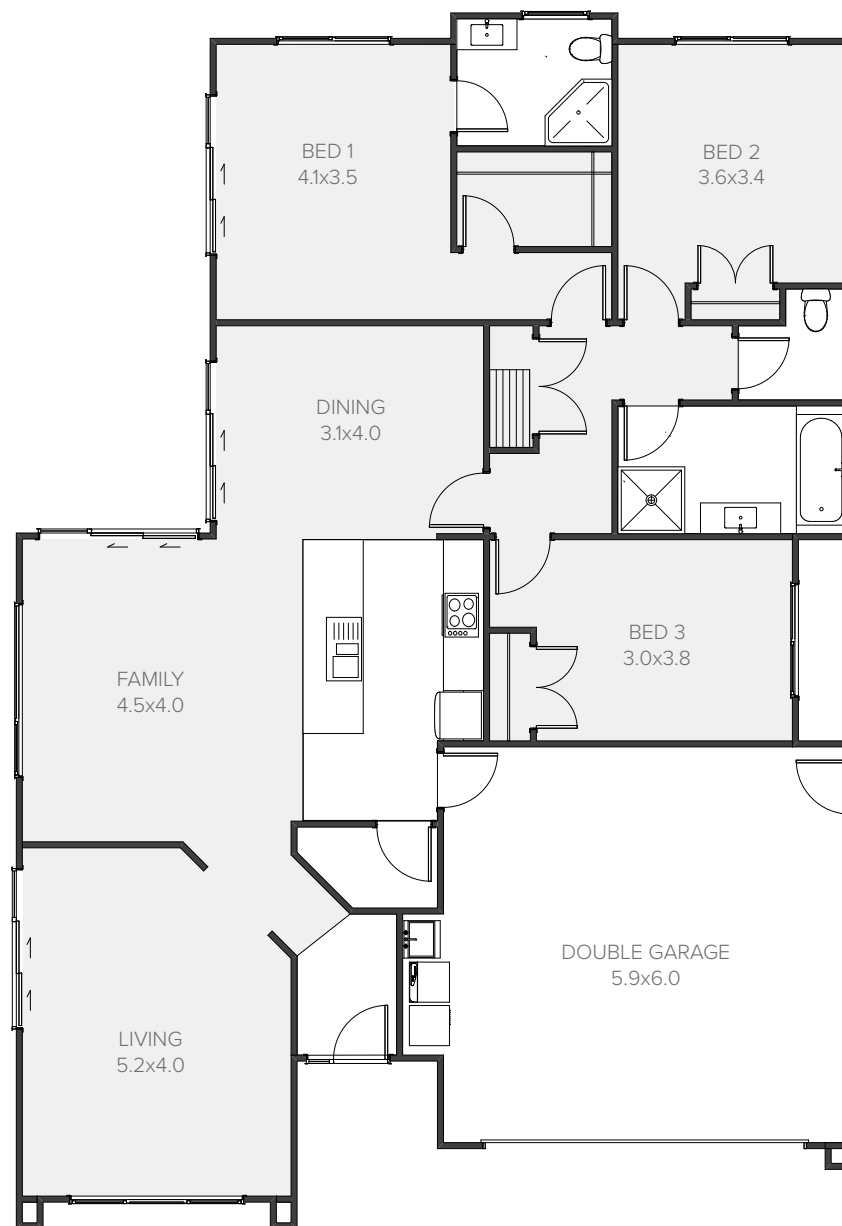


Mead

 3	 2	 2	 2	 2
---------------------------------------------------------------------------------------	---------------------------------------------------------------------------------------	---------------------------------------------------------------------------------------	---------------------------------------------------------------------------------------	---------------------------------------------------------------------------------------

Suburban sanctuary

The Mead is a carefully considered three bedroom design with all the modern conveniences sought after by the growing family. This three bedroom home features large open dining and living areas, plus a formal lounge perfect for five star hospitality. The generous master bedroom doubles as a parental retreat and boasts a walk-in wardrobe plus ensuite.





186m² | 3 bdrms

Living	147.38m ²
Garage	38.38m ²
Total	185.76m ²
Home Width	12.50m
Home Length	18.19m



Windermere

 3	 1	 2	 2	 2
---------------------------------------------------------------------------------------	---------------------------------------------------------------------------------------	---------------------------------------------------------------------------------------	---------------------------------------------------------------------------------------	---------------------------------------------------------------------------------------

Alfresco living

Spacious, creative design by Jennian. Unique entry detailing invites exploration of this exciting home with strong emphasis on alfresco living. The designer kitchen is perfectly located as the family and social hub, and access to the huge sheltered alfresco space from three sides effectively merges indoors and outdoors. A spacious master suite, two more double rooms and plentiful storage completes this fabulous home.

199m² | 3 bdrn



Living	140.02m ²
Garage	37.82m ²
Alfresco	21.31m ²
Total	199.15m ²
Home Width	13.08m
Home Length	24.00m



Cook

3

2

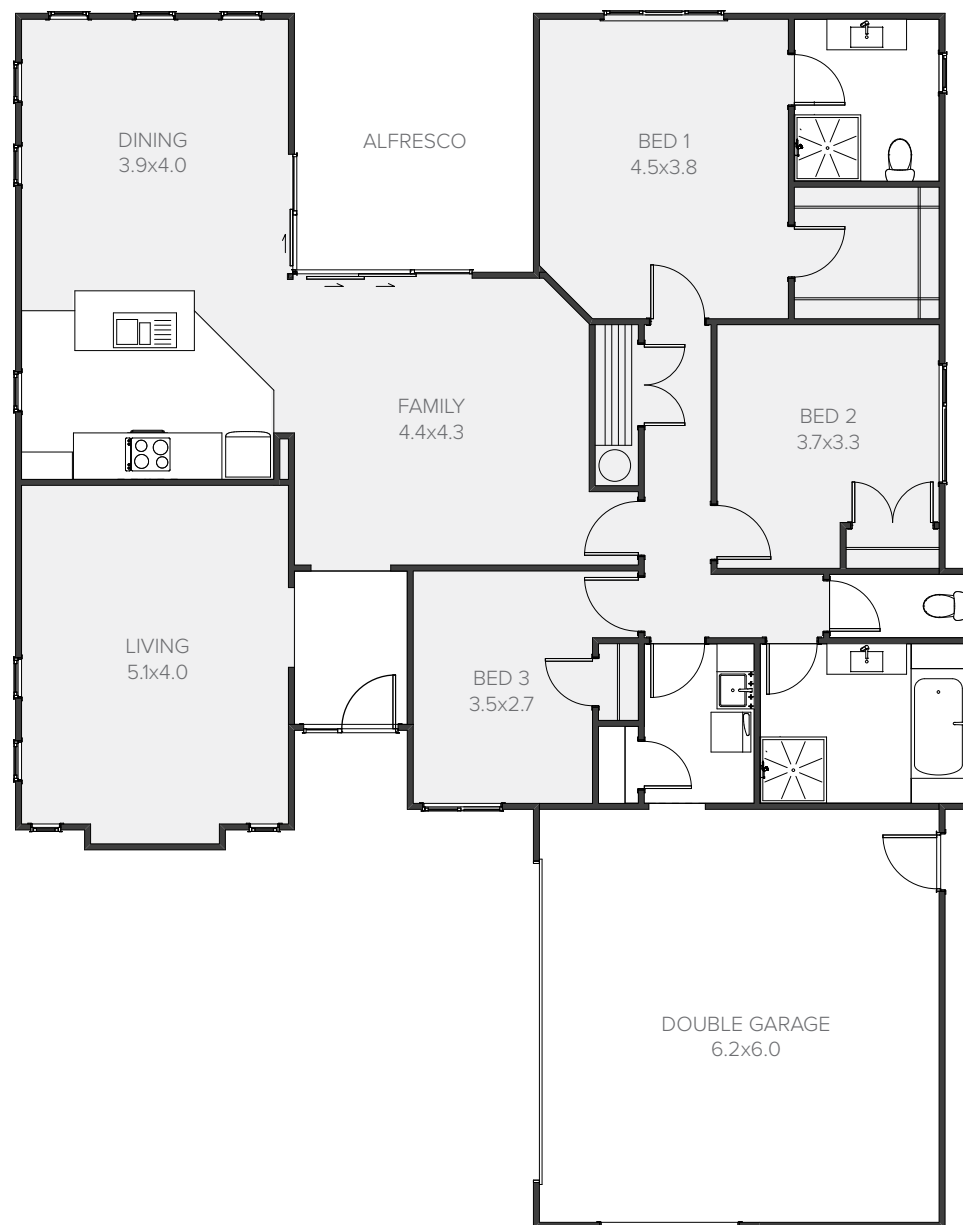
2

2

2

Striking symmetry

This generously proportioned home features a separate formal lounge, which could be a home theatre. The open-plan family/ dining area features stylish corner sliding doors opening out onto the alfresco area. The full length windows in the lounge and dining areas create striking symmetry. A separate laundry and ample storage, including attic space over the garage, complete this great family home.








201m² | 3 bdrm

Living	151.06m ²
Garage	43.25m ²
Alfresco	6.65m ²
Total	200.96m²
Home Width	14.40m
Home Length	18.30m

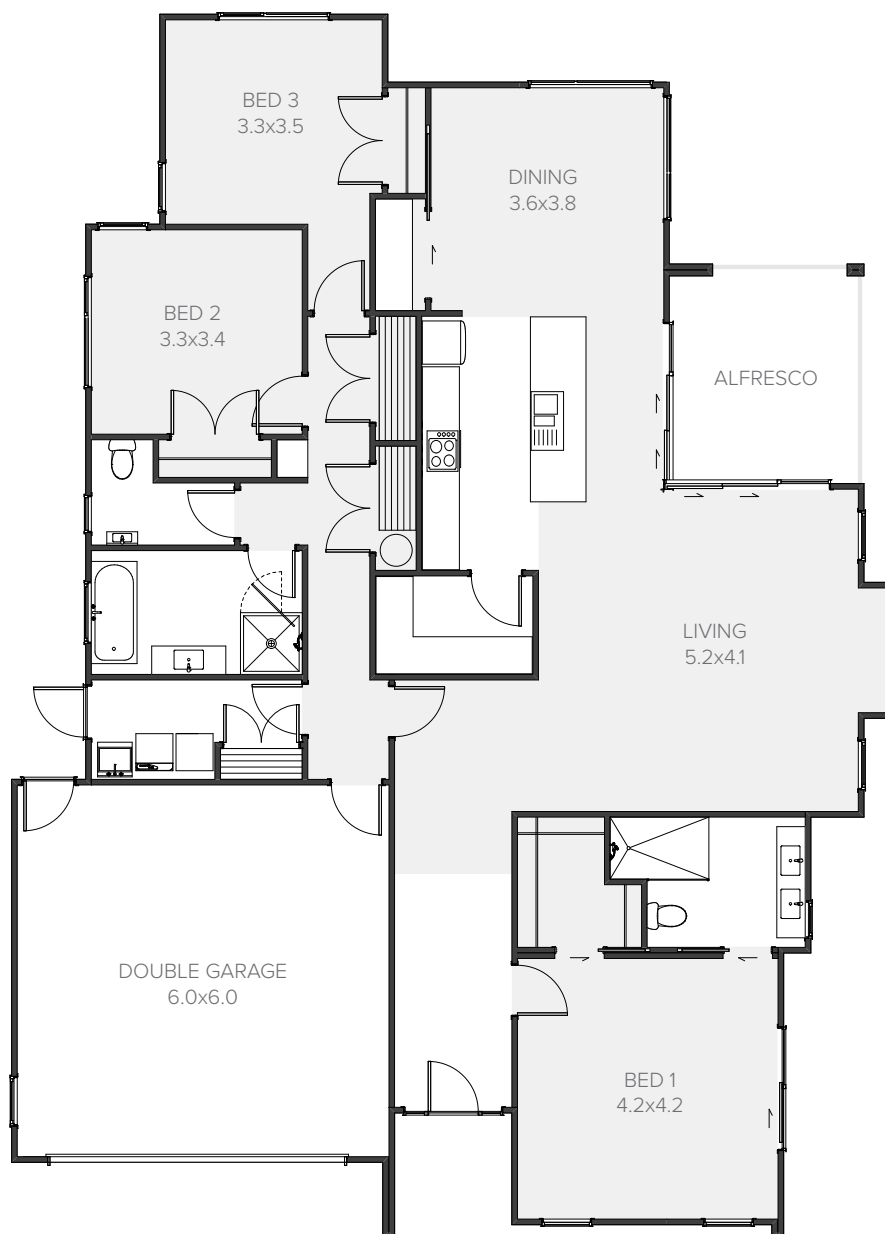


Langdale

 3	 1	 2	 2	 2
---------------------------------------------------------------------------------------	---------------------------------------------------------------------------------------	---------------------------------------------------------------------------------------	---------------------------------------------------------------------------------------	---------------------------------------------------------------------------------------

Rest and relaxation

The Langdale may have striking street appeal but it's more than just a pretty face. This three bedroom home exudes contemporary charm and luxury. The open-plan living area is the heart of the home and the contemporary kitchen serves up easy everyday living while catering to keen entertainers. The scullery is well-equipped with plenty of storage and bench space. Glass sliders open from the living spaces to an inviting outdoor area, where it's easy to serve meals alfresco.



218m² | 3 bdrm




Living	169.02m ²
Garage	37.74m ²
Alfresco	11.07m ²
Total	217.83m ²
Home Width	14.30m
Home Length	19.81m







Merlot

 3	 2	 2	 2	 2
---------------------------------------------------------------------------------------	---------------------------------------------------------------------------------------	---------------------------------------------------------------------------------------	---------------------------------------------------------------------------------------	---------------------------------------------------------------------------------------

Spacious family living

This substantial family home ticks all the boxes with its generous open-plan living area giving you oodles of space. At its heart is a large central kitchen featuring a walk-in scullery that's as practical as it is pretty. This and the feature lounge surround the large outdoor space created by this home's layout. The master is a private and separate escape with large glazed sliding doors that can open onto your own patio.








220m² | 3 bdrm

Living	180.94m ²
Garage	39.53m ²
Total	220.47m ²
Home Width	14.51m
Home Length	19.97m



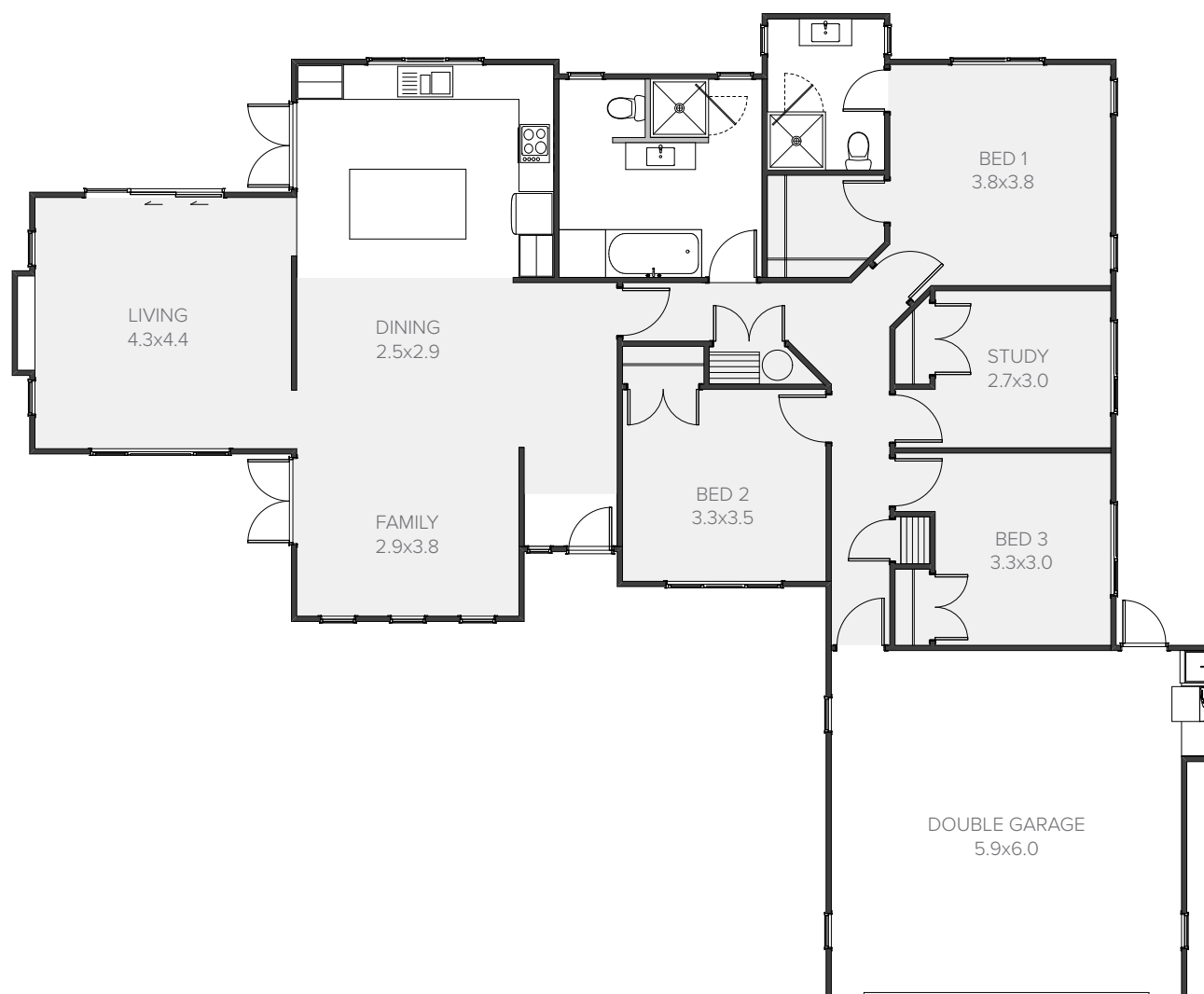
Vanita

 4	 2	 2	 2	 2
---------------------------------------------------------------------------------------	---------------------------------------------------------------------------------------	---------------------------------------------------------------------------------------	---------------------------------------------------------------------------------------	---------------------------------------------------------------------------------------

Entertainer's paradise

The large open-plan kitchen, dining and living area form the hub of this entertainer's paradise, while a separate lounge for more formal occasions extends out onto a fabulous private court yard and entertainment area. Just down the passage you'll find four bedrooms and a unique contemporary bathroom. A stylish family home.

196m² | 4 bdrm



Living	157.06m ²
Garage	38.44m ²
Total	195.50m²
Home Width	16.96m
Home Length	20.73m



Summerhill

 4	 2	 2	 2	 2
---------------------------------------------------------------------------------------	---------------------------------------------------------------------------------------	---------------------------------------------------------------------------------------	---------------------------------------------------------------------------------------	---------------------------------------------------------------------------------------

Upscale urban oasis

Let the world know you've arrived. This upscale urban oasis will make the neighbours green with envy with its low-maintenance contemporary styling and superb street appeal. A mixture of classic brick and weather board on the outside, and stylish family living within.



208m² | 4 bdrm

Living	164.38m ²
Garage	37.62m ²
Alfresco	6.17m ²
Total	208.17m ²
Home Width	13.58m
Home Length	23.61m



Asti

 4	 2	 2	 2	 2
---------------------------------------------------------------------------------------	---------------------------------------------------------------------------------------	---------------------------------------------------------------------------------------	---------------------------------------------------------------------------------------	---------------------------------------------------------------------------------------

Take life to a new level

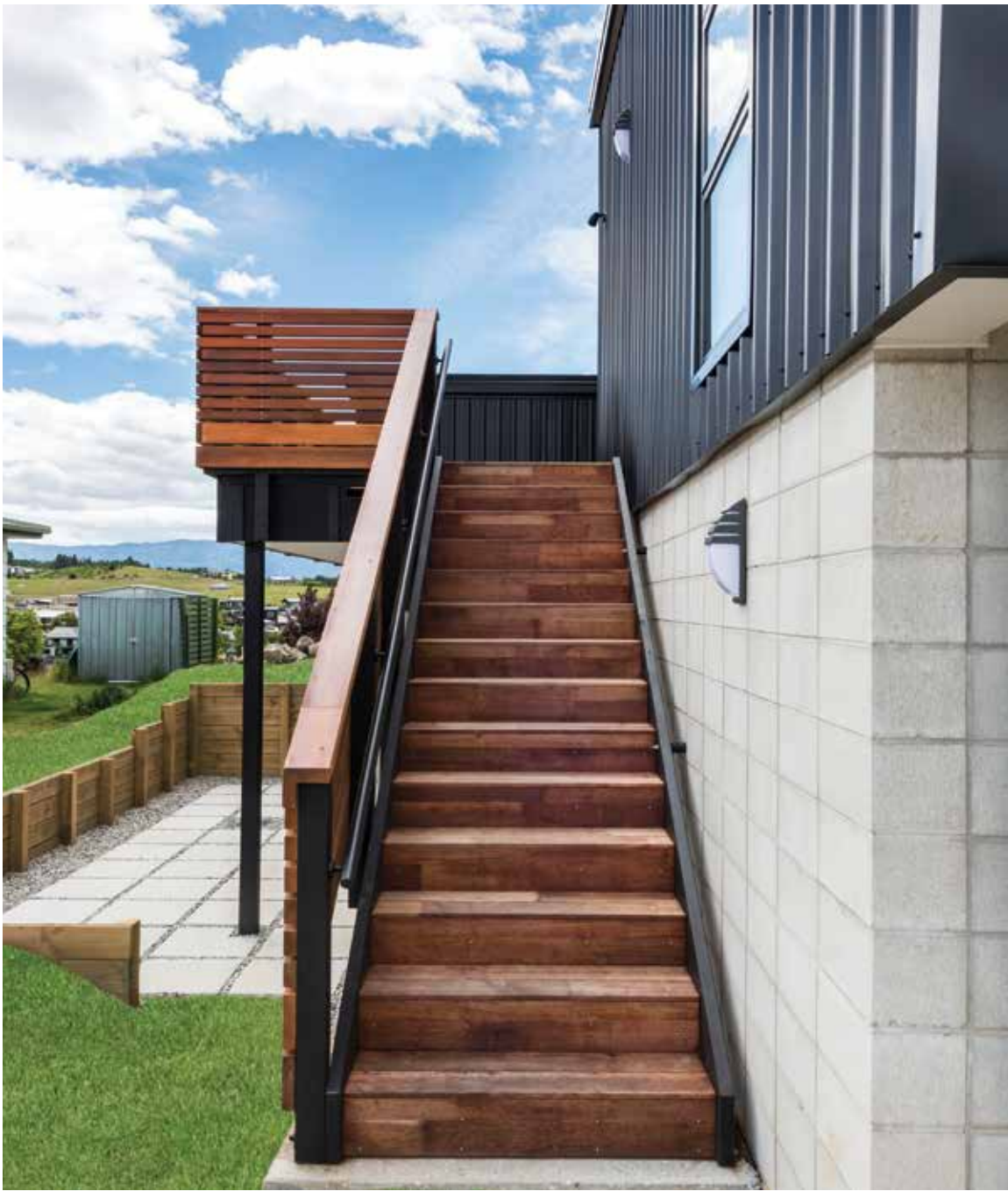
This is a superb flowing four bedroom masterpiece. The entertainer's kitchen overlooks generous dining and living areas where guests will enjoy views from sweeping windows. This home has everything your family needs to take life to a new level.



203m² | 4 bdrm

Living	159.47m ²
Garage	43.48m ²
Total	202.95m ²
Home Width	15.90m
Home Length	21.25m







Chianti

 4	 2	 2	 2	 2
---------------------------------------------------------------------------------------	---------------------------------------------------------------------------------------	---------------------------------------------------------------------------------------	---------------------------------------------------------------------------------------	---------------------------------------------------------------------------------------

Cosy, modern bungalow style

Cosy bungalow style combines with modern trends in this open plan home, which features 2.7 metre ceilings to living areas, designer kitchen with huge scullery and a fireplace option in the lounge. There's space for a computer nook beside the dining room too, and if you only need three bedrooms, a door from the entry will make bedroom four the perfect study.



212m² | 4 bdrn

Living	174.38m ²
Garage	37.64m ²
Total	212.02m²
Home Width	15.09m
Home Length	21.43m

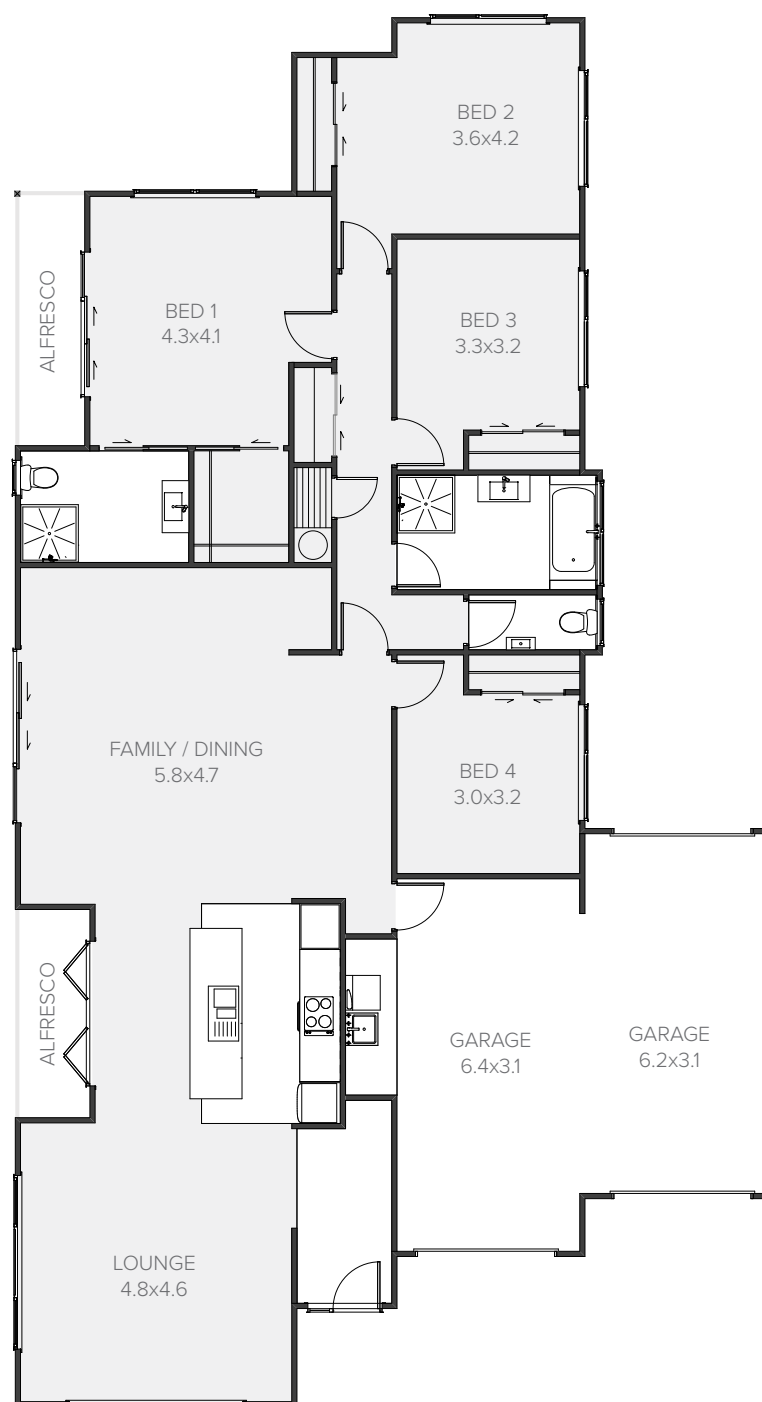


Riverside

 4	 2	 2	 2	 2
---------------------------------------------------------------------------------------	---------------------------------------------------------------------------------------	---------------------------------------------------------------------------------------	---------------------------------------------------------------------------------------	---------------------------------------------------------------------------------------

Style set in stone

A beautifully designed four bedroom home with spacious open-plan living areas that pour out onto your patio or deck. This home soaks up the sunshine for the best summer living for all the family to enjoy.



232m² | 4 bdrm

Living	177.23m ²
Garage	44.43m ²
Alfresco	9.92m ²
Total	231.58m ²
Home Width	13.10m
Home Length	24.02m



Fifeshire

4

2

2

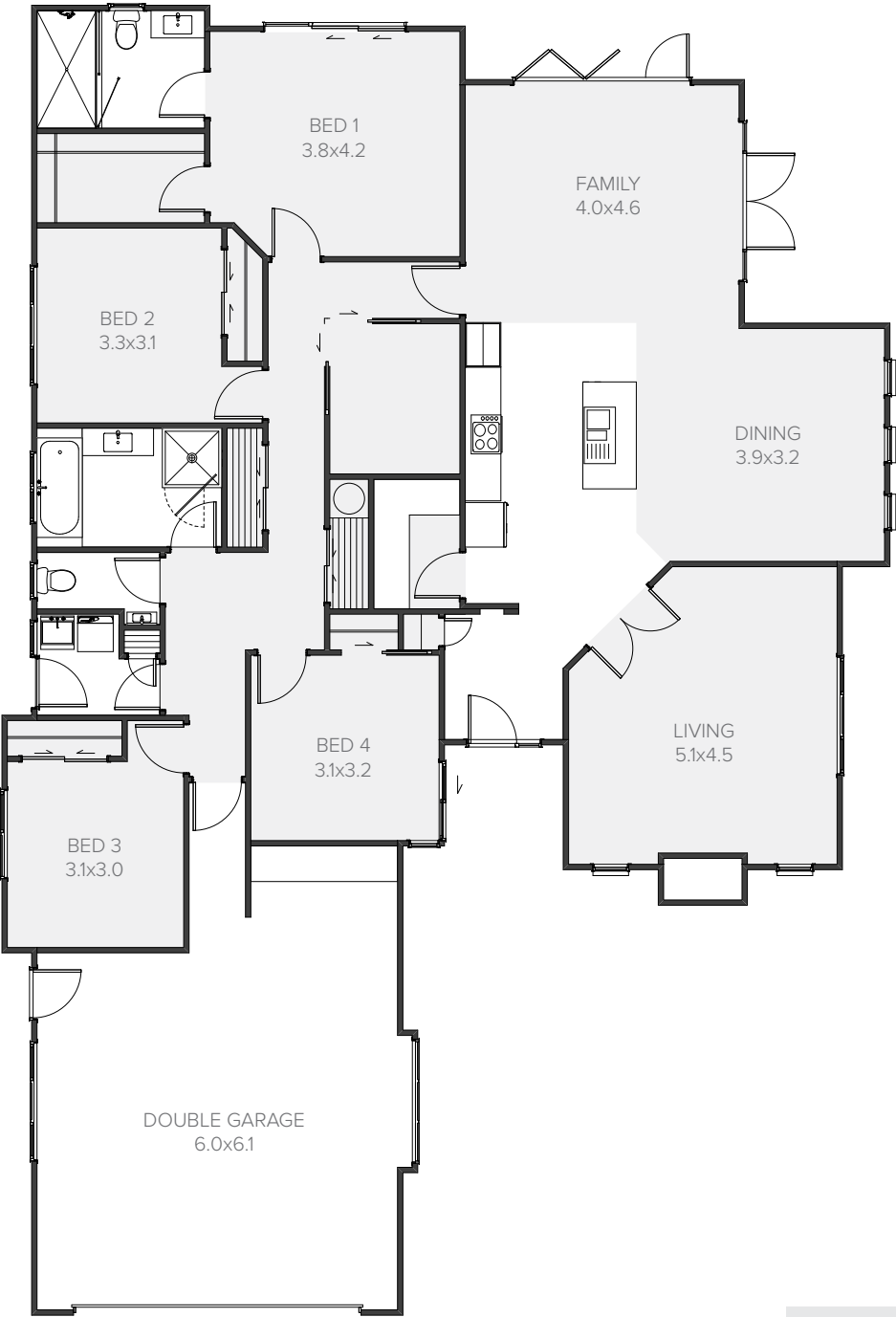
2

2

Contemporary family living

Contemporary inside and out, featuring a separate formal lounge with raking ceilings and fireplace, 2.7 metre ceilings to family living areas and trendy bi-fold doors to outside - this is family living with style. A generous scullery compliments the luxury kitchen and there's a computer room, separate laundry, plentiful storage and even a workshop nook in the garage.


232m² | 4 bdrm



Living	185.35m ²
Garage	46.22m ²
Total	231.57m ²
Home Width	14.95m
Home Length	22.05m

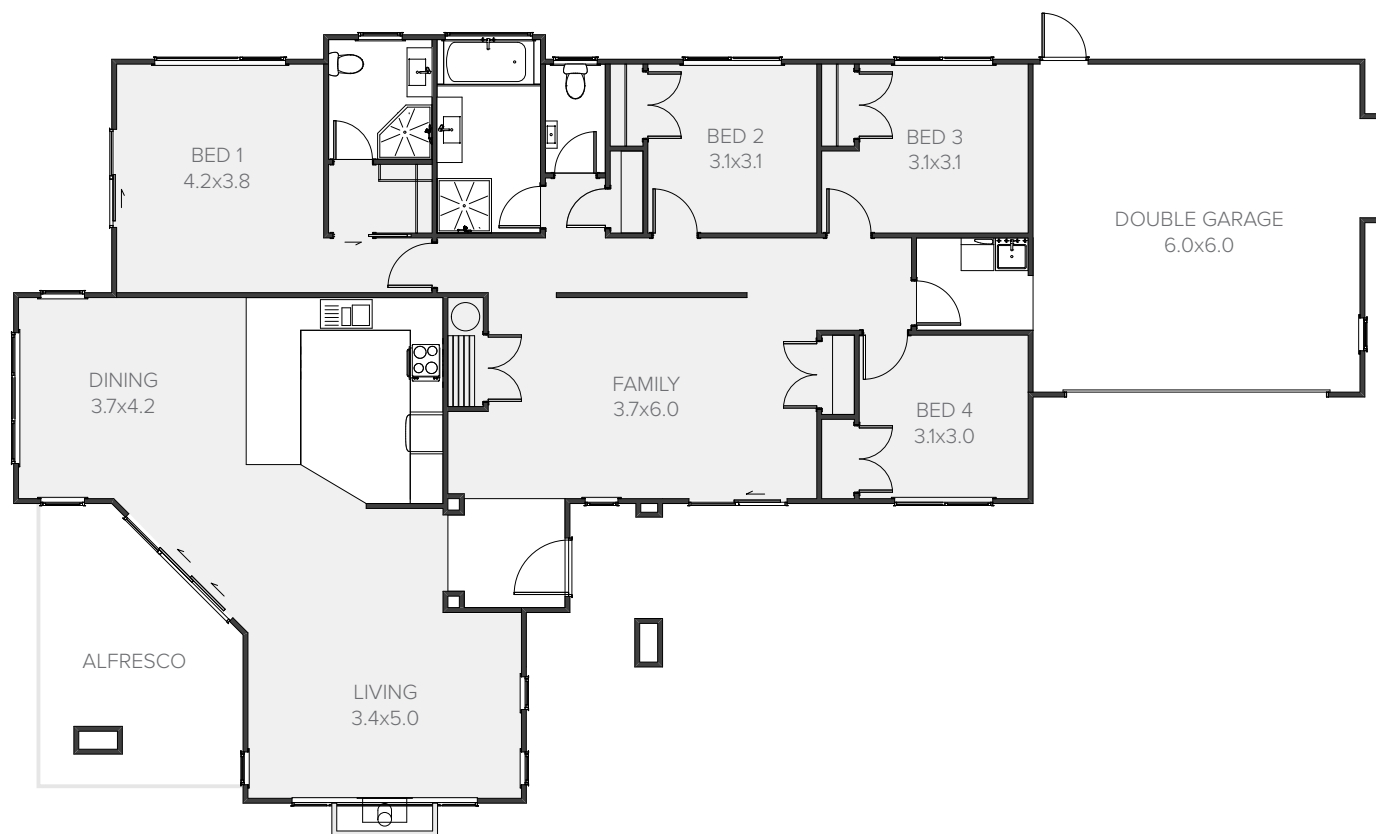


Waikaremoana

 4	 2	 2	 2	 2
---------------------------------------------------------------------------------------	---------------------------------------------------------------------------------------	---------------------------------------------------------------------------------------	---------------------------------------------------------------------------------------	---------------------------------------------------------------------------------------

Pretty and practical

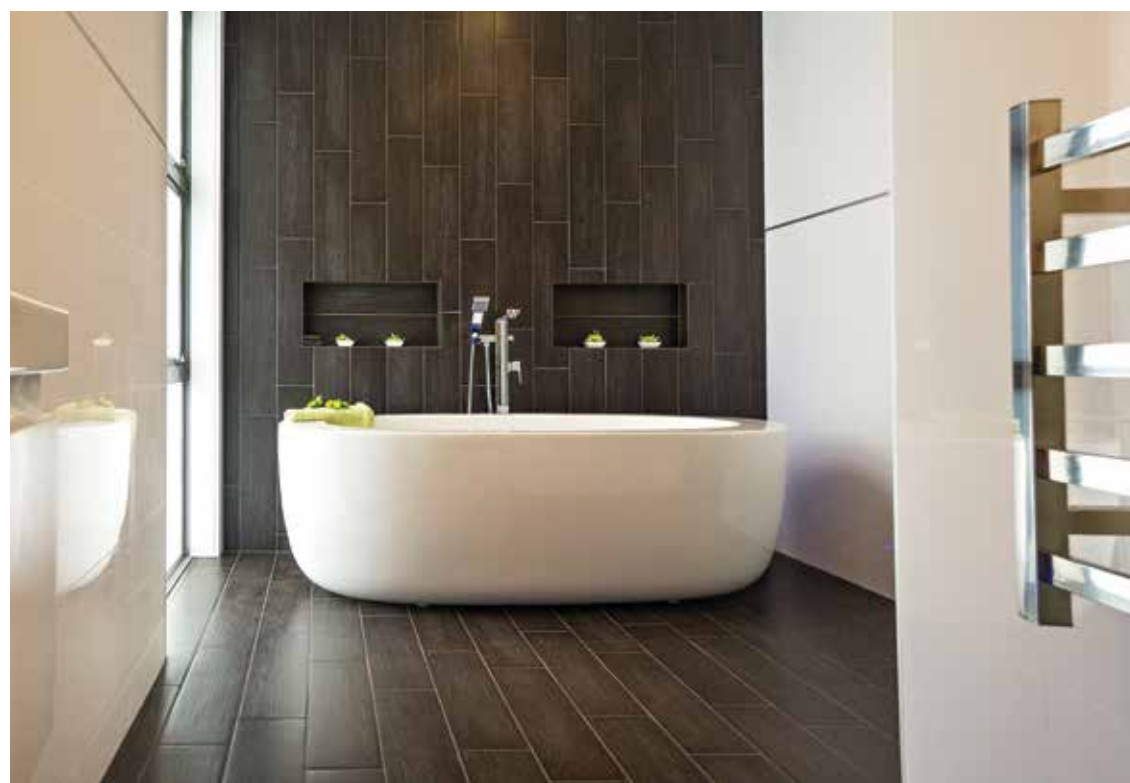
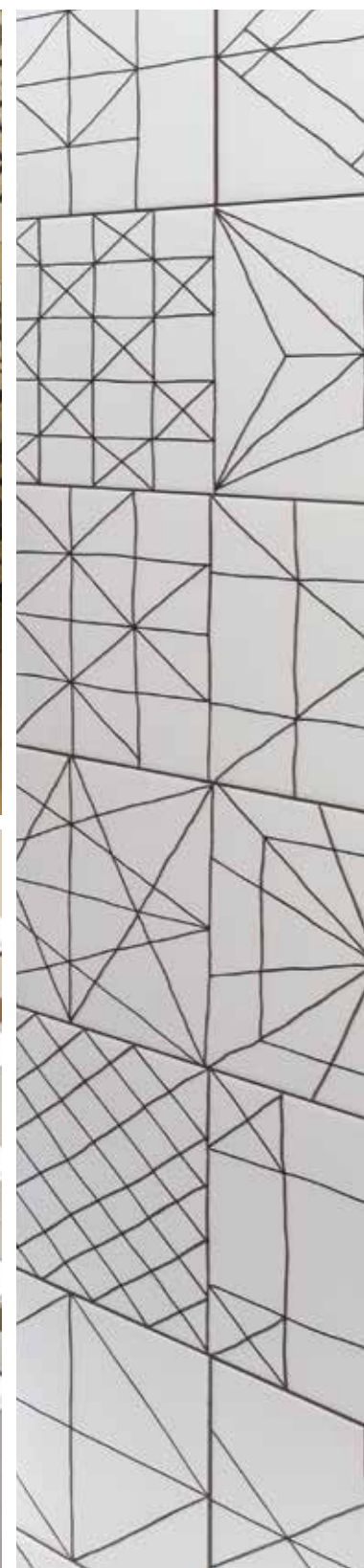
This creatively designed and spacious home comprises four double bedrooms and two living areas, providing endless space and privacy for all the family. Sliding doors lead from the living space to a dedicated patio area, perfect for family dining and entertaining.



233m² | 4 bdrm

Living	177.46m ²
Garage	42.29m ²
Alfresco	13.02m ²
Total	232.77m ²
Home Width	14.70m
Home Length	25.25m







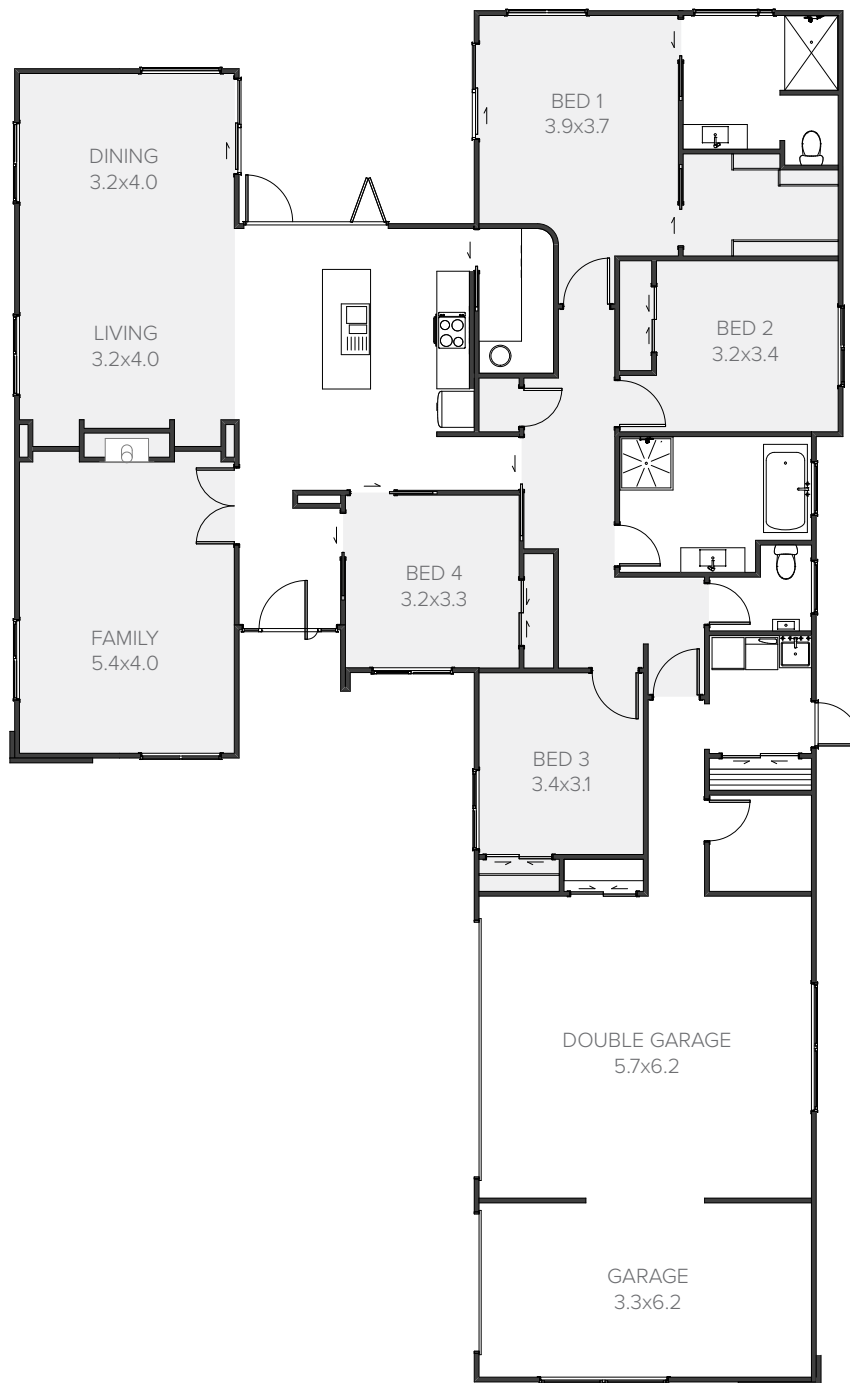
Hagart

 4	 2	 2	 2	 3
---------------------------------------------------------------------------------------	---------------------------------------------------------------------------------------	---------------------------------------------------------------------------------------	---------------------------------------------------------------------------------------	---------------------------------------------------------------------------------------

Flexibility and space

A spacious and multifaceted home, the Hagart is an ideal home design for busy families with multiple interests.

The entryway opens onto a large dining and living space with a separate family room. The entertainer's kitchen features an adjoining scullery, while a fourth bedroom is ideally positioned to double as a home office. With a separate laundry and store room, there's ample space in the triple garage for recreational vehicles or perhaps a home studio. The possibilities are endless in this home.



258m² | 4 bdrm

Living	190.98m ²
Garage	67.28m ²
Total	258.26m ²
Home Width	15.50m
Home Length	25.66m



Rossini

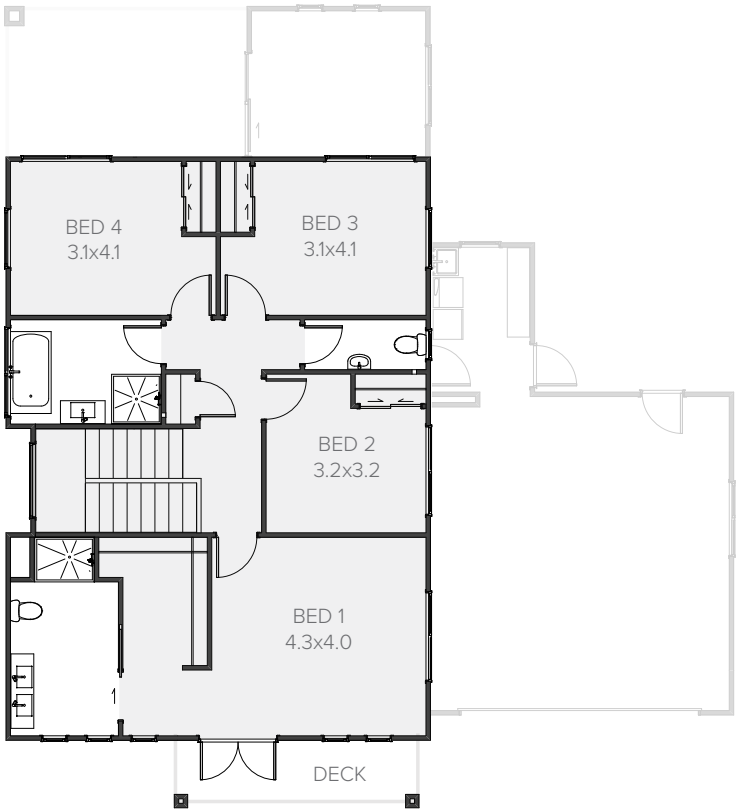
 4	 2	 2	 2	 2
---------------------------------------------------------------------------------------	---------------------------------------------------------------------------------------	---------------------------------------------------------------------------------------	---------------------------------------------------------------------------------------	---------------------------------------------------------------------------------------

Suburban hideaway

Get away from it all in this expansive and private home. Unload the groceries in the dual access scullery and enjoy the open-plan living and alfresco entertaining areas away from the street. The perfect retreat for you and your family. Upstairs, three generous sized bedrooms accompany the spacious master suite, complete with its own private balcony. Spread out and enjoy life in your own stately suburban hideaway.

269m² | 4 bdrm

FIRST FLOOR








GROUND FLOOR



Living	207.22m ²
Garage	41.26m ²
Alfresco	20.45m ²
Total	268.93m ²
Home Width	14.65m
Home Length	16.43m



Manaia

 5	 3	 2	 3	 2
---------------------------------------------------------------------------------------	---------------------------------------------------------------------------------------	---------------------------------------------------------------------------------------	---------------------------------------------------------------------------------------	---------------------------------------------------------------------------------------

A home for everyone


Space matters and this home offers plenty including ample storage. Five bedrooms or four with a study will cater for the largest family, with the master suite being positioned for maximum privacy. Outside, you'll find an impressive gable entry, and the boomerang plan shape creates a sheltered sun trap for outdoor living.



265m² | 5 bdrm

Living	216.64m ²
Garage	42.53m ²
Alfresco	6.18m ²
Total	265.35m²
Home Width	17.95m
Home Length	27.87m





Personalise a proven plan.


At Jennian Homes we invite you to personalise your home both inside and out. It's easy to customise your home with our range of style options.

A wide range of exterior claddings, rooflines and colours will make your home totally unique, even with our most popular designs.

Take a look at how different styles transform the look of these home designs.



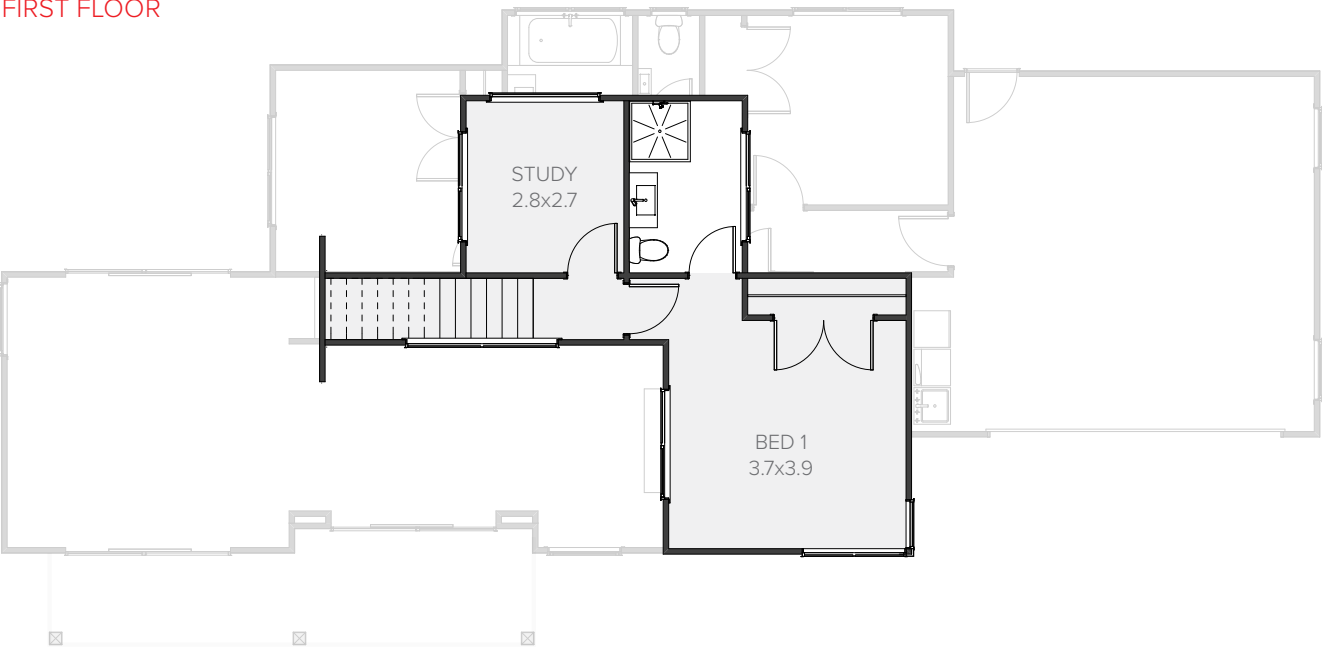
Seabreeze

 3	 1	 2	 2	 2
---------------------------------------------------------------------------------------	---------------------------------------------------------------------------------------	---------------------------------------------------------------------------------------	---------------------------------------------------------------------------------------	---------------------------------------------------------------------------------------

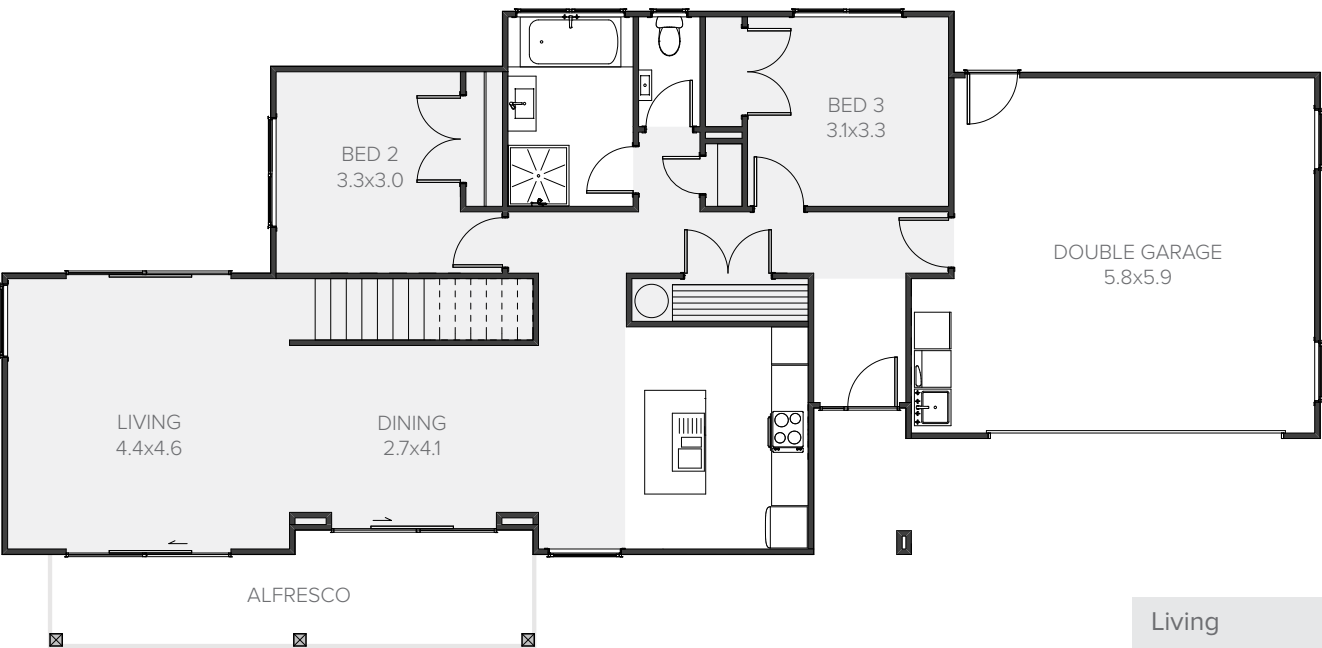
Relaxed family living

This lovely three bedroom, two bathroom home has a warm and refreshing feel. The open plan kitchen, dining and living areas flow out to an alfresco entertaining area via the lounge. There's so much room in this home, perfect for your visiting friends and family.

FIRST FLOOR



GROUND FLOOR



Living	143.78m ²
Garage	37.88m ²
Alfresco	13.43m ²
Total	195.09m ²
Home Width	8.90m
Home Length	21.60m

195m² | 3 bdrm



Brougham

 3	 2	 2	 2	 2
---------------------------------------------------------------------------------------	---------------------------------------------------------------------------------------	---------------------------------------------------------------------------------------	---------------------------------------------------------------------------------------	---------------------------------------------------------------------------------------

Sleek and stylish

The sleek designer kitchen at the heart of this home's two open-plan living spaces makes for an entertainer's paradise. Feature windows run the length of the living space, flooding the home with light and maximising views. An adjoining wing houses three generous bedrooms and quiet space ideal for study. From the street, a striking combination of colours and claddings makes this home stand out from the rest. A stylish and modern family home.




217m² | 3 bdrn



Living	164.58m ²
Garage	40.06m ²
Alfresco	12.38m ²
Total	217.02m ²
Home Width	14.20m
Home Length	20.78m



Altera

 4	 2	 2	 2	 2
---------------------------------------------------------------------------------------	---------------------------------------------------------------------------------------	---------------------------------------------------------------------------------------	---------------------------------------------------------------------------------------	---------------------------------------------------------------------------------------

Room to spread out

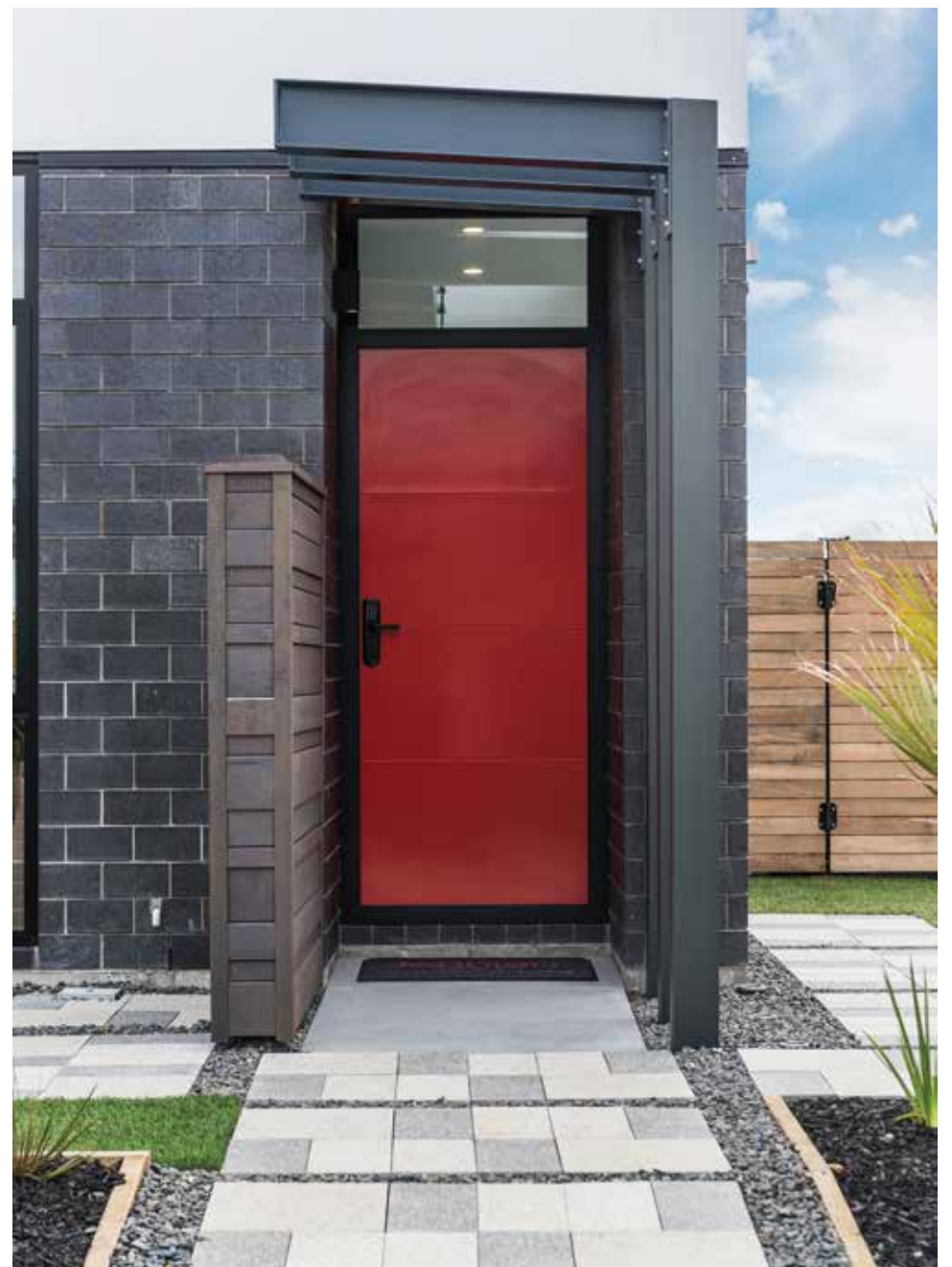
An inspirational four bedroom home with separate formal lounge and spacious family kitchen area, linked to a huge alfresco through sliding doors. Add a dining space next to the kitchen and you'll have everything your family needs in this home.



230m² | 4 bdrm






Living	173.33m ²
Garage	38.99m ²
Alfresco	17.28m ²
Total	229.60m ²
Home Width	14.20m
Home Length	23.20m







Uptown

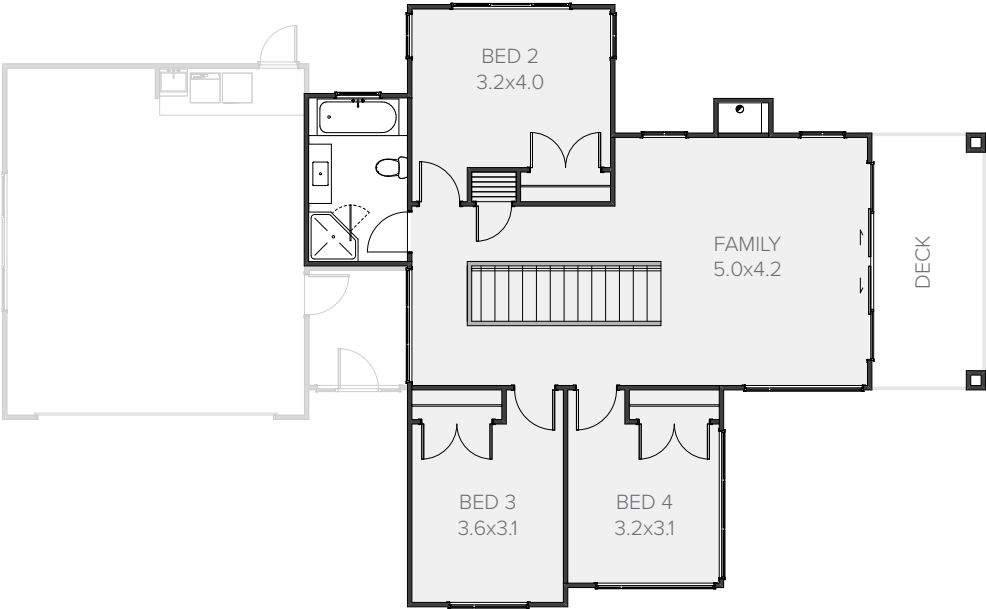
 4	 2	 2	 3	 2
---------------------------------------------------------------------------------------	---------------------------------------------------------------------------------------	---------------------------------------------------------------------------------------	---------------------------------------------------------------------------------------	---------------------------------------------------------------------------------------

Pure wow factor

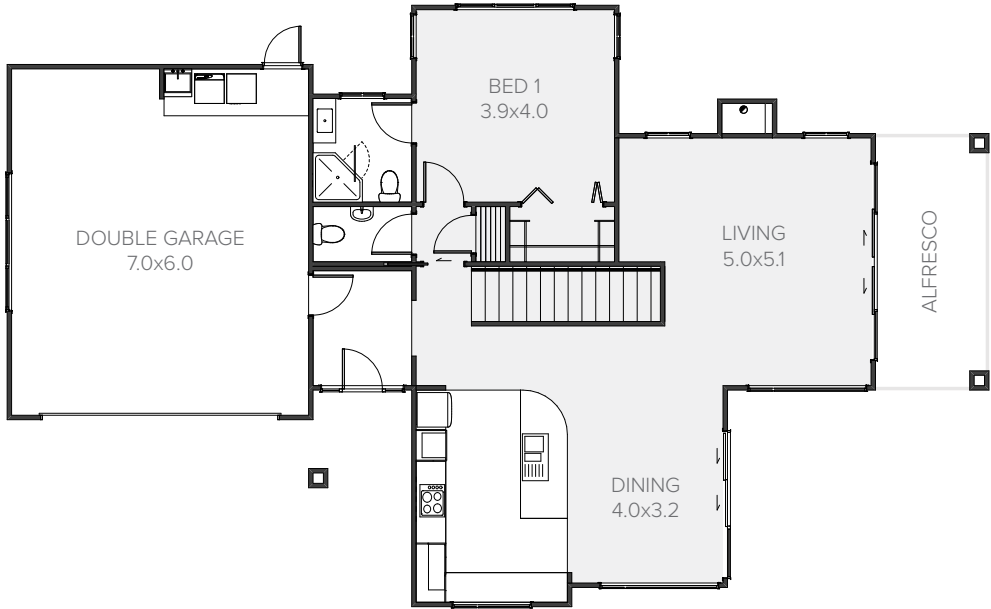
Uptown and upbeat - this two storey mono-pitch weatherboard home with feature cladding to columns has pure wow factor. Extensive use of full height glazing floods interior space with light, and creates a jewel box effect at night. The ground floor features family living spaces and the master suite. Upstairs, three bedrooms and a spacious family room with large covered deck offer the perfect teenage retreat.

256m² | 4 bdrm

FIRST FLOOR








GROUND FLOOR



Living	188.07m ²
Garage	44.10m ²
Alfresco	23.92m ²
Total	256.09m ²
Home Width	12.19m
Home Length	19.90m



Monaco

 4	 3	 2	 2	 3
---------------------------------------------------------------------------------------	---------------------------------------------------------------------------------------	---------------------------------------------------------------------------------------	---------------------------------------------------------------------------------------	---------------------------------------------------------------------------------------

Focus on living

Welcome to a home that's big on features, starting with the generous three-car garage. From the spacious entry you can access the formal lounge with a feature fireplace or find yourself in the huge open plan family and dining area with central kitchen. Your home theatre requirements are well catered for in the separate media space and the fourth bedroom is ideally located to become your private study.



268m² | 4 bdrm

Living	203.61m ²
Garage	64.15m ²
Total	267.76m ²
Home Width	14.45m
Home Length	28.60m







Lockheed

Townhouse



4



1



2



3

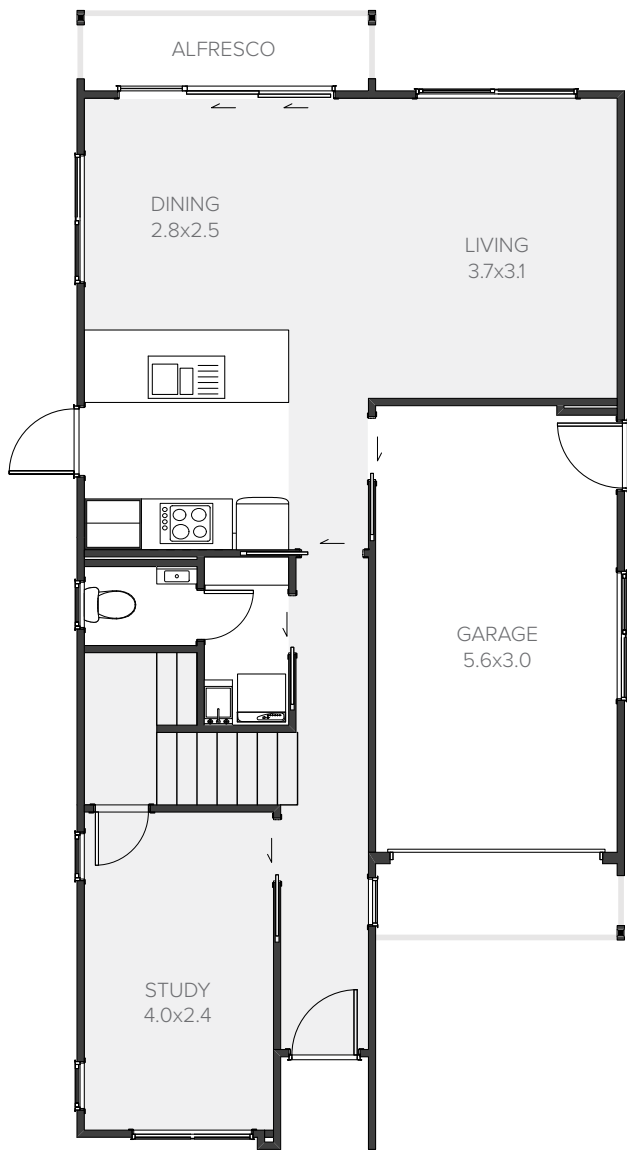


1

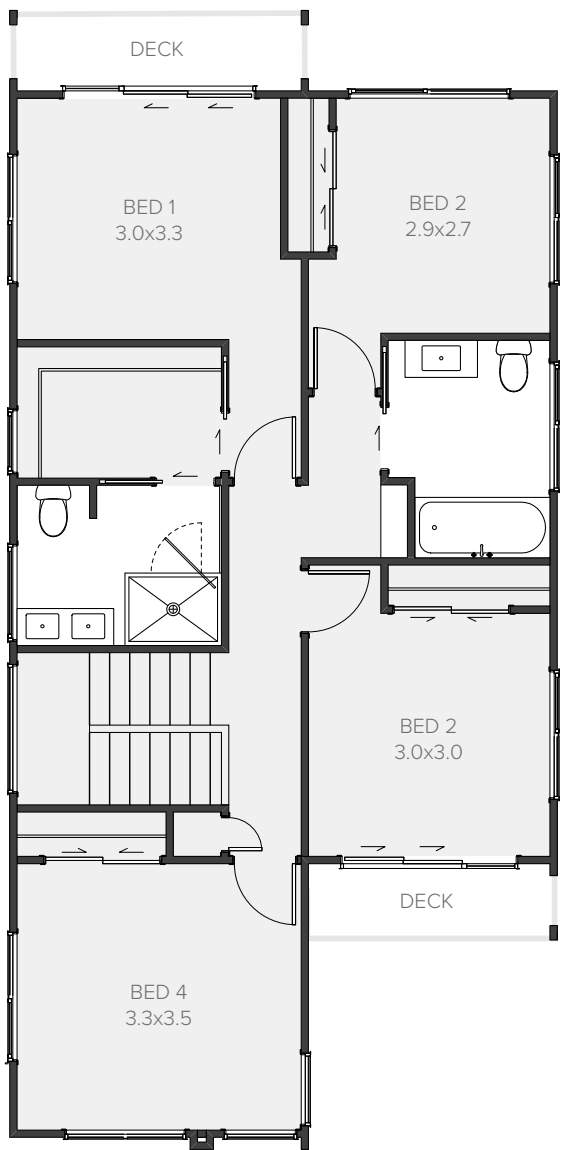
Street smart

Practical living with affordable luxuries, the Lockheed is a double storey, four-bedroom plus study, showpiece of intelligent home design. Migrate upstairs to the masterful retreat and find a haven for every member of the family. Suitable for narrow blocks this home is just what you are looking for.

GROUND FLOOR



FIRST FLOOR



160m² | 4 bdrm

Living	132.63m ²
Garage	17.60m ²
Alfresco	10.30m ²
Total	160.53m ²
Home Width	6.80m
Home Length	14.15m



Lockheed

Duplex

 4	 1	 2	 3	 2
---------------------------------------------------------------------------------------	---------------------------------------------------------------------------------------	---------------------------------------------------------------------------------------	---------------------------------------------------------------------------------------	---------------------------------------------------------------------------------------

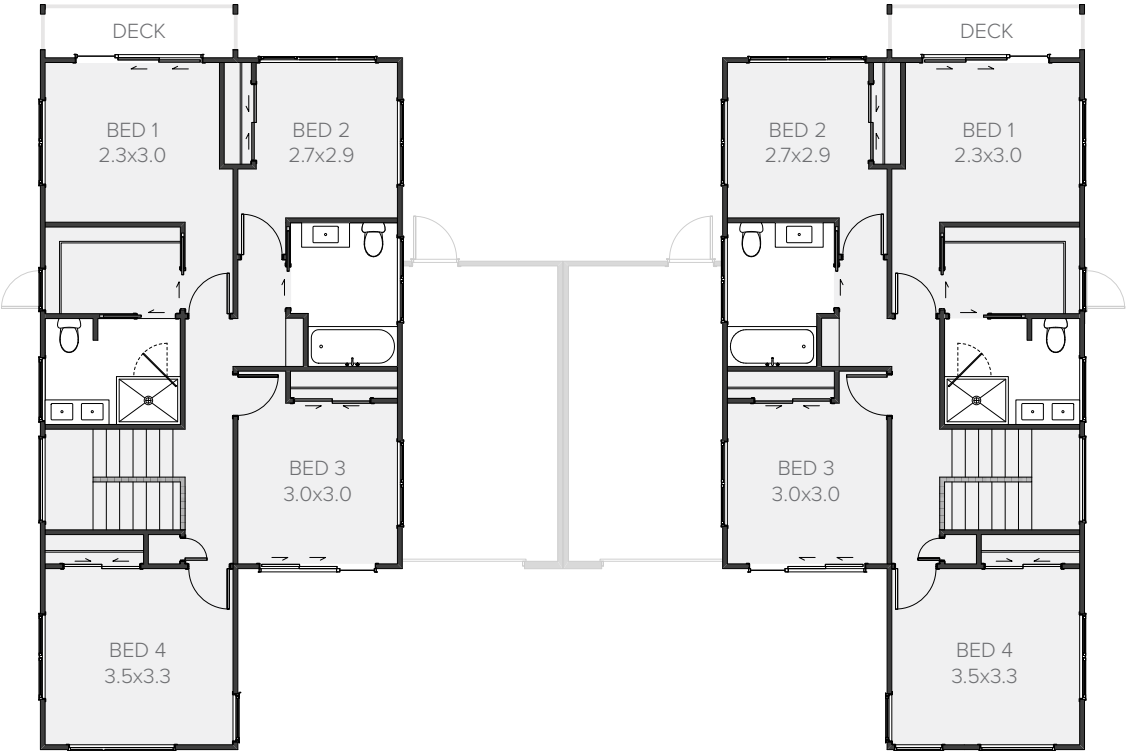
*Per Dwelling

Double vision

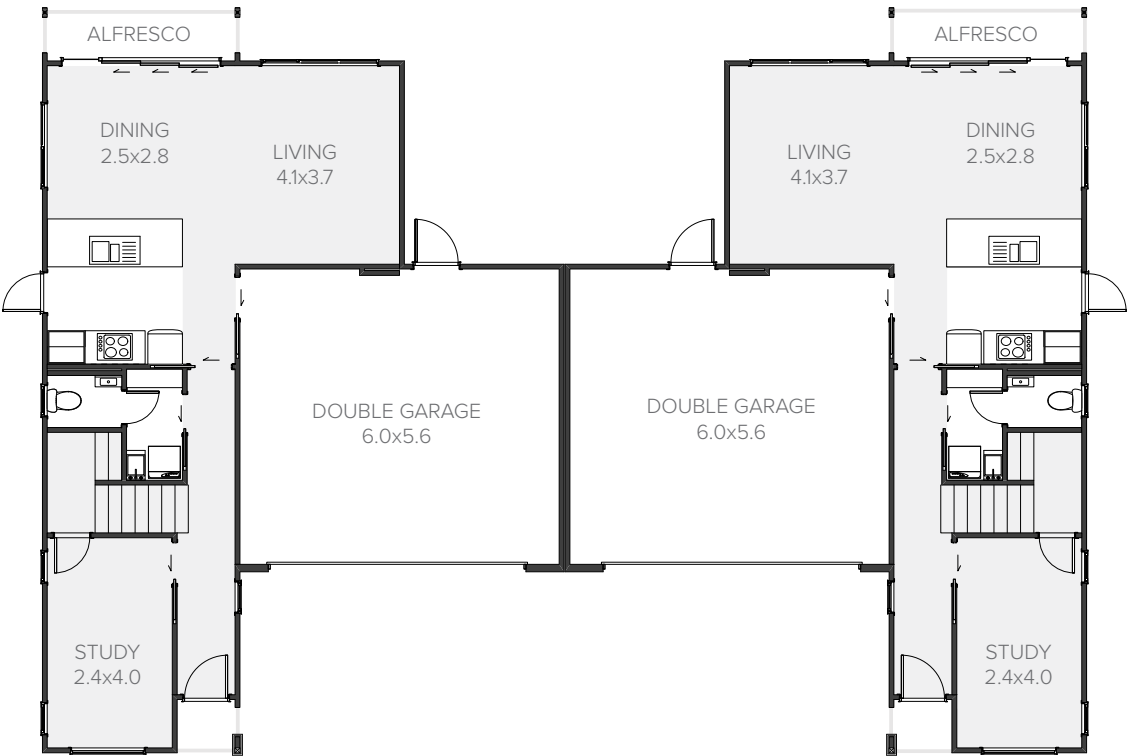
Designed to accommodate everyone’s need for both privacy and family time. From a welcoming entranceway, it retains a practical feel with a study at the front of the home. The kitchen, living and dining areas are well integrated at the rear to capture light and create an easy indoor-outdoor feel.

175m² | 4 bdrm

FIRST FLOOR



GROUND FLOOR



Per Dwelling

Living	132.33m ²
Garage	34.92m ²
Alfresco	7.30m ²
Total	174.55m ²
Home Width	9.80m
Home Length	14.00m



Lockheed

Terrace

 4	 1	 2	 3	 1
---------------------------------------------------------------------------------------	---------------------------------------------------------------------------------------	---------------------------------------------------------------------------------------	---------------------------------------------------------------------------------------	---------------------------------------------------------------------------------------

*Per Dwelling

Triple treat

These terraced homes offer functional family living and laid back relaxation. Soundproofing keeps the peace between neighbours. Each dwelling offers four bedrooms, study, two bathrooms and open-plan living. Maximise the potential of your section today.

FIRST FLOOR



160m² | 4 bdrm

GROUND FLOOR



Per Dwelling

Living	132.63m ²
Garage	17.60m ²
Alfresco	10.30m ²
Total	160.53m²
Home Width	6.80m
Home Length	14.00m





studio J

Studio J is our comprehensive state of the art home selection centre. View our extensive range of colour options, window treatments, flooring, bathroom fittings, doors, kitchen appliances, bench-tops and more. Our experienced New Home Consultants will guide you through the selection process.



Build a better future for your family.

A Future-Proof home is a home that is better to live in today and will be worth more in the future. Jennian Homes is a pioneer in the building industry's efforts to deliver homes that are safer, warmer, healthier and more energy efficient.

We'll collaborate with you to find the solutions that work best for you and your family, improving your home's comfort and value for many years to come.



Future-Proofing your home for energy efficiency makes good financial sense. It will reduce both your carbon footprint and your energy bills.

Choosing the right insulation, heating solutions, lighting, and appliances will make your home warmer and more comfortable to live in.



Smart home security and automation help Future-Proof your home and improve your quality of life. From state-of-the-art entertainment throughout your home to remote garage door openers to fully integrated, centrally controlled computer systems, there is an FPB solution for all homes.



Changes to your plumbing, heating, lighting and even the design of your home can reduce the risk of illness, accidents or injury.

Features like mechanically-filtered ventilation systems, central vacuums and non-slip decking help to ensure the health and safety of your family.



From traffic to home entertainment systems, noise pollution is a common problem in homes. For your home to maintain its long-term value, regardless of what is built nearby or who moves in next door, you need to plan carefully.

Future-Proof your home against noise pollution with intelligent building design and purpose-designed materials like laminated windows and sound insulation products.



As one of your biggest investments, your home should look and perform just as well in 10 years as it does today. Life Cycle Costing means evaluating what a product or service costs over its lifetime: cheaper things may end up costing you dearly over the long term.

Talk to us about the materials that will deliver the best long-term value.



The cost of energy is increasing every year. Kiwis are becoming more aware of the need to get more value from energy we consume, waste less, and use renewable energy wherever possible.

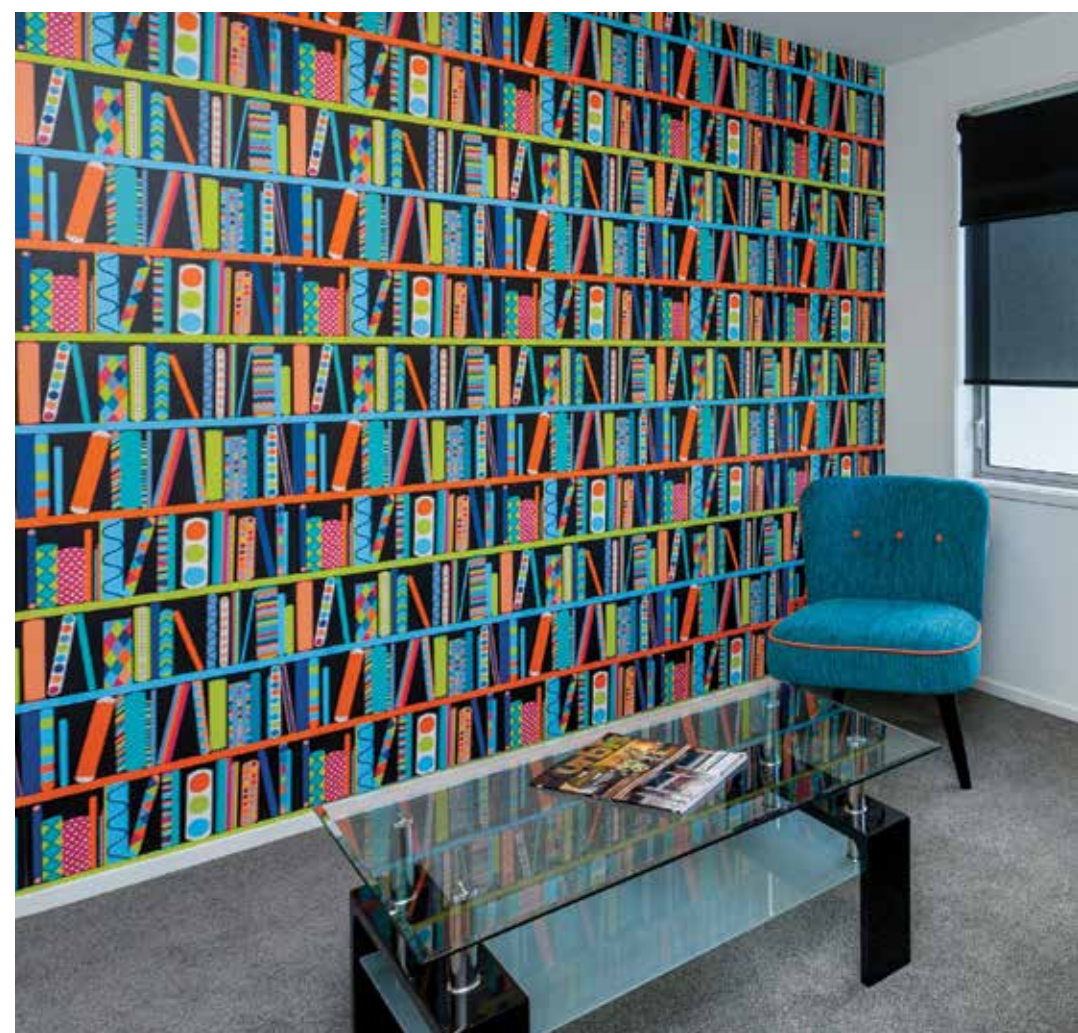
A key goal of Future-Proof Building is to minimise our impact on the earth. When building your home, choose eco-friendly products and renewable resources whenever possible to reduce your carbon footprint and protect the planet for future generations.



Future-Proofed homes are built from quality materials, correctly installed by professionals. Products and materials used for key components of the home should meet NZ Standards, carry BRANZ appraisals, or International Organisation for Standardization (ISO) standards where applicable.



Future-Proof your home for a growing or ageing family by building rooms that can be divided into smaller areas or used in multiple ways. Allow for plenty of storage – consider installing shelving and organizer systems in wardrobes, the laundry, or even in the roof cavity.



New Home Builders' Info Session.

Building a new home is an exciting adventure and Jennian Homes has been building the homes New Zealanders want for more than 35 years.

Come and learn from the experts about the hidden costs of building and how to avoid surprises by designing a home, customised for you, to work within your true budget.

Our regular building information sessions arm you with lots of great information to help you on your journey to building your own home.

- Establishing your construction budget and how to avoid hidden costs.
- The impact of designing your home in an environmentally friendly way, to save you money.
- Planning the home you've always wanted.
- Residential construction industry knowledge and advice.

For more information on the New Home Builders' Information Session visit **jennianinfo.com**



Major Sponsor
Heart Foundation
Lottery



Celebrating 50 homes built together

Thank you to our major
Lottery sponsor

Jennian
HOMES

Your personality Our expertise







Connect
with us.



Online

Like to see more of Jennian?
Visit jennian.co.nz for all the
latest in home, interior design
and exclusive offers.



Display

We have Display Homes
located all over the country.
See the full list of locations
at jennian.co.nz



Social

Connect with us on Social
Media for all the latest news,
updates and offers.



Your personality
our expertise.

Jennian
HOMES