

Jennian

Inspiration

Award-Winning
Design.
Unmatched
Craftmanship.

Northland
Collection



Meet the Northland team...

We are a team of expert home builders located in Whangarei, where we are fortunate to enjoy a temperate climate, breathtaking beaches and excellent recreational facilities, as well as a rapidly evolving urban landscape.

We understand the importance of **skilled home builders who approach their work with true craftsmanship**. That's why we construct homes as if they were our own, using only high-quality materials and ensuring they are built to last.

This collection of plans have all been locally designed and built for Northland families.

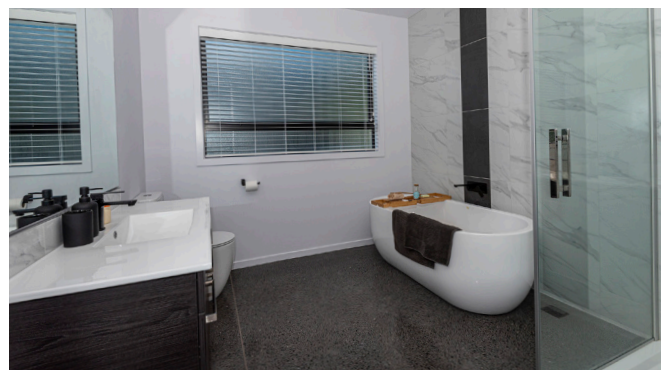
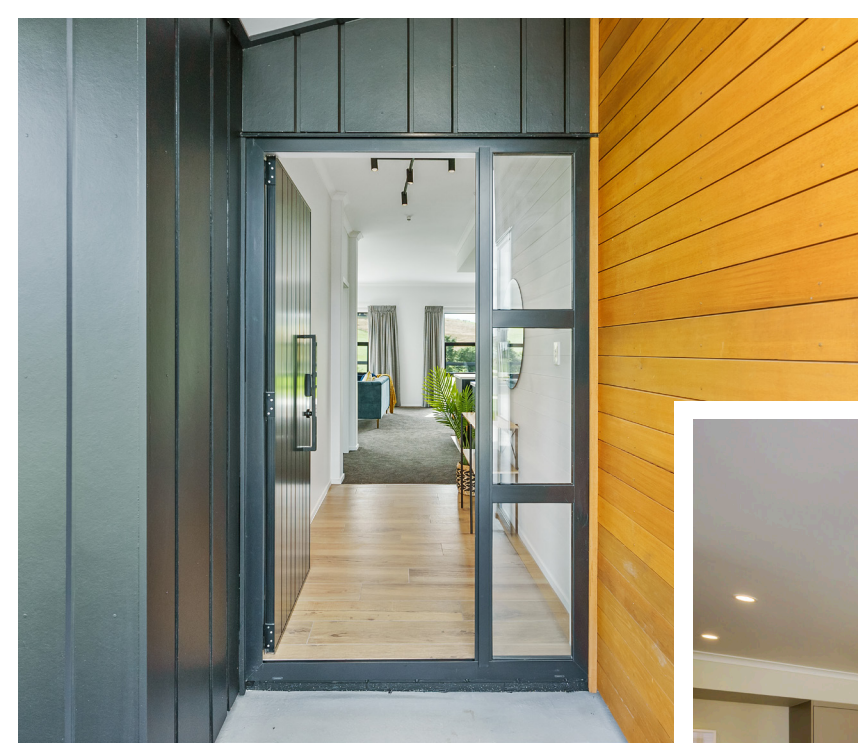
We invite you to explore some of our most loved plans, get to know our team, and when you're ready, contact us to begin planning your dream home.

We can't wait to hear from you...

Jennian

Inspiration










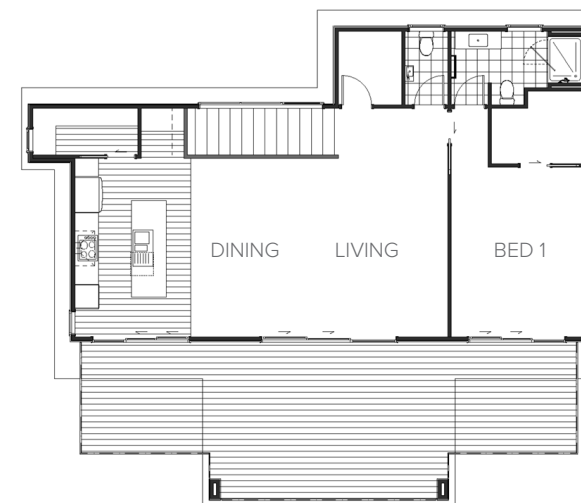
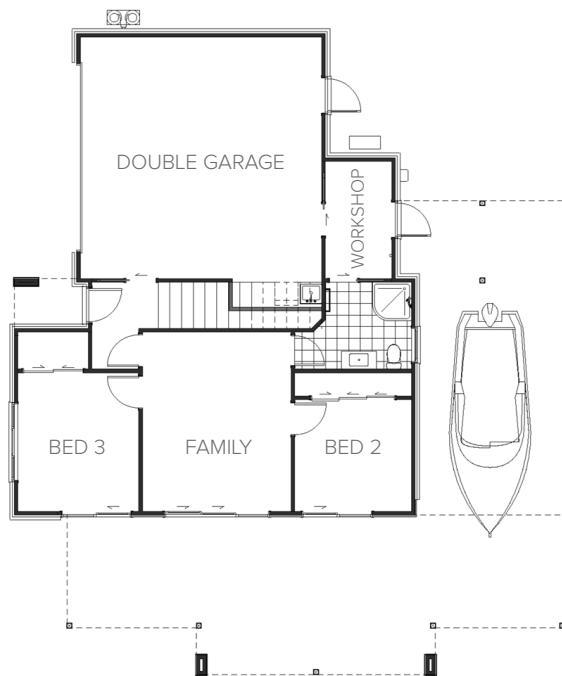


Awahoa Bay

This two-storey, 197m² plan features stunning rooflines and creative cladding. Designed to capture Northland's spectacular vistas from the substantial deck, the master bedroom occupies the upstairs level, while two bedrooms and a living area downstairs will keep the kids happy.

KEY FEATURES

-  3 BEDROOMS
-  2 LIVING
-  2 BATHROOMS
-  3 TOILETS
-  2 GARAGE



Living	156.05m ²
Garage	41.24m ²
Total	197m²
Home Width	14.41m
Home Length	16.63m






Jennian
Inspiration

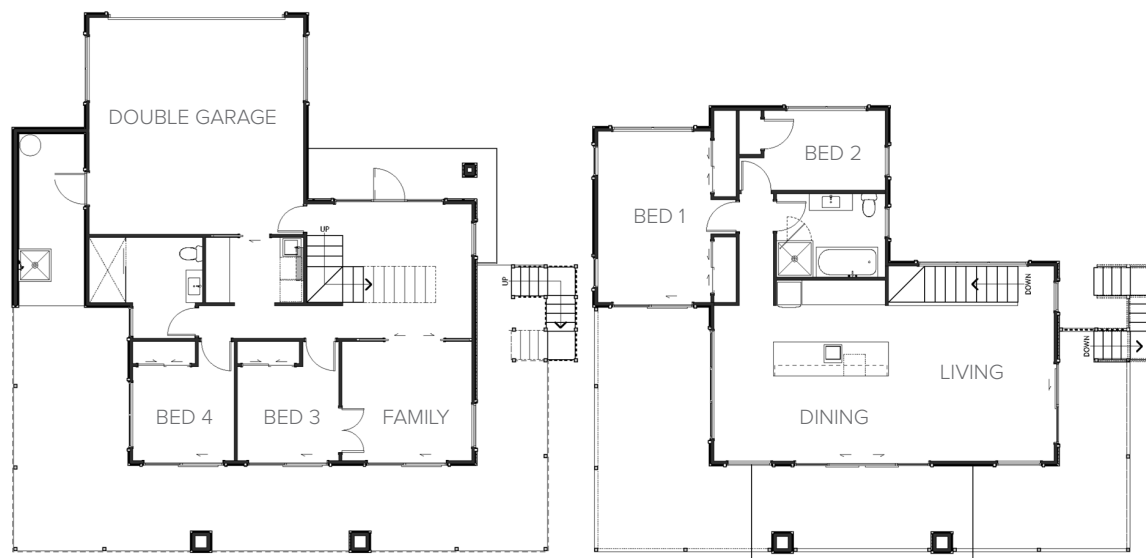


Taurikura Bay

A true two-storey family home, with expansive decks. The upper level caters to open-plan living, with a master suite and office, while the lower level has two additional bedrooms and a generously sized family room. The entry and stairwell create a striking feature in this beautiful, classic design.

KEY FEATURES

-  4 BEDROOMS
-  2 LIVING
-  2 BATHROOMS
-  2 TOILETS
-  2 GARAGE



Living	167.36m ²
Garage	37.76m ²
Total	263.63m²
Home Width	14.70m
Home Length	15.4m
Decking	58.57m ²







Jennian
Inspiration

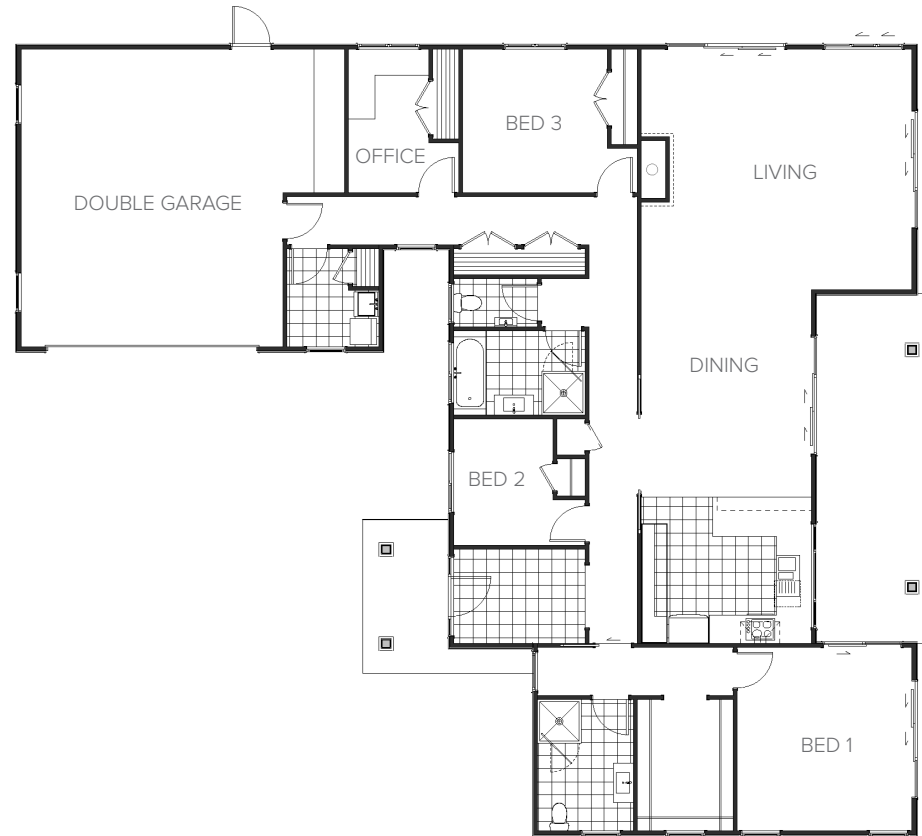


Reotahi Bay

You will instantly feel at home with this 232m² plan. Generous high ceilings, a welcoming formal entryway, and an abundance of storage combine to create a modern, spacious design that makes everyday living effortless and enjoyable.

KEY FEATURES

-  3 BEDROOMS
-  1 OFFICE
-  1 LIVING
-  2 BATHROOMS
-  2 TOILETS
-  2 GARAGE



Living	184.57m ²
Garage	47.40m ²
Total	231.97m²
Home Width	18.08m
Home Length	20.58m

232m² | 3 bdr






Jennian
Inspiration

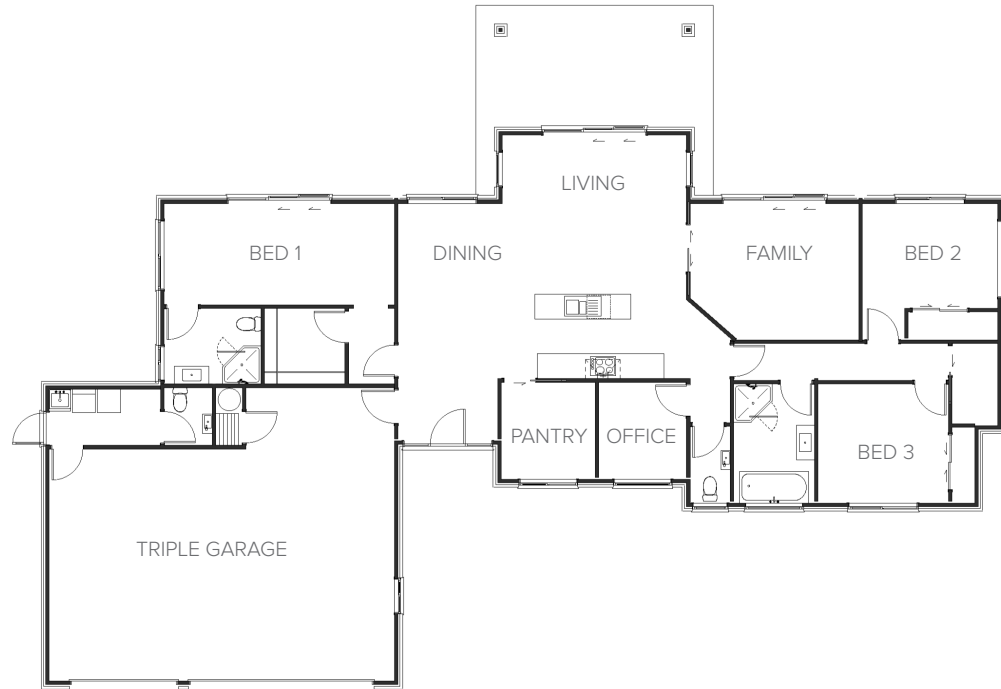


Te Waite Bay

At 235m², this home is designed for effortless country living. Ideal for a farm or lifestyle block, it offers expansive garaging with room for freezers, a central office, and a generous walk-in pantry — everything you need to make rural life comfortable and convenient.

KEY FEATURES

-  3 BEDROOMS
-  2 LIVING
-  2 BATHROOMS
-  3 TOILETS
-  3 GARAGE



Living	172.42m ²
Garage	62.85m ²
Total	235.27m²
Home Width	17.5m
Home Length	24.9m

235m² | 3 bdr







Jennian
Inspiration

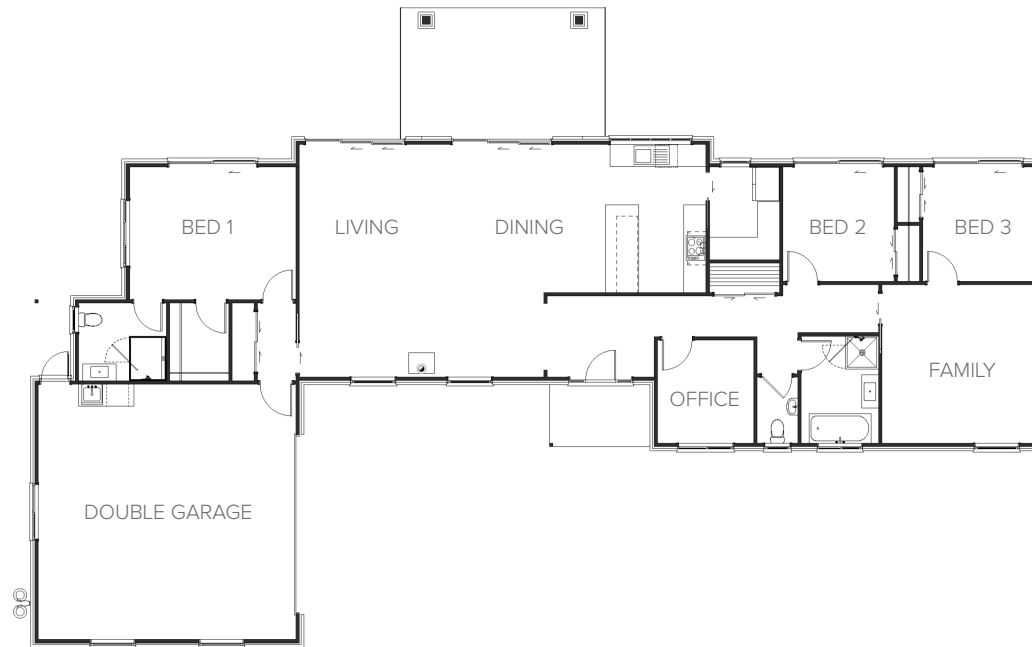


Otamure Bay

A long sleek design, perfect for taking in expansive Northland views, rural or coastal, this plan suits land with contour, while the access from behind leaves all the main rooms to take in the views. A classic design with master one end, separated from the family space by a large open plan living area, this design can be adapted to many sites.

KEY FEATURES

-  3 BEDROOMS
-  1 OFFICE
-  2 LIVING
-  2 BATHROOMS
-  2 TOILETS
-  2 GARAGE



Living	183.79m ²
Garage	50.15m ²
Total	233.94m²
Home Width	16.90m
Home Length	27m

234m² | 3 bdr






Jennian
Inspiration



Taiharuru Bay

This striking 220m² plan is perfect for country living. Generous living areas give the family plenty of space to spread out, while the outdoor portico sets the scene for summer barbecues and relaxed family fun.

KEY FEATURES

-  4 BEDROOMS
-  2 LIVING
-  2 BATHROOMS
-  2 TOILETS
-  2 GARAGE



Living	179.7m ²
Garage	40.92m ²
Total	220m²
Home Width	21.91m
Home Length	22.74m

220m² | 4 bdr






Jennian
Inspiration

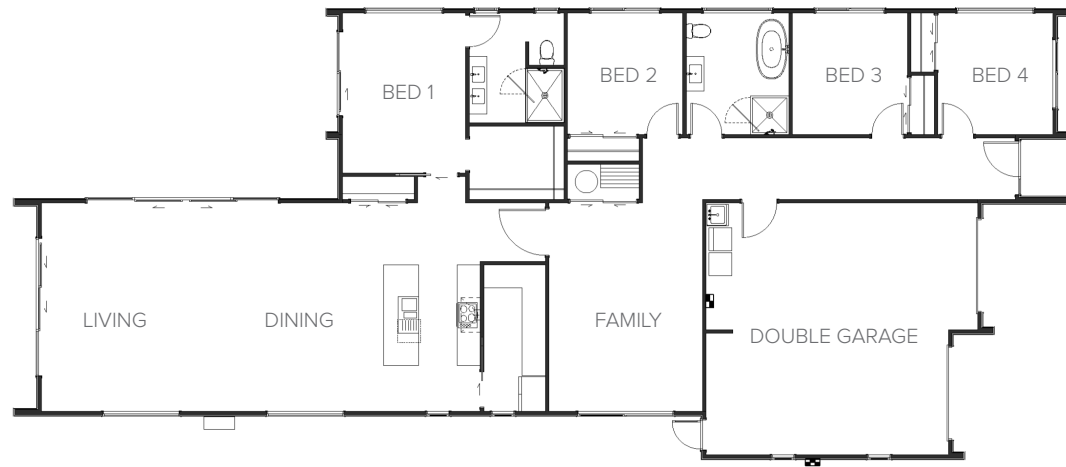


Ngawai Bay

At 239m², this plan is designed to impress. A grand entryway and high ceilings set the tone for a home that is all about enjoyment, while clean lines and modern materials make it a true showstopper — whether on a rural block or a town site.

KEY FEATURES

-  4 BEDROOMS
-  2 LIVING
-  2 BATHROOMS
-  2 TOILETS
-  2 GARAGE



Living	191.77m ²
Garage	46.47m ²
Total	238.2m²
Home Width	11.67m
Home Length	27.40m

238m² | 4 bdr






Jennian
Inspiration



Mohei Bay

At 203m², this family-focused design makes the most of surrounding views. With ample storage and well-planned covered outdoor areas, it's a home created for relaxed, easy living.

KEY FEATURES

-  3 BEDROOMS
-  2 LIVING
-  2 BATHROOMS
-  2 TOILETS
-  2 CARPORT



Living	169.78m ²
Garage	33.32m ²
Total	203.08m²
Home Width	17.8m
Home Length	25.42m

203m² | 3 bdrm






Jennian
Inspiration

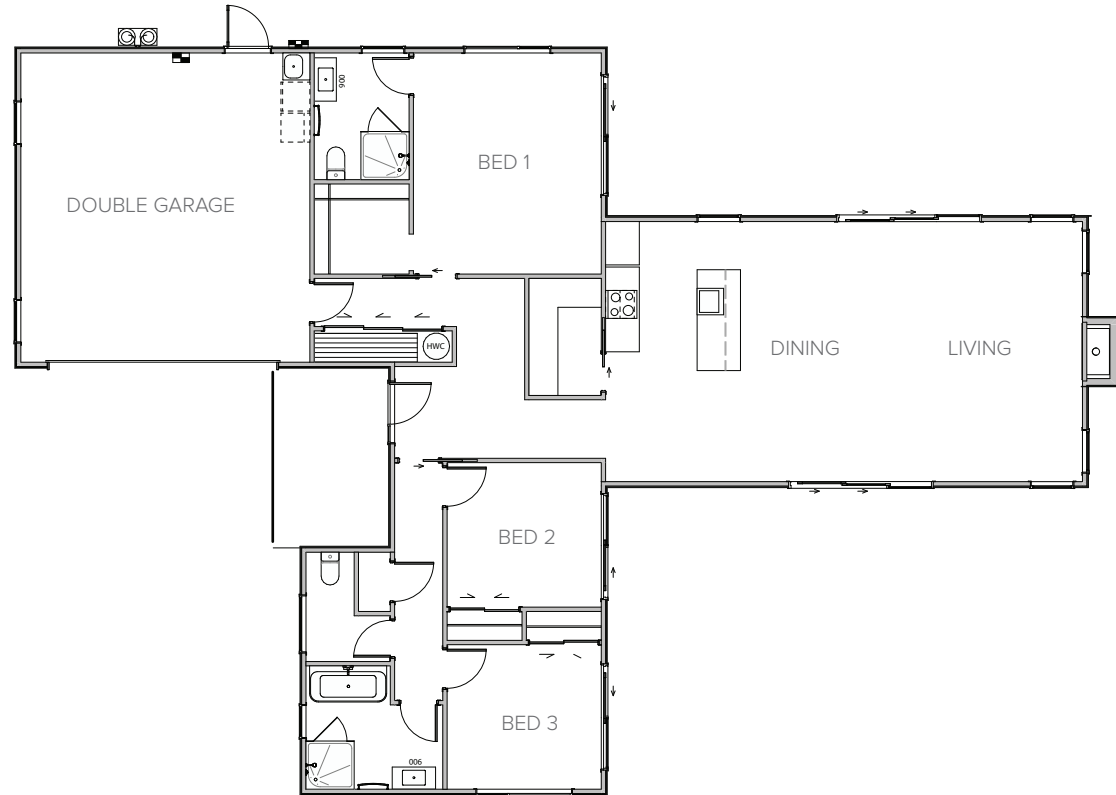


Ohawini Bay

At 186m², classic gables and a feature chimney give this home timeless appeal. The central living pavilion showcases floor-to-ceiling glass opening onto outdoor areas, while the covered entryway adds both style and practicality.

KEY FEATURES

-  3 BEDROOMS
-  1 LIVING
-  2 BATHROOMS
-  2 TOILETS
-  2 GARAGE



Living	146.7m ²
Garage	39.6m ²
Total	186.3m²
Home Width	15.47m
Home Length	22.84m

186m² | 3 bdr







Jennian
Inspiration

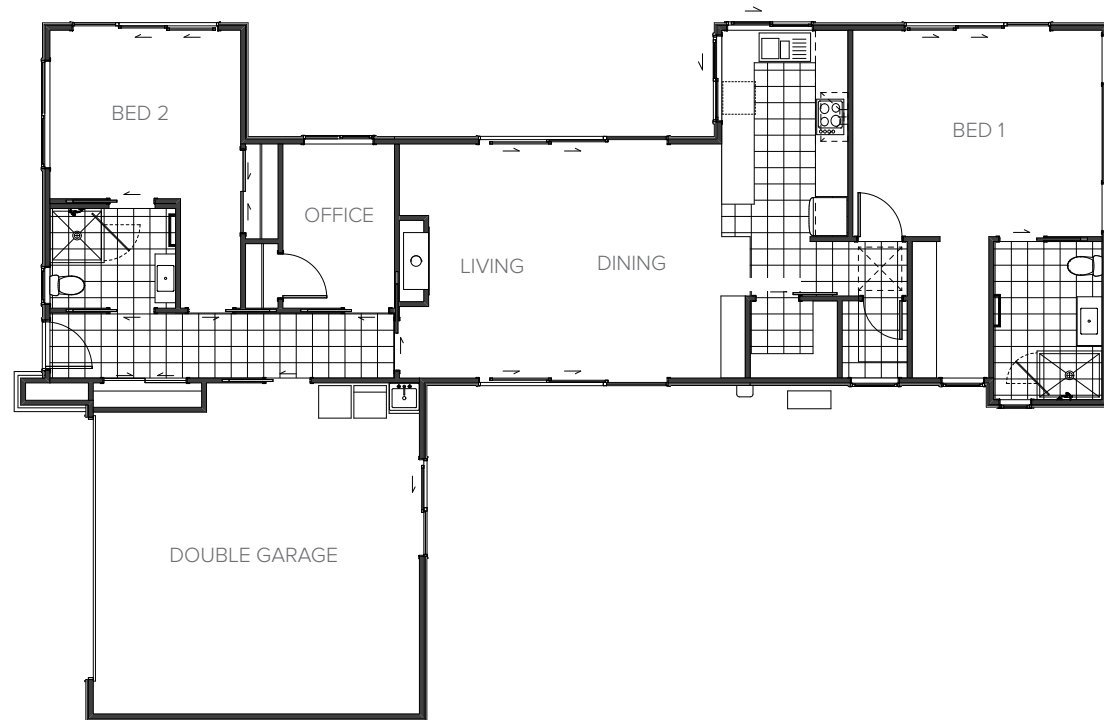


Tepipi Bay

With its simple layout, this 151m² home makes downsizing easy. There's space for an office or craft room, while two bedrooms both enjoy ensuite access. Clean rooflines and generous decks complete the package.

KEY FEATURES

-  3 BEDROOMS
-  1 OFFICE
-  1 LIVING
-  2 BATHROOMS
-  2 TOILETS
-  2 GARAGE



Living	112.84m ²
Garage	38.41m ²
Total	151.25m²
Home Width	12.80m
Home Length	20.05m

151m² | 3 bdr






Jennian
Inspiration



Taupiri Bay

This compact 117m² plan is perfect for a relaxed beach lifestyle. With seamless flow through the living spaces, it has been designed with Northland's coastal living in mind — simplicity at its very best.

KEY FEATURES

-  3 BEDROOMS
-  1 LIVING
-  2 BATHROOMS
-  2 TOILETS
-  0 GARAGE



Living	117.23m ²
Garage	0m ²
Total	117.23m²
Home Width	13.2m
Home Length	13.6m

117m² | 3 bdrmm






Jennian
Inspiration

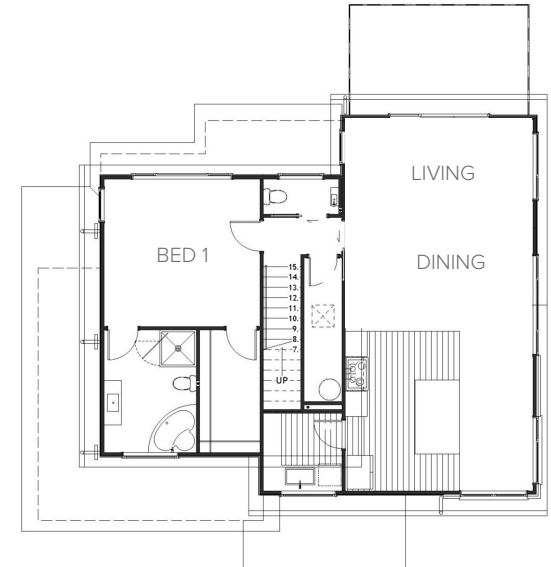
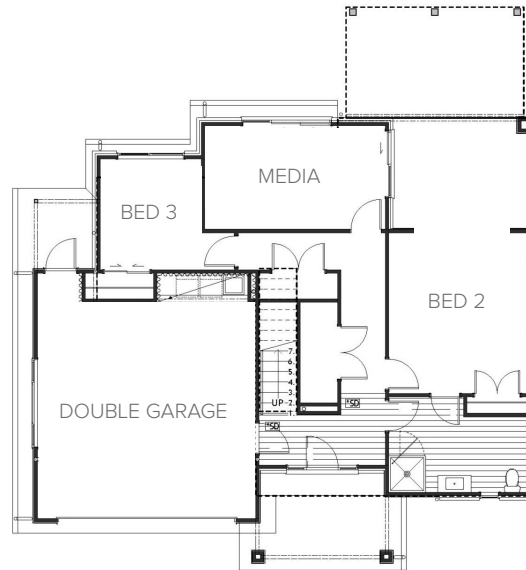


Parekura Bay

This spacious 224m² four bedroom home offers open plan living upstairs with a private master suite and room for the family on the ground floor, perfect for coastal sites with extensive views.

KEY FEATURES

-  3 BEDROOMS
-  2 LIVING
-  2 BATHROOMS
-  3 TOILETS
-  2 GARAGE



Living	184.48m ²
Garage	39.03m ²
Total	223.51m²
Home Width	13.5m
Home Length	15.05m

224m² | 3 bdr






Jennian
Inspiration

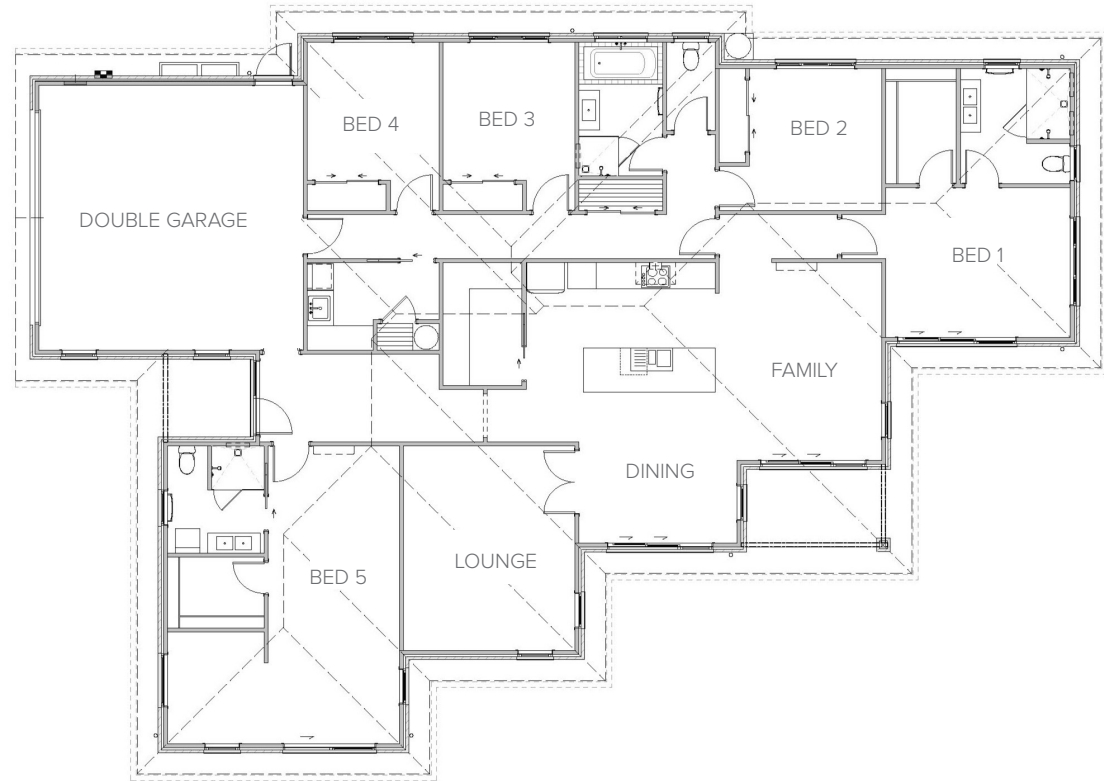


Pahi Bay

An extended family dream in this 263m² home featuring five bedrooms including a second ensuite suite complete with walk-in robe and living. This home really makes living easy.

KEY FEATURES

-  5 BEDROOMS
-  3 LIVING
-  3 BATHROOMS
-  3 TOILETS
-  2 GARAGE



Living	226.24m ²
Garage	37.2m ²
Total	263.44m²
Home Width	16.11m
Home Length	23.61m

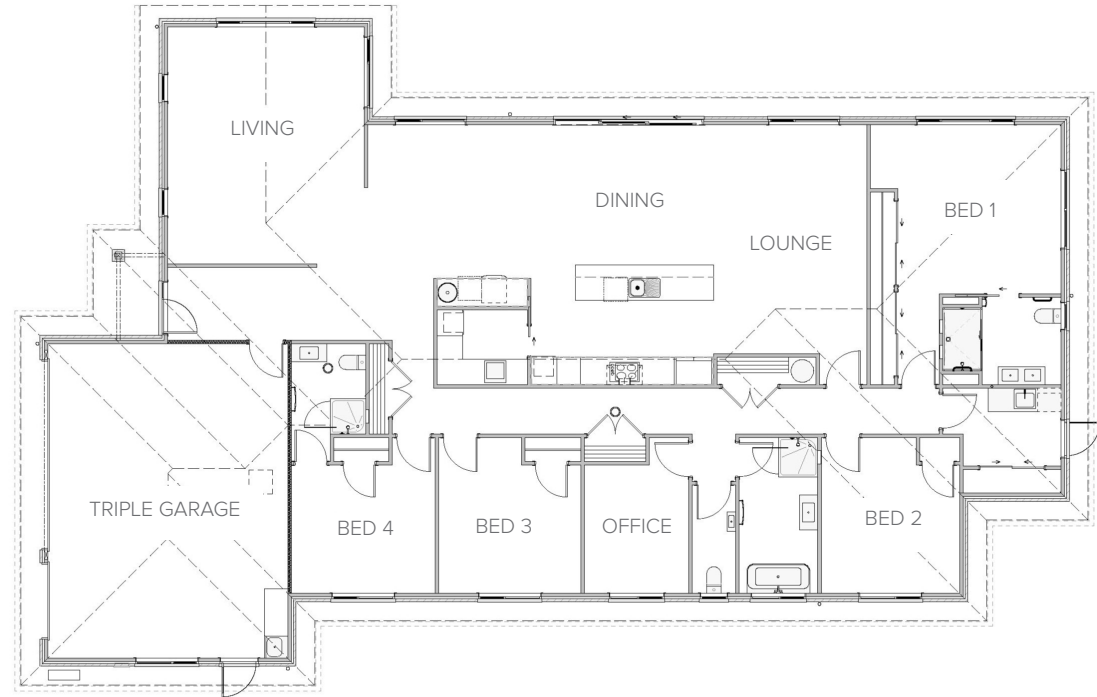
263m² | 5 bdrm

Jennian
Inspiration








Tinopai Bay

Large spaces in this 323m² home make it welcoming for all, with four bedrooms, including a guest suite, and a kitchen made for entertaining, this home has room for all the family.



KEY FEATURES

-  4 BEDROOMS
-  2 LIVING
-  3 BATHROOMS
-  3 TOILETS
-  3 GARAGE

Living	272.92m ²
Garage	50.2m ²
Total	323.14m²
Home Width	19.24m
Home Length	25.95m

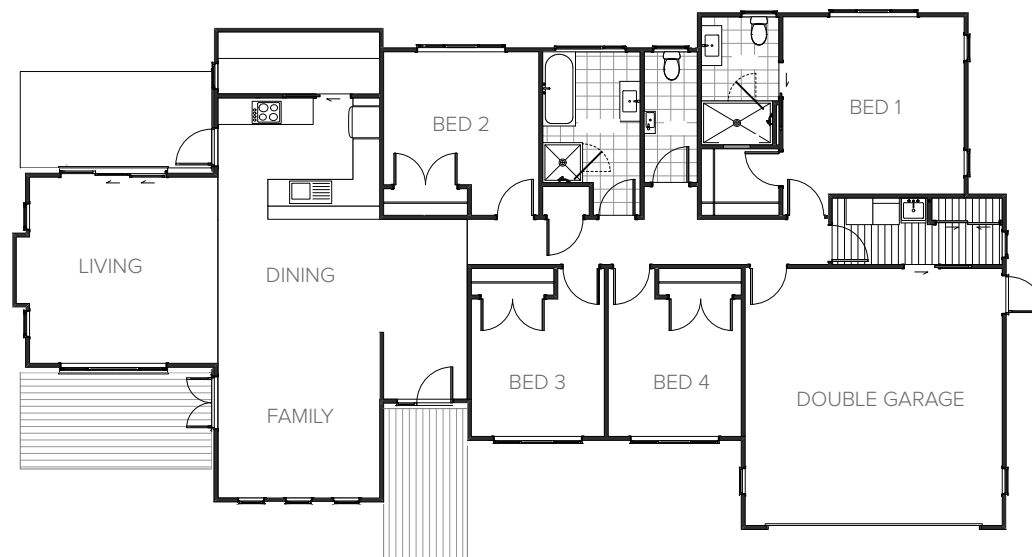
Jennian
Inspiration

323m² | 4 bdr








Papahuia Bay

A four bedroom 203m² home with large living areas, this revised standard Jennian plan has great workable spaces in the kitchen and Laundry, with stunning patio spaces off the living and kitchen.



KEY FEATURES

-  4 BEDROOMS
-  2 LIVING
-  2 BATHROOMS
-  2 TOILETS
-  2 GARAGE

Living	168.74m ²
Garage	34.87m ²
Total	203.61m²
Home Width	11.6m
Home Length	22.43m







Jennian
Inspiration

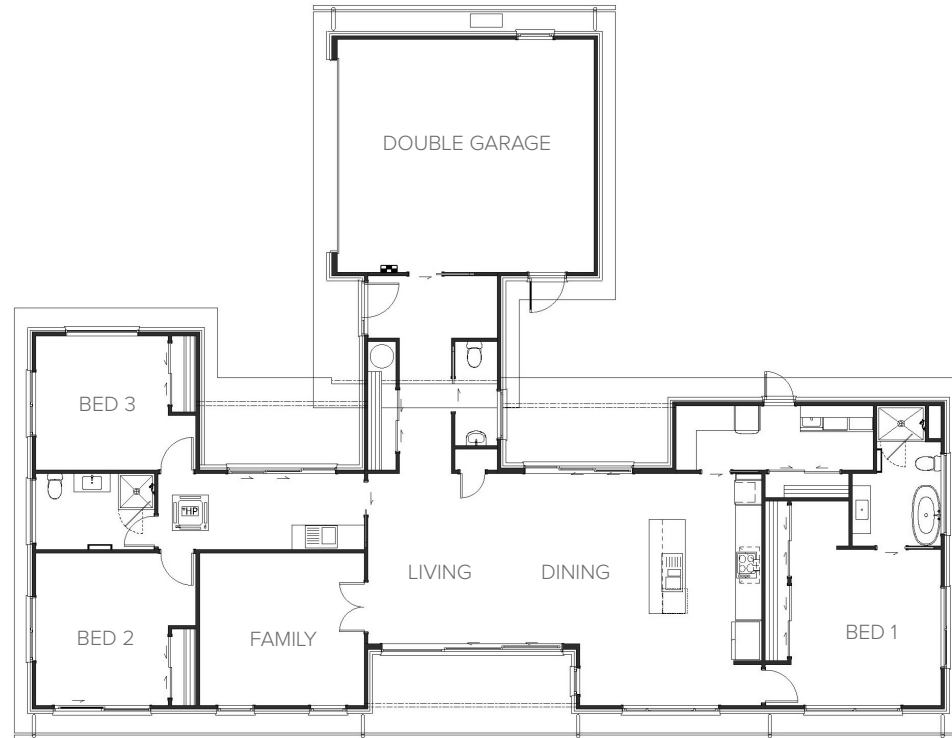


Ngunguru Bay

Made for coastal winds, this 222m² beauty is created for stunning views with spaces to escape the wind and get all day sun. With multiple outdoor areas, this home is perfect for Northland living.

KEY FEATURES

-  3 BEDROOMS
-  1 BAR
-  2 LIVING
-  2 BATHROOMS
-  3 TOILETS
-  2 GARAGE



Living	182.76m ²
Garage	39.05m ²
Total	221.81m²
Home Width	16.77m
Home Length	22.74m

222m² | 3 bdr

Jennian
Inspiration

Connect with us.

Jennian Homes Northland
E rena.belcher@jennian.co.nz
P 027 511 4021
jennian.co.nz

*We can't wait
to meet you...*

Jennian
Inspiration

