

Inspiration



Jennian
HOMES

Feels like family



©2020 Jennian Homes

All rights reserved. No part of this publication may be copied or reproduced in any form, either in whole or in part without written permission of the Publisher. While every effort has been made to ensure the accuracy of the information in this publication, the Publisher assumes no responsibility for errors or omissions or for any consequences of reliance on this publication. Images and photographs in this book may include accessories, furnishings, finishes and features not included in your Residential Building Contract with your Jennian Homes Franchisee. Your New Home Consultant will provide full details of what is and isn't included in your home. Floor area sizes may include alfresco options.

For the home
you've always
wanted...

Jennian
HOMES
Feels like family™



Your personality.

At Jennian Homes we pride ourselves on delivering the home you've always wanted. We'll work with you to create a home that reflects your personality and suits your lifestyle. Custom design your home from your ideas, or add your personal touches to one of our market leading plans. The choice is always yours.

Our expertise.

Jennian Homes has been building the homes New Zealanders love for more than 35 years, so you can rest assured you're in safe hands when you choose Jennian Homes.

We're New Zealand's most awarded builder in the Registered Master Builders House of the Year awards, and we complete all of our homes to the same award-winning standards of design, quality and workmanship.

Our superior buying power and industry relationships make a Jennian home exceptional value for money. We deal with trusted New Zealand based suppliers and recognised brands, so you can be sure everything in your home will be of the highest quality.

And we'll stay in touch after you move in. Your new Jennian home will come complete with a 10-year Standard Master Build Guarantee and an industry-leading 36 month remedial maintenance period.

Completion Promise

The Jennian Franchisor and Franchisees promise to ensure that your home is completed in accordance with the terms and conditions of your signed Jennian Master Builders Residential Building Contract, provided you comply with your signed Master Build 10-Year Guarantee.



Signed

Ada

2020

Franchisor

Jennian
HOMES

Your personality Our expertise

New Zealand's
most
awarded builder.



Again and again
and again...
and again.

Jennian
HOMES
Your personality Our expertise





35+ years

We have been building the homes New Zealanders love more than 35 years, so you can rest assured you're in safe hands when you choose Jennian Homes.



Peace of mind

Jennian Franchisees offer a 36 month defects warranty. That's a whopping 24 months longer than the current industry standard. For you, that's real peace of mind.



100% Kiwi

Jennian only deals with New Zealand's leading building suppliers and manufacturers. We are proud to be 100% kiwi owned and operated.



Community wellbeing

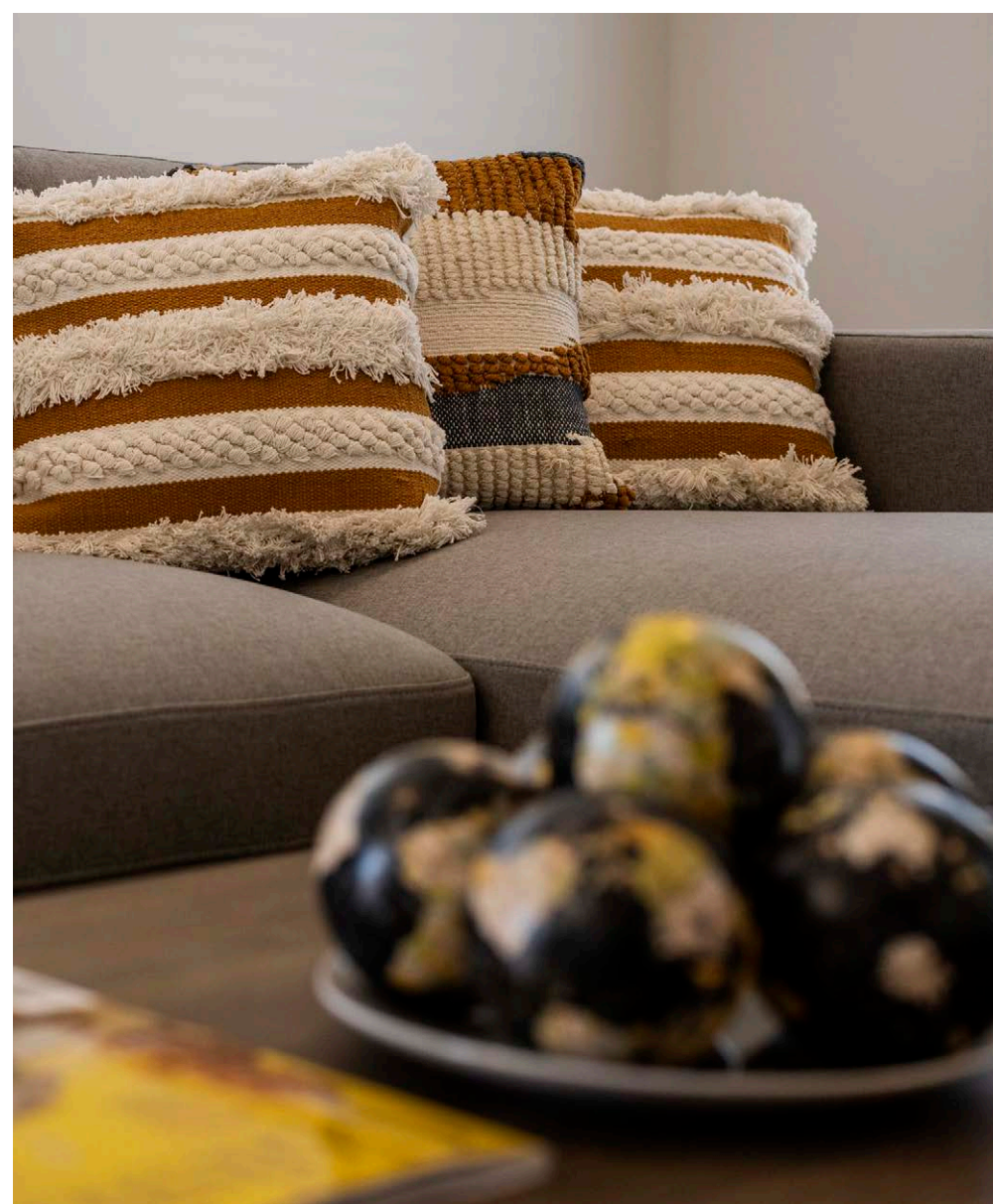
Community wellness and the health of all New Zealanders is very important to us and we are proud supporters of the Heart Foundation amongst other initiatives.



Feels like family

Jennian is owned by Kiwi families. We build homes for families and we treat people like family. So when you build with Jennian, it feels like family.

For more information visit jennian.co.nz





Be
inspired.

Your new home can be whatever you want it to be; a proven plan that's tried and true, or a completely unique design created to complement your personality and lifestyle. Often, it will be something in between the two. That's when a little inspiration can help.

We've carefully selected a range of home designs to provide inspiration for your new home. Use one as the starting point for your own creation, or combine elements from several to form the home that's perfect for you and your family.



Highlander

 3

 2

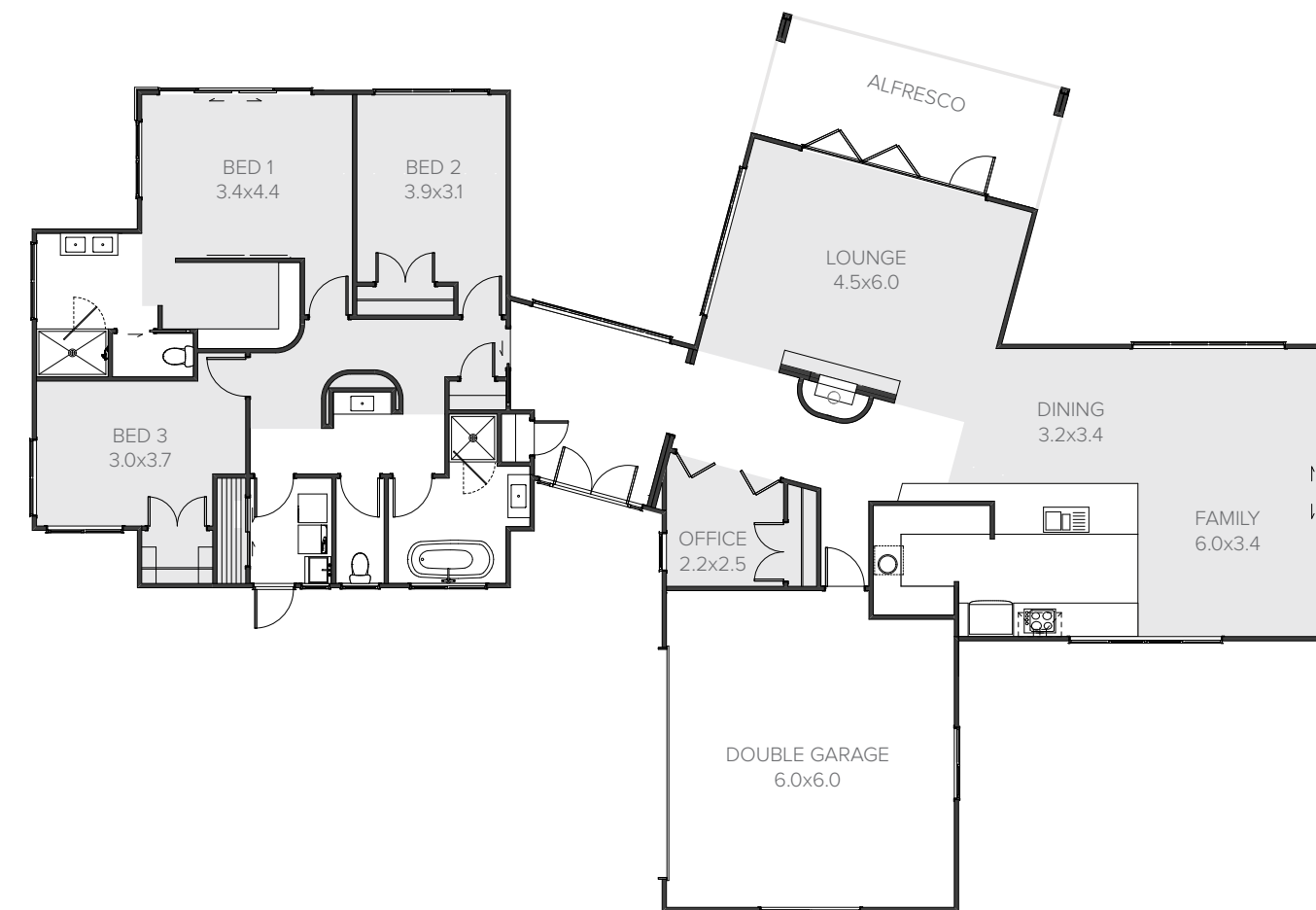
 2

 2

 2

Innovative family living

An innovative family home that offers ample space and contemporary design features. Three generously proportioned bedrooms and two bathrooms, a spacious family kitchen area and a separate formal lounge complete this clever design.



Living	211.00m ²
Garage	40.44m ²
Alfresco	16.12m ²
Total	267.56m²
Home Width	18.79m
Home Length	27.28m

267m² | 3 bdrm



Merlot

 3

 2

 2

 2

 2

Spacious family living

This substantial family home ticks all the boxes with its generous open-plan living area giving you oodles of space. At its heart is a large central kitchen featuring a walk-in scullery that’s as practical as it is pretty. This and the feature lounge surround the large outdoor space created by this home’s layout. The master is a private and separate escape with large glazed sliding doors that can open onto your own patio.



Living	180.94m²
Garage	39.53m²
Total	220.47m²
Home Width	14.51m
Home Length	19.97m

220m² | 3 bdrm



Langdale

 3

 1

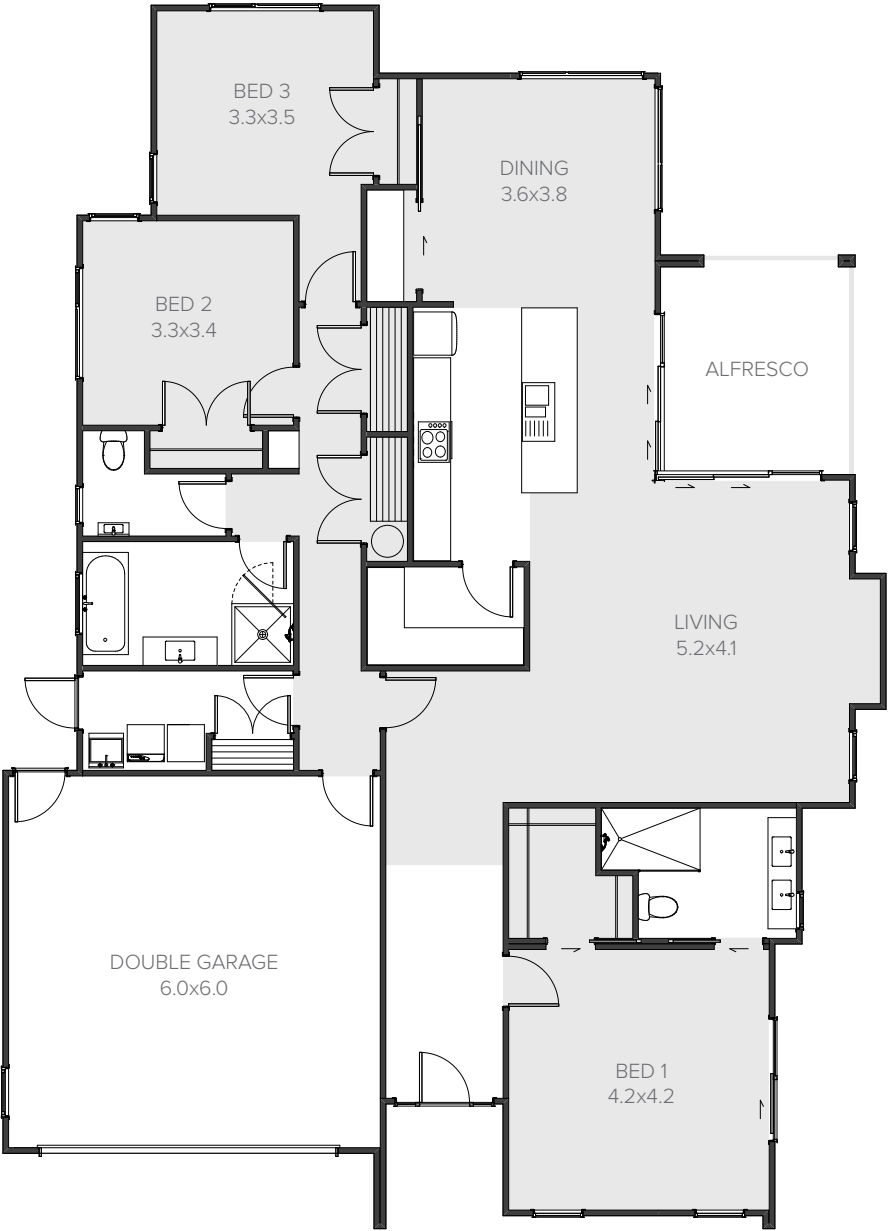
 2

 2

 2

Rest and relaxation

The Langdale may have striking street appeal but it’s more than just a pretty face. This three bedroom home exudes contemporary charm and luxury. The open-plan living area is the heart of the home and the contemporary kitchen serves up easy everyday living while catering to keen entertainers. The scullery is well-equipped with plenty of storage and bench space. Glass sliders open from the living spaces to an inviting outdoor area, where it’s easy to serve meals alfresco.




Living	169.02m ²
Garage	37.74m ²
Alfresco	11.07m ²
Total	217.83m ²
Home Width	14.30m
Home Length	19.81m

218m² | 3 bdrm



Brougham

3

2

2

2

2

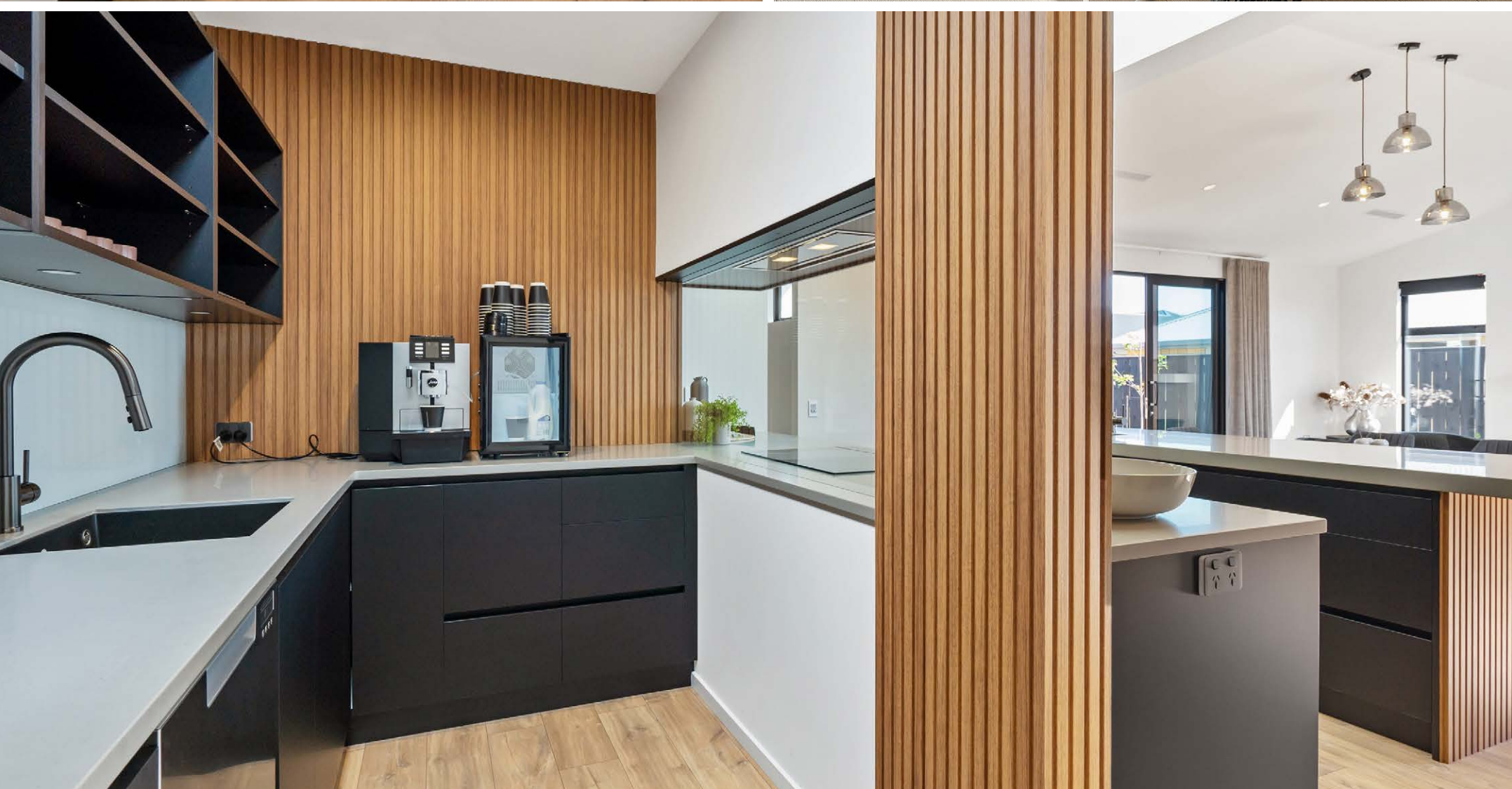
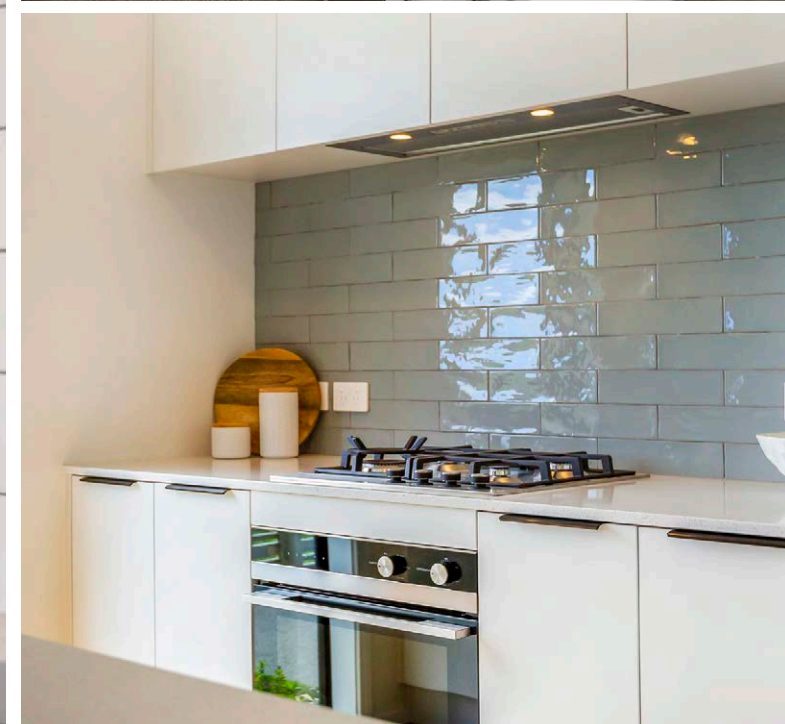
Sleek and stylish

The sleek designer kitchen at the heart of this home’s two open-plan living spaces makes for an entertainer’s paradise. Feature windows run the length of the living space, flooding the home with light and maximising views. An adjoining wing houses three generous bedrooms and quiet space ideal for study. From the street, a striking combination of colours and claddings makes this home stand out from the rest. A stylish and modern family home.



Living	164.58m ²
Garage	40.06m ²
Alfresco	12.38m ²
Total	217.02m ²
Home Width	14.20m
Home Length	20.78m

217m² | 3 bdrn





Cook

 3

 2

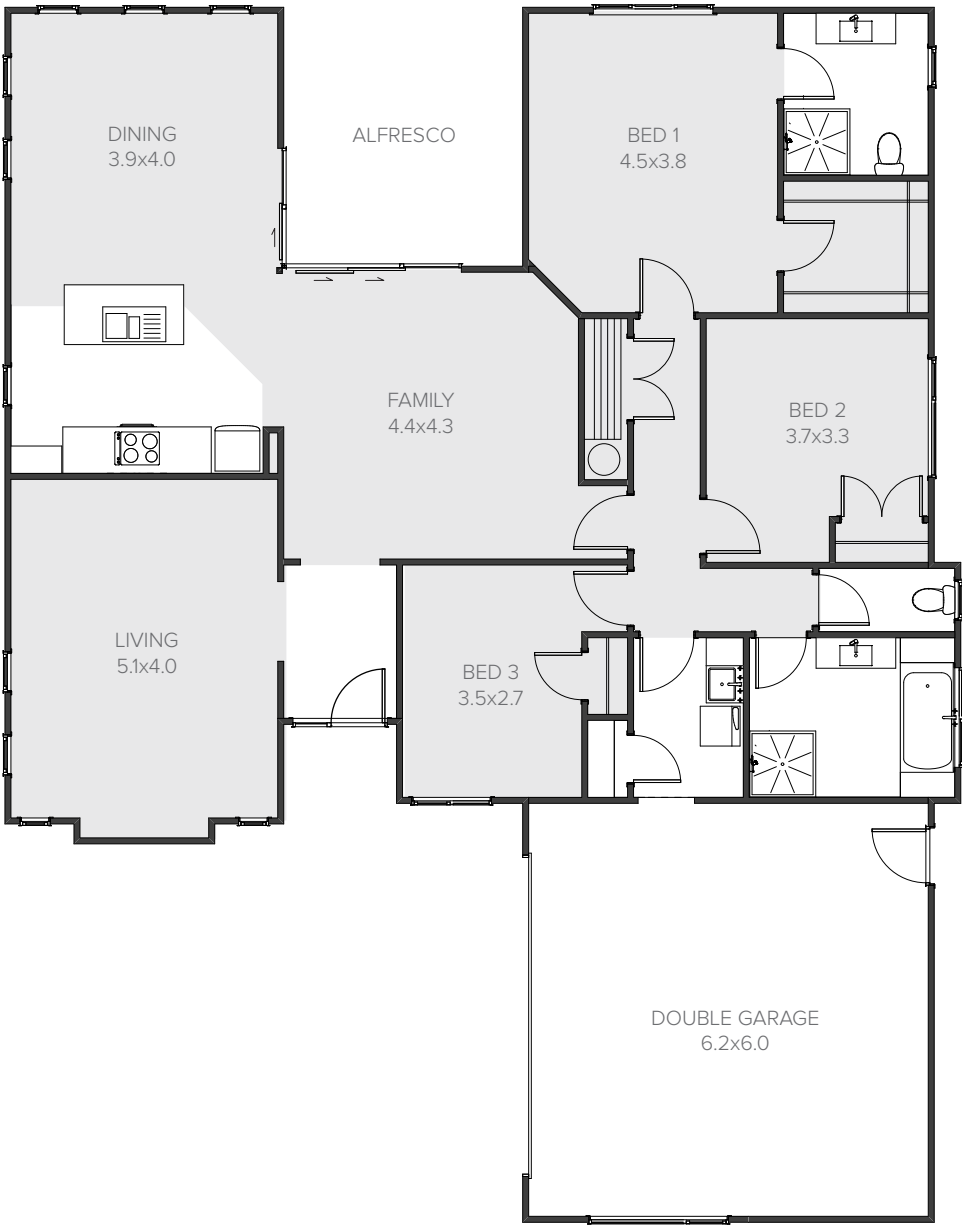
 2

 2

 2

Striking symmetry

This generously proportioned home features a separate formal lounge, which could be a home theatre. The open-plan family/ dining area features stylish corner sliding doors opening out onto the alfresco area. The full length windows in the lounge and dining areas create striking symmetry. A separate laundry and ample storage, including attic space over the garage, complete this great family home.



Living	151.06m ²
Garage	43.25m ²
Alfresco	6.65m ²
Total	200.96m ²
Home Width	14.40m
Home Length	18.30m

201m² | 3 bdrm



Mead

 3

 2

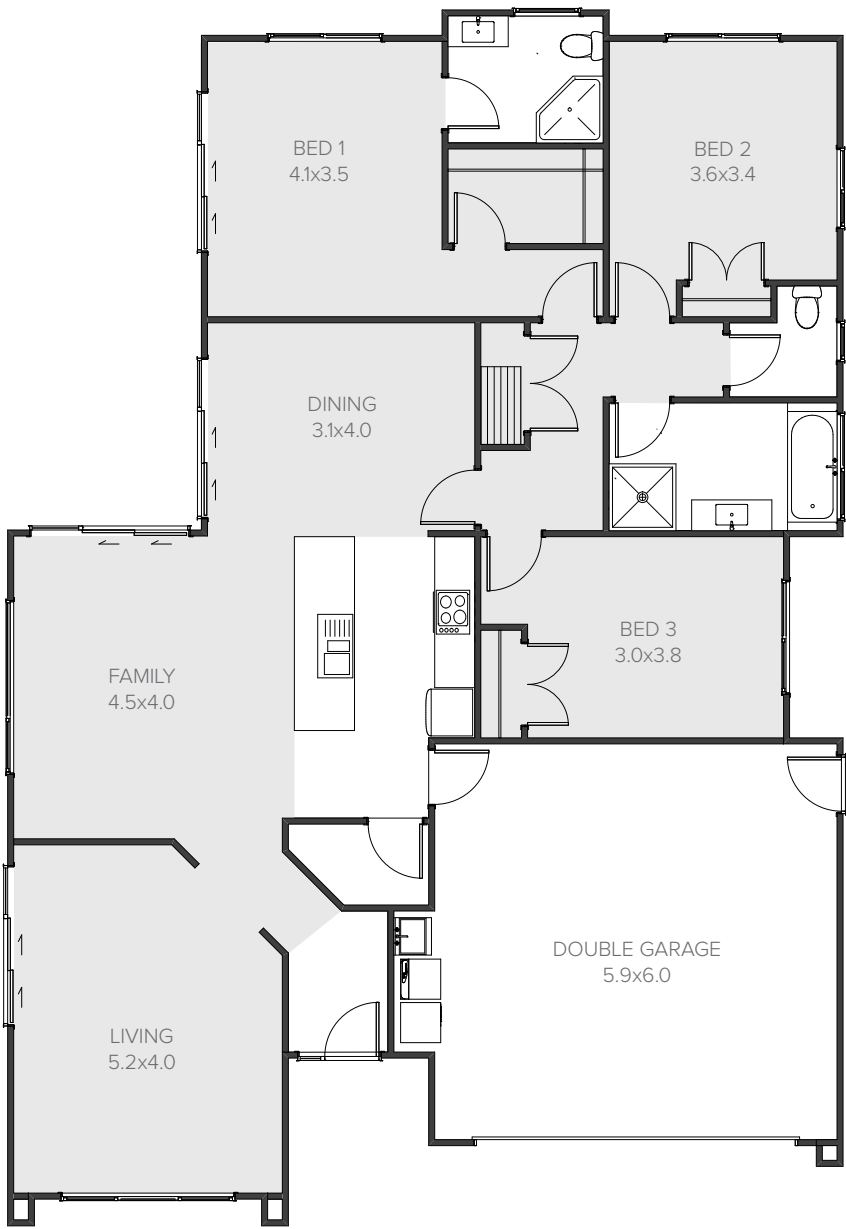
 2

 2

 2

Suburban sanctuary

The Mead is a carefully considered three bedroom design with all the modern conveniences sought by the growing family. This three bedroom home features large open dining and living areas, plus a formal lounge perfect for five star hospitality. The generous master bedroom doubles as a parental retreat and boasts a walk-in wardrobe plus ensuite.



Living	147.38m ²
Garage	38.38m ²
Total	185.76m ²
Home Width	12.50m
Home Length	18.19m

186m² | 3 bdrm



Seabreeze

 3

 1

 2

 2

 2

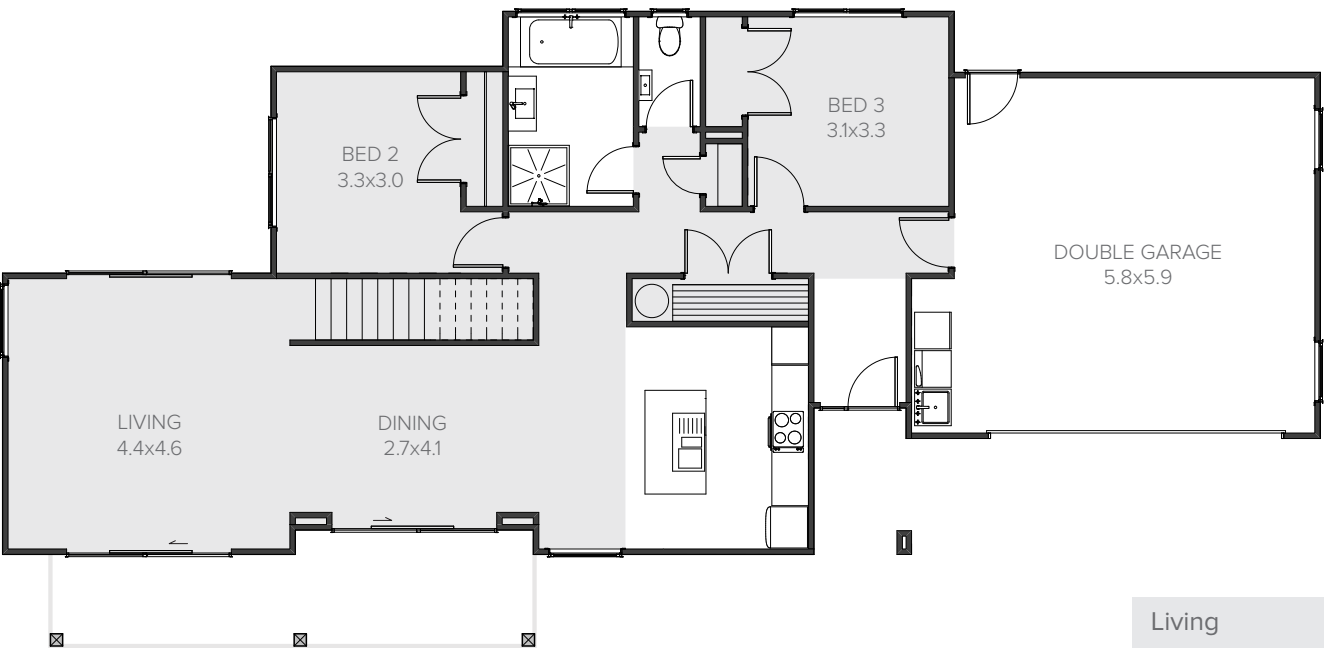
Relaxed family living

This lovely three bedroom, two bathroom home has a warm and refreshing feel. The open-plan kitchen, dining and living areas flow out to an alfresco entertaining area via the lounge. There's so much room in this home, perfect for your visiting friends and family.

FIRST FLOOR



GROUND FLOOR








Living	143.78m ²
Garage	37.88m ²
Total	181.66m ²
Home Width	8.90m
Home Length	21.60m

182m² | 3 bdrm



George

	3		1		2		2		2
---	---	---	---	---	---	---	---	---	---

Stylish interior

An attractive three bedroom home that is ready to welcome you and your family with open arms. The stylish interior makes this the perfect family retreat.








166m² | 3 bdrm

Living	129.39m ²
Garage	37.06m ²
Total	166.45m ²
Home Width	12.70m
Home Length	17.3m

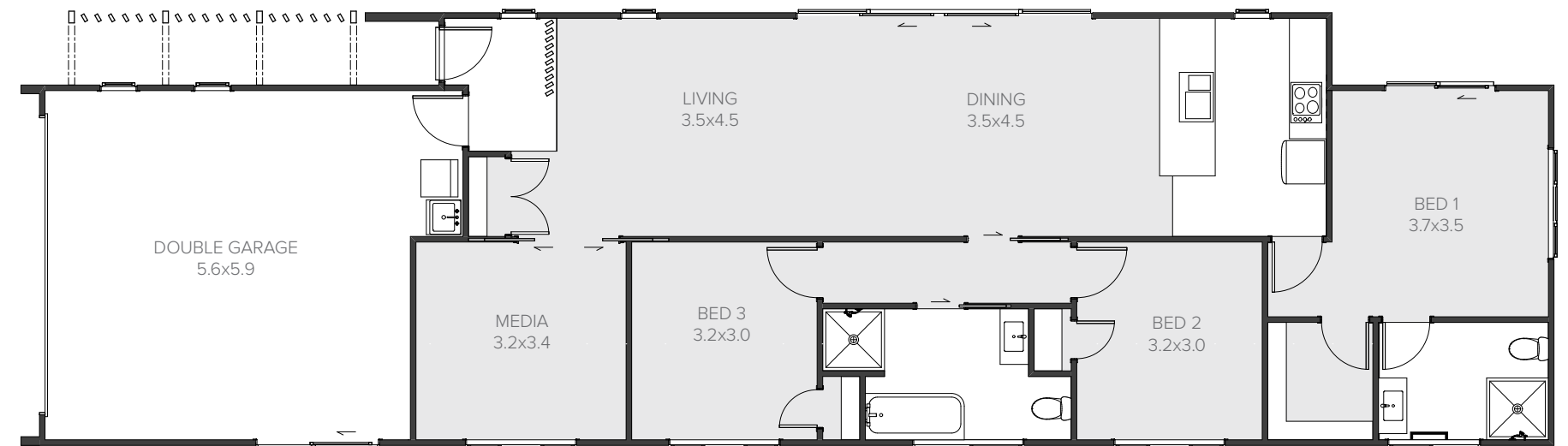


Catalina

	3		2		2		2		2
---	---	---	---	---	---	---	---	---	---

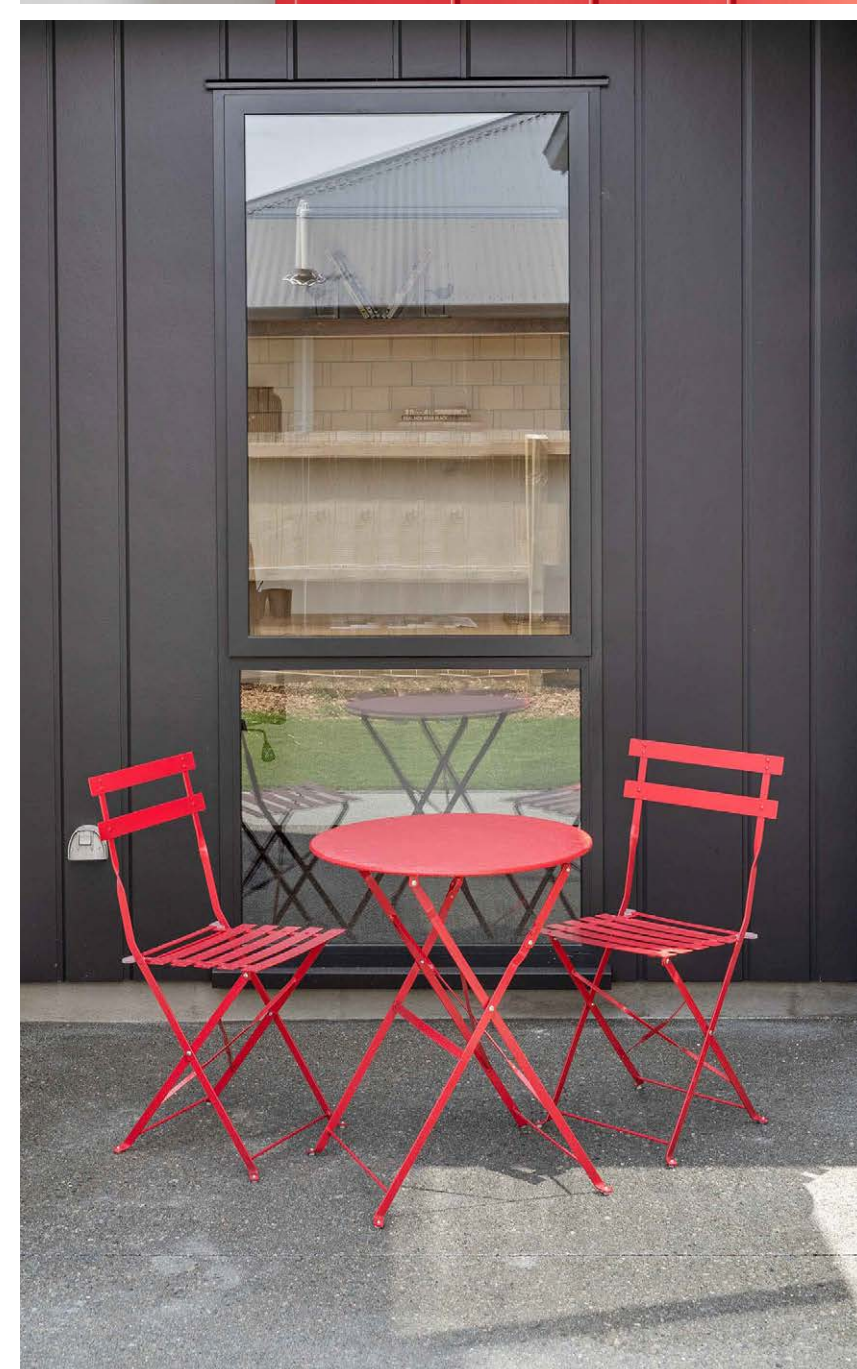
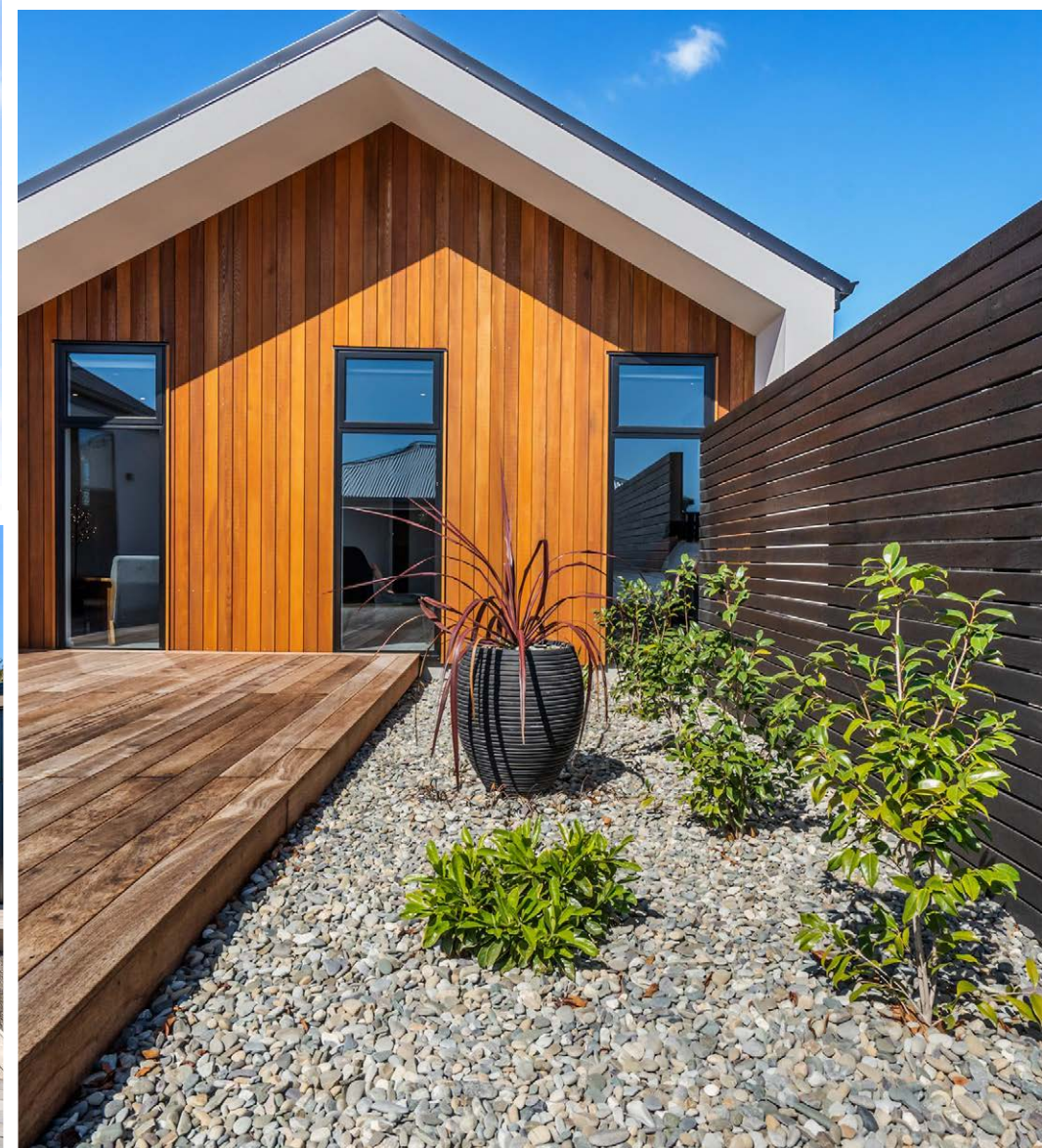
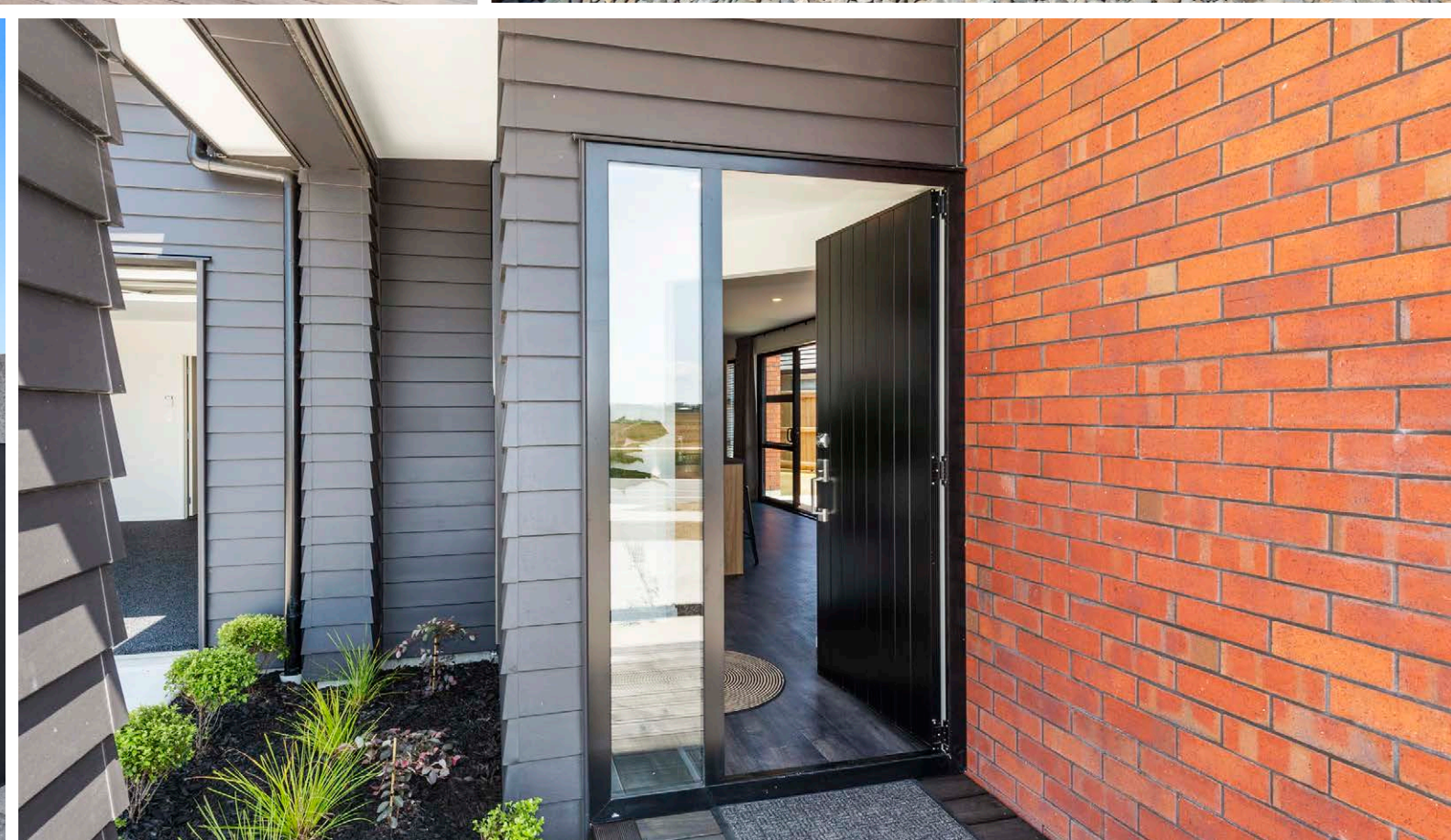
Sleek and elegant

The Catalina combines elegant open-plan living with efficient use of space, to deliver a modern and stylish three bedroom home. The master bedroom features an ensuite, large walk-in-wardrobe and a slider, which opens out to your own private patio area. Contemporary street appeal is created by framing vertical cedar in a bold steep gable.



160m² | 3 bdrm


Living	122.30m ²
Garage	37.84m ²
Alfresco	9.60m ²
Total	160.14m²
Home Width	7.00m
Home Length	24.80m





Rossini

 4

 2

 2

 2

 2

Suburban hideaway

Get away from it all in this expansive and private home. Unload the groceries in the dual access scullery and enjoy the open-plan living and alfresco entertaining areas away from the street. The perfect retreat for you and your family. Upstairs, three generous sized bedrooms accompany the spacious master suite, complete with its own private balcony. Spread out and enjoy life in your own stately suburban hideaway.



269m² | 4 bdrm

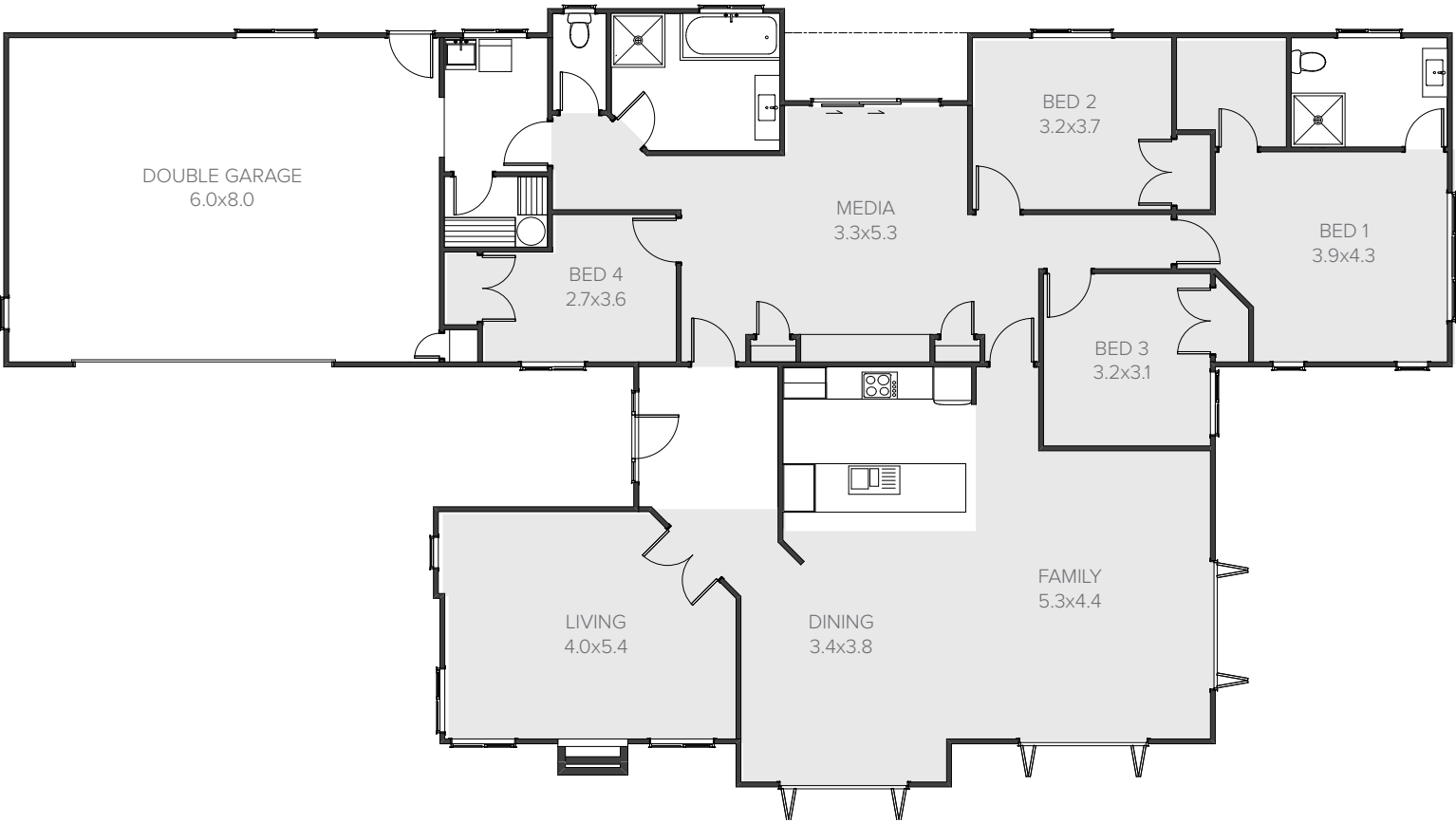


Monaco

-  4
-  3
-  2
-  2
-  2

Focus on living

Welcome to a home that's big on features, starting with the option of a generous three-car garage. From the spacious entry you can access the formal lounge with a feature fireplace or find yourself in the huge open-plan family and dining area with central kitchen. Your home theatre requirements are well catered for in the separate media space and the fourth bedroom is ideally located to become your private study.



Living	204.24m ²
Garage	55.83m ²
Total	260.07m²
Home Width	14.45m
Home Length	26.90m

260m² | 4 bdrm

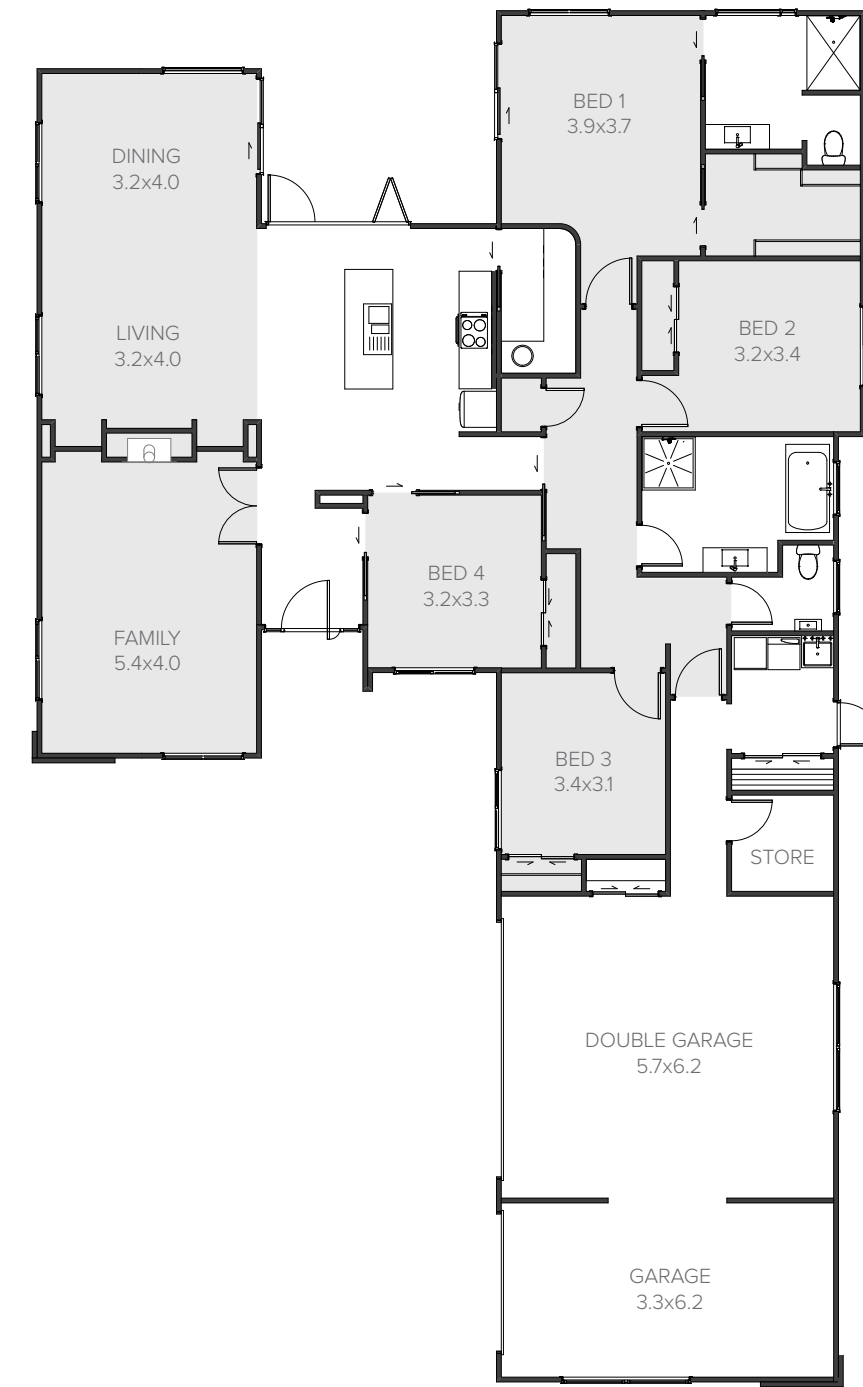


Hagart

	4		2		2		2		3
---	---	---	---	---	---	---	---	---	---

Flexibility and space

A spacious and multifaceted home, the Hagart is an ideal home design for busy families with multiple interests. The entryway opens onto a large dining and living space with a separate family room. The entertainer’s kitchen features an adjoining scullery, while a fourth bedroom is ideally positioned to double as a home office. With a separate laundry and store room, there’s ample space in the triple garage for recreational vehicles or perhaps a home studio. The possibilities are endless in this home.



Living	190.98m ²
Garage	67.28m ²
Total	258.26m²
Home Width	15.50m
Home Length	25.66m

258m² | 4 bdrm



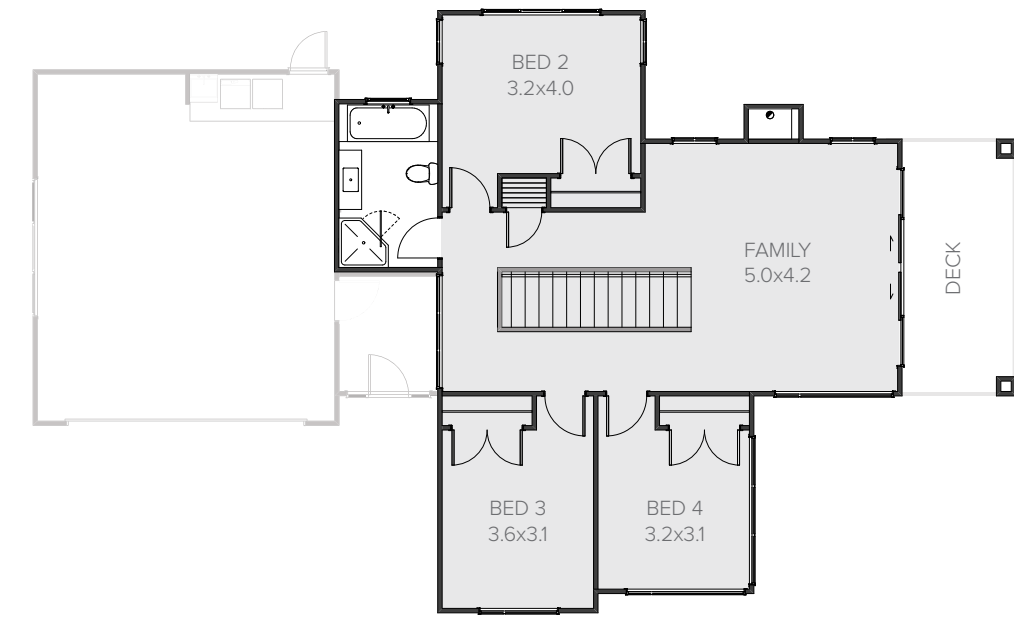
Uptown

-  4
-  2
-  2
-  3
-  2

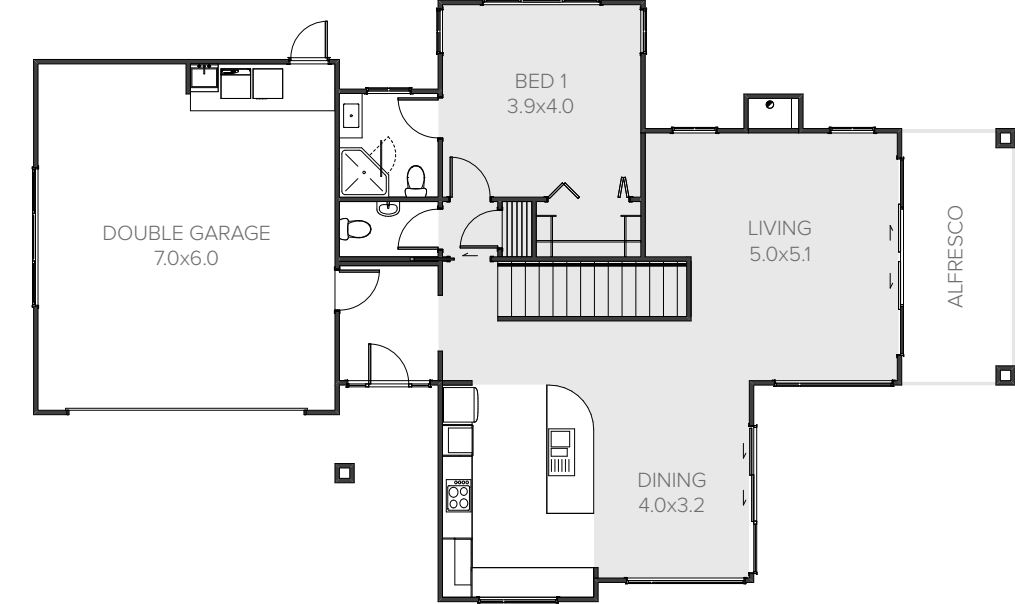
Pure wow factor

Uptown and upbeat - this two storey mono-pitch weatherboard home with feature cladding to columns has pure wow factor. Extensive use of full height glazing floods interior space with light, and creates a jewel box effect at night. The ground floor features family living spaces and the master suite. Upstairs, three bedrooms and a spacious family room with large covered deck offer the perfect teenage retreat.

FIRST FLOOR

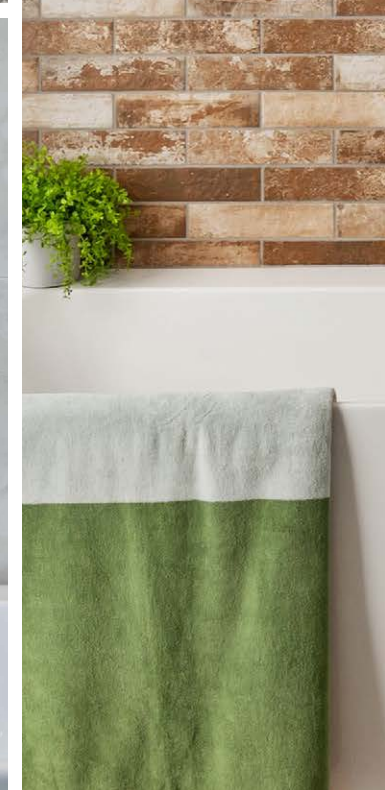
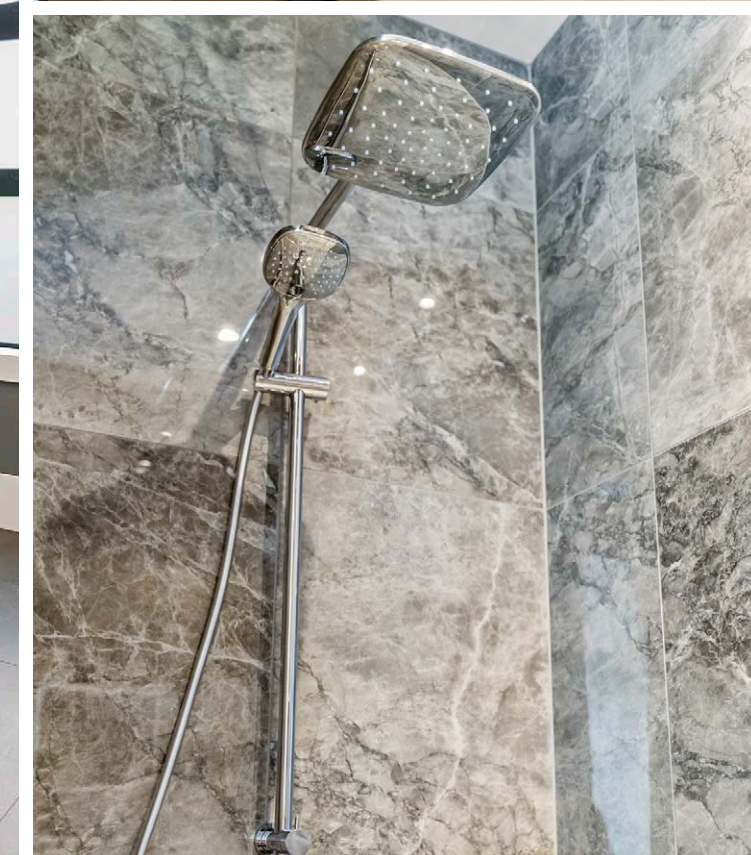


GROUND FLOOR



Living	189.72m ²
Garage	44.10m ²
Alfresco	23.92m ²
Total	257.74m²
Home Width	12.19m
Home Length	19.90m

258m² | 4 bdrm





Fifeshire

 4

 2

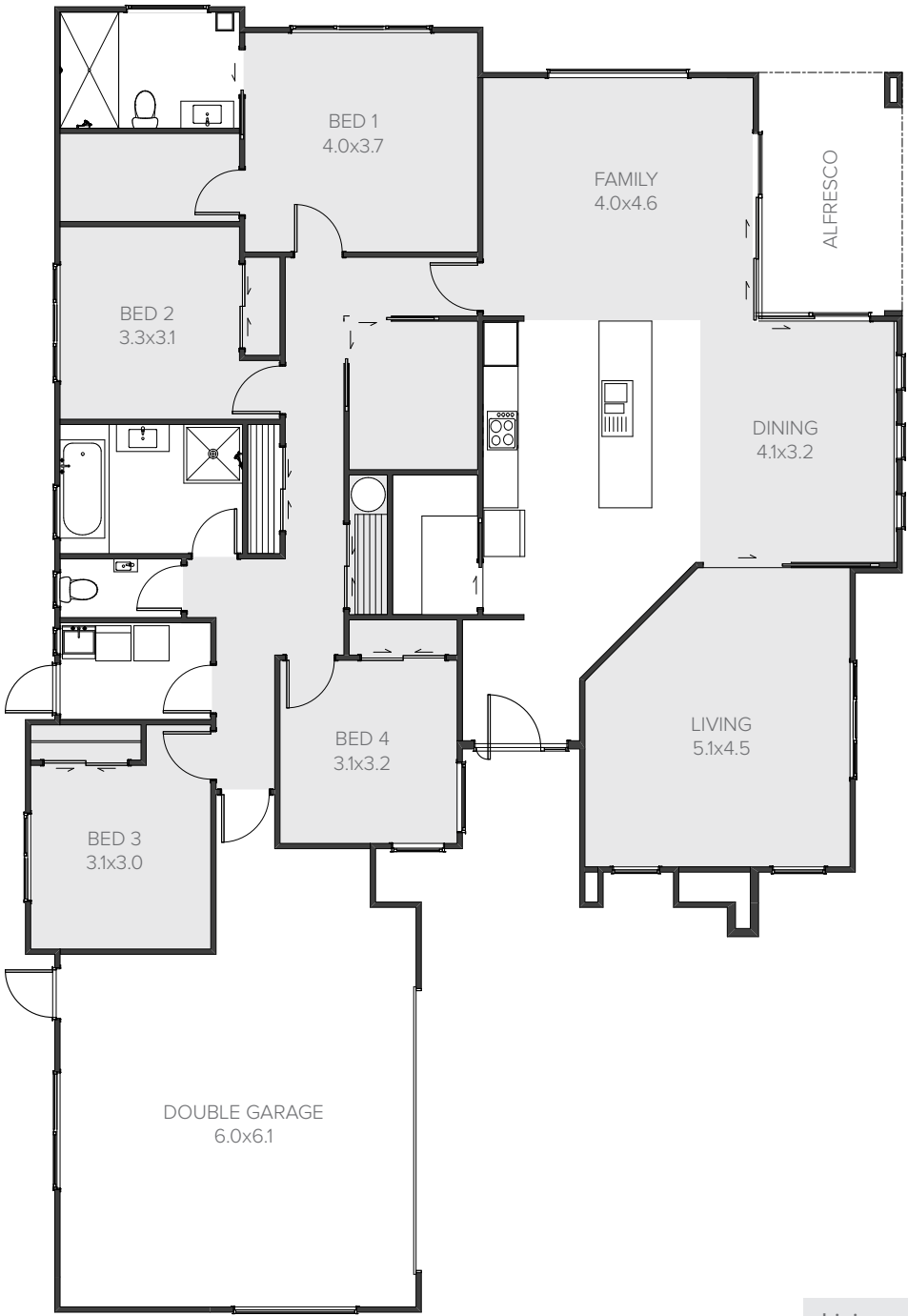
 2

 2

 2

Contemporary family living

This is family living with style. The home features a separate formal lounge with raking ceilings and fireplace, as well as 2.7 meter ceilings to the family living areas. Stylish bi-fold doors open to the outdoor entertaining areas. A generous scullery compliments the luxury kitchen and there’s a computer room, separate laundry, plentiful storage and even a workshop nook in the garage.



Living	189.92m ²
Garage	44.64m ²
Alfresco	10.14m ²
Total	244.70m ²
Home Width	14.9m
Home Length	22.2m

245m² | 4 bdrm

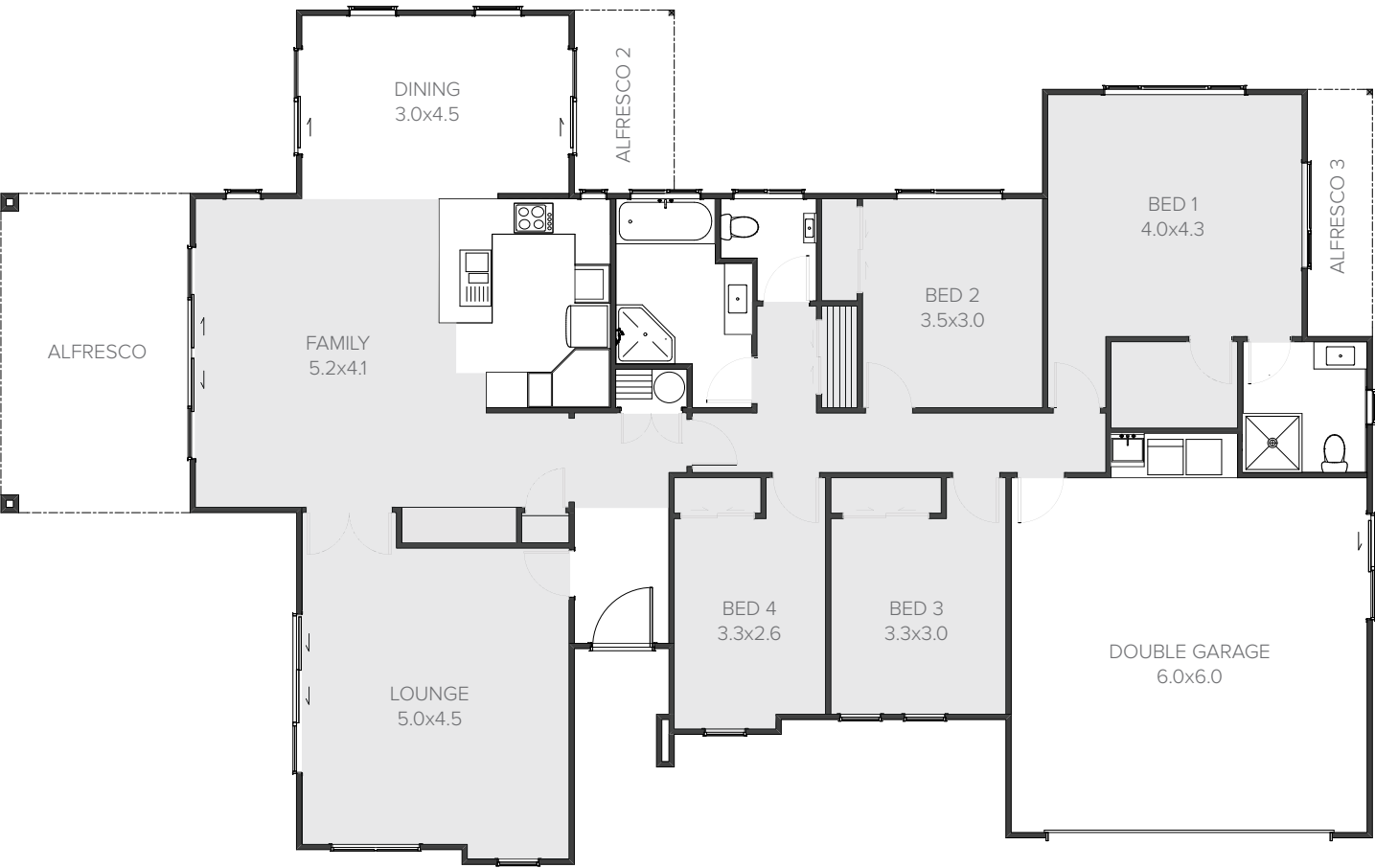


Altera

-  4
-  2
-  2
-  2
-  2

Room to spread out

An inspirational four bedroom home with separate formal lounge and spacious family kitchen area, linked to a huge alfresco through sliding doors. Add a dining space next to the kitchen and you'll have everything your family needs in this home.



241m² | 4 bdrm

Living	174.50m ²
Garage	38.99m ²
Alfresco	27.12m ²
Total	240.61m ²
Home Width	14.40m
Home Length	23.20m



Riverside

 4

 2

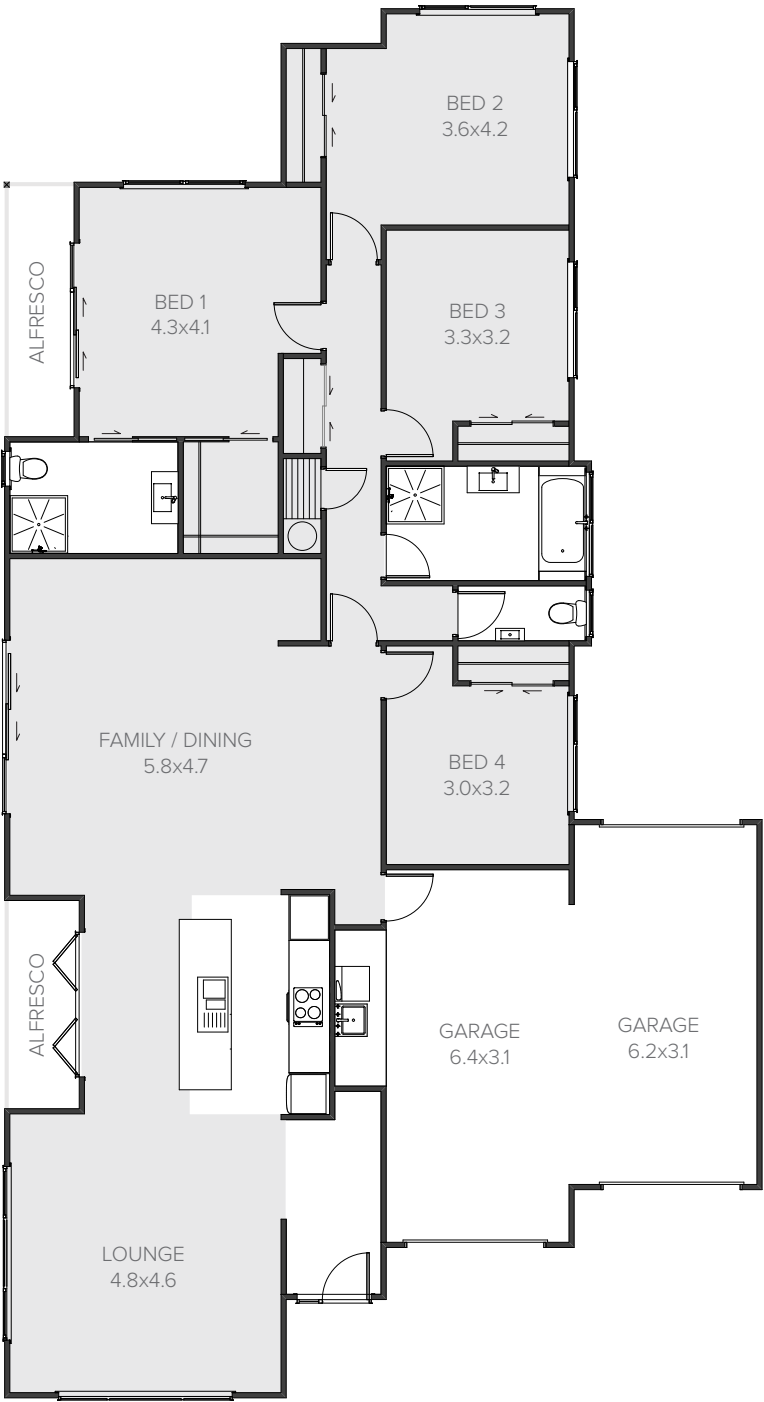
 2

 2

 2

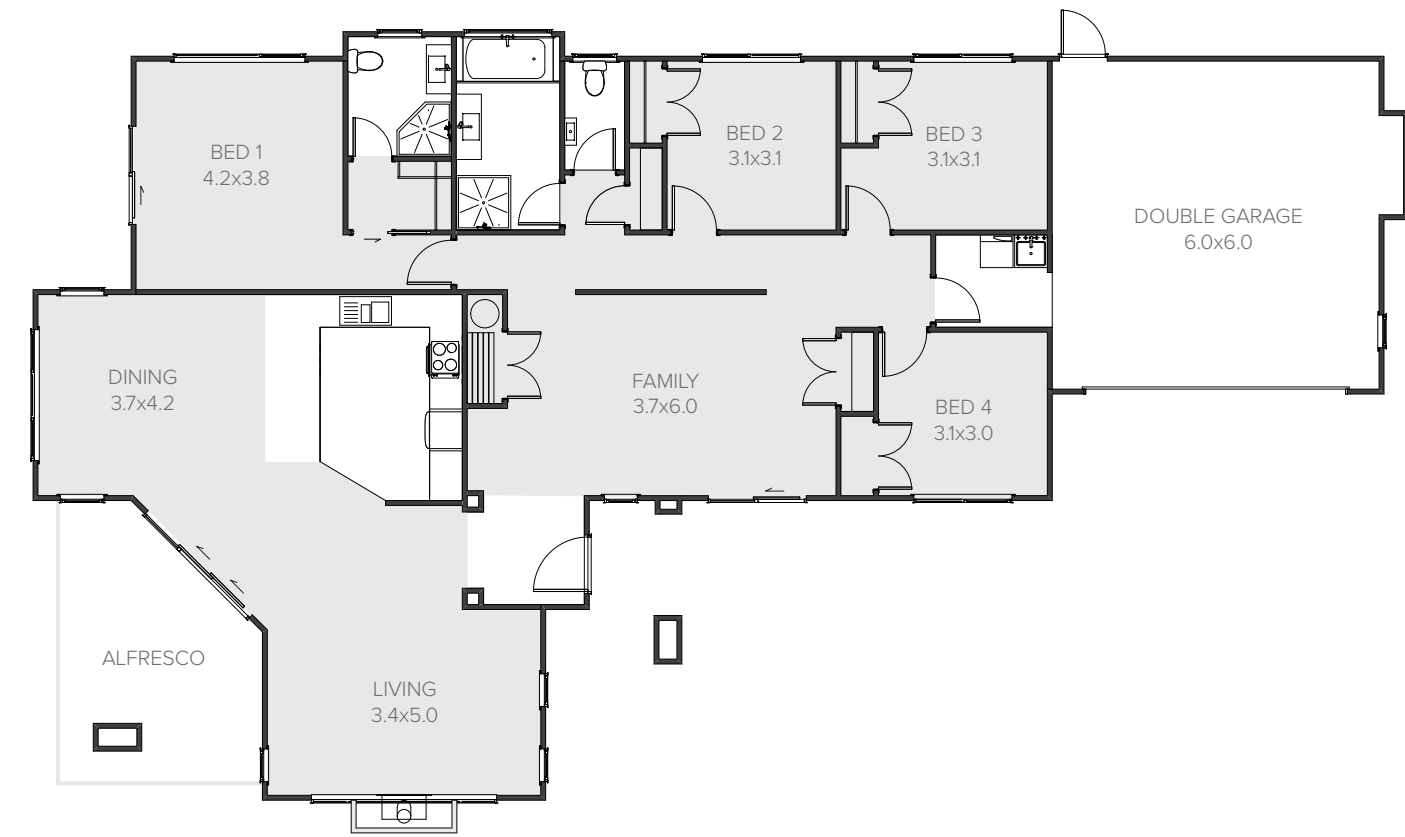
Style set in stone

A beautifully designed four bedroom home with spacious open-plan living areas that pour out onto your patio or deck. This home soaks up the sunshine for the best summer living for all the family to enjoy.



Living	177.23m ²
Garage	44.43m ²
Alfresco	9.60m ²
Total	231.26m ²
Home Width	13.10m
Home Length	24.02m

231m² | 4 bdrm



227m² | 4 bdrn

Waikaremoana

 4

 2

 2

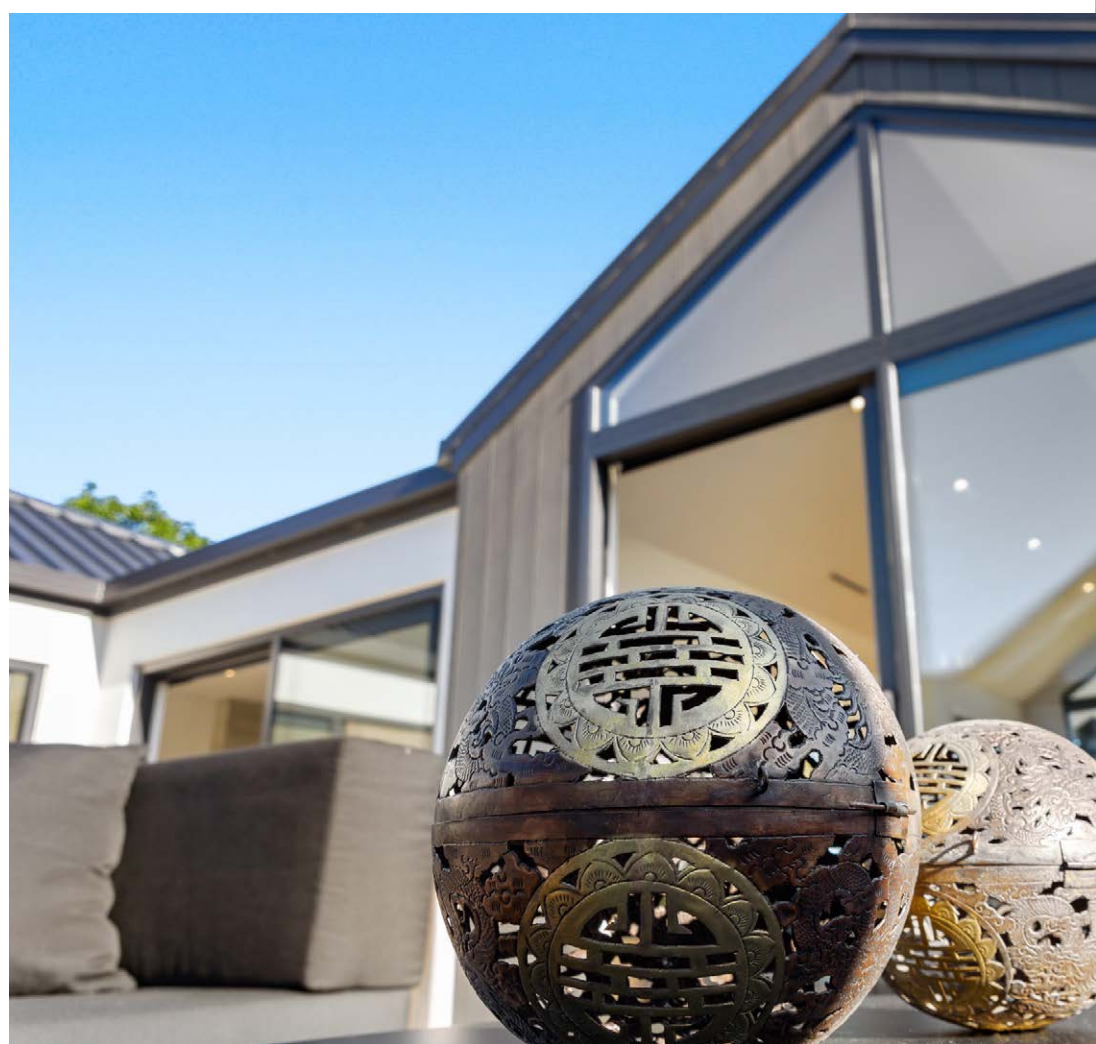
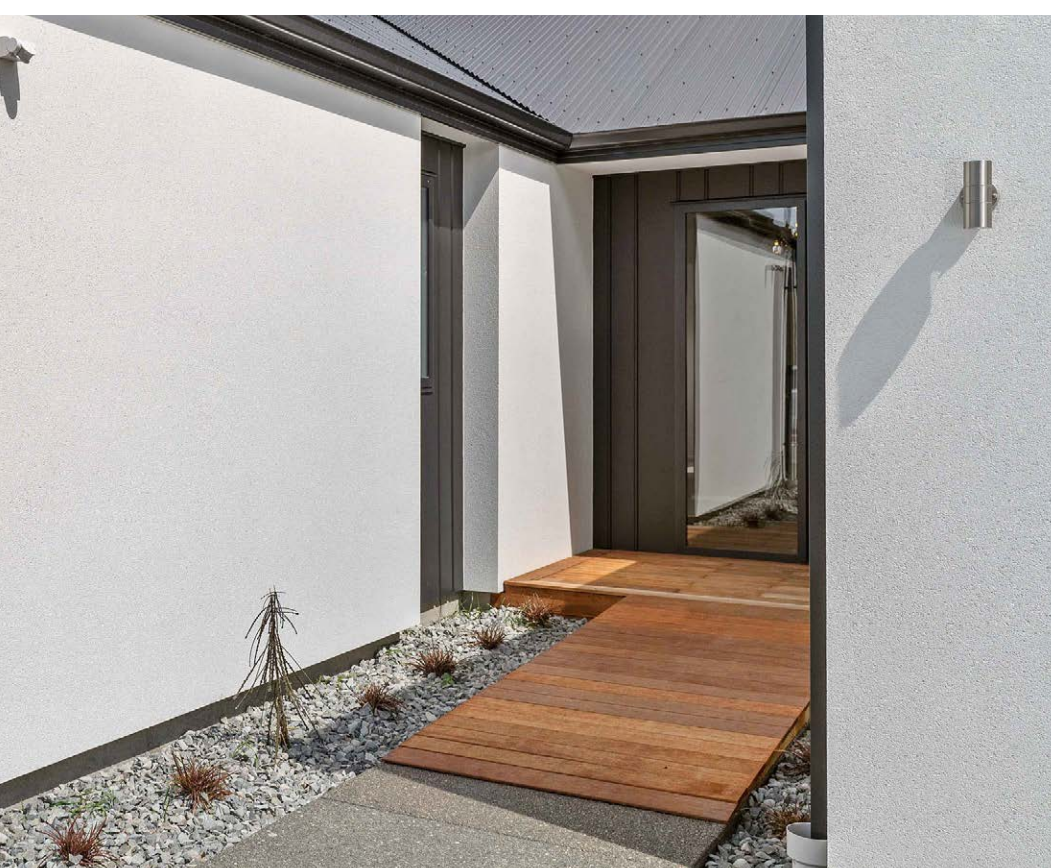
 2

 2

Pretty and practical

This creatively designed and spacious home comprises four double bedrooms and two living areas, providing endless space and privacy for all the family. Sliding doors lead from the living space to a dedicated patio area, perfect for family dining and entertaining.

Living	177.47m ²
Garage	42.29m ²
Alfresco	7.24m ²
Total	227.00m ²
Home Width	14.70m
Home Length	25.25m



Personalise a proven plan.

At Jennian Homes we invite you to personalise your home both inside and out. It's easy to customise your home with our range of style options.

A wide range of exterior claddings, rooflines and colours will make your home totally unique, even with our most popular designs.

Take a look at how different styles can transform the look of our home designs.





212m² | 4 bdrm

Chianti

-  4
-  2
-  2
-  2
-  2

Cosy, modern bungalow style

Cosy bungalow style combines with modern trends in this open-plan home, which features 2.7 metre ceilings to living areas, designer kitchen with huge scullery and a fireplace option in the lounge. There’s space for a computer nook beside the dining room too, and if you only need three bedrooms, a door from the entry will make bedroom four the perfect study.


Living	174.38m ²
Garage	37.64m ²
Total	212.02m ²
Home Width	15.09m
Home Length	21.43m



Summerhill

 4

 2

 2

 2

 2

Upscale urban oasis

Let the world know you’ve arrived. This upscale urban oasis will make the neighbours green with envy with its low-maintenance contemporary styling and superb street appeal. A mixture of classic brick and weather board on the outside, and stylish family living within.



208m² | 4 bdrm

Living	164.38m ²
Garage	37.62m ²
Alfresco	5.56m ²
Total	207.56m ²
Home Width	13.58m
Home Length	23.61m



Vanita

 4

 2

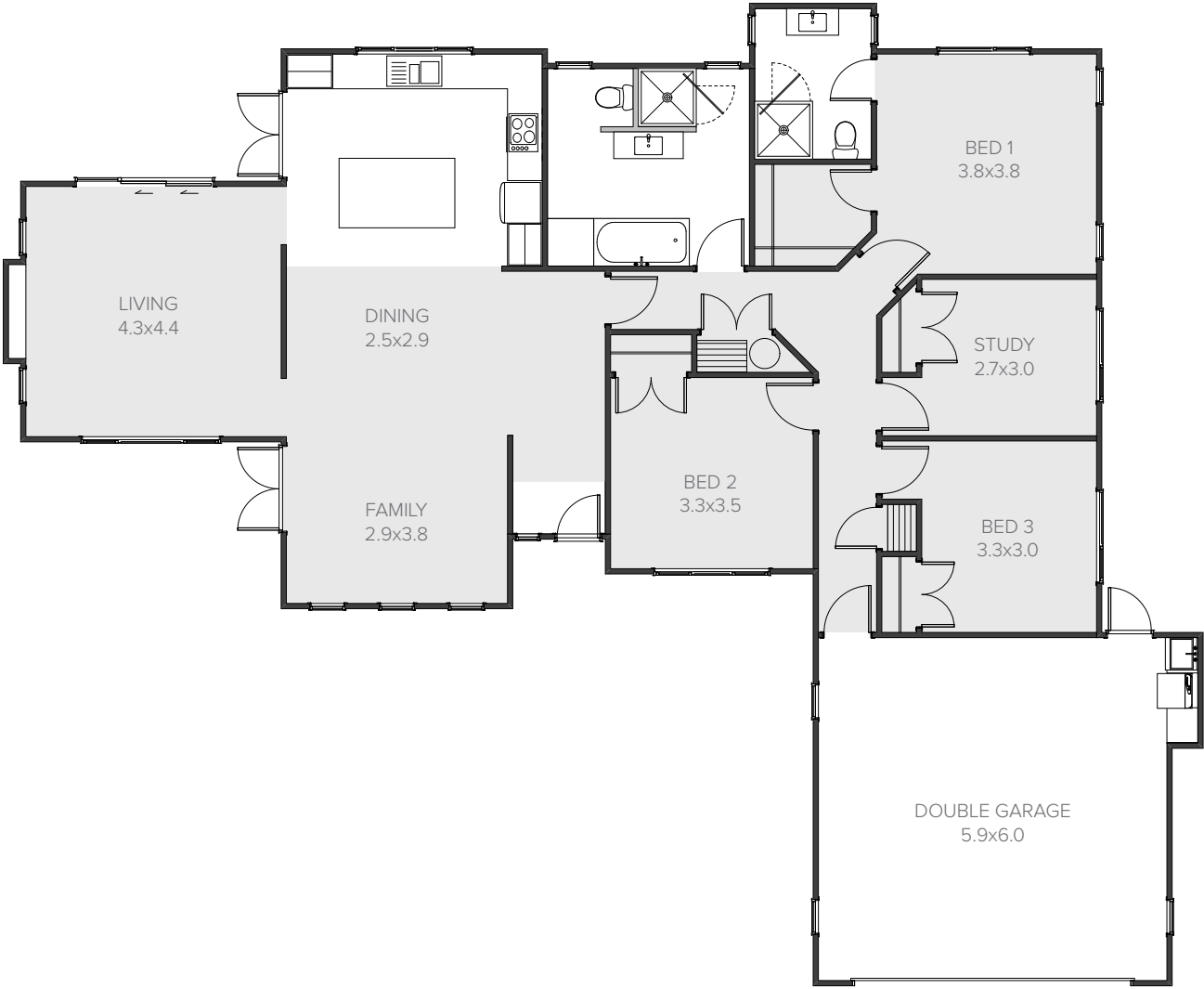
 2

 2

 2

Entertainer’s paradise

The large open-plan kitchen, dining and living area form the hub of this entertainer’s paradise, while a separate lounge for more formal occasions extends out onto a fabulous private courtyard and entertainment area. Just down the passage you’ll find four bedrooms and a unique contemporary bathroom. A stylish family home.








196m² | 4 bdrm

Living	157.06m ²
Garage	38.44m ²
Total	195.50m ²
Home Width	16.96m
Home Length	20.73m

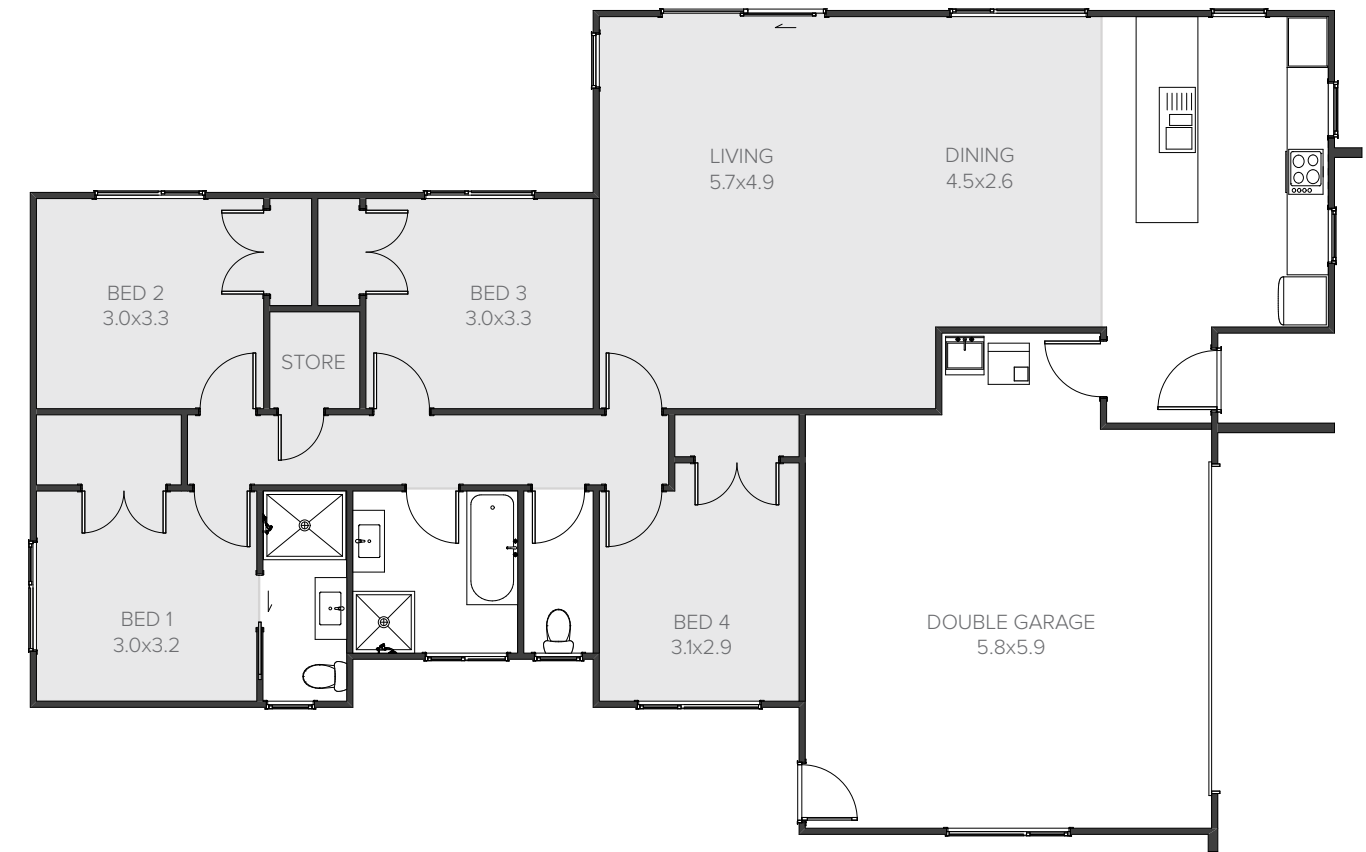


Alexandra

	4		1		2		2		2
---	---	---	---	---	---	---	---	---	---

Intelligent layout

Sit back and enjoy the good life in this open-plan four bedroom home. The intelligent layout of our Alexandra plan creates ideal living areas for the whole family at an affordable price.



171m² | 4 bdrm

Living	131.70m ²
Garage	39.32m ²
Total	171.02m²
Home Width	12.20m
Home Length	19.40m





Hamptons Wainscott

 4

 2

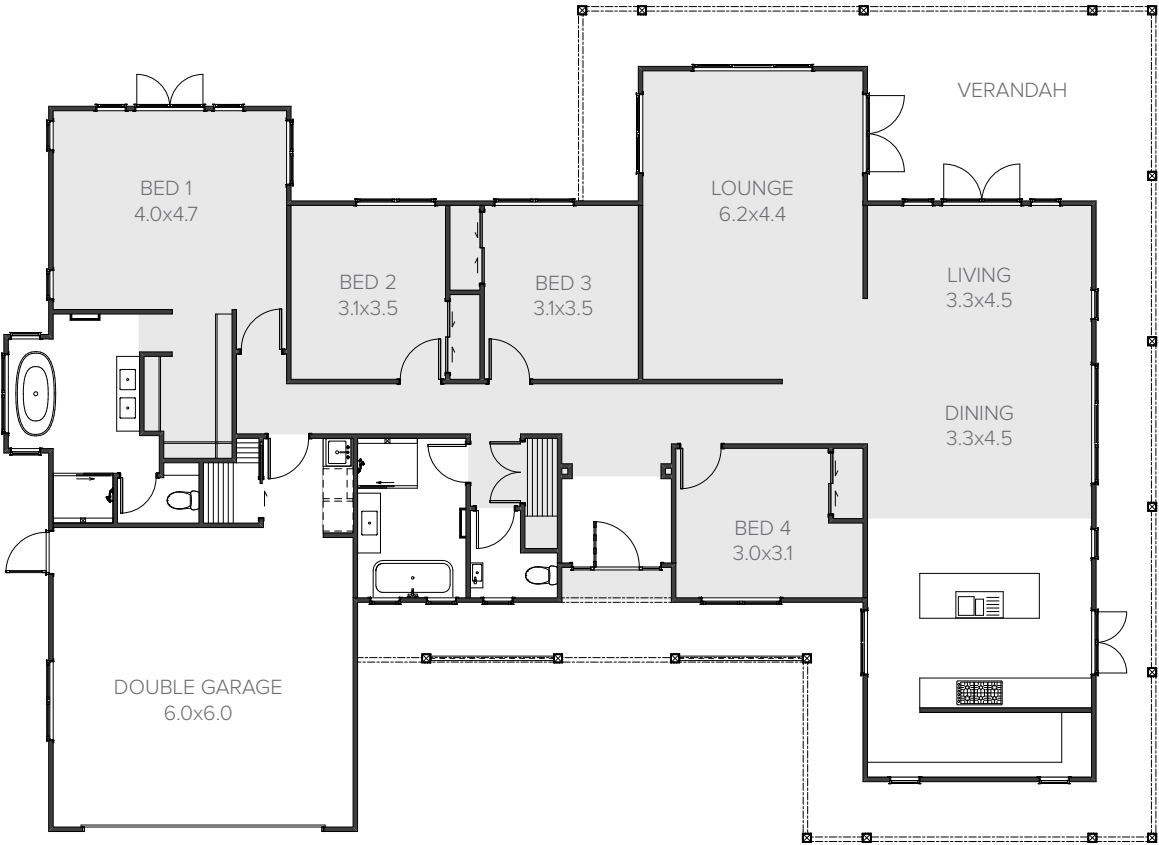
 2

 2

 2

Country style Hamptons living

This classic Hamptons style, single storey home features a dramatic entryway with high raking ceilings, the perfect introduction to the open-plan, expansive living areas. These open onto deep, wrap around verandas offering outdoor comfort all year round.



Living	199.96m ²
Garage	37.33m ²
Verandah	71.86m ²
Total	308.85m²
Home Width	15.35m
Home Length	21.92m

309m² | 4 bdrm



Hamptons Montauk

 5

 3

 4

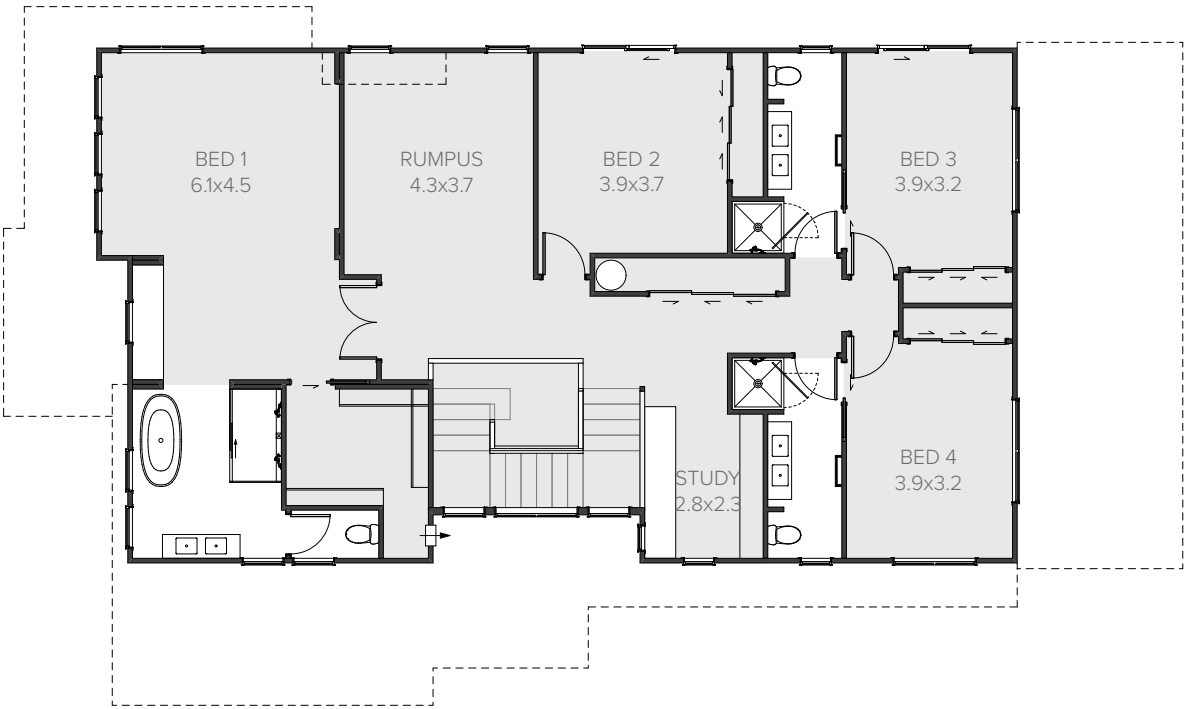
 4

 2

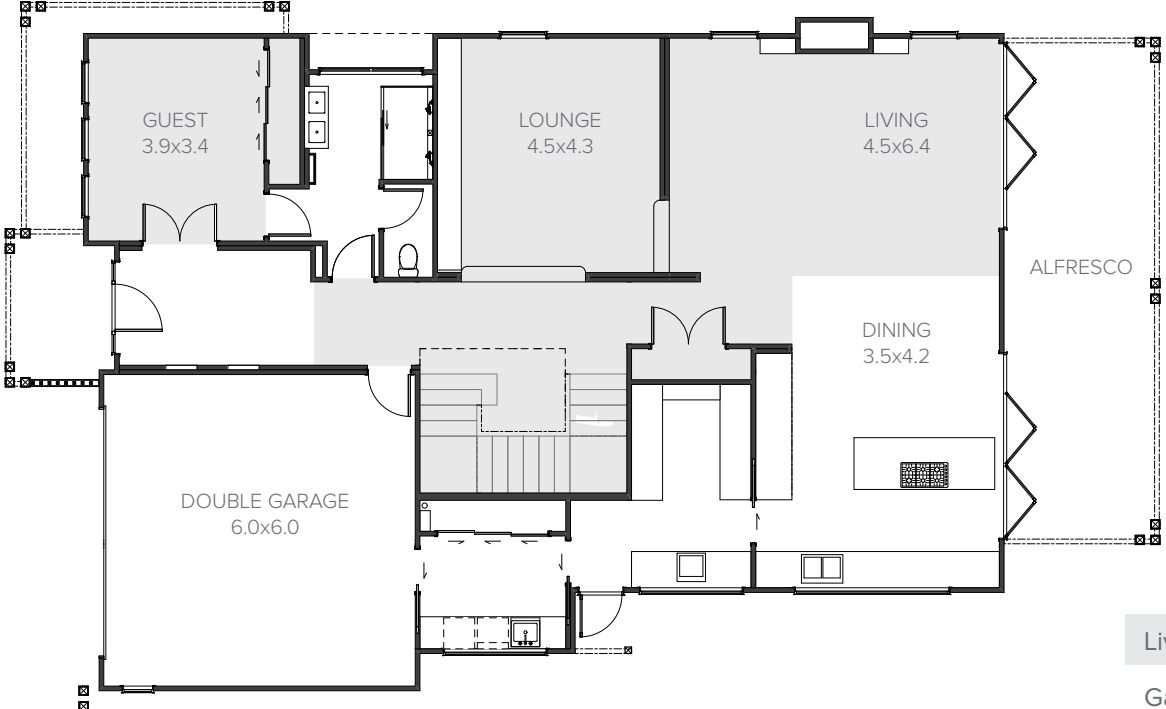
A traditional, sophisticated estate

Fresh, bright and beautifully proportioned this spectacular Hamptons style home brings together traditional architecture and sophisticated style. Contemporary low-maintenance cladding takes the place of traditional timber weatherboards. The sprawling, open-plan master suite with free standing bath provides a luxurious getaway in this two storey, substantial family home.

FIRST FLOOR

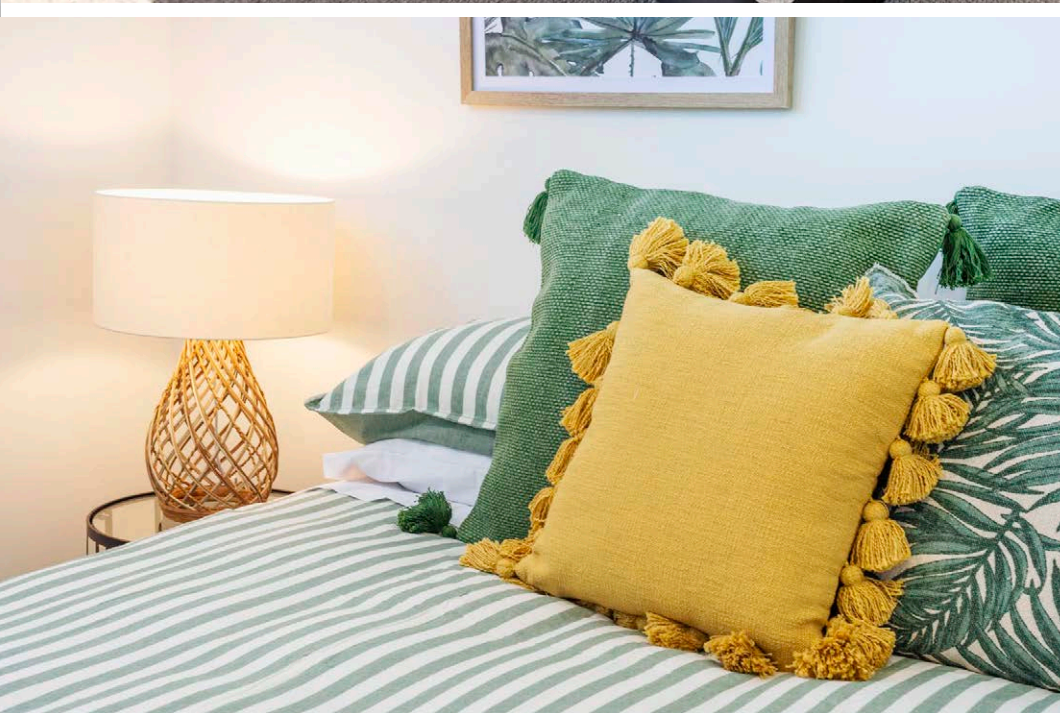


GROUND FLOOR



Living	326.65m ²
Garage	37.44m ²
Alfresco	32.54m ²
Total	396.63m ²
Home Width	13.01m
Home Length	22.09m






397m² | 5 bdrm





Lockheed

Duplex

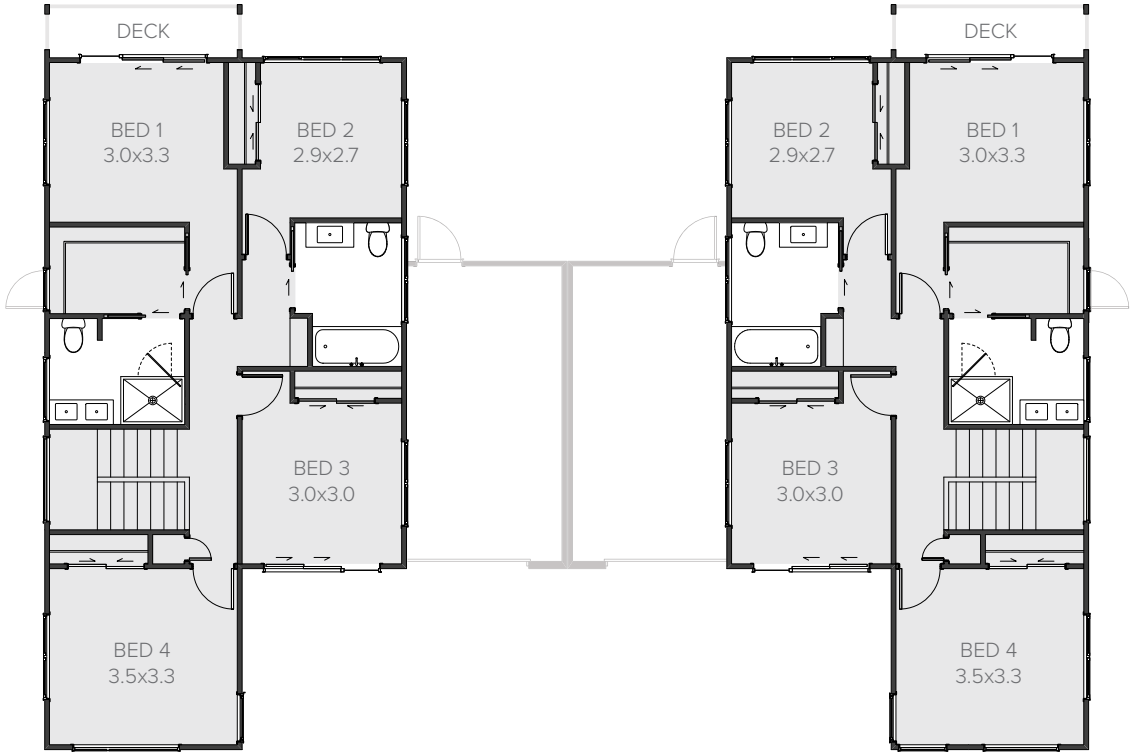
 4	 1	 2	 3	 2
---	---	---	---	---

*Per Dwelling

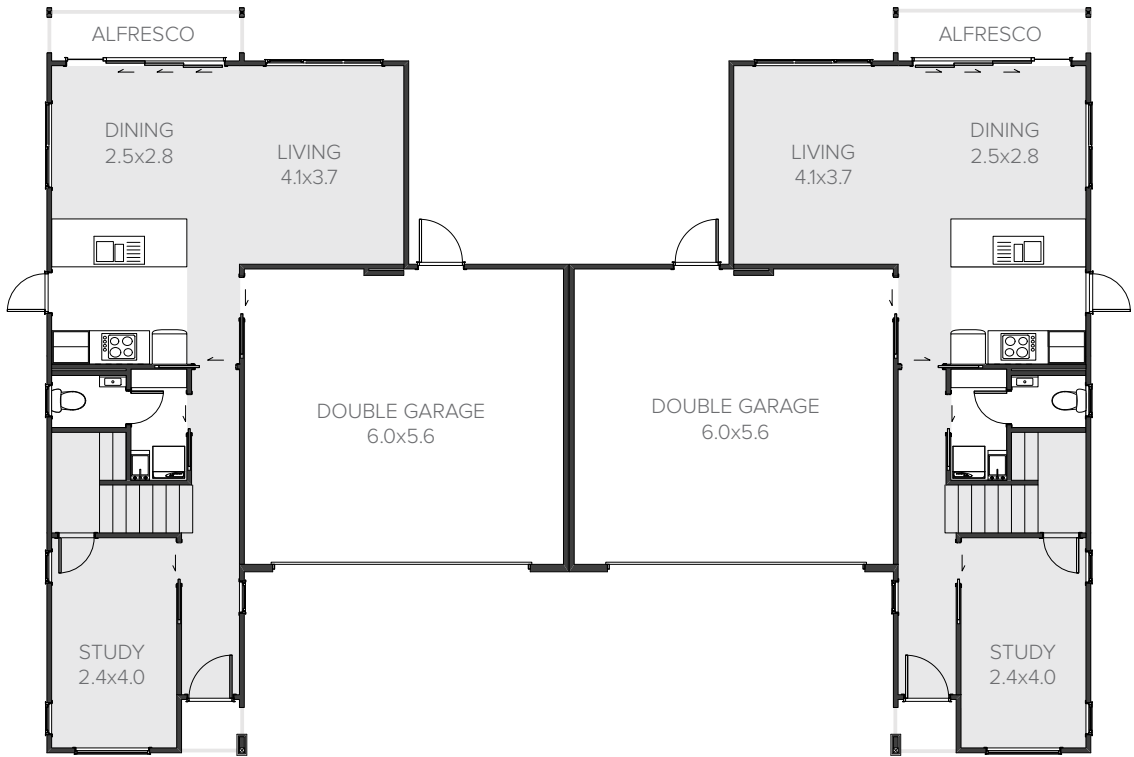
Double vision

Designed to accommodate everyone’s need for both privacy and family time. From a welcoming entranceway, it retains a practical feel with a study at the front of the home. The kitchen, living and dining areas are well integrated at the rear to capture light and create an easy indoor-outdoor feel.

FIRST FLOOR



GROUND FLOOR



Per Dwelling	
Living	132.33m ²
Garage	34.92m ²
Alfresco	7.30m ²
Total	174.55m²
Home Width	9.80m
Home Length	14.00m

175m² | 4 bdrm



Lockheed

Townhouse

4

1

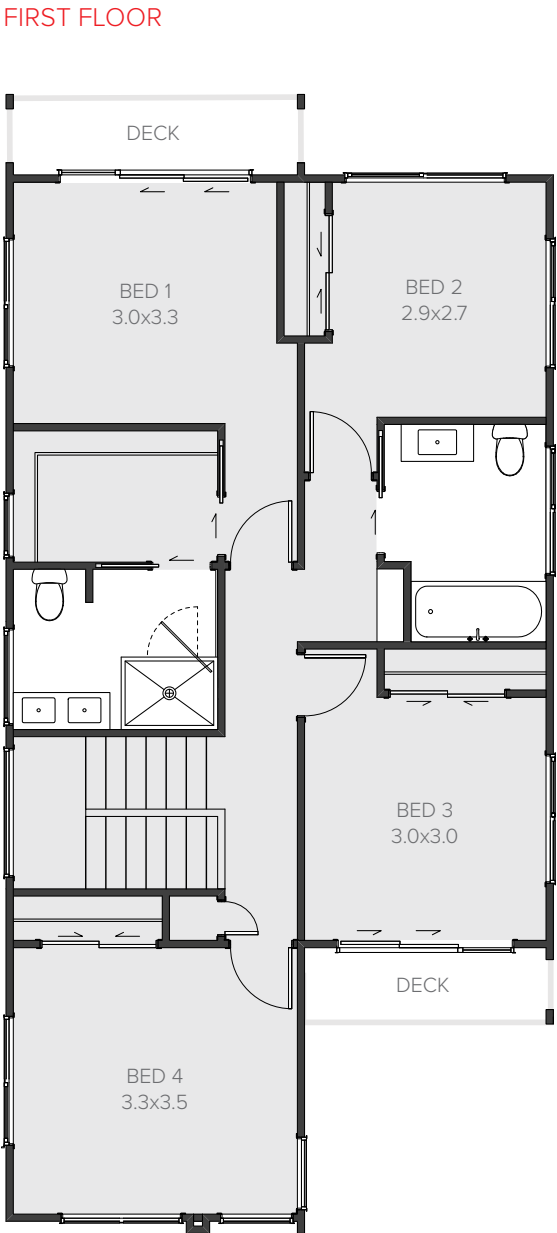
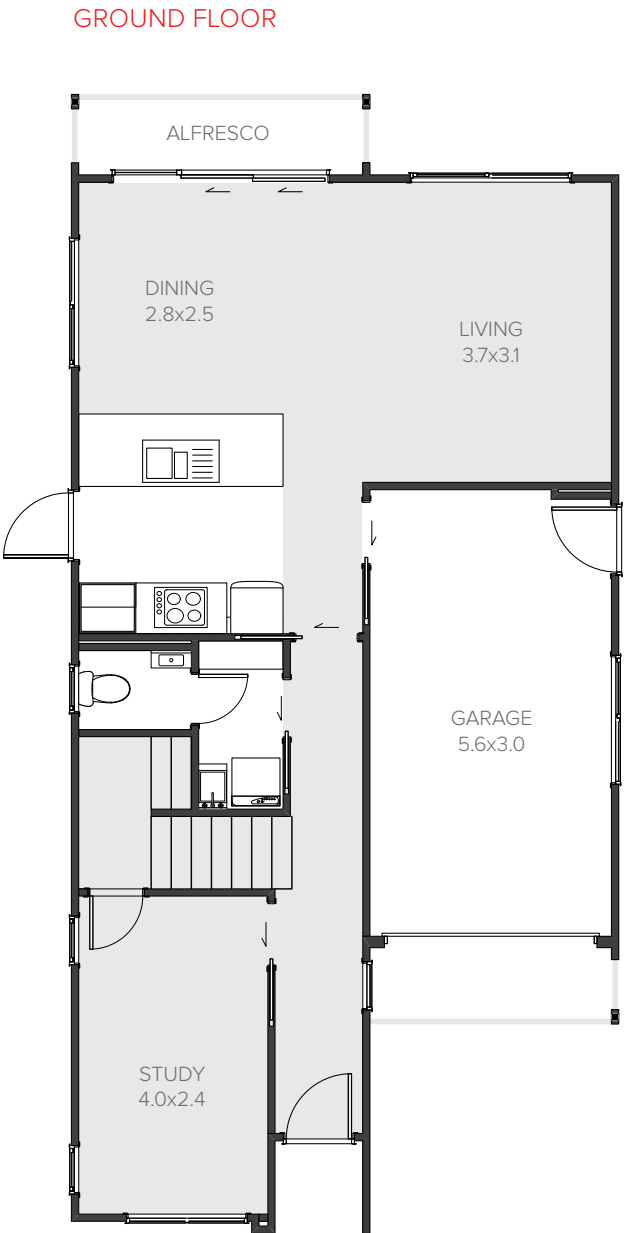
2

3

1

Street smart

Practical living with affordable luxuries, the Lockheed is a double storey, four-bedroom plus study, showpiece of intelligent home design. Migrate upstairs to the masterful retreat and find a haven for every member of the family. Suitable for narrow blocks, this home is just what you are looking for.



160m² | 4 bdrm

Living	132.63m ²
Garage	17.60m ²
Alfresco	10.30m ²
Total	160.53m ²
Home Width	6.80m
Home Length	14.15m



Lockheed

Terrace

 4	 1	 2	 3	 1
---	---	---	---	---

*Per Dwelling

Triple treat

These terraced homes offer functional family living and laid back relaxation. Soundproofing ensures the home is quiet and comfortable. Each dwelling offers four bedrooms, study, two bathrooms and open-plan living. Maximise the potential of your section today.

FIRST FLOOR



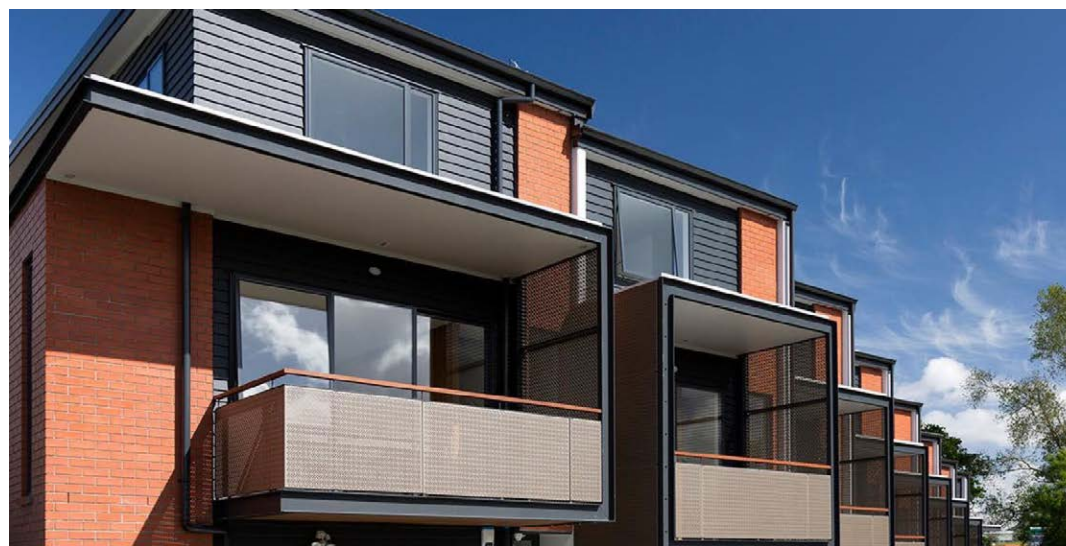
GROUND FLOOR



Per Dwelling

Living	132.63m ²
Garage	17.60m ²
Alfresco	10.30m ²
Total	160.53m²
Home Width	6.80m
Home Length	14.00m

160m² | 4 bdrm



DO YOU KNOW?

The industry standard for follow-up maintenance is just 12 months.

Jennian Franchisees exceed the industry standard and now offer a truly industry-leading 36 Month Defects Warranty* for your increased protection and peace of mind. That's a whopping 24 months longer than the current industry standard.

Even better, Jennian's 36 Month Defects Warranty is supported with a Home Owners Maintenance Schedule, providing you reminders of your requirements to complete maintenance checks with your home. This guide outlines maintenance practises to assist you to keep your home in top condition.

Our commitment to you does not end when we hand over the keys to your beautiful new home.

*For terms and conditions, please refer to the Jennian 36 Month Defects Warranty Policy

Jennian
HOMES

Your personality Our expertise





studio J

Studio J is our comprehensive state of the art home selection centre. View our extensive range of colour options, window treatments, flooring, bathroom fittings, doors, kitchen appliances, bench-tops and more. Our experienced New Home Consultants will guide you through the selection process.



New Home Builders' Info Session.

Building a new home is an exciting adventure and Jennian Homes has been building the homes New Zealanders want for more than 35 years.

Come and learn from the experts about the hidden costs of building and how to avoid surprises by designing a home, customised for you, to work within your true budget.

Our regular building information sessions arm you with lots of great information to help you on your journey to building your own home.

- Establishing your construction budget and how to avoid hidden costs.
- Exploring innovative, industry leading finance solutions.
- The impact of designing your home in an environmentally friendly way, to save you money.
- Planning the home you've always wanted.
- Residential construction industry knowledge and advice.

For more information on the New Home Builders' Information Session visit jennian.co.nz



Major Sponsor
Heart Foundation
Lottery



Heart
Foundation™

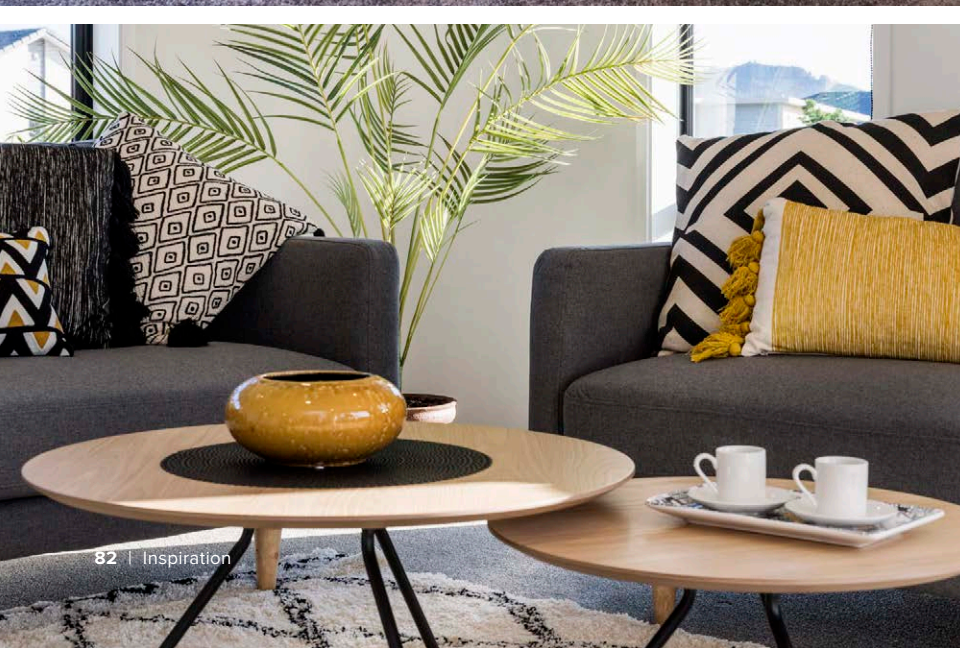
Celebrating 60 homes built together

Thank you to our major
Lottery sponsor

Jennian
HOMES

Feels like family™





Connect with us.



Online

Want to see more of Jennian?
Visit jennian.co.nz for all the
latest in home, interior design
and exclusive offers.



Display

We have Display Homes
located all over the country.
See the full list of locations
at jennian.co.nz



Social

Connect with us on Social
Media for all the latest news,
updates and offers.



As part of our
commitment to
caring for the
environment,
this catalogue
is printed using
soy ink on paper
from responsible
sources.

Your personality
our expertise.

Jennian
HOMES

Feels like family