

House of the Year
Most Awarded

Jennian
HOMES

Feels like family

New Zealand's
most



awarded builder.

Again and again
and again...

and again.

Jennian
HOMES
Feels like family™



The Registered Master Builders House of the Year Awards is a prestigious competition that celebrates building excellence in New Zealand. It awards the best homes and builders and the craftsmanship behind them.



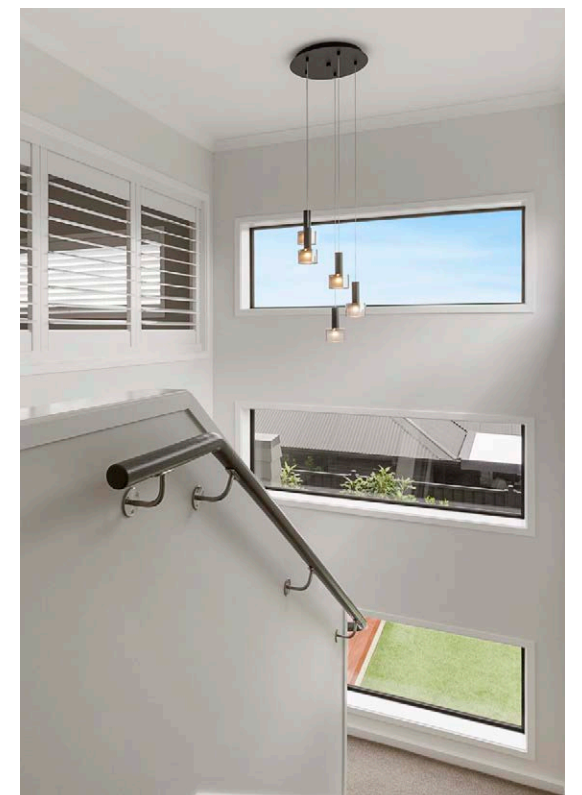
NEW AND NOTED

GIB Show Home

This elegant show home was carefully designed to create maximum impact on its corner site in a new community being built between Drury and Pukekohe. Clever design elements have been employed to ensure the four-bedroom executive family home is warm and welcoming. These include careful window placement to allow for maximum natural light, while still maintaining the residents' privacy.

The main living spaces are separate but have been carefully laid out to connect with the well-proportioned designer kitchen, which also has a high-quality scullery. The kitchen is the focal point for family living and the true heart of the 245sqm home. From the kitchen you can look out to the street and into the back yard – a bonus for parents of young children.

Three bedrooms share a chic family bathroom, and upstairs is the main bedroom – a sanctuary with an ensuite and walk-in wardrobe. This attractive, spacious house has specifically been designed as a true reflection of what clients receive when they build with Jennian Homes.





Auckland / Northland | Jennian Franklin

Jennian Homes - HOTY 2020

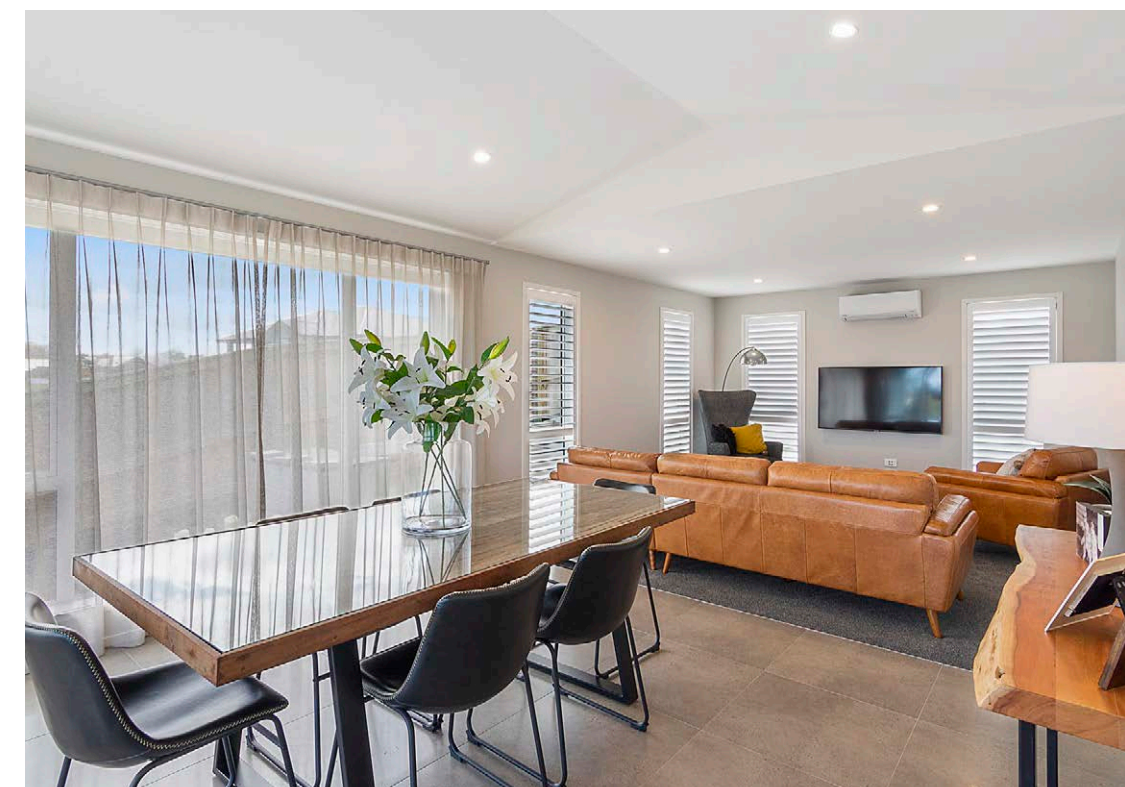
This hidden gem of a home set back from the road takes in wonderful rural views that include the Waiuku River. The 200sqm house faces north and west for the vistas, the warmth and the gorgeous west coast sunsets. It has two separate living areas: one combines the dining and family areas and the other, the kitchen and living spaces. It's clear this home has room for everyone.

You'll be able to cook up a storm in the stylish kitchen with river views and there is storage aplenty in the scullery. Entertaining is a possibility all year round thanks to a large covered patio. It connects to the dining area, which has scissor truss ceilings that lend a real air of grandness to the space. A Rinnai fireplace warms everyone on winter nights.

You'll find three spacious bedrooms, including the main suite that has a designer ensuite and a walk-through wardrobe. There's also a separate laundry and spacious garage with attic stairs for easy access to roof storage. The smart exterior is clad in James Hardie Oblique and Linea weatherboards and on the roof are Gerard pressed steel tiles – low-maintenance options that leave more time to enjoy the river views and the sunsets.

TAKE ME TO THE RIVER

Volume/Group Housing New Home
\$450,000 - \$750,000



Jennian Homes - HOTY 2020

BUILT TO LAST

Volume/Group Housing New Home
up to \$450,000



A sloping site may not offer an easy starting point from which to build, but this home proves it can result in an impressive design. The house was designed to make the most of the site's elevation, with some significant planning around groundworks to ensure the best use of the land. Its positioning also means that the best possible view from the living area has been achieved. With three bedrooms and two bathrooms, this urban oasis combines contemporary styling and superb street appeal.

A mixture of classic brick and weatherboard on the outside, it also offers stylish family living within. A bright, expansive kitchen island bench is a central area for the whole family to gather. One thing's for sure, this home is sunny both in colour and natural light. Stretch out in the light-filled lounge, or venture out to the patio. With the garden also just a step outside, there are plenty of spaces to sit back and relax. And the home's low-maintenance materials mean you can spend your weekends doing exactly that.

ON THE WATERFRONT

New Home \$600,000 - \$750,000

As far as holiday homes go, this Whitianga house ticks all the boxes – relaxed, right on the waterfront and a brilliant entertainer. The board-and-batten house adopts the ideal nautical look for such a prime spot on the canal. Set onto a 257sqm floor-plan, it has four bedrooms, three bathrooms and two living areas, meaning there's plenty of room for guests to come and stay a while. The large, open-plan kitchen/ dining/living pavilion forms the hub of the house.

The kitchen is built for entertaining. With white cabinetry, top-of-the-line stainless steel appliances and a waterfall island, there's plenty of resource and room for everyone to help prep for dinner. Just off the kitchen, large sliders open out onto an oversized deck on the canal, so when the meal is ready, it's an easy move to the outdoor entertainment area that is perfect for year-round gatherings. The main suite also looks out over the water. This house is the very definition of a spectacular coastal retreat.





Bay of Plenty / Central Plateau | Jennian Whakatane

The calming, beachy aesthetic of this three-bedroom home encourages casual, laid-back living. It starts with a welcoming entry that opens up to living areas with raked ceilings, a high stud and plenty of windows and doors that enhance the feeling of light and space.

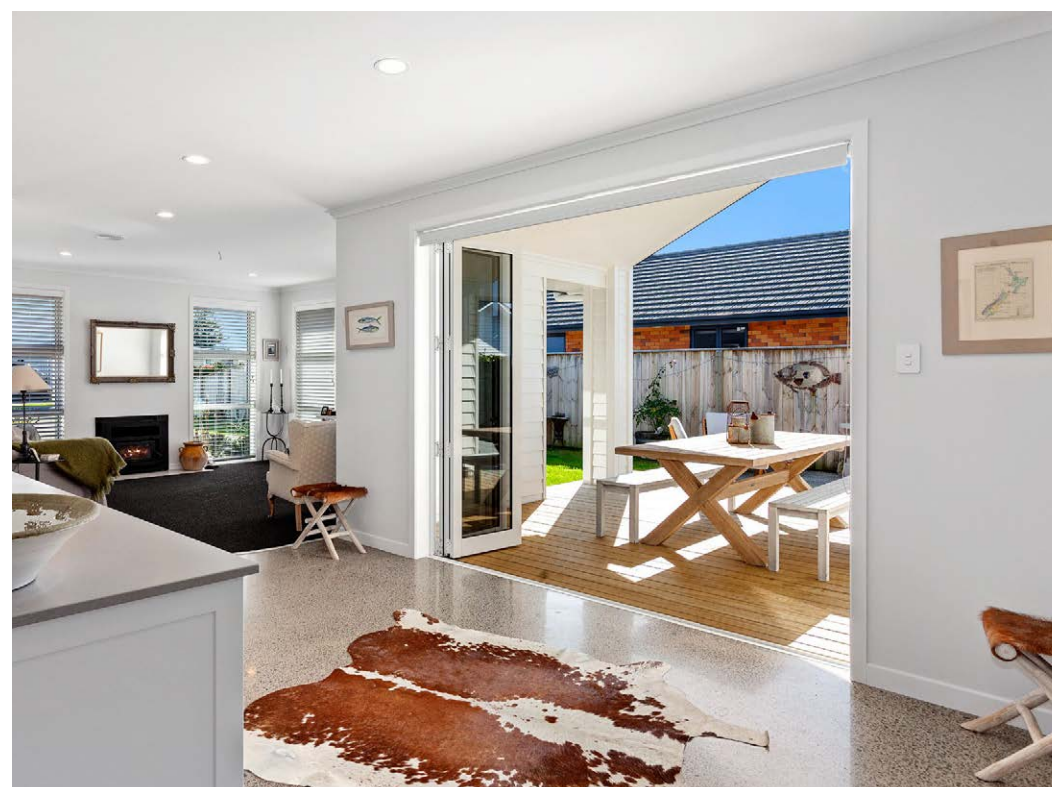
The open living areas lead to an alfresco space where you can sit and listen to the waves crashing on the nearby beach. A convenient office nook allows work to be done, if required, and in the winter months,

the wood fire keeps the open-plan areas cosy. This smart, practical three-bedroom home has as an internal-entry triple garage for all the toys needed for beach life, a separate laundry and polished concrete floors. The kitchen, which has a scullery, is full of character features such as a subway-tile splashback and glassfronted cupboards. The island, with its space for stools, doubles as a breakfast bar.

The main bedroom has a walk-in wardrobe and ensuite with under-tile heating, while a family bathroom sits between the other two bedrooms.

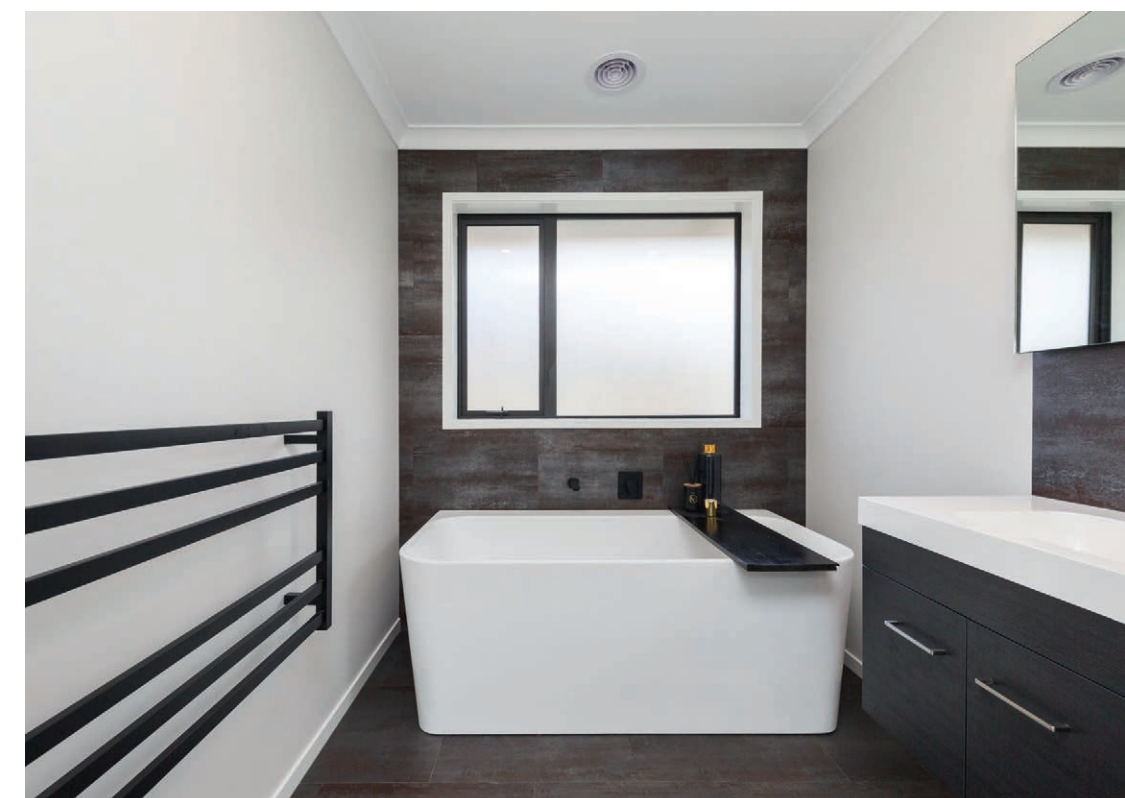
NEW WAVE

Volume/Group Housing New Home
\$450,000 - \$750,000



BRICK AND STYLE

Volume/Group Housing New Home
up to \$450,000



In a street full of 1970s-era brick houses, this new build blends in seamlessly. That's because the owners had it designed that way and chose classic brick with Linea weatherboards for the exterior and metal tiles for the roof. Inside, it's a different story. The house shines, due to its contemporary style, plus the quality of the construction.

The open-plan living area has a vaulted ceiling to add a sense of space and allow for a steady flow of natural light. A designer kitchen features modern, sleek lines and statement black tapware, and has a walk-in pantry. A second lounge ensures everyone has plenty of space in which to entertain and relax, while an office means that studying or working from home is never a problem.

A Brivis ducted gas central-heating system creates a cosy atmosphere throughout the 204sqm house and double-glazing helps retain the heat. There's also an internal-access insulated double garage.

Indoor-outdoor flow? In summer it's easy to throw open the large stacker doors in the living and lounge areas and step into the private backyard.

THE BEST OF BOTH

Volume/Group Housing New Home
up to \$450,000

A touch of country charm with comfortable modern details, this Masterton new build represents two styles that really make the heart sing. From its inviting entryway between two gabled peaks, a wide hall continues past all three bedrooms and two bathrooms, entering into a bright, open-plan living and kitchen area. Thermal-wrapped kitchen cabinetry brings its Shaker style into the kitchen, tying in with the home's tongue-and-groove panelling.

Beyond the living area, the 'whisky lounge' and office-come-art studio are fun creative spaces. French doors open from the bedrooms onto concrete pads – perfect for enjoying a coffee in the sunshine. Tongue-and-groove wall panelling and window blinds bring charm to the main bathroom. The Athena Cassini bath, tiled shower, unique vanity, ornate mirror and light fittings, and colonial-style tapware also make this space shine. Soothing, country-inspired wall colours allow the interior to feel homely. With its soft palette and modern fittings, this dwelling brings a traditional style into the present day.





Wellington / Wairarapa | Jennian Wairarapa

Modern living meets industrial style in this Wairarapa home. Add a measure of rustic flair, and you end up with this outstanding property. Cedar cladding on the interior makes a statement as you enter the 264sqm house. The rough-sawn timber is repeated in a feature wall in the living area and in the barn-style door of the media room.

The bedroom wing consists of four bedrooms and two bathrooms. The latter are in keeping with the modern-industrial theme throughout the home. Tiles on the walls, Athena Motio showers, Athena Sirocco vanities in black gloss and large, round mirrors do the trick.

In the kitchen you'll find an engineered stone benchtop, mirrored glass splashback and glossy cabinetry with high-tech hardware. A cathedral ceiling in the main living room and large sliding doors to the outdoor living area give a sense of grandeur and space. Once you're outside, the feeling is just as good. There's a seamless indoor-outdoor flow from the living area and views of the Tararua Range.

PLEASED TO MEET YOU

Volume/Group Housing New Home
\$450,000 - \$750,000



CHARACTER ROLE

Volume/Group Housing New Home
up to \$450,000



With street appeal and smart design, it's clear why the Asti house is a popular choice for Marlborough locals wanting new homes. James Hardie Linea Oblique weatherboard with boxed corners and window facings provide real character. It's a theme that's carried throughout the interior of the four-bedroom house. Repetitive, strategic use of HardieGroove in the kitchen, bathroom and raking ceiling in the living space are delivered with a modern, stylish twist and add to the charm.

Keeping the home comfortable is the Firth RibRaft HotEdge insulation, underfloor heating and a heat pump. In the kitchen a pressed-tin feature splashback is complemented by stainless steel appliances. A tray ceiling in the open-plan dining and family room delivers a sense of space. It's a feeling echoed in the separate living room with its raking ceiling. The 215sqm house – with well-appointed family bathroom, separate toilet and walk-through laundry – has been designed for ease of living and ensures no space is wasted. The drive-through double garage enables access to the rear of the section.



CREATURE COMFORTS

Volume/Group Housing New Home \$450,000 - \$750,000

Set on a rural block, this three-bedroom family home is situated to enjoy the sun and amazing views. The open-plan layout creates connected living areas, with a covered alfresco space accessible through large sliding doors. Positioned to look out over the rest of the dining/living space, the sleek kitchen features gas cooking and quality Fisher & Paykel appliances. The black island benchtop complements the home's hardware and lighting fixtures.

Spread over a single level, the dwelling has three bedrooms, with a tiled ensuite and walk-in-wardrobe in the main bedroom. An entry area, main bathroom, toilet, office space and separate laundry complete the floorplan. Panasonic ceiling and underfloor heating are an added bonus to this modern property. The exterior consists of Rockcote Graphex cladding with Linea features. This home is beautifully suited to its site and allows for a low-maintenance sanctuary all year round.





Nelson / Marlborough / West Coast | Jennian Nelson

Jennian Homes - HOTY 2020

From the street, this home's trio of gabled structures make a striking impression. When combined with the landscaping and a sweeping pathway to the front door, it all adds up to a stylish welcome.

Step inside the four-bedroom, two-bathroom home and the flair continues. A designer kitchen has a large walk-in scullery with soft-touch panels, timber features, a black Lazio sink and Fisher & Paykel appliances. LED lighting and a TriStone benchtop create an outstanding space for the chefs of the house.

The main bedroom ensuite has Lux Grigio tiles and underfloor heating. Throughout the rest of the house heating is taken care of with a ducted system and in one of two living areas, there's also a gas integrated fire. Quality laminate timber and Siren Dio carpets cover the floors and automated roller binds throughout the house keep the warmth in during winter and the summer sun at bay. This house is designed for family living inside and out – there are two kwila decks for dining and entertaining. Architectural exterior features include wrapped plaster barges and entry ceilings.

FLAIR ENOUGH

GIB Show Home



Jennian Homes - HOTY 2020

SUNNY OUTLOOK

Volume/Group Housing New Home
up to \$450,000



Built on a hillside subdivision, this home boasts great indoor-outdoor flow. Designed to capture the sun, the home has outside spaces that connect with the sitting room, living area and main bedroom. Open and easy to access, the modern kitchen with walk-in pantry is the perfect space in which to congregate with friends and family.

The high ceilings in this lounge/kitchen/dining space add to the home's sense of spaciousness. The rest of the dwelling comprises of a laundry, main bathroom and three well-appointed bedrooms. The footprint is designed to have two separate areas, with the main bedroom wing positioned to maintain privacy from the other bedrooms.

Quality fixtures and flooring throughout complete this home's interior. A delightful compact garden and exterior cladding of Rockcote and Linea make for a home with attractive street appeal. It's easy to feel at home in this low-maintenance space.



GOOD LIVING

New Home up to \$450,000

Rolleston is a master-planned community where people can live, work and play, all of which are significant drawcards. As a result, it is in demand for those seeking a lifestyle change – one that provides value for money and proximity to amenities. This beautifully built Jennian home reflects the good things in life that Rolleston has come to represent. Relaxed family living is comfortably accommodated within 182.5sqm. Three bedrooms, two bathrooms, two living rooms, decking and an outdoor room serve family and friends.

The front door opens to a well-appointed kitchen with crisp and contemporary styling. A butler's pantry makes catering and coffee making that much easier. The internally accessed garage is great in inclement weather, and also takes care of storage for sports gear. From the street, brick is paired with black soffits and roofing for smart presentation. The manicured lawn is open to the street and a great place for the kids to throw a ball. Jennian Homes has covered off everything in this home, including quality insulation for warm winters.





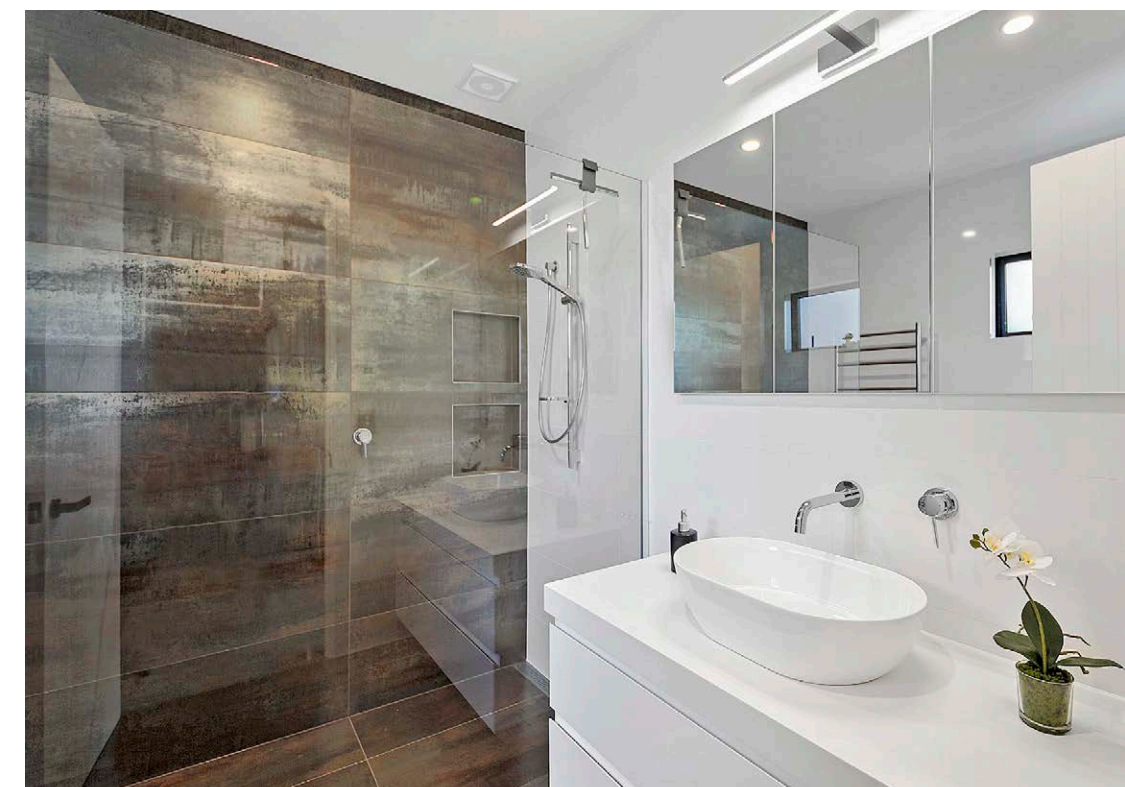
Canterbury | Jennian Canterbury

With uncompromised quality and outstanding design, this new build leaves no detail overlooked. Expertly arranged for socialising and relaxation, the living area features a pitched ceiling for a wonderful sense of space, and sliding doors seamlessly open out onto a deck area. Complete with a luxurious spa pool and plant boxes, this space steps down onto a flat lawn – the place to be on warm, sunny days.

Concrete floors run throughout the living area and kitchen, and are offset by the white cabinetry. A mirrored splashback opens the space up, as does the wide window above the sink that presents the kitchen with a gorgeous green vista out across the surrounding area. Private from the main living area in a separate wing and connected by the entrance way, two bedrooms and two bathrooms make for harmonious living. The main bedroom opens out onto the deck. Exceptionally finished, this home is designed for easy living indoors and out. Its balance of convenience and style ensures it is a truly relaxed retreat.

BESPOKE BEAUTY

New Home \$450,000 - \$600,000



WALK RIGHT IN

Volume/Group Housing New Home
up to \$450,000



This modern, four-bedroom family home has been carefully designed for easy living and maximum use of outdoor space to accommodate a growing family. Those who love to cook will adore the well-considered kitchen, with a mixture of smooth surfaces and thoughtful extras. Light and bright, it features a textured splashback, TriStone benchtops and a scullery for optimum storage and tucking away any cooking clutter.

As well as the open-plan kitchen, living and dining area, there is a separate family room, so everyone in the home has space to relax and family movie nights are a given. Through sliding doors, the living area flows seamlessly outside to the private, fully fenced backyard, where you'll find entertaining areas and space for the kids to play.

The main bedroom comes with a walk-in wardrobe and tiled ensuite. Three additional bedrooms and another bathroom mean there's privacy for everyone. Three Fujitsu heatpumps keeps the 200sqm house toasty in winter and cool in the summer heat. Comfortable and stylish, this is an easy-care home families can walk straight into and make their own.

STYLE AND SIMPLICITY

New Home up to \$450,000

Brand new, low maintenance and with a delightfully sunny aspect, this 219sqm four-bedroom residence is modern and has slick street appeal. A stylish palette of black, white and grey unites the interior, which has at its heart a spacious open-plan living, kitchen and dining hub. Entertaining is easy thanks to the carefully designed kitchen, with high-spec appliances, handy butler's pantry and luxe TriStone benchtop, offering ample space for Sunday brunch.

Four comfortable bedrooms, two bathrooms and two living areas mean space is never an issue. The main bedroom is an oasis with chic ensuite and substantial walk-in wardrobe. Additional features that demonstrate the level of care and planning that has gone into the house include Legrand light fittings and switches, an Athena Contro bath, plush Norman Ellison carpeting and a Fujitsu heatpump that will keep the home cosy and comfortable all year round. A generous double garage, great use of outdoor spaces and significant landscaping in the works are the icing on the cake.





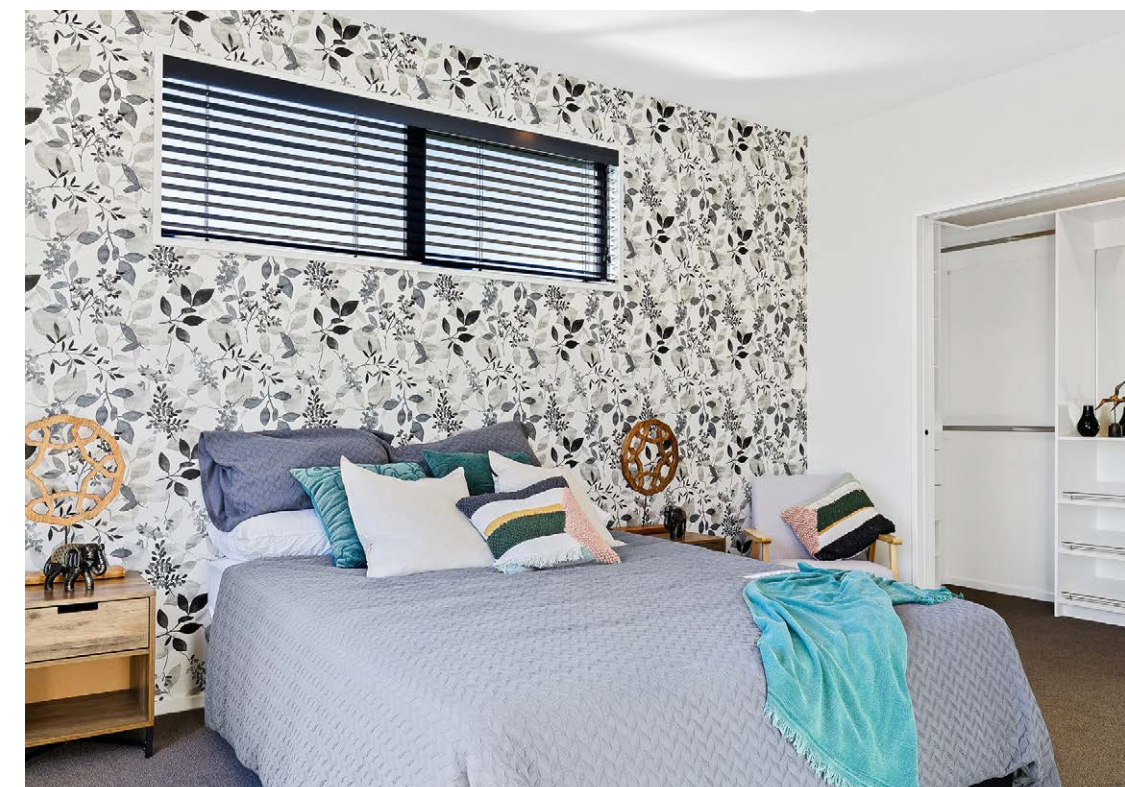
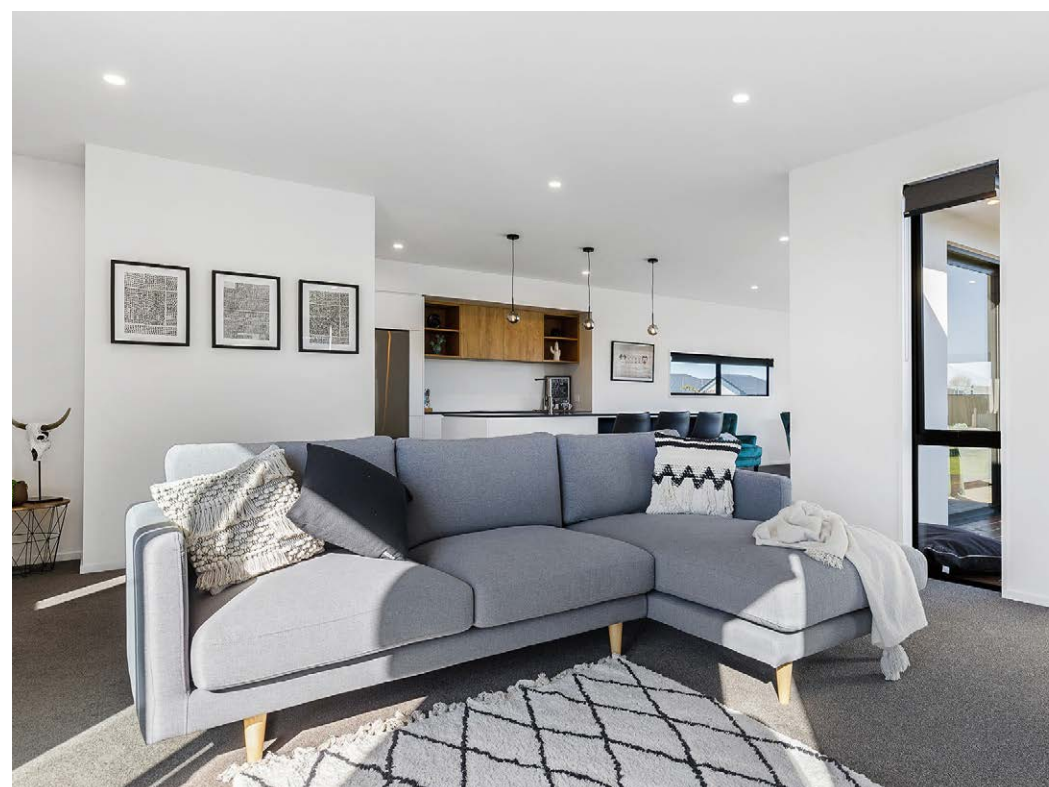
Mid & South Canterbury | Jennian Canterbury

This lovely home has a well-considered floorplan that brings together three bedrooms and two superb living spaces that flow effortlessly to the outdoor area. The gabled exterior has a hint of country life, and paired with oblique weatherboard and Resene Rockcote, it gives a great first impression. The well-appointed kitchen is sleek and modern, with elegant lighting, TriStone benchtops, a walk-in pantry and room for friends to join you at the island bench.

The main bedroom boasts a feature wall, a walk-in wardrobe and luxurious ensuite. The main bathroom is also a delight with its Athena Contro bathtub and separate shower, and thanks to stylish storage, there's a place for everything. Neat, tidy and low maintenance with good space throughout, this home is perfectly positioned for maximum sun and outdoor living. Everything has been considered, including the home's Panasonic heatpump that will keep the family comfortable year-round. All you need to do is sit back and relax.

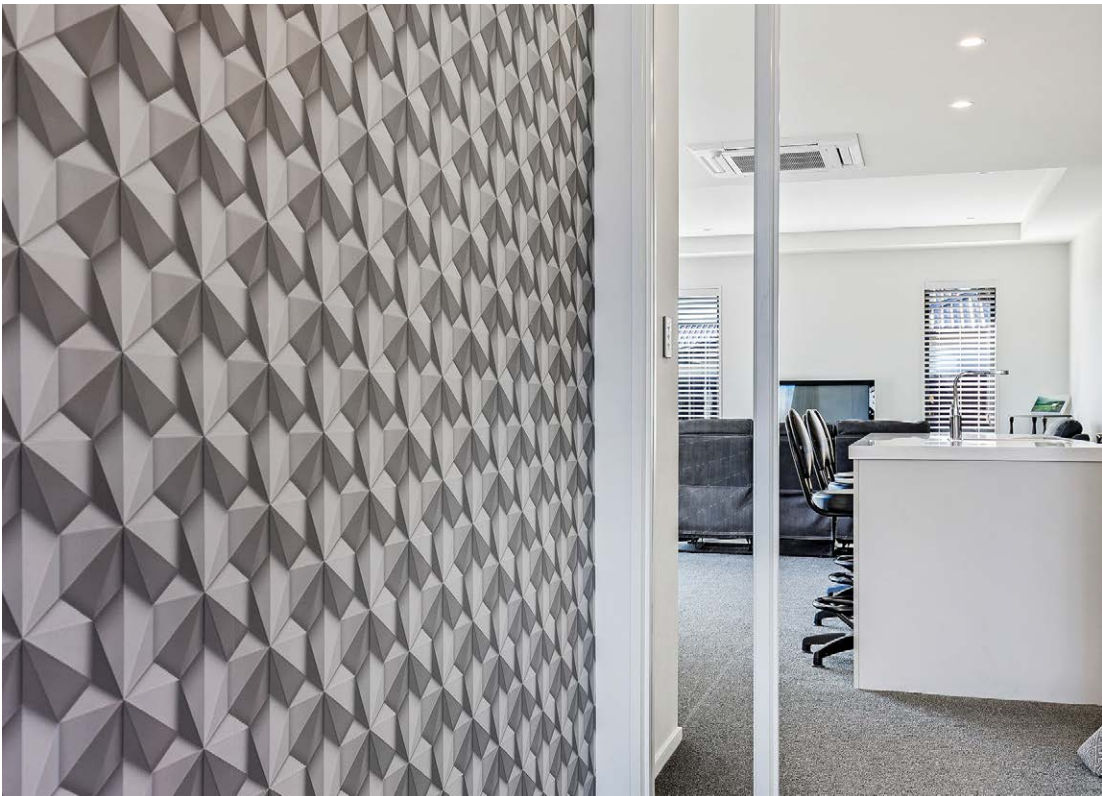
A PLACE OF YOUR OWN

GIB Show Home



FEELS LIKE HOME

New Home up to \$450,000



This contemporary family home sits on a quiet and sunny section. Designed to allow for the changing needs of the homeowners who moved from the country to an urban setting, the 223sqm floorpan includes three bedrooms, two bathrooms, and plenty of living space both inside and out. Brick and Linea weatherboard combine on the home's exterior, and beautiful landscaping makes for excellent street appeal.

Inside, there has been a real focus on feature walls and unique lighting, especially in the hallway. Even in the kitchen, the creative splashback offers a rural, mountainous scene – the view the owners previously enjoyed from their country home. With a large TriStone island bench, this is the place to socialise. The kitchen also features Fisher & Paykel appliances, sleek cabinetry and a roomy butler's pantry.

The main bedroom has a walk-in-wardrobe, an ensuite, and private access to the lawn. All of which makes for a seamless city transition.

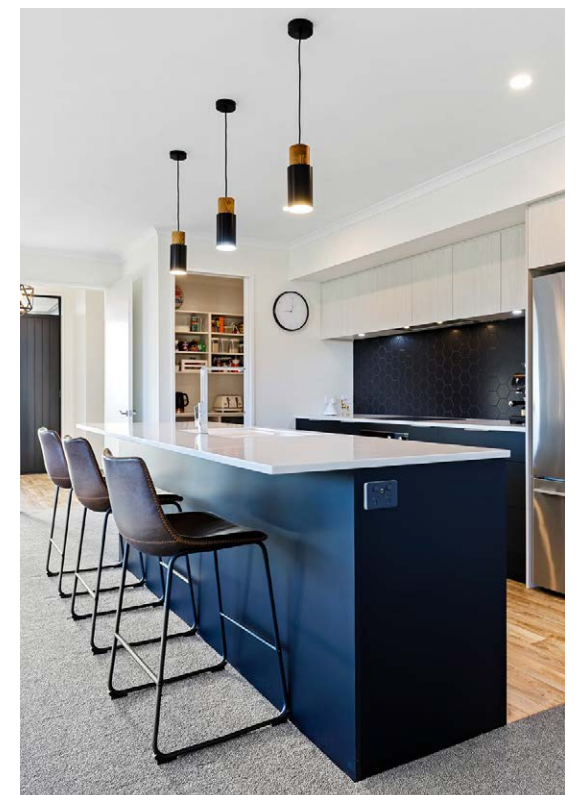
TAILORED TO FIT

Volume/Group Housing New Home up to \$450,000

Whether it's for executive or family living, this beautiful 223sqm home ticks all the right boxes. A tidy, tasteful entrance clad in dark Linea weatherboard contrasts with white Devonstone brick, giving the house stunning street appeal. Thoughtful planting and large windows draw you inside where there is plenty of natural light and room to move.

Entertaining is made easy in the open-plan living area, which flows out onto the deck area through glass sliders. Designed with family living in mind, the kitchen's island bench is the ideal place to gather in the morning, and the cook of the home will love the walk-in pantry and Fisher & Paykel appliances. A feature tiled splashback ties in with the dark blue cabinetry and pendant lighting, and complements the dwelling's modern colour palette.

The rest of the floorplan includes four bedrooms, two bathrooms and two living areas that provide a retreat from the hub of the home. The doors of the media room can be closed for privacy, perfect for family movie nights. With a sleek aesthetic and quality finishes, this is the definition of modern living.





Southern | Jennian Otago

This sunny Mosgiel home has been cleverly designed for maximum family enjoyment. The Resene Construction Systems 60mm Graphex exterior cladding includes an appealing negative detail feature. Low-E Max double-glazed windows and Dimond corrugate roofing complete the exterior. An internal wall in the entry features a clay plaster with pāua shell finish.

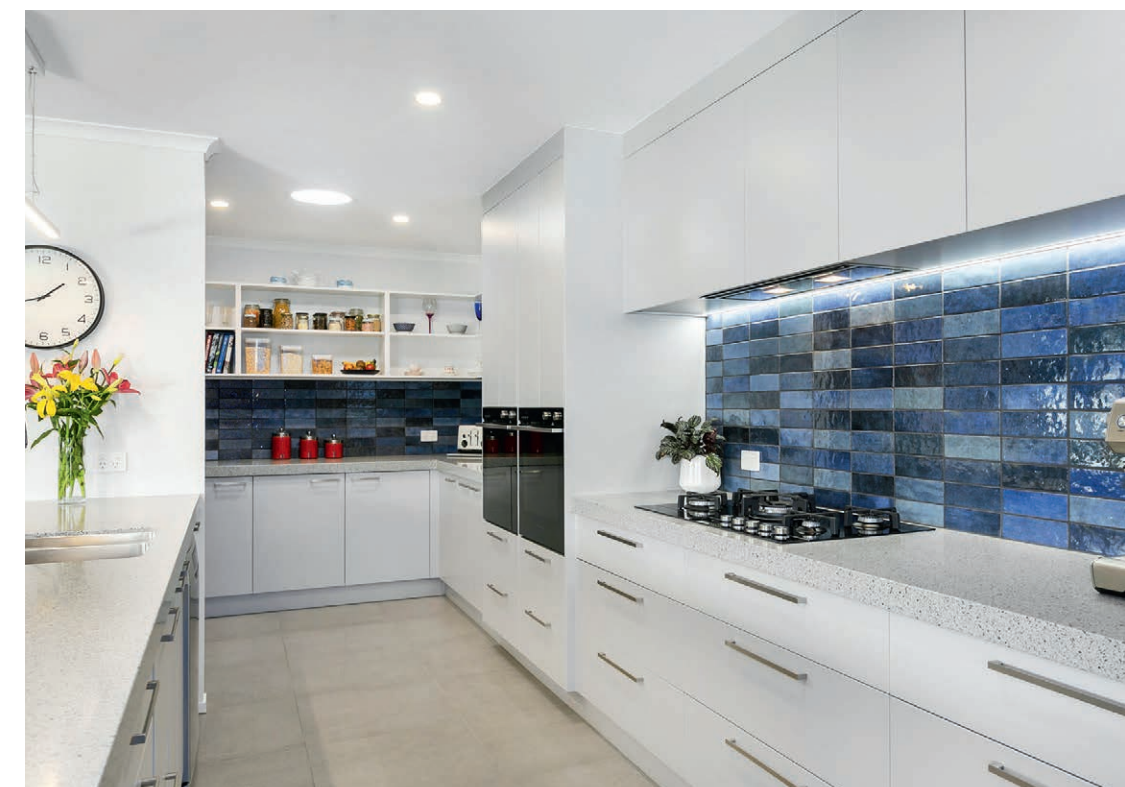
At the heart of this family home is a wonderful open-plan kitchen and scullery featuring TriStone bench tops and a tiled splashback, the lack of dividing walls creating flow. This looks out to the dining and living rooms, where ranch slider doors lead to a covered alfresco area. A separate lounge leads from the open-plan design through a feature timber barn door, providing flexible use of the living spaces. A matching feature door separates the entry from the living room, providing the handy option of being able to close off the entry as required.

This lovely home includes four spacious bedrooms – the main bedroom with its own generous walk-in robe, fully tiled walk-in shower and vanity with double basins.

Jennian Homes - HOTY 2020

CROWD PLEASER

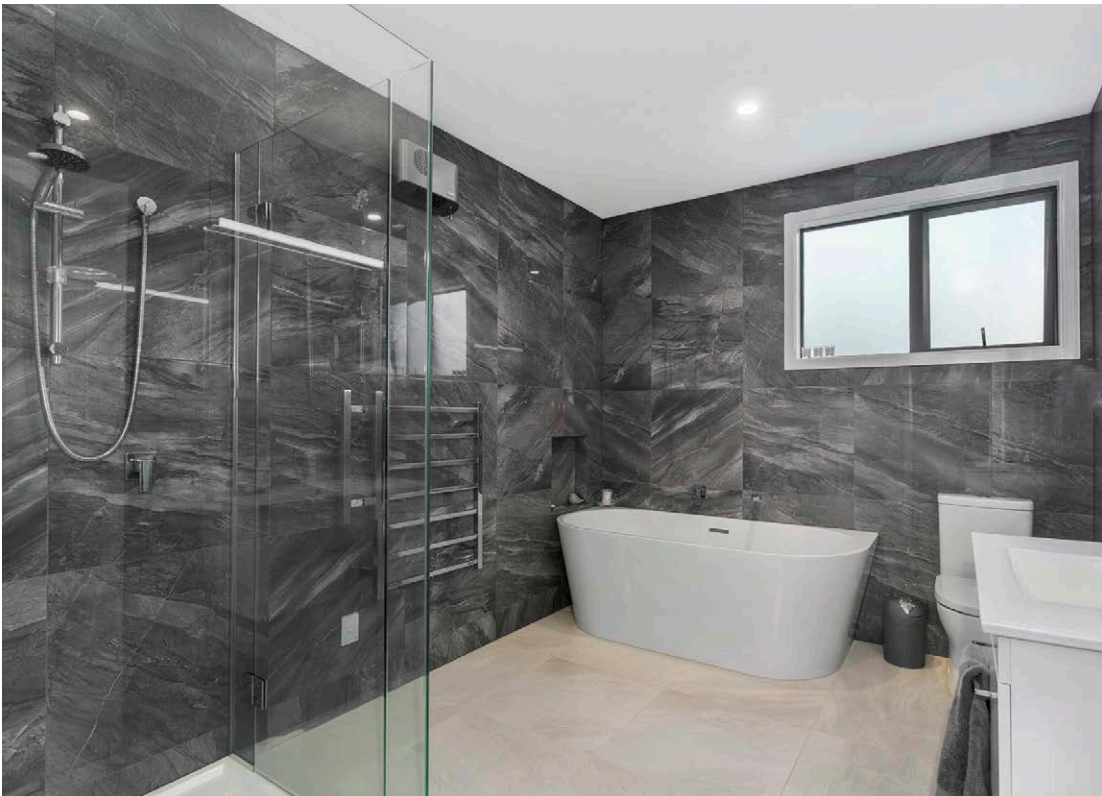
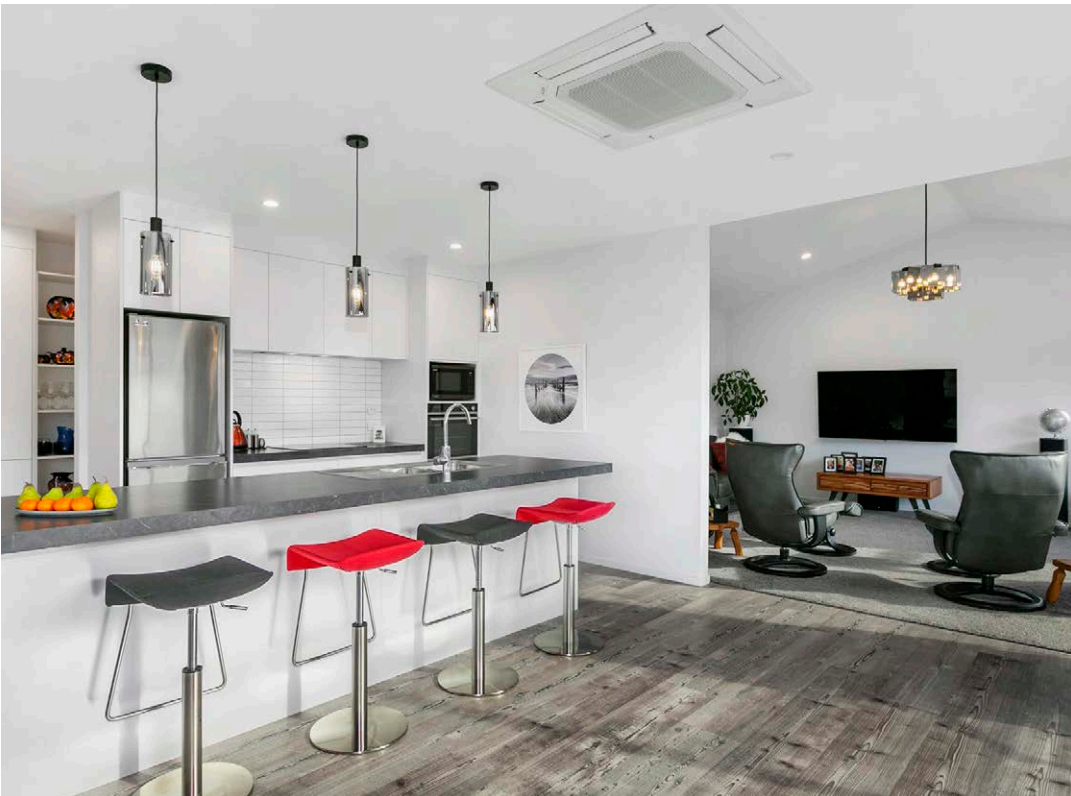
Volume/Group Housing New Home
\$450,000 - \$750,000



Jennian Homes - HOTY 2020

COME DINE WITH ME

Volume/Group Housing New Home
\$450,000 - \$750,000



This immaculately presented home in a crisp, modern finish is designed to make life easy and comfortable. The brief for this new build was for great street appeal, future-proofing and an entertainer's paradise.

The distinctive frontage uses vertical cedar shiplap weatherboard, 50mm Resene Construction Systems Graphex Facade System and Colorsteel roofing. Vast picture windows allow it to blend with its surroundings. The north-facing aspect provides all-day sun and high scissor trusses in the living areas complement the open-plan layout.

The designer kitchen and pantry are the hub of this home and create a light, spacious setting, meeting the owner's brief. Team this with three generously sized bedrooms. The main provides a private retreat, with a walk-in robe and an under-floor heated tiled ensuite. A separate bathroom, office, laundry, storeroom and storage access in the garage ceiling complete this spacious home. High-quality, stylish fittings and furnishings can be found throughout and all on a newly developed, easy-care section.

WELCOME HOME

GIB Show Home

With its welcoming alfresco area, foodie-friendly kitchen and light-filled scullery, this 211sqm Queenstown show home was built with entertaining in mind.

The kitchen is a study in contemporary cool with its sweeping central island and skylights, offering a lovely work space where the chef can prepare meals while socialising with guests in the dining and living areas. The home's airy interior is configured to welcome in all-day sun, while oversized bifold doors flow out to a large louvre-covered deck for soaking in the serenity.

On cooler summer nights an outdoor fireplace adds warmth and ambience, and during the winter months a fireplace beckons in the cosy second lounge. There's also underfloor heating providing extra comfort throughout. A tiled ensuite and a walk-in wardrobe make the main bedroom a retreat, while two additional bedrooms and a bathroom are comfortably configured for everyday life as well as visitors. With a layout designed with family top of mind, this modern home set against the backdrop of mountains is an easy mix of the practical and the stylish.





JENNIAN HOMES FAR NORTH
P 07 578 2301
E farnorth@jennian.co.nz

JENNIAN HOMES NORTHLAND
P 09 459 5408
E northland@jennian.co.nz

JENNIAN HOMES NORTH WEST
P 09 283 0059
E northwest@jennian.co.nz

JENNIAN HOMES CBD & EAST AUCKLAND
P 09 918 9078
E cbd.east@jennian.co.nz

JENNIAN HOMES COMMERCIAL AUCKLAND
P 09 475 0119
E commercial@jennian.co.nz

JENNIAN HOMES RODNEY
P 09 948 6888
E rodney@jennian.co.nz

JENNIAN HOMES FRANKLIN
P 09 238 6156
E franklin@jennian.co.nz

JENNIAN HOMES COROMANDEL
P 07 865 6767
E coromandel@jennian.co.nz

JENNIAN HOMES HAMILTON
P 07 949 7770
E hamilton@jennian.co.nz

JENNIAN HOMES CAMBRIDGE
P 07 949 7770
E cambridge@jennian.co.nz

JENNIAN HOMES TAURANGA & WESTERN BOP
P 07 925 9800
E tauranga@jennian.co.nz

JENNIAN HOMES WHAKATANE
P 07 307 8352
E whakatane@jennian.co.nz

JENNIAN HOMES TAUPO
P 021 302 303
E taupo@jennian.co.nz

JENNIAN HOMES HAWKES BAY
P 027 244 4995
E hawkesbay@jennian.co.nz

JENNIAN HOMES MANAWATU
P 06 355 3325
E manawatu@jennian.co.nz

JENNIAN HOMES WAIRARAPA
P 06 370 0777
E wairarapa@jennian.co.nz

JENNIAN HOMES WELLINGTON
P 04 586 9525
E wellington@jennian.co.nz

JENNIAN HOMES NELSON BAYS
P 03 544 4390
E nelson@jennian.co.nz

JENNIAN HOMES MARLBOROUGH
P 03 578 2017
E marlborough@jennian.co.nz

JENNIAN HOMES WEST COAST
P 03 789 5050
E westcoast@jennian.co.nz

JENNIAN HOMES CANTERBURY
P 03 741 1436
E canterbury@jennian.co.nz

JENNIAN HOMES MID & SOUTH CANTERBURY
P 03 741 1436
E midcanterbury@jennian.co.nz

JENNIAN HOMES OTAGO
P 03 477 6912
E dunedin@jennian.co.nz

JENNIAN HOMES CENTRAL OTAGO
P 021 242 2120
E central.otago@jennian.co.nz

JENNIAN HOMES WANAKA
P 021 632 244
E wanaka@jennian.co.nz

JENNIAN HOMES SOUTHLAND
P 03 422 1287
E southland@jennian.co.nz



Jennian
HOMES