






# House and Land Package

POA

**Jennian**  
HOMES



## 39 Rawiri Street, Lockerbie Estate, Morrinsville

 3	 2	 2	 2	 1
---	---	---	---	---

This three-bedroom house and land package in stage 2 of Lockerbie Estate, Morrinsville is modern and stylish. The plan has been thoughtfully designed with an open-plan living area that creates an ideal flow for the perfect new home. Offering a super-smart layout and floor plan, this fantastic house and land package represents quality. The spacious living area opens onto a patio, creating seamless indoor-outdoor flow. The chic and modern kitchen offers both elegance and functionality. The master bedroom includes an en-suite and a good-sized wardrobe. You'll also enjoy the convenience of a two-car garage.

### Waikato

Studio J, 502 Grey Street, Hamilton 3216

P 07 949 7770

E [Waikato@jennian.co.nz](mailto:Waikato@jennian.co.nz)

[jennian.co.nz](http://jennian.co.nz)

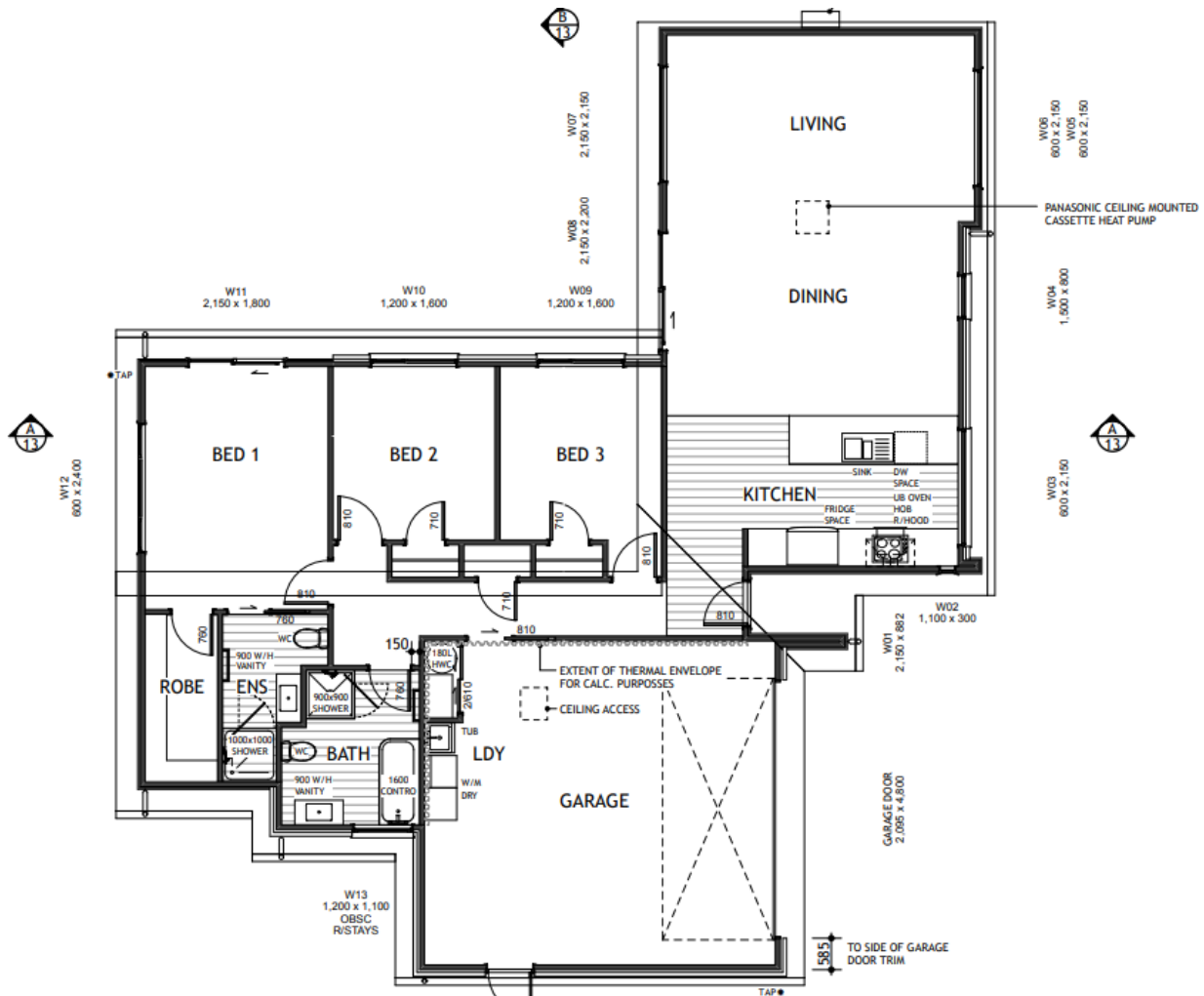
### Kim Samphier

P 021 195 4525

E [kim.samphier@jennian.co.nz](mailto:kim.samphier@jennian.co.nz)

# 39 Rawiri Street, Lockerbie Estate, Morrinsville

171.00m<sup>2</sup> | 3 bdrn



Living Area	129 m <sup>2</sup>
Garage Area	42 m <sup>2</sup>
<b>Total Floor Area</b>	<b>171 m<sup>2</sup></b>
Home Width	15 m
Home Length	17 m
Land Area	554 m <sup>2</sup>

The images may show features which may not be included in the standard plan or price. Your local Jennian New Home Consultant will confirm standard features and discuss your ideas. All plans remain the copyright of Jennian Homes.