

House and Land Package

FROM \$1,320,000

Jennian
HOMES



Lot 7 5 Smithson Street, Milldale

 4	 2	 2	 2	 1
---	---	---	---	---

This beautiful family home will boast a modern design and a prime location, offering a living experience that combines convenience, comfort, and style.

With four spacious bedrooms, two well-appointed bathrooms, and versatile living rooms, it provides ample space for both privacy and socializing. The floor area of 169 sqm (more or less) allows plenty of room to move around, while the 419 sqm section provides a generous outdoor space for family activities and entertaining.

Auckland - North and West

Unit GE, 43 Omega Street, Rosedale, Auckland 0632

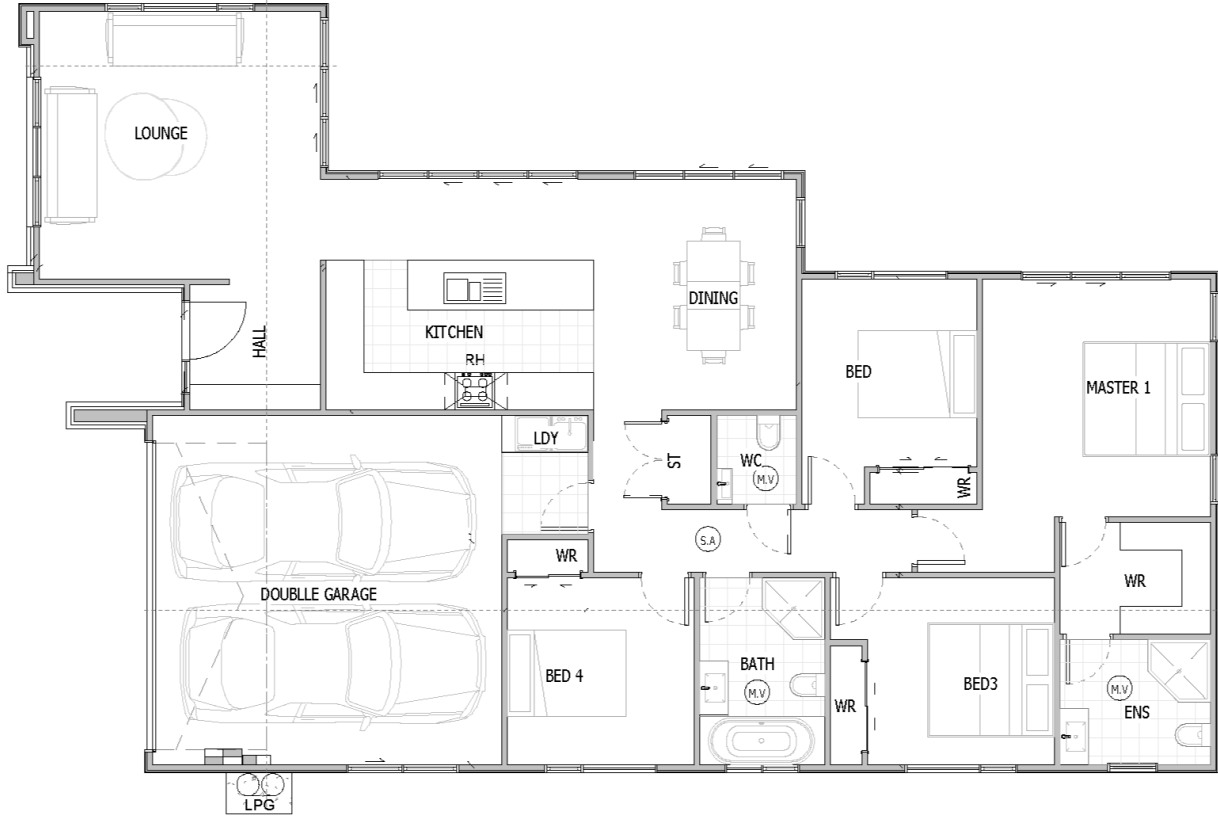
P 09 283 0063

E northwest@jennian.co.nz

jennian.co.nz

Lot 7 5 Smithson Street, Milldale

169.00m² | 4 bdrm



Living Area	169 m ²
Home Width	12.26 m
Home Length	19.25 m
Land Area	419 m ²

The images may show features which may not be included in the standard plan or price. Your local Jennian New Home Consultant will confirm standard features and discuss your ideas. All plans remain the copyright of Jennian Homes.