




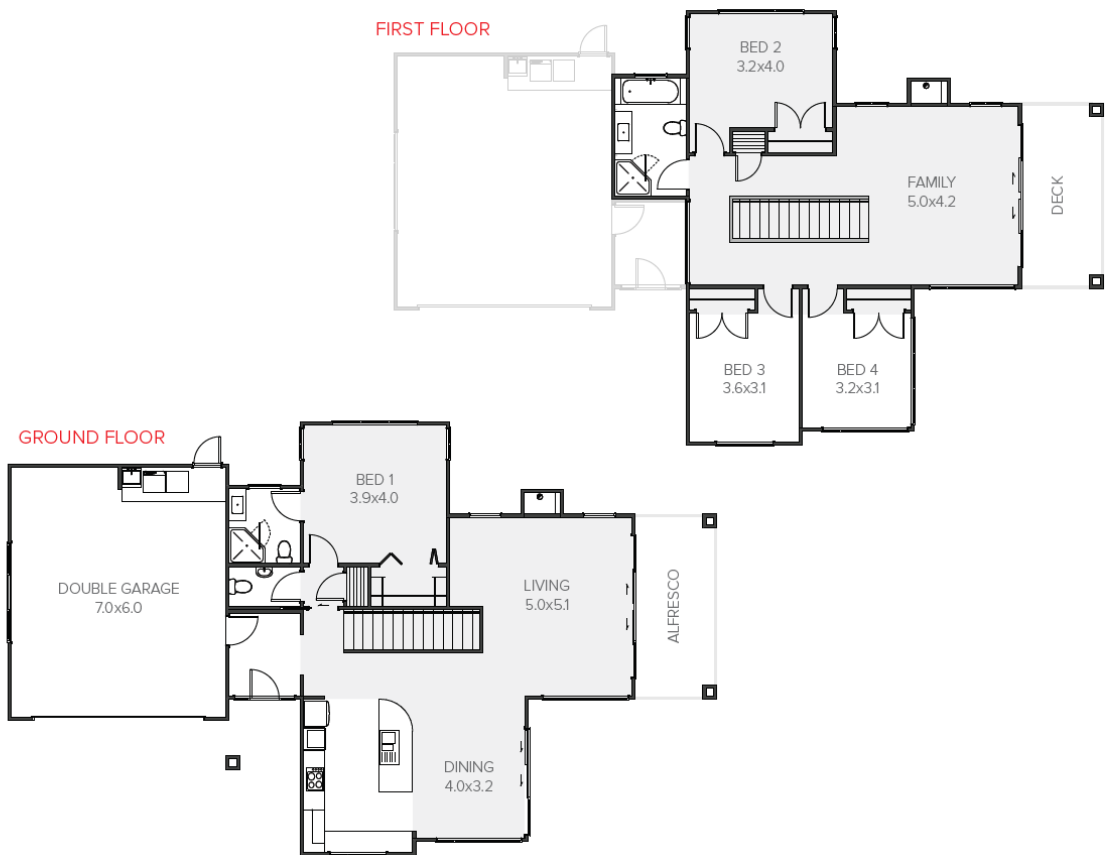




## Uptown

Uptown and upbeat – this two-storey mono-pitch weatherboard home with feature cladding to columns is pure wow factor. Extensive use of full height glazing floods interior space with light, and creates a jewel box effect at night.

 4	 2	 2	 3	 2
---	---	---	---	---



Living Area	213.64 m <sup>2</sup>
Garage Area	44.1 m <sup>2</sup>
Total Floor Area	257.74 m <sup>2</sup>
Home Width	12.19 m
Home Length	19.9 m

The images may show features which may not be included in the standard plan or price. Your local Jennian New Home Consultant will confirm standard features and discuss your ideas. All plans remain the copyright of Jennian Homes.